

# WAVLINK



see the world

**USB-C 10G 8K@30Hz Mini Hub**

**Model: WL-UHP3420**

**@WavlinkOfficial**

**@WavlinkTechSupport**

# Table of contents:

- About This Guide
  - Conventions
  - More Info
  - Speed/Coverage Disclaimer
  - Safety Instructions
  - Copyright Statement
  - WEEE Directive & Product Disposal
- Chapter 1 Basic Information
  - In the Box
  - System Requirements
  - Overview
- Chapter 2 SSD Assembly and Connection
  - SSD Assembly and Connection
- Chapter 3 Partition and Format Installation
  - Partition and Format Installation
    - For Windows
    - For Mac
- Chapter 4 After-Sales Service
  - After-Sales Service

# About This Guide

This guide is a complement to Quick Installation Guide. The Quick Installation Guide provides instructions for quick internet setup, while this guide contains details of each function and demonstrates how to configure them.

When using this guide, please notice that features of the router may vary slightly depending on the model and software version you have, and on your location, language, and internet service provider. All screenshots, images, parameters and descriptions documented in this guide are used for demonstration only.

## Conventions

In this guide the following conventions are used :

Convention	Description
<u>Underlined</u>	Underlined words or phrases are hyperlinks. You can click to redirect to a website or a specific section.
<b>Teal</b>	The content and text that needs to be emphasized on the web page is the theme color <b>#1D428A</b> , including menus, items, buttons, etc.
<b>&gt;</b>	The menu structures to show the path to load the corresponding page. For example, <b>More &gt; Network &gt; Mode Selection</b> means the Mode Selection function page is under the Network menu that is located in the More tab.
Note:	Do not ignore this type of comment, it is to remind you to better use the device, to avoid the operation of the error that will cause the function to be invalid.
Tips:	Indicates important information that helps you make better use of your device.

## More Info

The latest software, management app and utility are available from the Download Center at <https://docs.wavlink.xyz/Firmware/> .

A quick installation guide can be found in this guide.

Specifications can be found on the product page at <https://docs.wavlink.xyz/>.

If you encounter any issues, please don't hesitate to email [contact@wavlink.com](mailto:contact@wavlink.com) to provide feedbacks or contact online customer service, thank you !

## Speed/Coverage Disclaimer

\*Maximum wireless signal rates are the physical rates derived from IEEE Standard 802.11 specifications. Actual wireless data throughput and wireless coverage are not guaranteed and will vary as a result of 1) environmental factors, including building materials, physical objects, and obstacles, 2) network conditions, including local interference, volume and density of traffic, product location, network complexity, and network overhead, and 3) client limitations, including rated performance, location, connection, quality, and client condition.

Information in this document is subject to change without notice. The manufacturer does not make any representations or warranties (implied or otherwise) regarding the accuracy and completeness of this document and shall in no event be liable for any loss of profit or any commercial damage, including but not limited to special, incidental, consequential, or other damage.

## Safety Instructions

Always read the safety instructions carefully.

Keep this Quick Start Guide for future reference.

Keep this equipment away from humidity.

If any of the following situation arises, get the equipment checked by a service technician:

☐ The equipment has been exposed to moisture.

☐ The equipment has been dropped and damaged.

☐ The equipment has an obvious sign of breakage.

☐ The equipment has not been working well or you cannot get it work according to Quick start Guide.

## Copyright Statement

No part of this publication may be reproduced in any form by any means without the prior written permission.

Other trademarks or brand names mentioned herein are trademarks or registered trademarks of their respective companies.

## **WEEE Directive & Product Disposal**

At the end of its serviceable life, this product should not be treated as household or general waste. It should be handed over to the applicable collection point for the recycling of electrical and electronic equipment, or returned to the supplier for disposal.



# Chapter 1 Basic Information

This chapter contains the following sections:

- [In the Box](#)
- [System Requirements](#)
- [Overview](#)

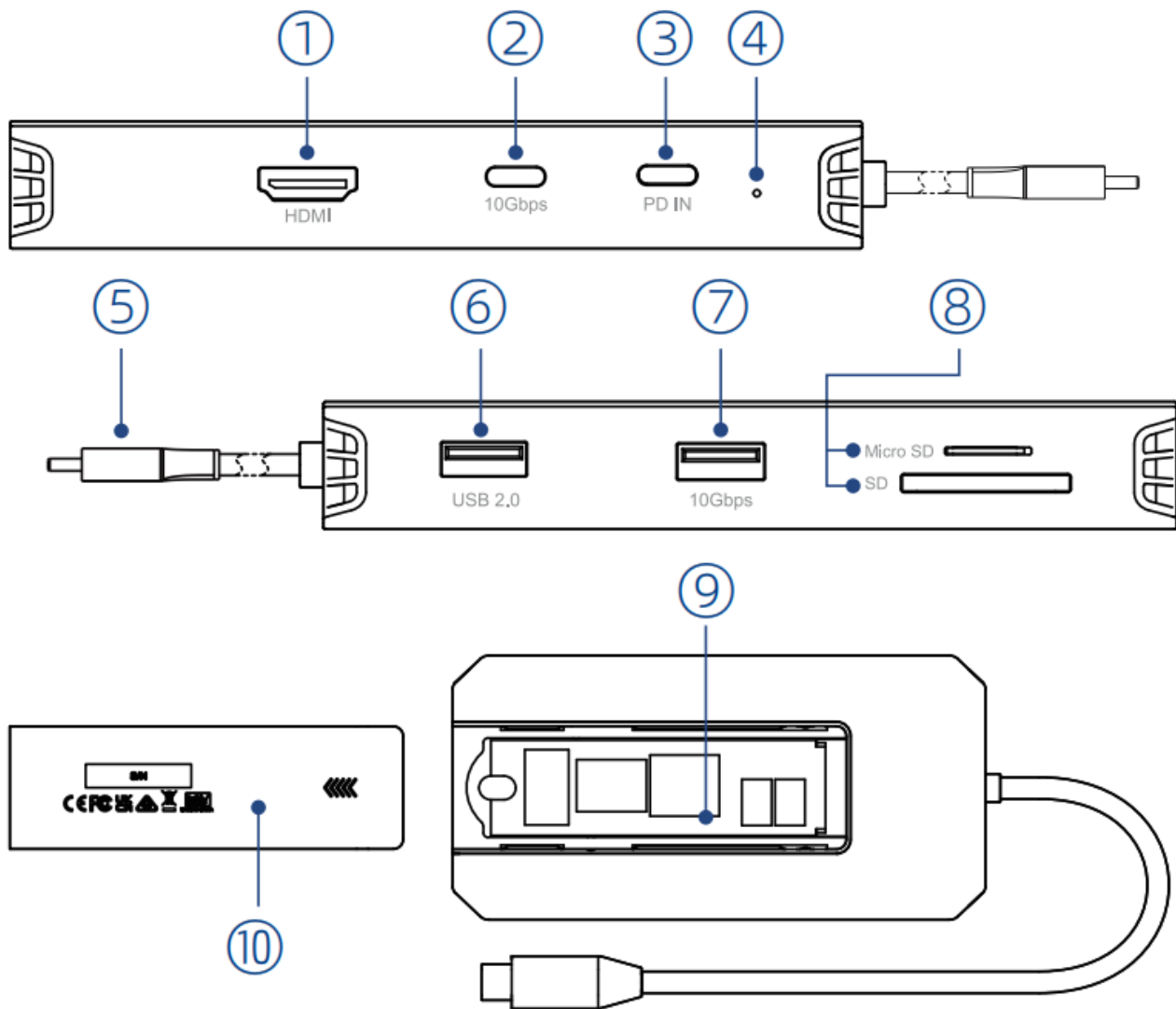
## In the Box

- 1 x USB-C 10G 8K@30Hz Mini Hub
- 1 x Thermally Conductive Silicone Pad
- 2 x Silicone Buckles
- 1 x Quick Start Guide

## System Requirements

- Windows 10/11
- macOS 11 or later
- Laptop/PC at least has one Thunderbolt 3/4 or full-functional USB-C port with Video Alt Mode and Data Transfer

## Overview



- ① HDMI(8K@30Hz)
- ② USB-C(10Gbps)
- ③ USB-C(PD3.0 IN 100W)
- ④ Power LED
- ⑤ USB-C Upstream Port(Host)
- ⑥ USB-A(480Mbps)
- ⑦ USB-A(10Gbps)
- ⑧ SD/TF Card Reader(104MB/s)
- ⑨ M.2 Enclosure(PCIe, SATA)
- ⑩ Cover

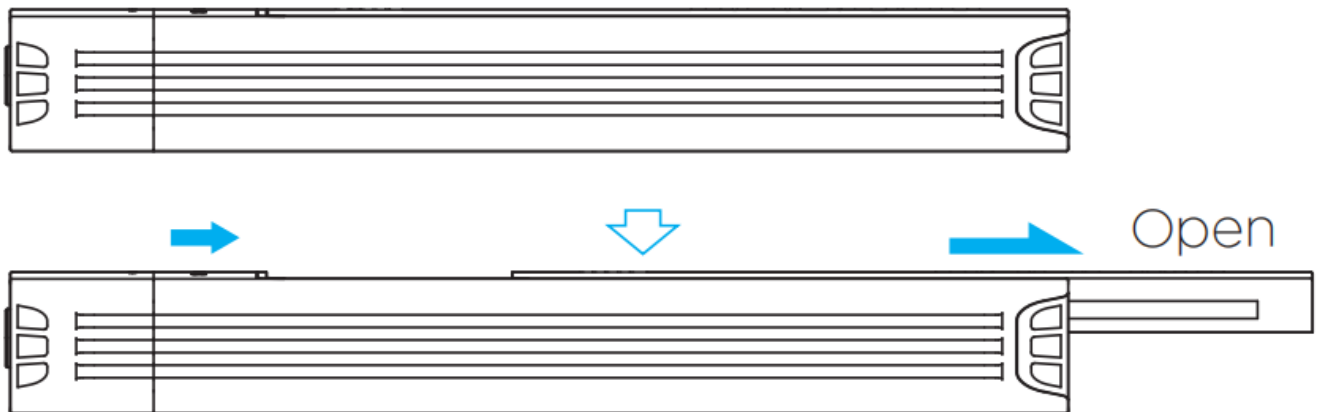
# Chapter 2 SSD Assembly and Connection

This chapter contains the following sections:

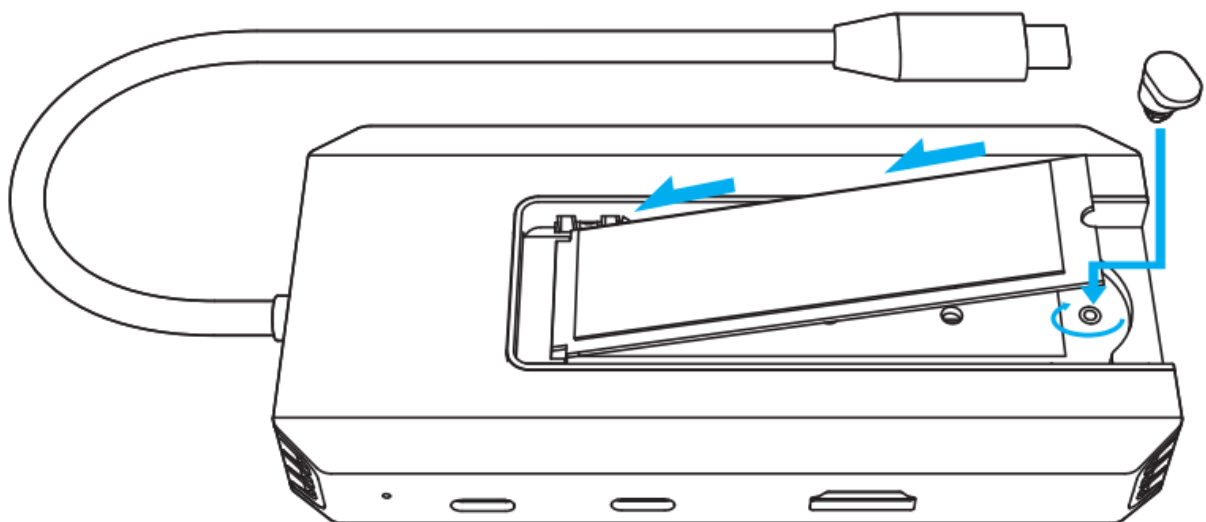
- [SSD Assembly and Connection](#)

## SSD Assembly and Connection

1. Slide the top cover of the SSD enclosure in the direction indicated by the arrow to remove it.



2. Insert the SSD into the slot at a 45-degree angle, then press it down until it lies flat. Secure it in place using the black silicone buckle.



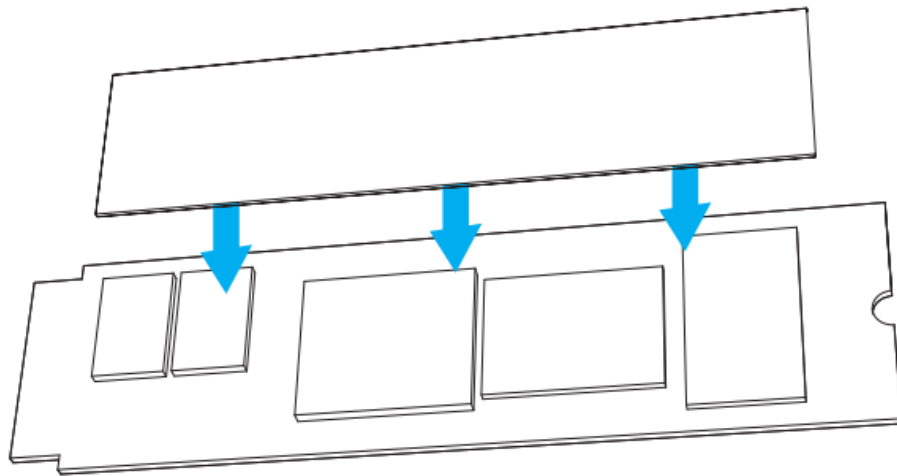
- Attention: To ensure smooth and successful operation of the SSD, we recommend choosing the appropriate SSD sizes: 2230/2242/2260/2280 and applicable



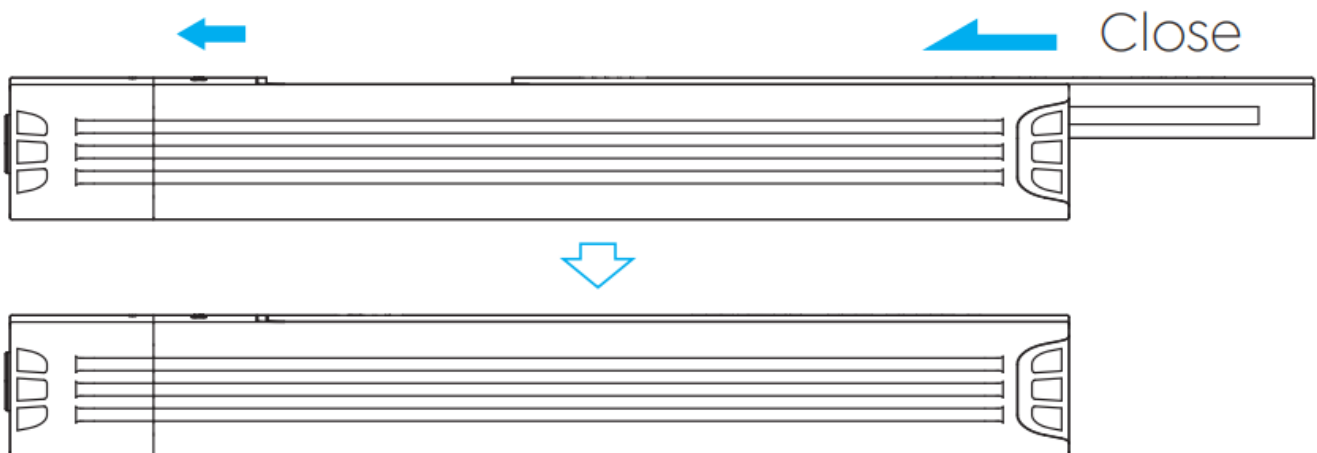
interfaces: M and B+M key.



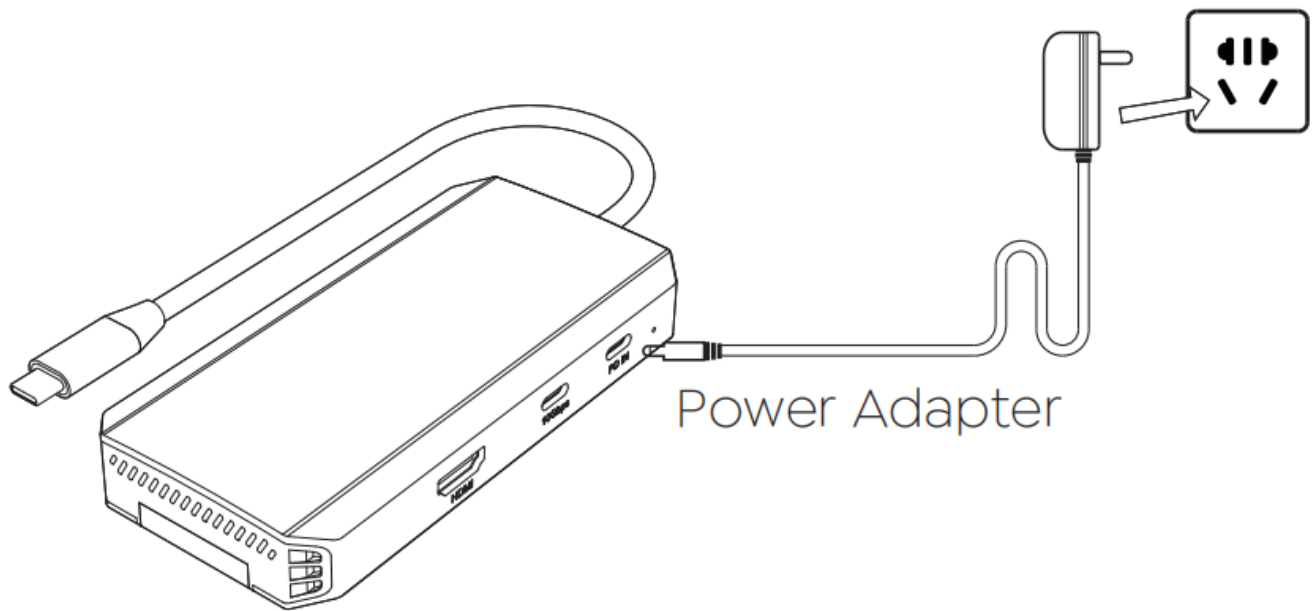
3. Tear off the protective films on both sides of the thermal silicone pad, and stick it on the SSD.



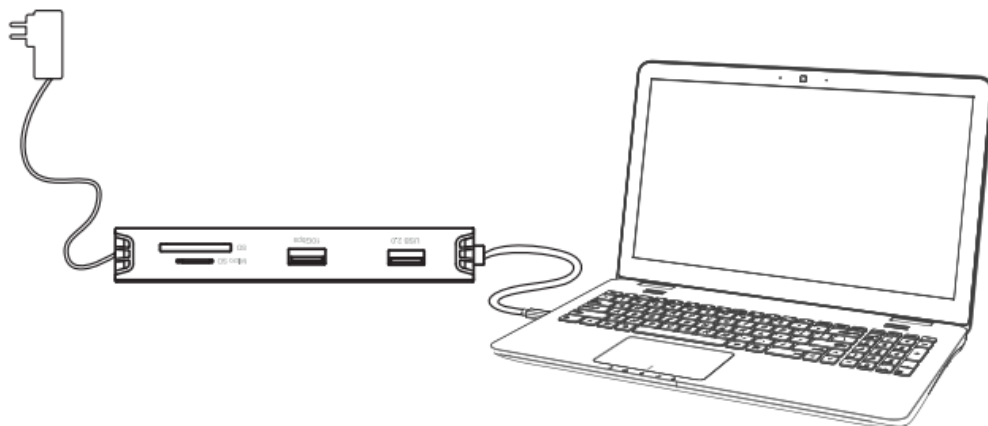
4. Reassemble the top lid in the direction of the arrow.



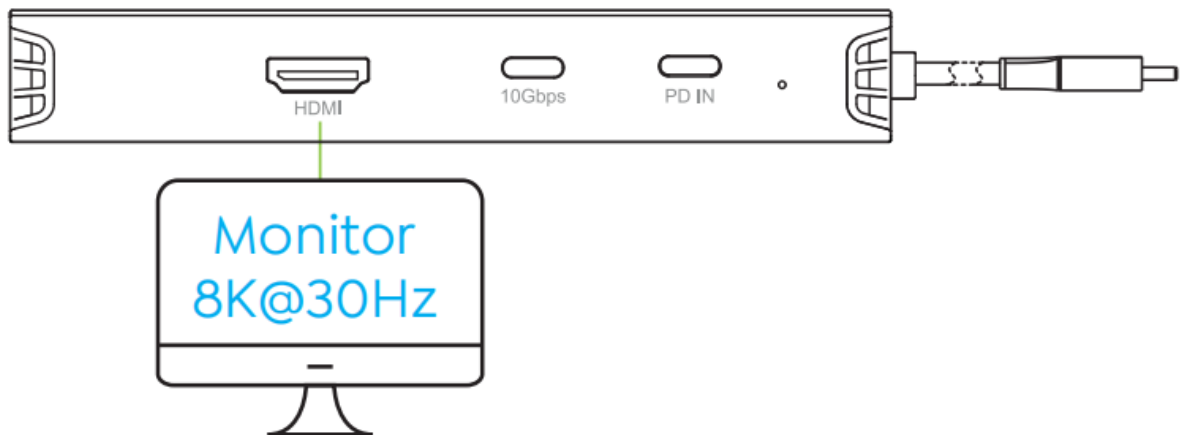
5. Connect an external Power Adapter(100W) to the USB-C PD IN port, and plug the Power Adapter into the Power Outlet.



6. Connect the USB-C cable to the Host.



7. Connect the Monitor to the HDMI port.



Items	HDMI Alt Mode	
Windows	DPI.4(DSC)	7680x4320@30Hz/ 3840x2160@144Hz
	DPI.4	3840x2160@60Hz
	DPI.2	3840x2160@30Hz
Mac	DPI.4(DSC)	7680x4320@30Hz/ 3840x2160@144Hz
	DPI.4	3840x2160@60Hz
	DPI.2	3840x2160@30Hz

# Chapter 3 Partition and Format Installation

This chapter contains the following sections:

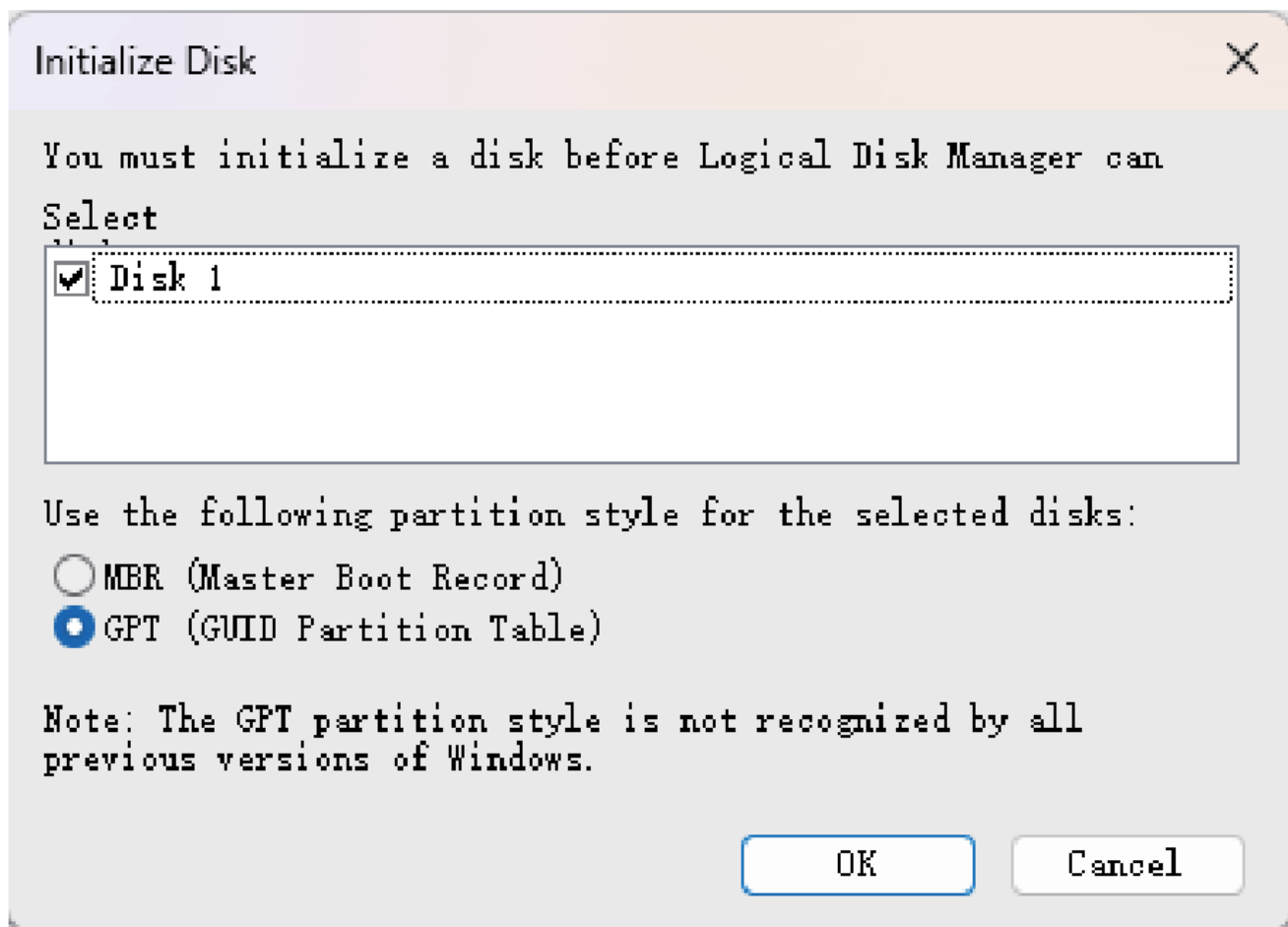
- [Partition and Format Installation](#)

## Partition and Format Installation

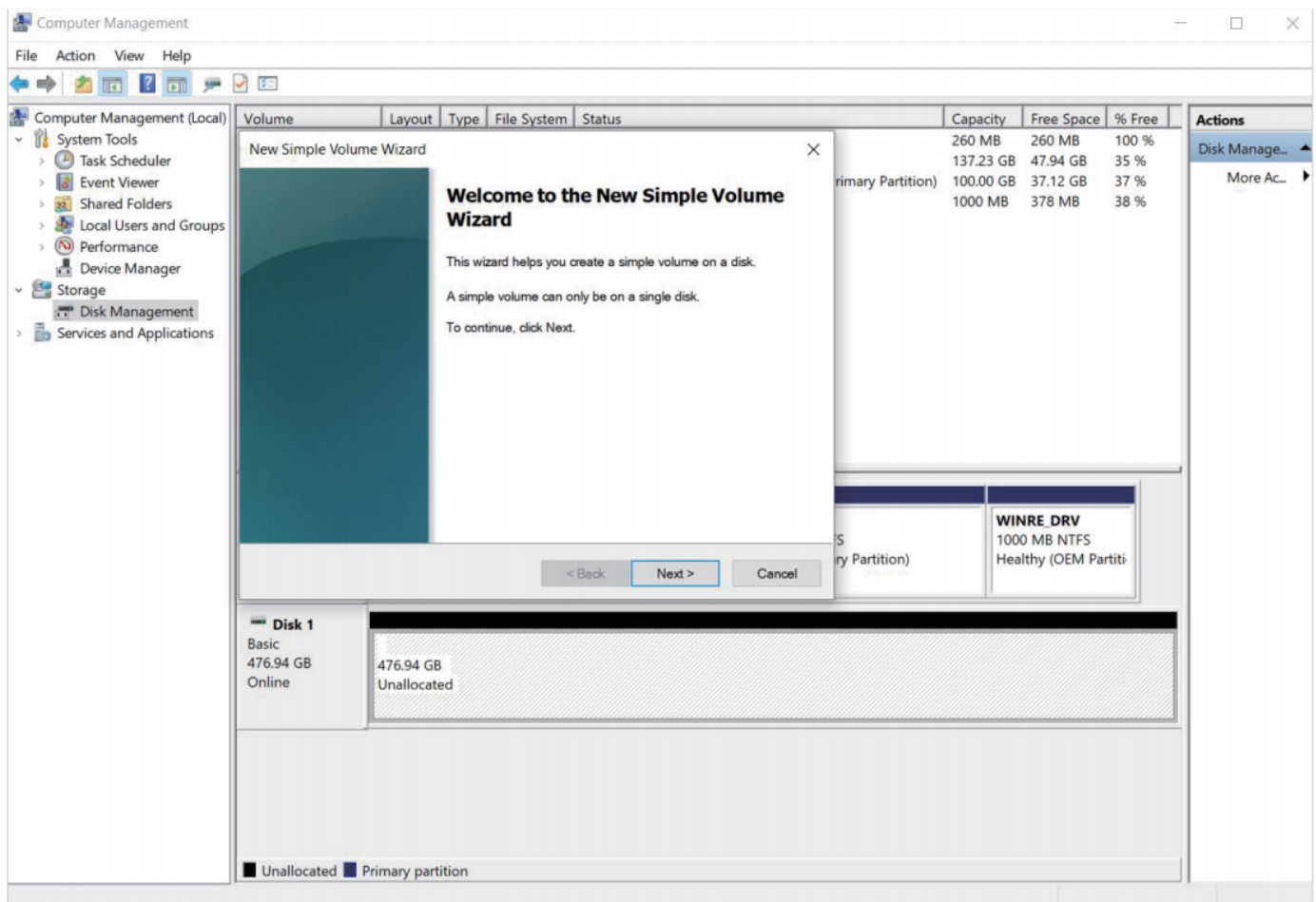
If the SSD is brand-new and unformatted, please perform partition installation so that the computer can read the data normally; If the SSD is formatted and has stored data, you have no need to perform partition installation because the computer can read the data normally.

### For Windows

(1) Right click This PC icon and select **“Manage”**, choose **“Storage”** then go to **“Disk Management”**, select **“MBR(Master Boot Record)”** or **“GPT(GUID Partition Table)”**, click **“OK”**.



(2) Right click your disk, choose **“New Simple Volume”** and select **“Next”** to proceed.



(3) Select the **File system**, **Allocation unit size** and **Volume label** from the Erase or use the default one.

New Simple Volume Wizard

×

**Format Partition**  
To store data on this partition, you must format it first.

Choose whether you want to format this volume, and if so, what settings you want to use.

☐ Do not format this volume

☒ Format this volume with the following settings:

File system:

Allocation unit size:

Volume label:

☒ Perform a quick format

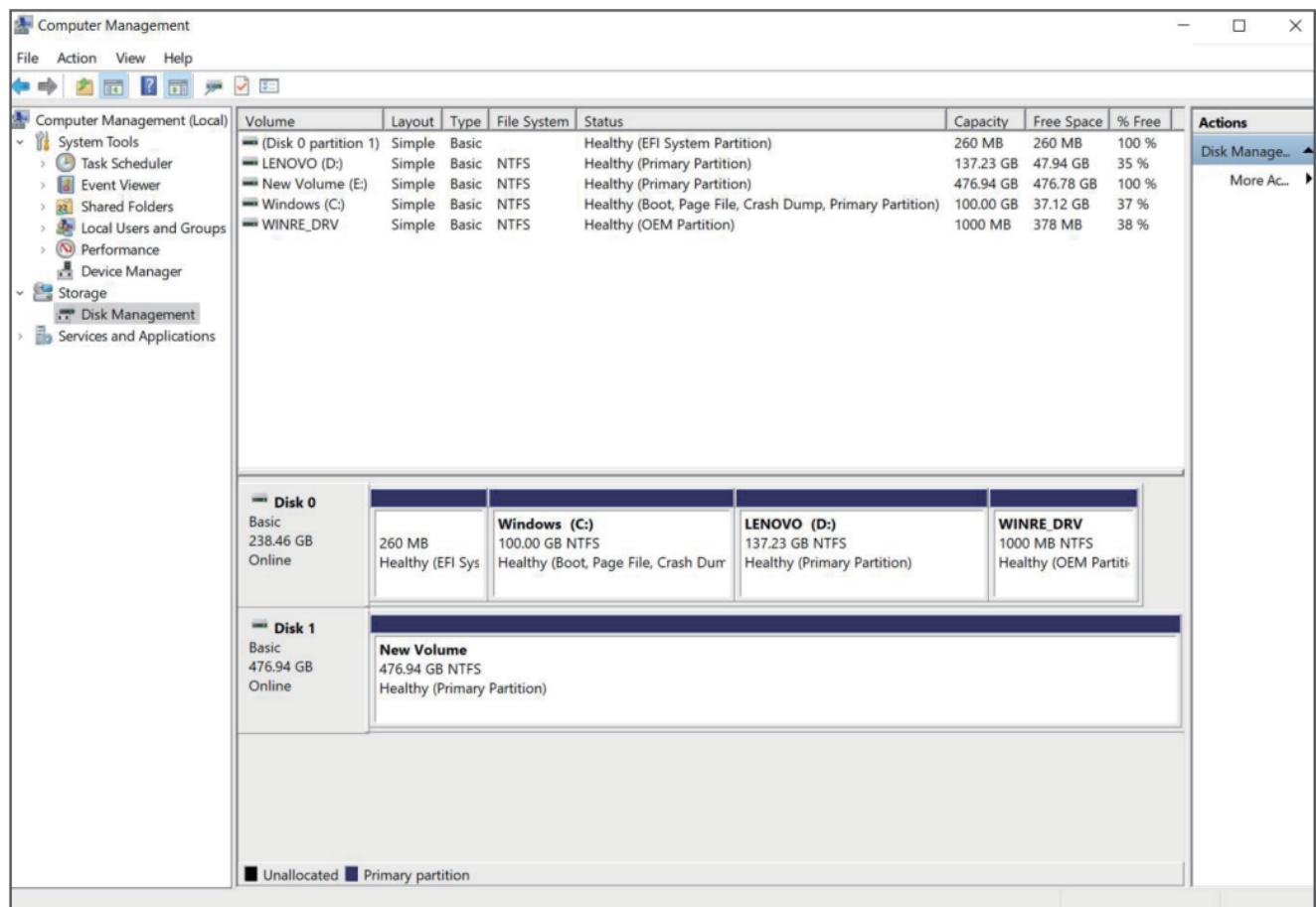
☐ Enable file and folder compression

< Back

Next >

Cancel

(4) Follow the instructions step by step to complete format installation.



- For Windows computer, the maximum speed of the disk is achieved by selecting **Better Performance** from the **Policies** in the Windows **Drive Properties**. We do not recommend doing this if you are not aiming for ultimate performance

## For Mac

- (1) After connecting to the product, there is a prompt window **“The disk you attached was not readable by this computer”** popping up.
- (2) Select **“Initialize...”** in the pop-up prompt window.





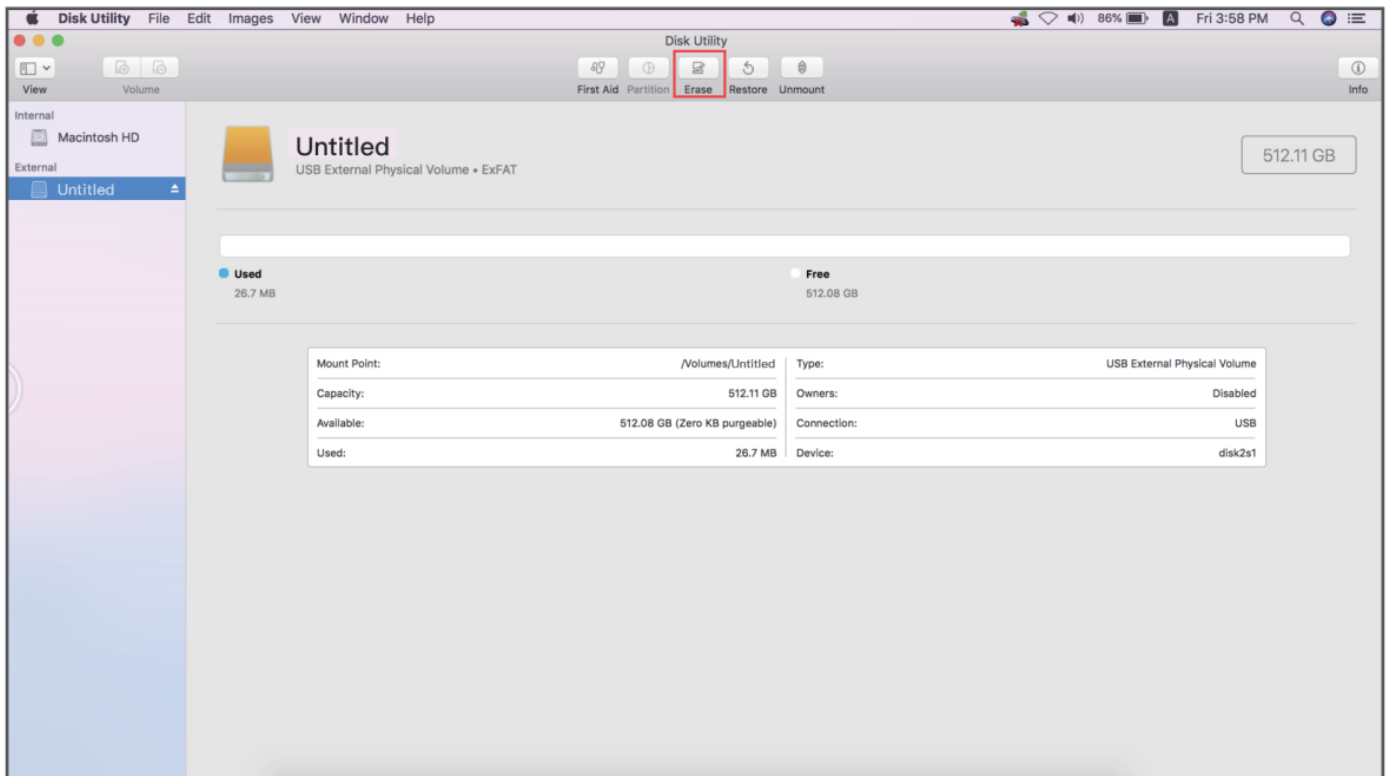
**The disk you attached was not  
readable by this computer.**

Eject

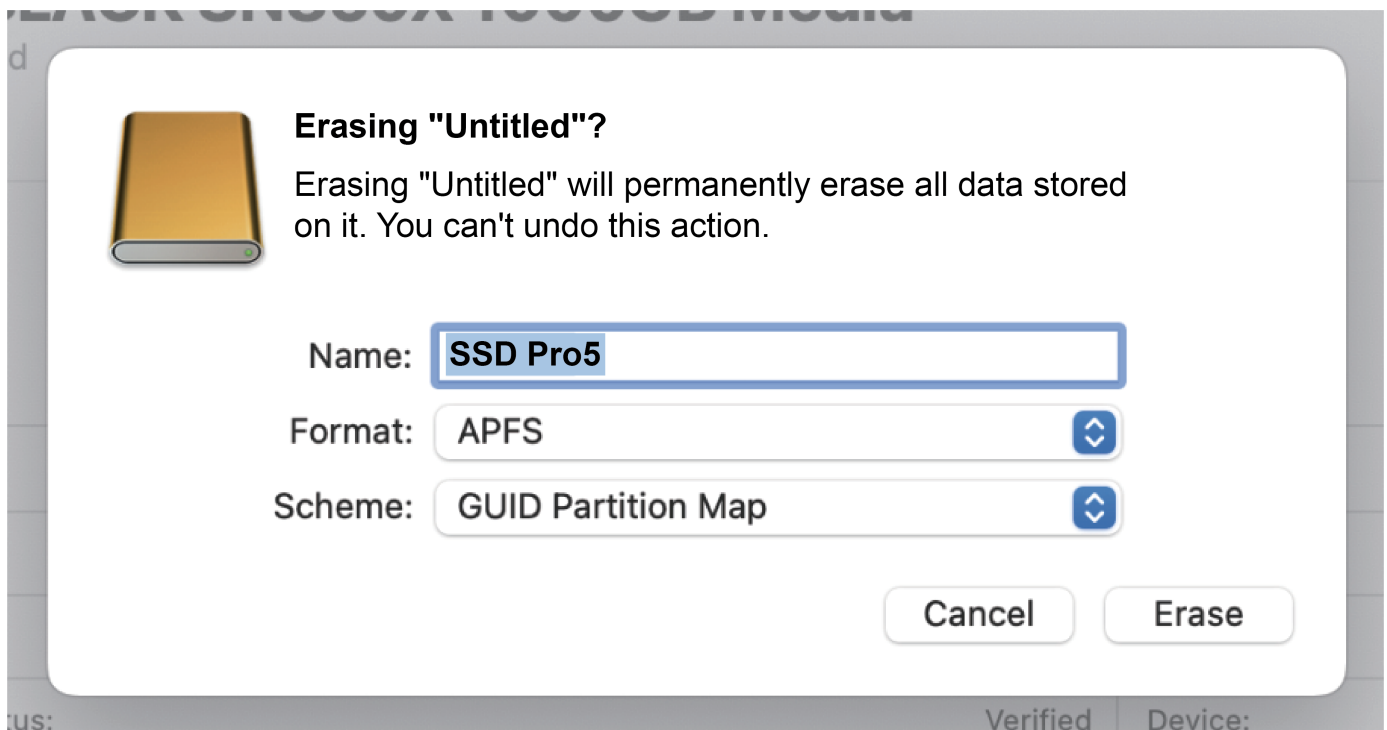
Ignore

Initialize...

(3) Click **“Erase”** to pop up the Settings window.



(4) Select the **"Name"**, **"Format"** and **"Scheme"** from the Erase or use the default one.



(5) Click **"Done"** to complete the installation.



## Erasing “Untitled” and creating “SSD Pro5”.



Erase process is complete. Click Done to continue.

▼ Hide Details

Setting volume permissions

**Operation successful.**

Done

# Chapter 4 After-Sales Service

This chapter contains the following sections:

- [After-Sales Service](#)

## After-Sales Service

# Need help?

We're here for you!



**Online support: [wavlink.com](https://wavlink.com)**

Available Mon-Fri 8:30 am-5:30pm (UTC+8)



**[support@wavlink.com](mailto:support@wavlink.com)**

Available Mon-Fri 8:30 am-5:30pm (UTC+8)



**+1 8889730883**

Mon-Fri 9:00 am - 6:00 pm (UTC-5)

**[www.wavlink.com](https://www.wavlink.com)**



**Thank you for purchasing  
WAVLINK product!**