

WAVLINK



see the world

User Manual

**USB-C/USB-A to HDMI/DisplayPort Triple Display
Adapter**

Model: WL-UG7701

@WavlinkOfficial

@WavlinkTechSupport

Table of contents:

- About This Guide
 - Conventions
 - More Info
 - Performance Disclaimer
 - Safety Instructions
 - Copyright Statement
 - WEEE Directive & Product Disposal
- Chapter 1 Overview
 - Overview
 - Package Content
 - System Requirement
 - Product Overview
- Chapter 2 Connection and Resolution
 - Connection and Resolution
 - How to Connect
 - Display Resolution
- Chapter 3 Driver Installation
 - Driver Installation
 - For Windows OS
 - For Mac OS
- Chapter 4 Display Mode Setting
 - Display Mode Settings
 - For Windows
 - For Mac OS
 - For Mac OS X13
- Chapter 5 FAQ and After-sale Service
 - FAQ
 - After-sale Service

About This Guide

This guide serves as a companion to the Quick Installation Guide for your wired USB product. The Quick Installation Guide provides essential steps for immediate setup, while this document offers detailed explanations of product features and advanced configuration options.

Please note that product functionality may vary slightly depending on your specific model, software version, geographic region, language, and connected devices. Screenshots, parameters, and descriptions in this guide are for illustrative purposes only.

Conventions

In this guide the following conventions are used :

| Convention | Description |
|-------------------|--|
| <u>Underlined</u> | Underlined words or phrases are hyperlinks. You can click to redirect to a website or a specific section. |
| Teal | The content and text that needs to be emphasized on the web page is the theme color #1D428A , including menus, items, buttons, etc. |
| Note: | Critical reminders to prevent operational errors or functionality issues. |
| Tips: | Best practices or optimization suggestions for enhanced performance. |

More Info

The latest driver, firmware and utilities are available from the Download Center at [WAVLINK SUPPORT](#) .

Included in your product packaging or available digitally via the link above.

If you encounter any issues, please don't hesitate to email contact@wavlink.com / techsupport@wavlink.com / postsales@wavlink.com to provide feedbacks or contact online customer service, thank you !

Performance Disclaimer

The maximum transfer speeds stated for this product are based on theoretical limits of USB specifications (e.g., USB 2.0/3.0/3.1 Gen 1/Gen 2). Actual performance may vary due to:

Device limitations: Host system performance, driver compatibility, and connected device capabilities.

Environmental factors: USB cable quality, length, electromagnetic interference, and port power delivery.

Network/software conditions: Operating system overhead, background processes, and concurrent data transfers.

Wired connections are generally more stable than wireless alternatives, but performance is not guaranteed and depends on the factors listed above.

Information in this document is subject to change without notice. The manufacturer does not make any representations or warranties (implied or otherwise) regarding the accuracy and completeness of this document and shall in no event be liable for any loss of profit or any commercial damage, including but not limited to special, incidental, consequential, or other damage.

Safety Instructions

Always read the safety instructions carefully.

Keep this Quick Start Guide for future reference.

Keep this equipment away from humidity.

If any of the following situation arises, get the equipment checked by a service technician:

□ The equipment has been exposed to moisture.

□ The equipment has been dropped and damaged.

□ The equipment has an obvious sign of breakage.

□ The equipment has not been working well or you cannot get it work according to Quick Start Guide.

Copyright Statement

No part of this publication may be reproduced in any form by any means without the prior written permission.

Other trademarks or brand names mentioned herein are trademarks or registered trademarks of their respective companies.

WEEE Directive & Product Disposal

At the end of its serviceable life, this product should not be treated as household or general waste. It should be handed over to the applicable collection point for the recycling of electrical and electronic equipment, or returned to the supplier for disposal.



Chapter 1 Overview

This chapter contains the following sections :

- [Package Content](#)
- [System Requirement](#)
- [Product Overview](#)

Overview

Package Content

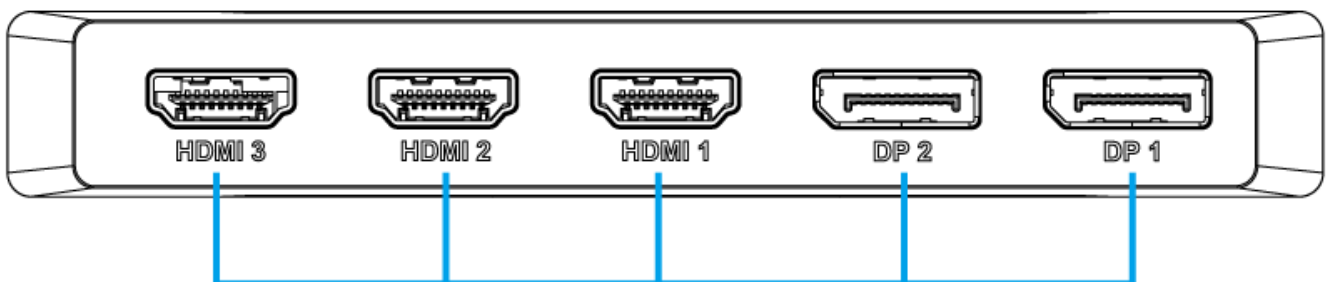
This docking station includes the following items, please check it before using.

- USB-C/USB-A to HDMI/DisplayPort Triple Display Adapter
- USB-C to USB-C Cable with USB-C to USB-A Adapter(1m)
- Quick Start Guide

System Requirement

- Microsoft Windows 10/11
- Apple Mac OS 10.8 or later
- Compatible with Thunderbolt 4/3, USB4/3.2/3.1/3.0/2.0 Type-C/Type-A Hosts

Product Overview



HDMI 3/HDMI 2/HDMI 1/DisplayPort 2/DisplayPort 1

(Max. Three simultaneous video outputs at 4K@60Hz are supported)



Power
LED

Upstream
USB-C Host
(10Gbps, 95W)

USB-C PD IN
(100W)

Chapter 2 Connection and Resolution

This chapter contains the following sections :

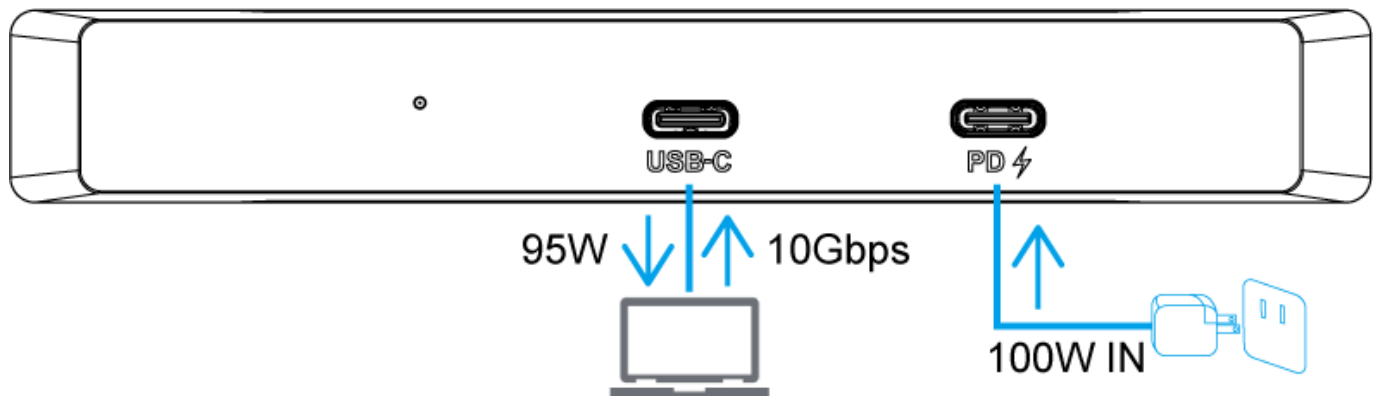
- [How to Connect](#)
- [Display Resolution](#)

Connection and Resolution

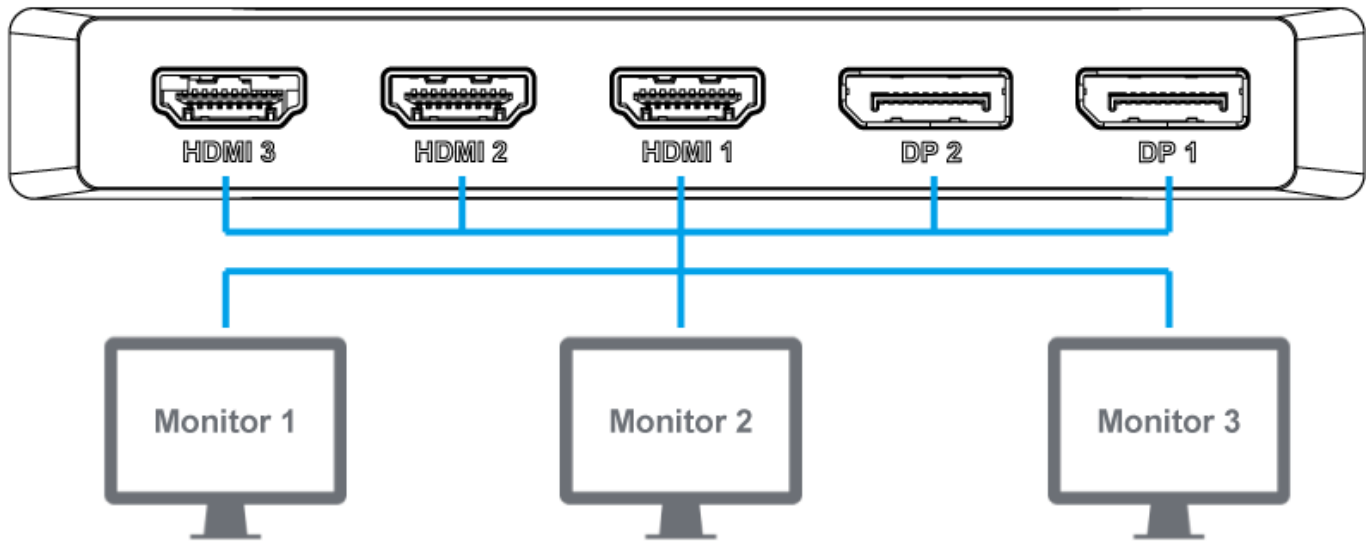
How to Connect

Note: Before connecting, please ensure the host computer has installed the Driver(referring to **Driver Installation**).

1. Connect to the Host, plug one end of the USB-C cable to the Upstream USB-C of Adapter, then plug another end to the USB-C on the computer(if it is USB-A, use the USB-C to USB-A Adapter to connect).



2. Connect to the Monitors, this adapter supports max. 3 displays, please select any one/two/three of them to extend/mirror the screen.



(Max. Three simultaneous video outputs are supported,
single/dual/triple 4K@60Hz)

Display Resolution

| Display Mode | Windows/Mac |
|------------------------------|----------------|
| Single Extend/Mirror Display | 3840×2160@60Hz |
| Dual Extend/Mirror Display | 3840×2160@60Hz |
| Triple Extend/Mirror Display | 3840×2160@60Hz |

Chapter 3 Driver Installation

This chapter contains the following sections :

- [For Windows OS](#)
- [For Mac OS](#)

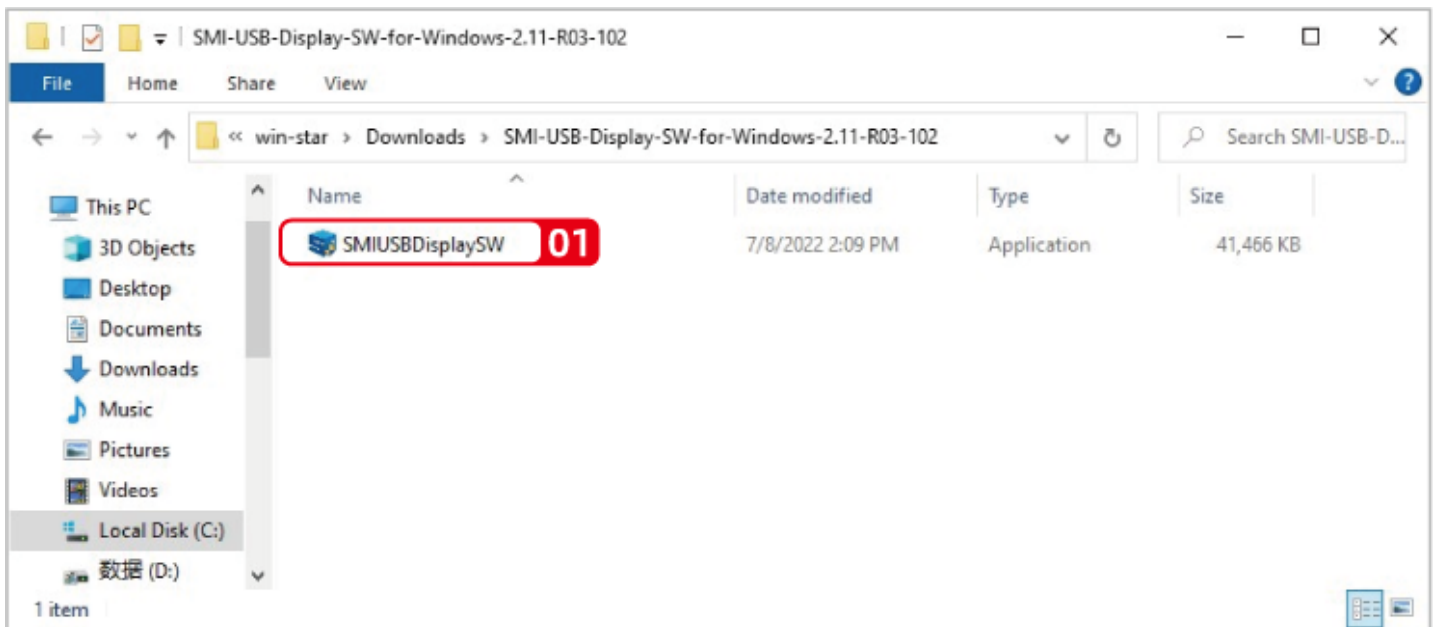
Driver Installation

Before using this adapter, please make sure the latest PC/laptop driver has been installed. If driver can not be installed automatically, please visit

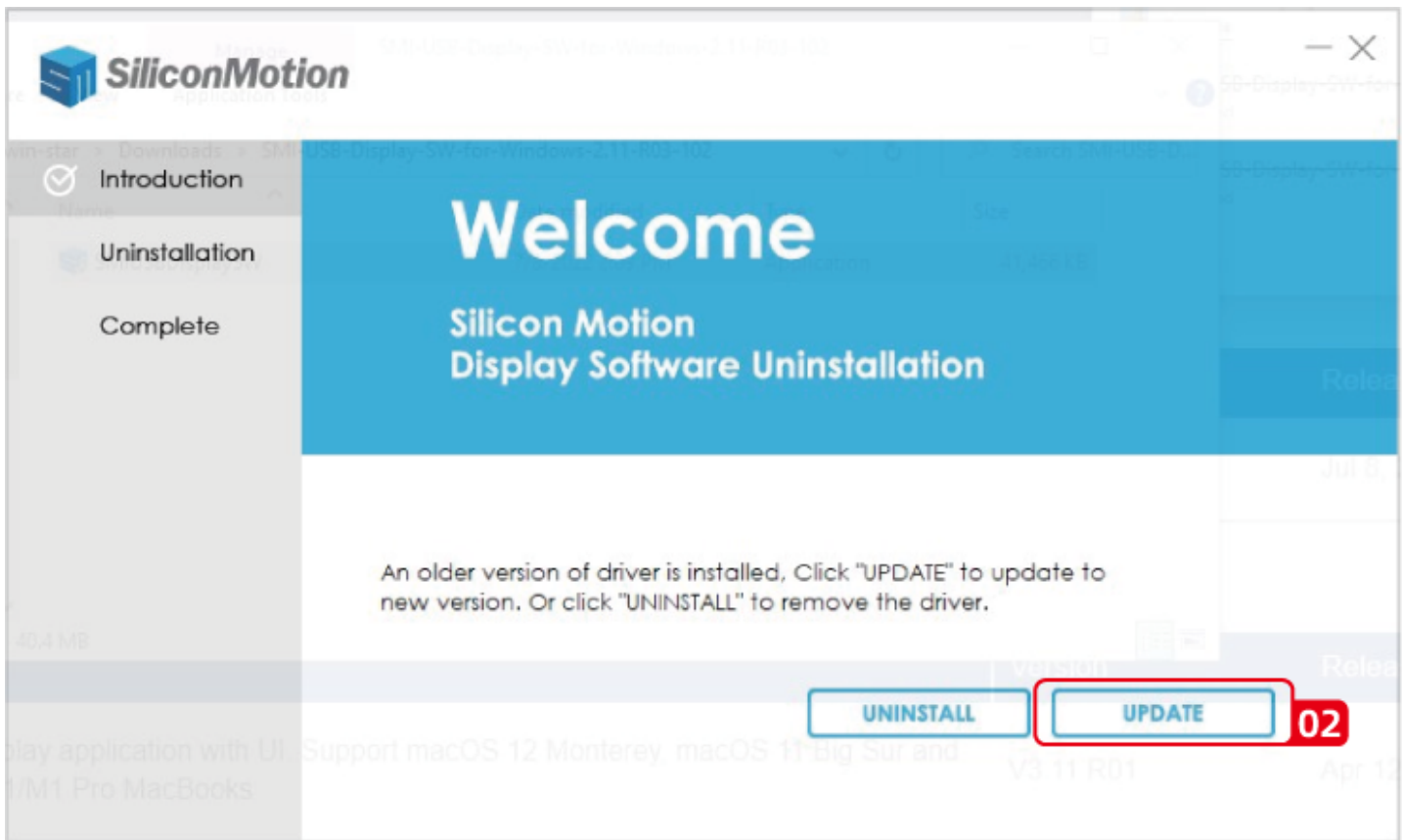
www.wavlink.com/en_us/WL-UG7701 or enter www.siliconmotion.com to find and install it.

For Windows OS

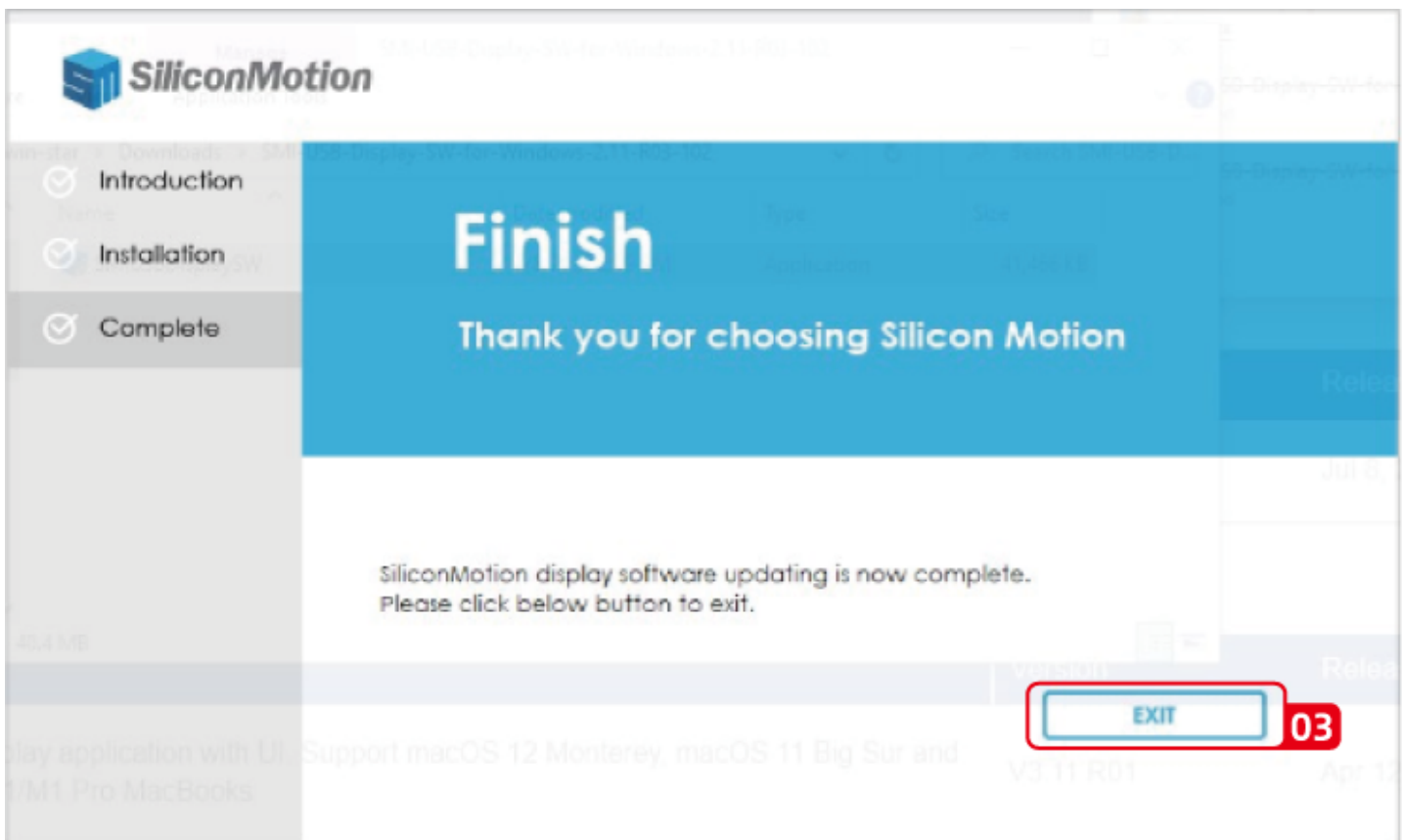
1. After extracting the file downloaded, click **SMIUSBDisplaySW(.exe)** in the extracted file.



2. Click **UPDATE**.



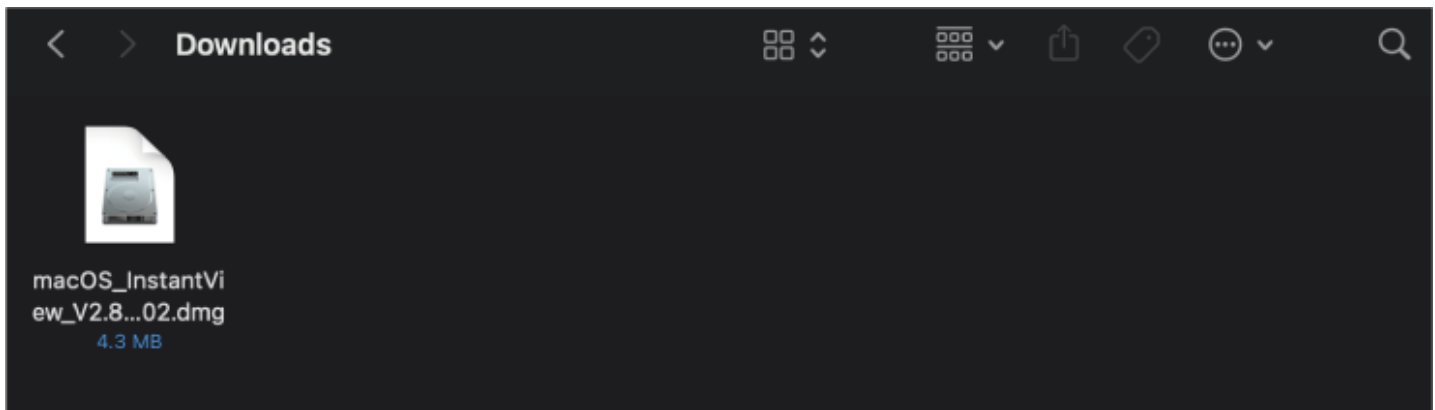
3. Click **EXIT** to finish the installation process.



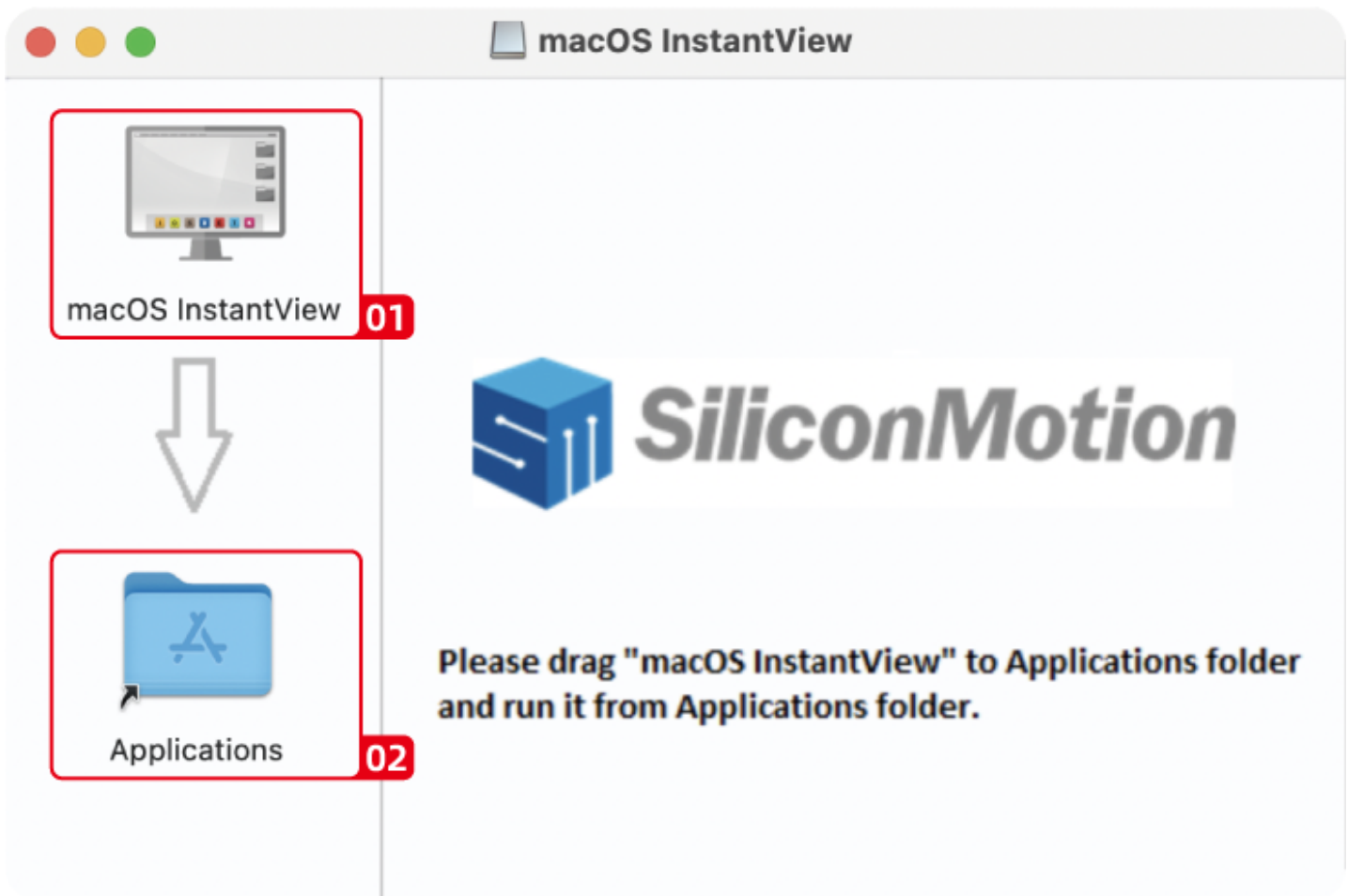
For Mac OS

Download the Silicone Motion InstantView application for Mac OS found here: www.wavlink.com/en_us/WL-UG7701 to find and manually install it.

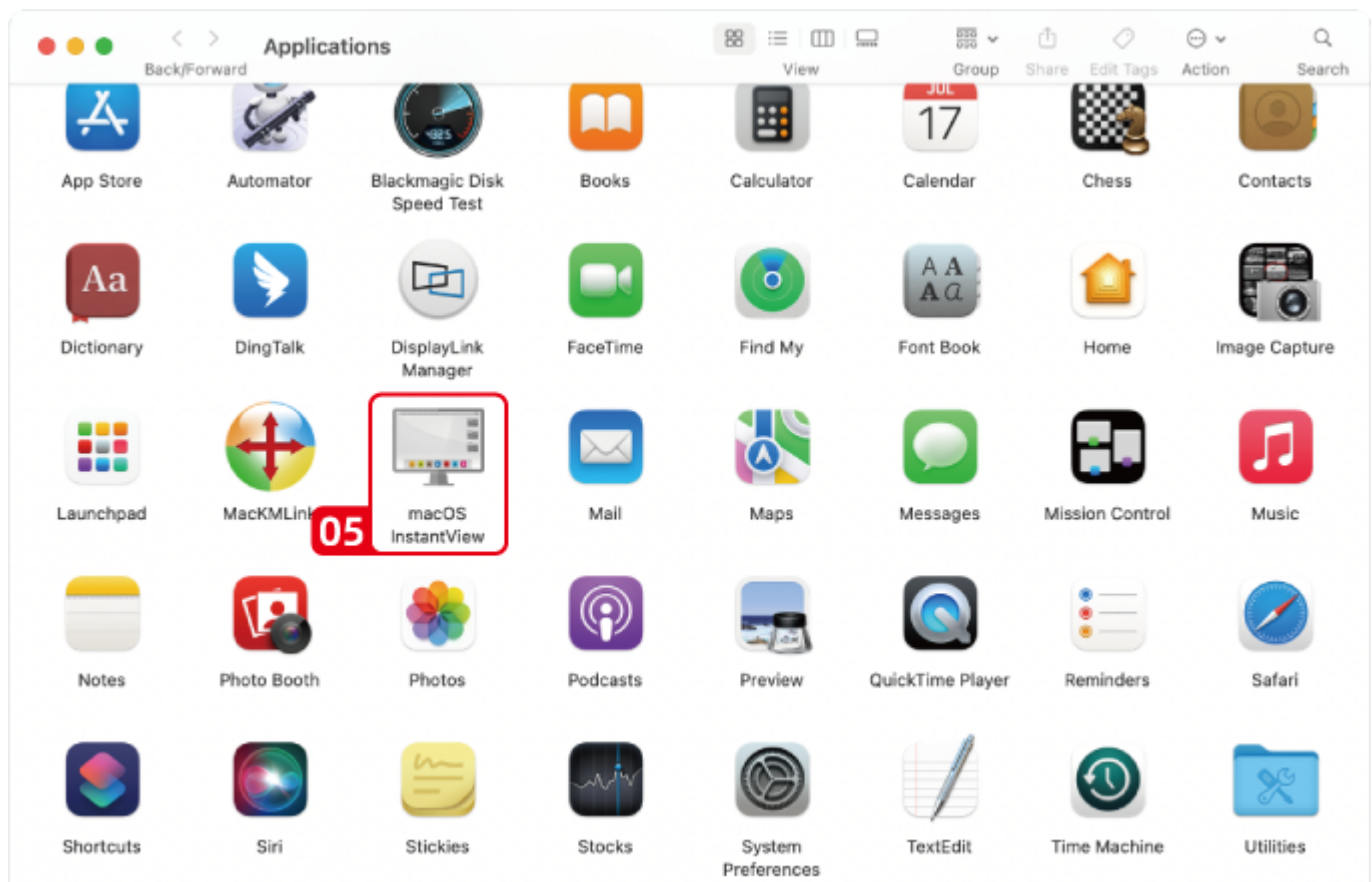
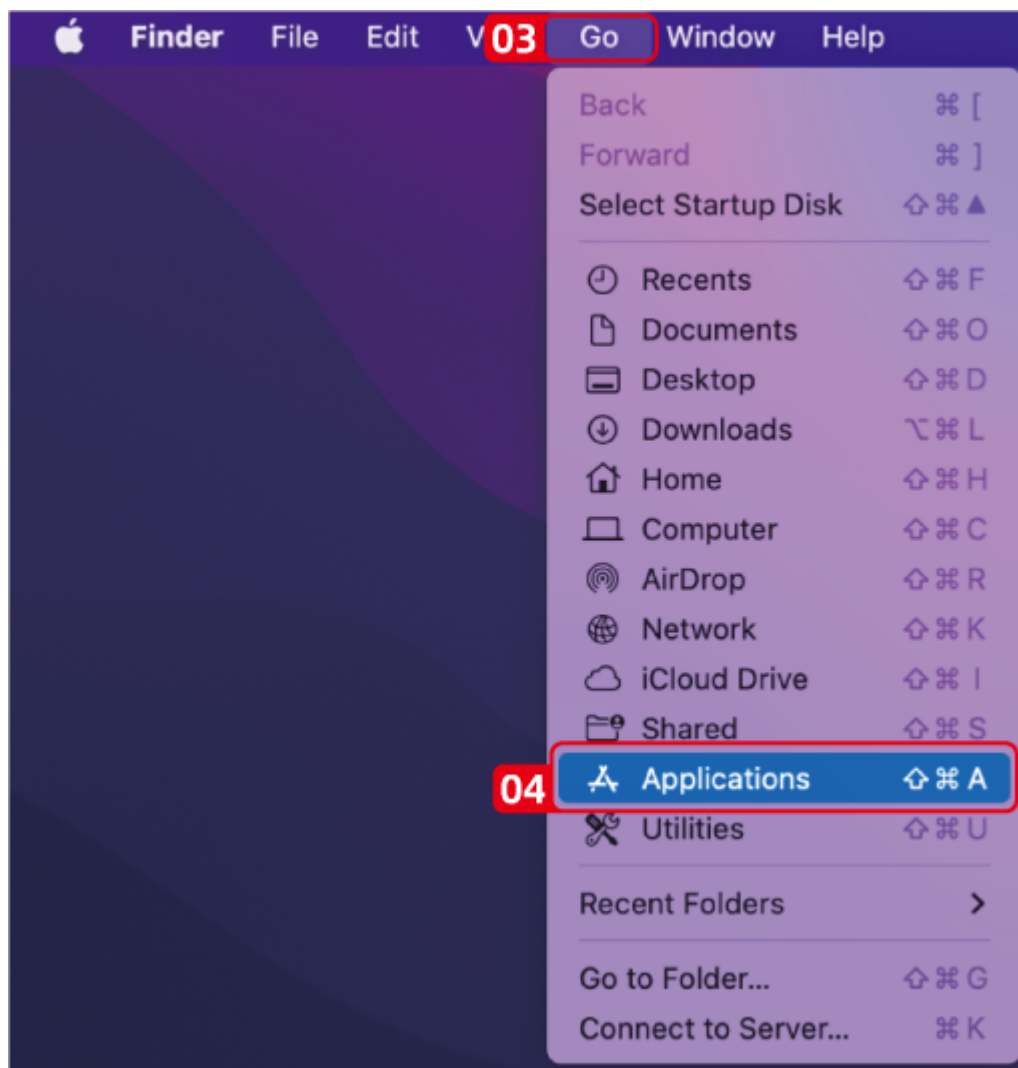
1. Double click on the file you downloaded to start the application installer.



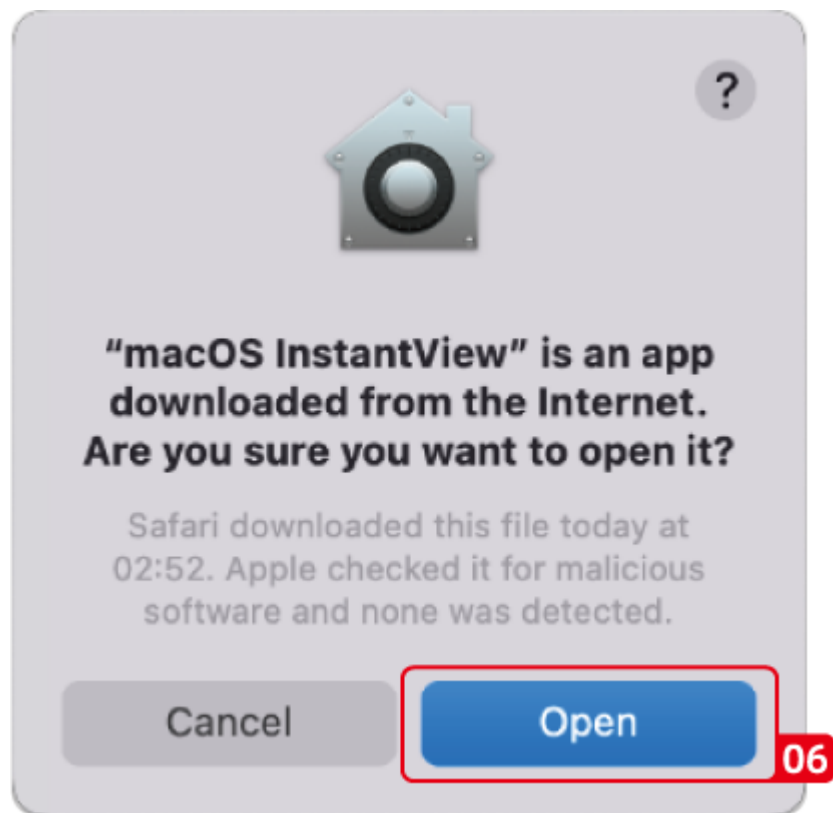
2. Drag the **macOS InstantView** application icon into the **applications** folder in the open window.



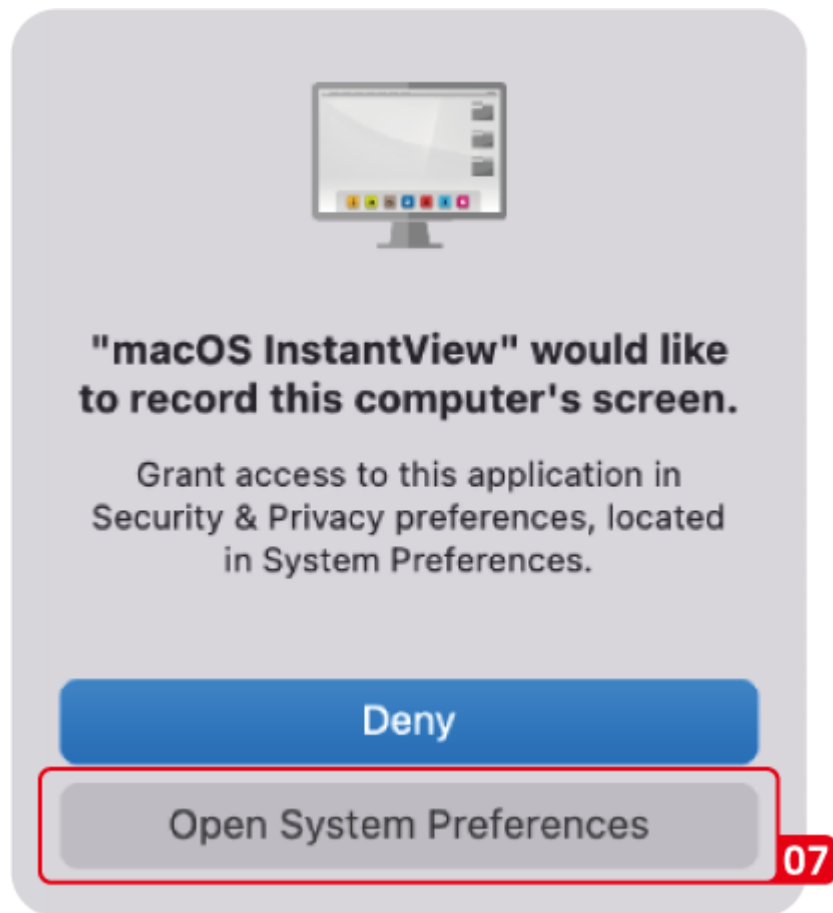
3. Navigate to your launchpad or applications folder to find the **macOS InstantView** and double click to launch it.



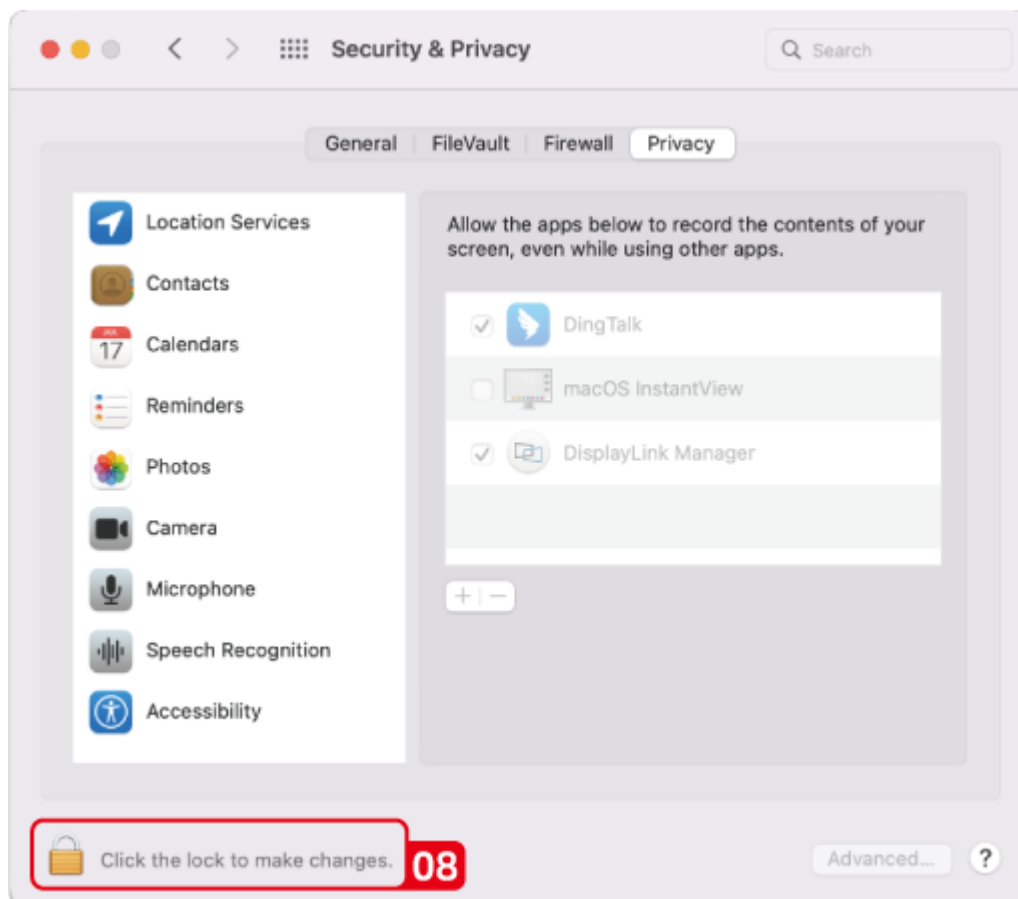
4. Click **Open**.



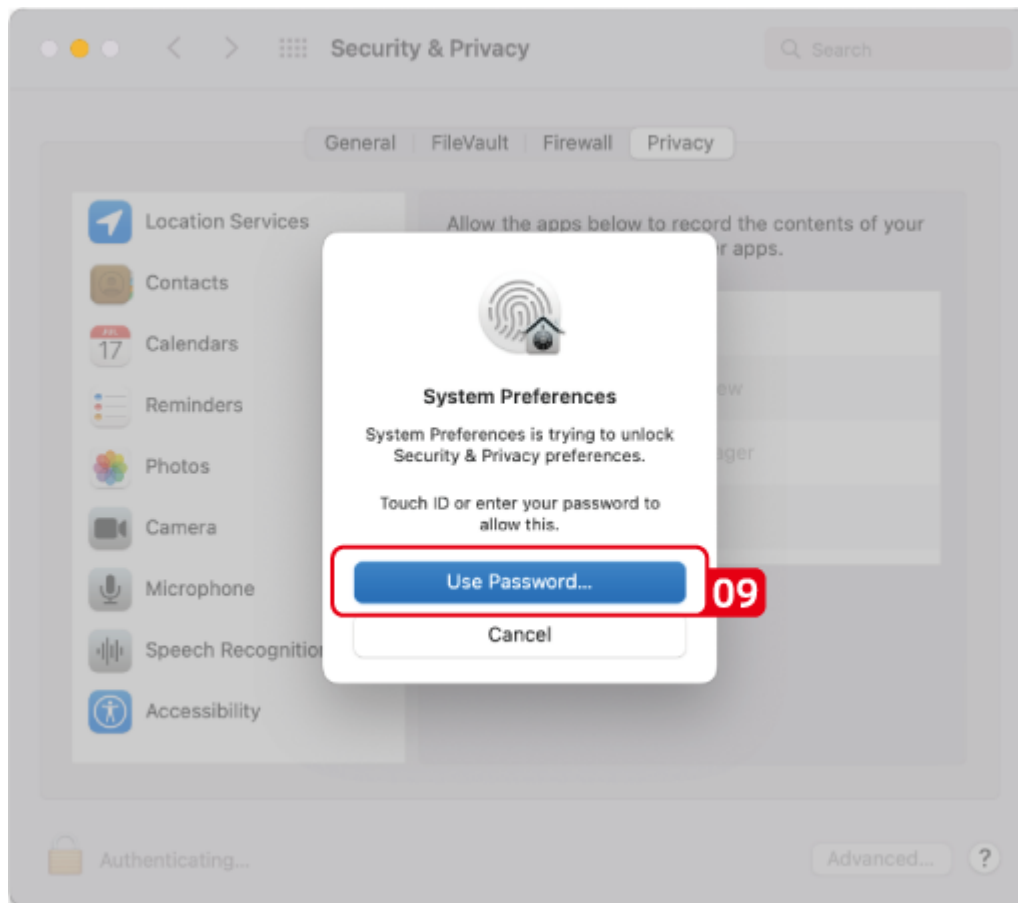
5. Click **Open System Preferences**. (Note: this should automatically open the **Security and Privacy** section, but if it does not, you can manually open the **Security and Privacy settings**.)

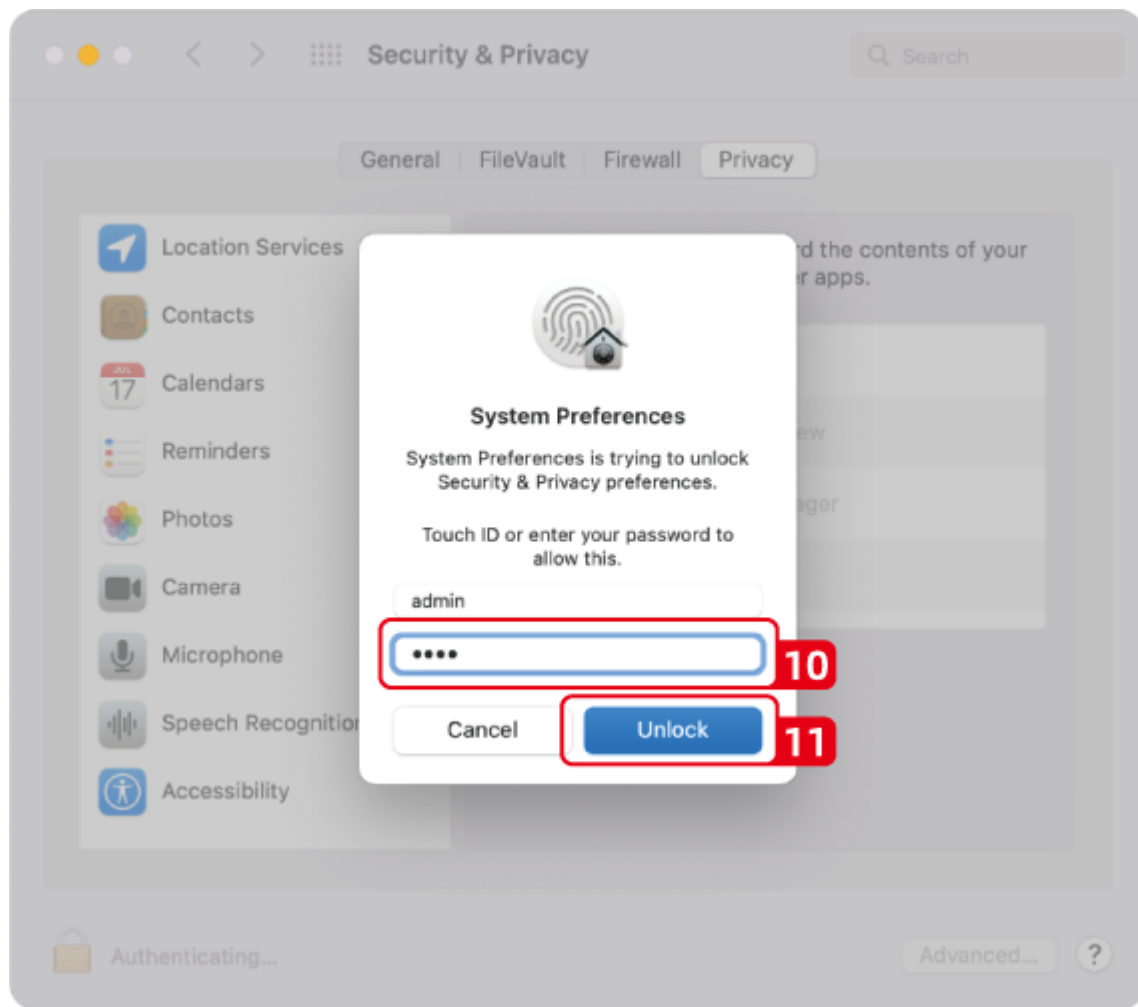


6. Click on the gold pad lock on the bottom of the application window to enable changes.

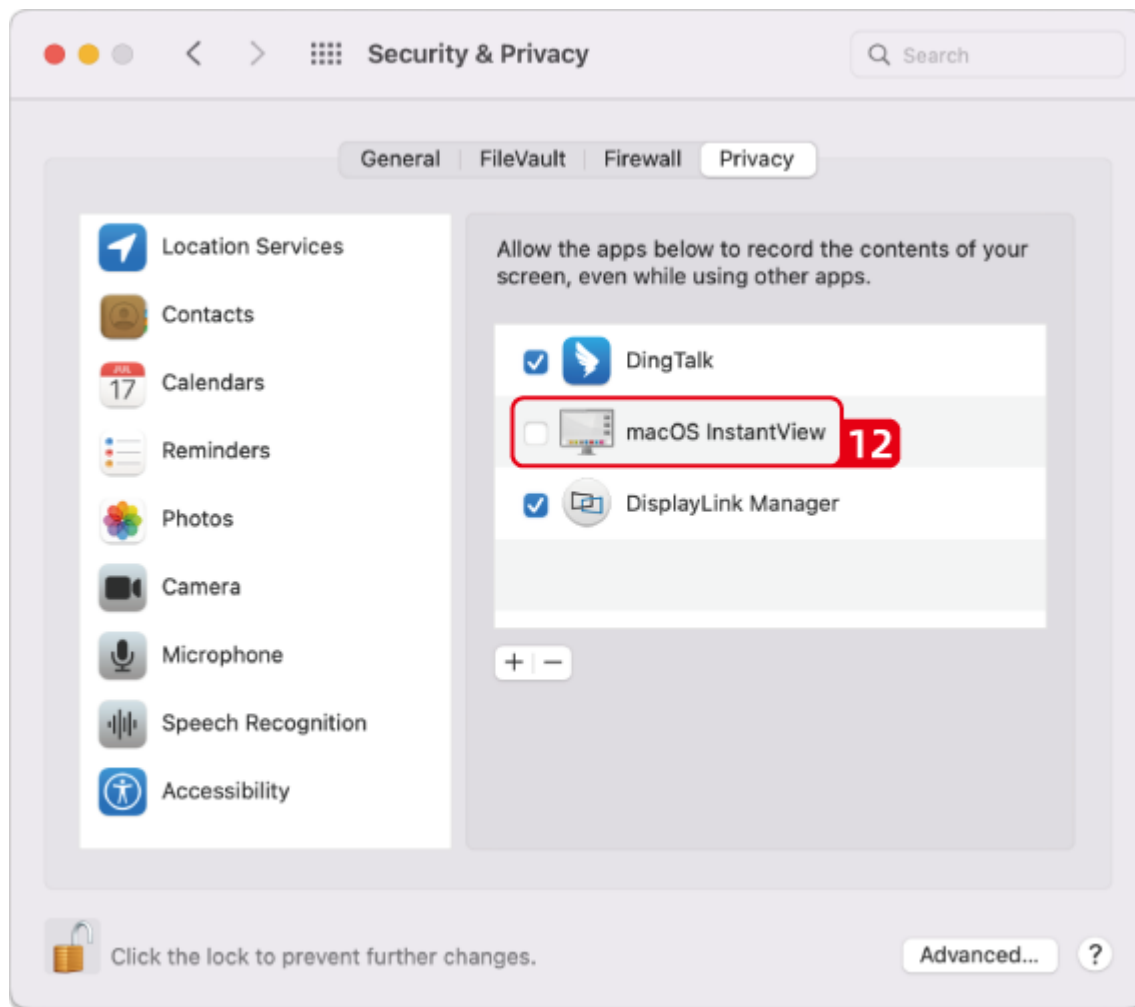


7. If promoted, enter your password and click the **Unlock** button.

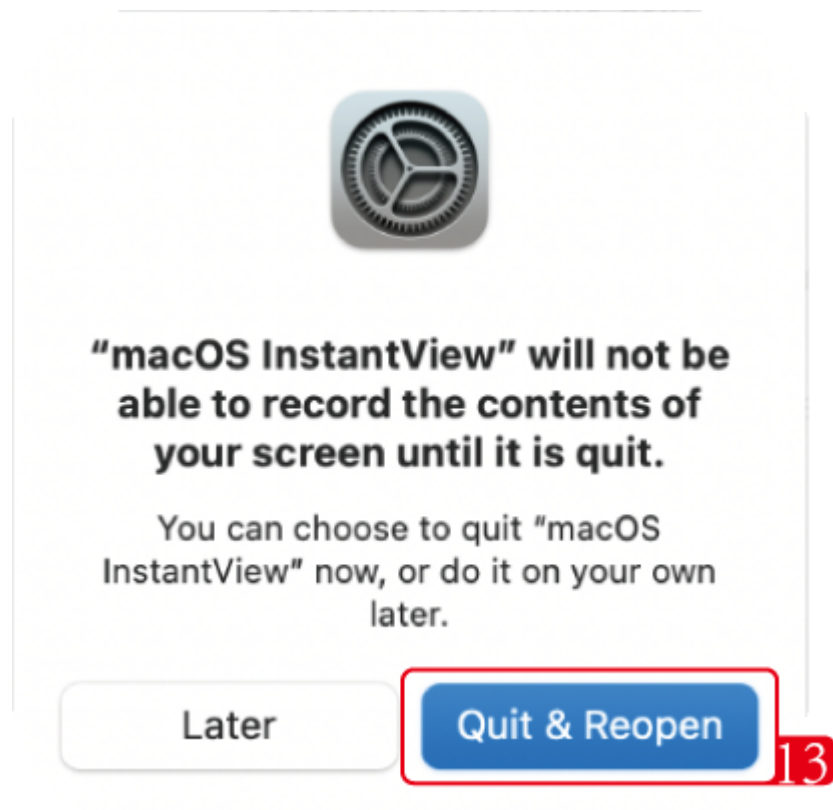




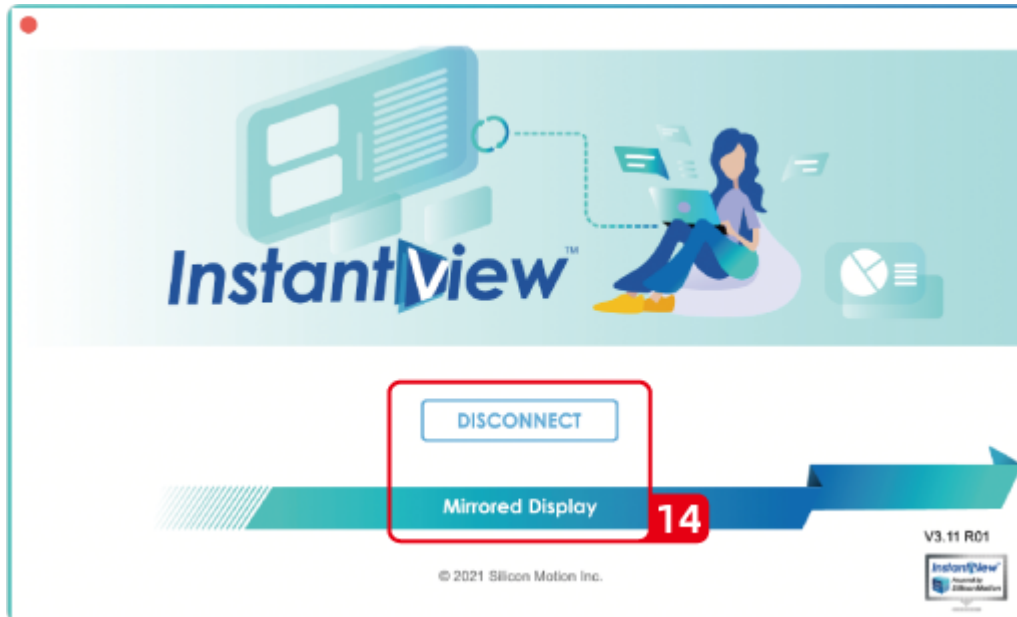
8. Click to and place a check mark next to the macOS InstantView entry.



9. You will be prompted to **Quit and Reopen** the InstantView application in order for the change take effect. So please do so:



10. The software has now been installed and you may connect your graphics adapter or docking station.
11. When the computer is connected to the docking station for the first time, the following window will appear after the driver is started. You can choose to disconnect or mirror the screen according to your personal usage. In addition, you can also close this window and go to the system settings to set the screen.



Chapter 4 Display Mode Setting

This chapter contains the following sections :

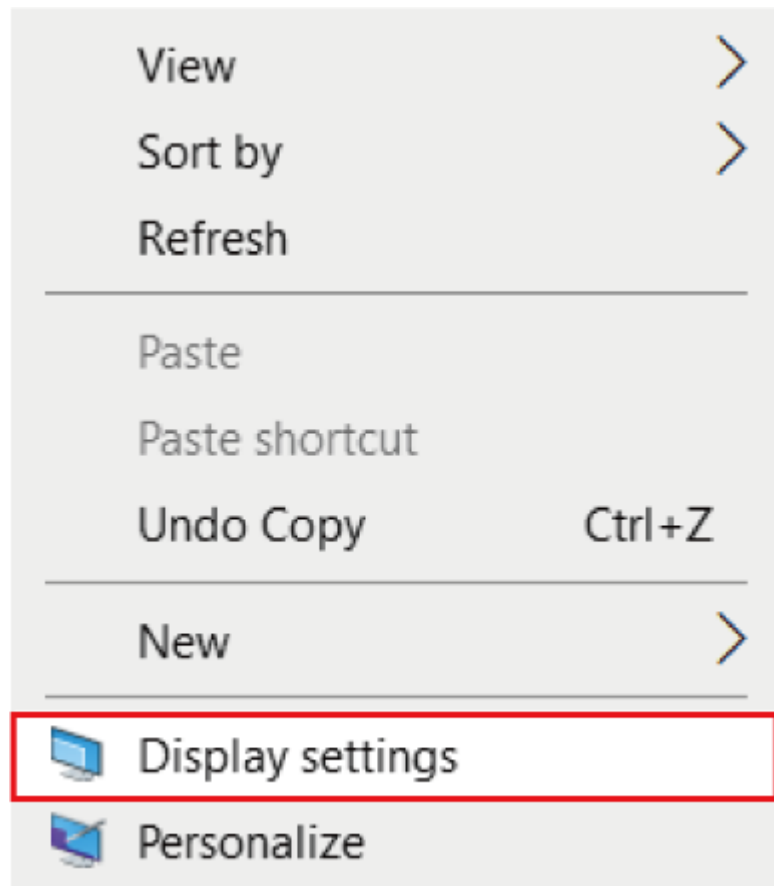
- [For Windows OS](#)
- [For Mac OS](#)
- [For Mac OS X13](#)

Display Mode Settings

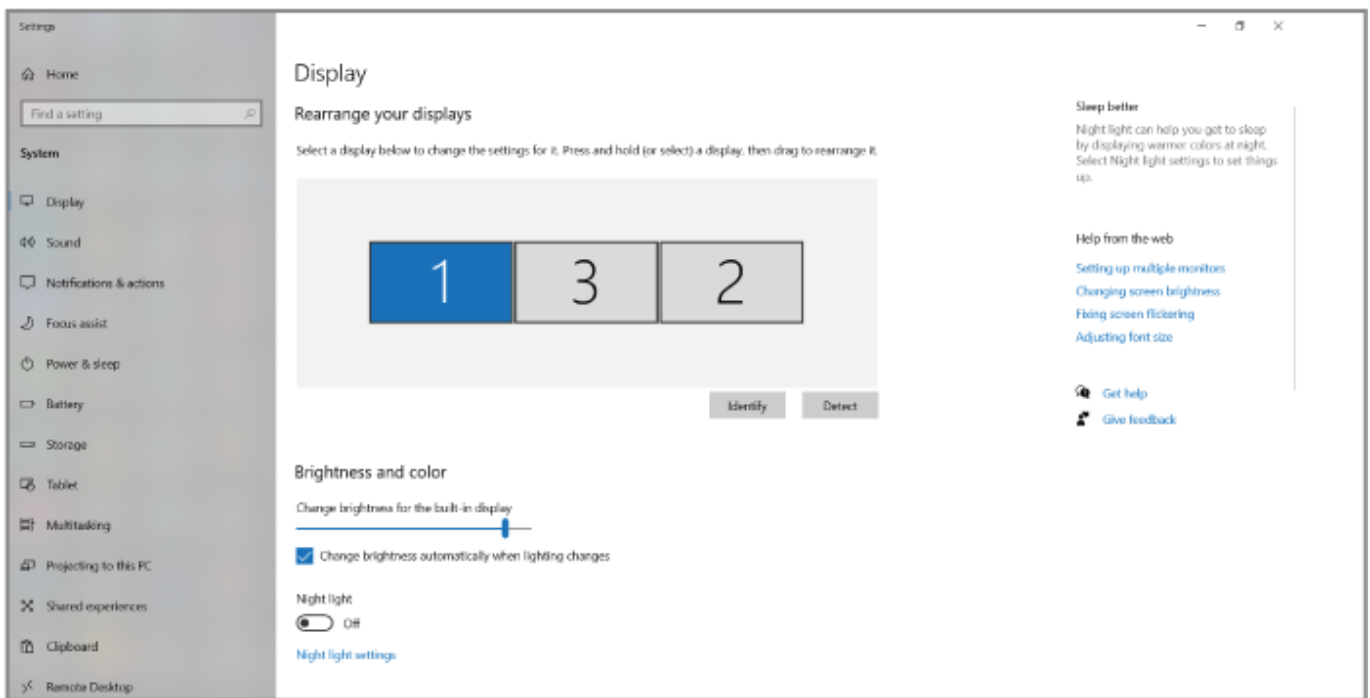
Before configuring the settings, please make sure this docking station has been connected to your laptop and monitors correctly.

For Windows

1. Right-click and select **Display settings**.

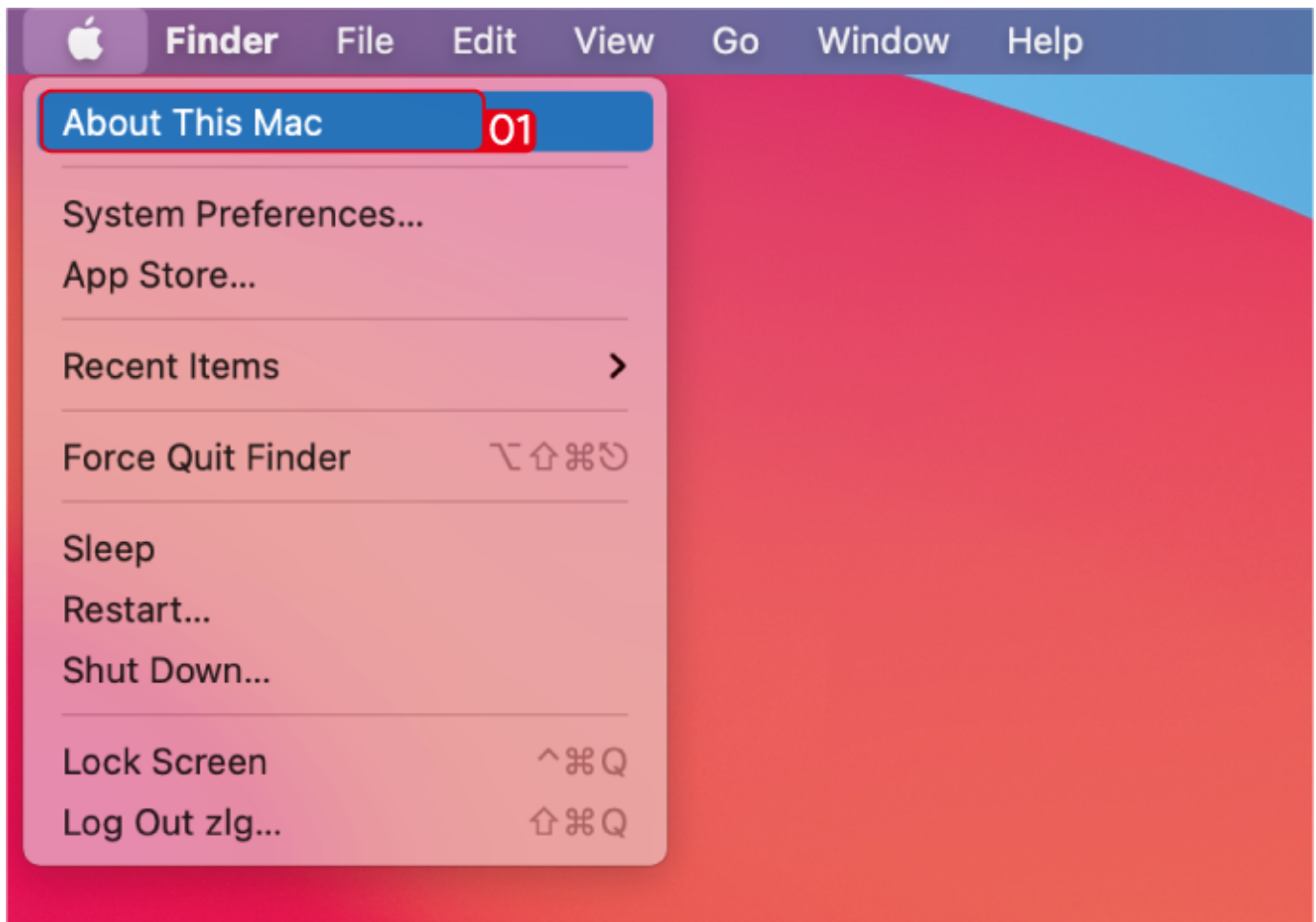


2. In **Display**, you can enjoy different operations of duplicating, extending and rotating on your monitors.

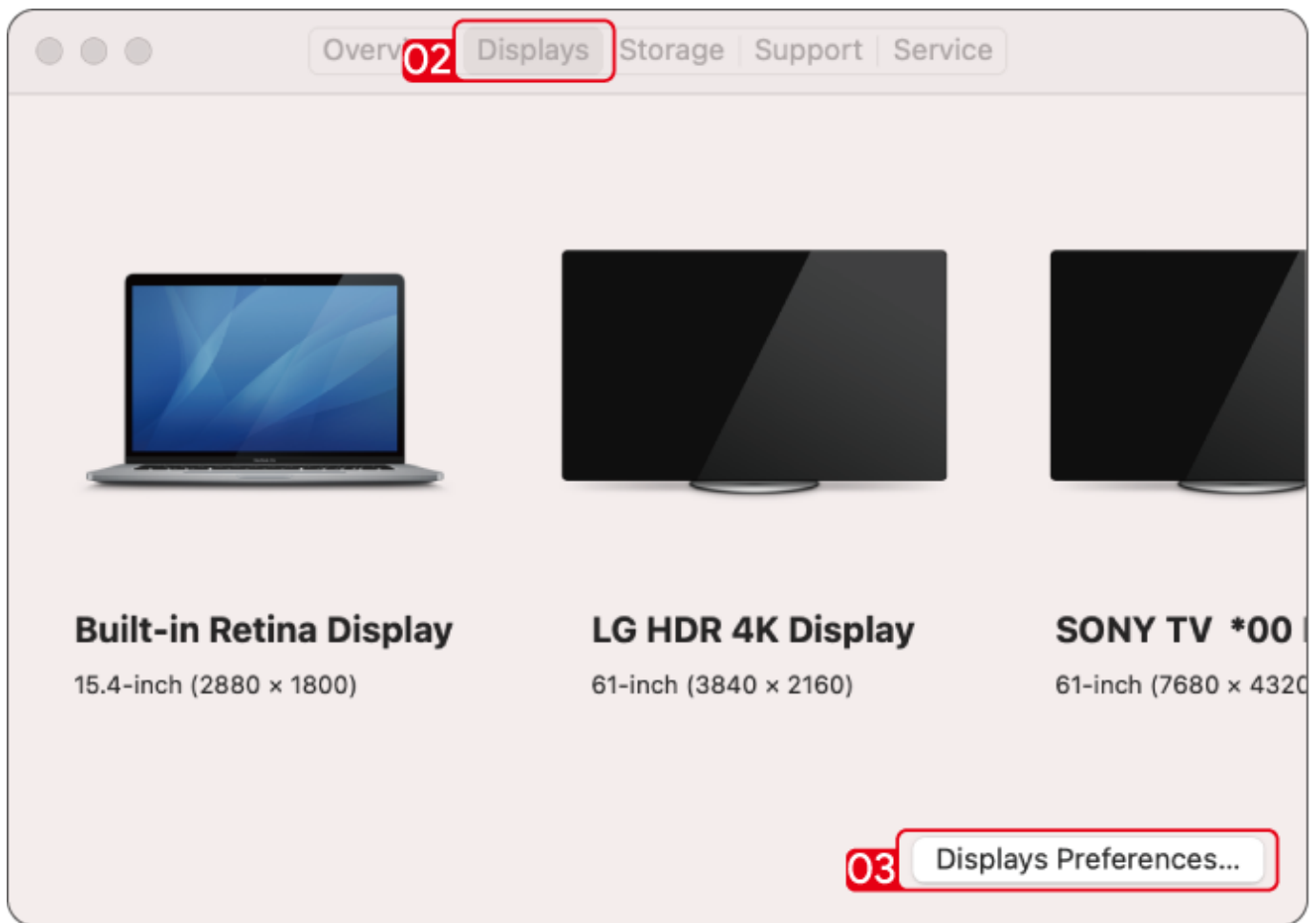


For Mac OS

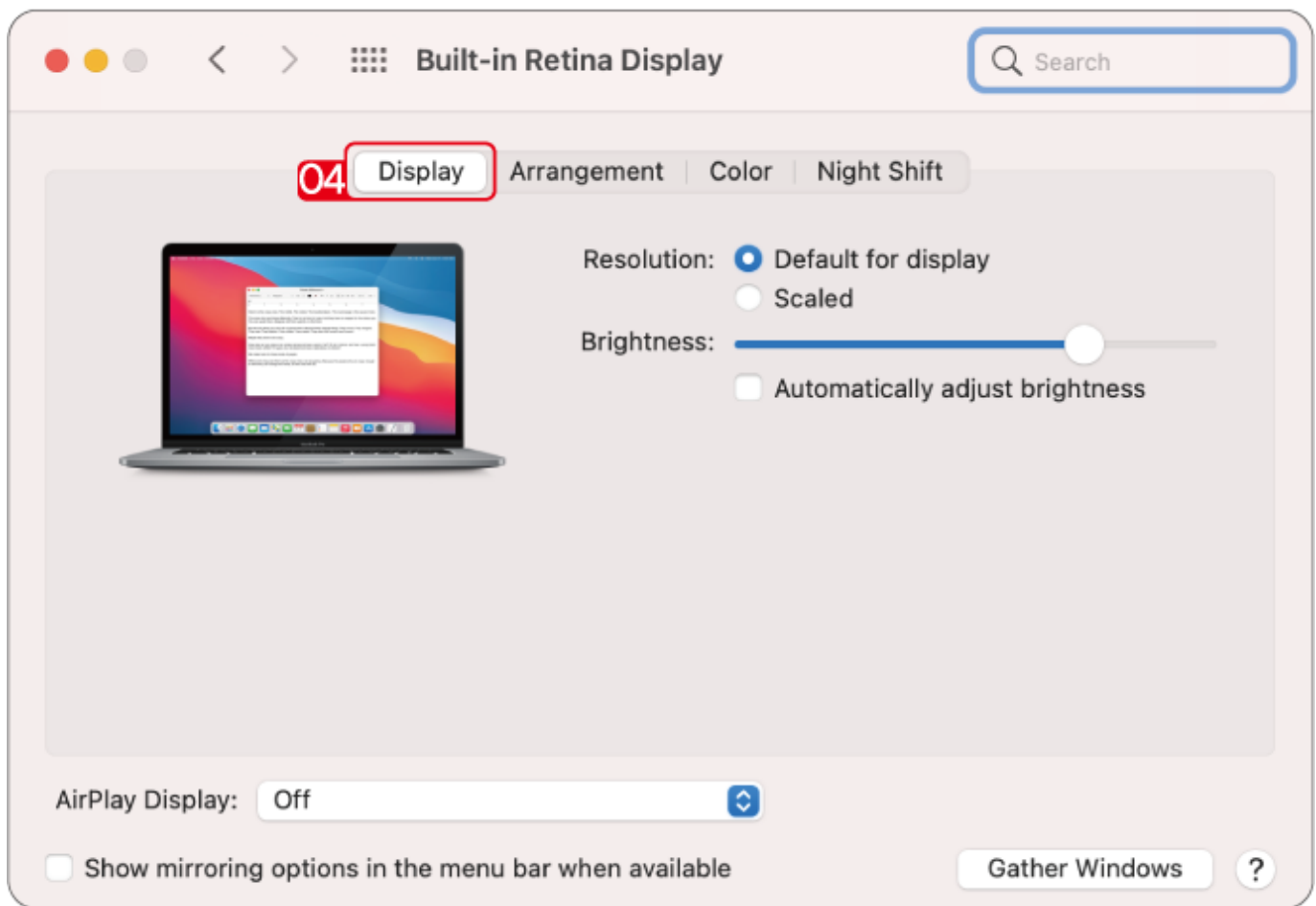
1. Click **Apple** icon, then select **About This Mac**.



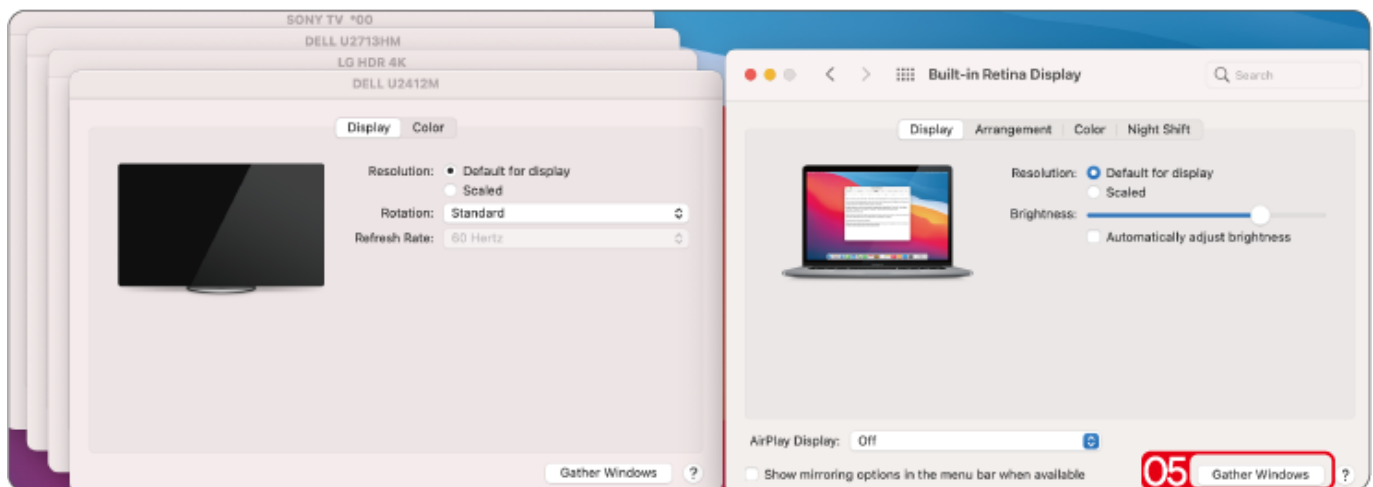
2. Click **Displays**, then select **Displays Preferences**.



3. Select **Displays** from the list, then you can enjoy different operations of mirroring, expanding and rotating on your monitors.

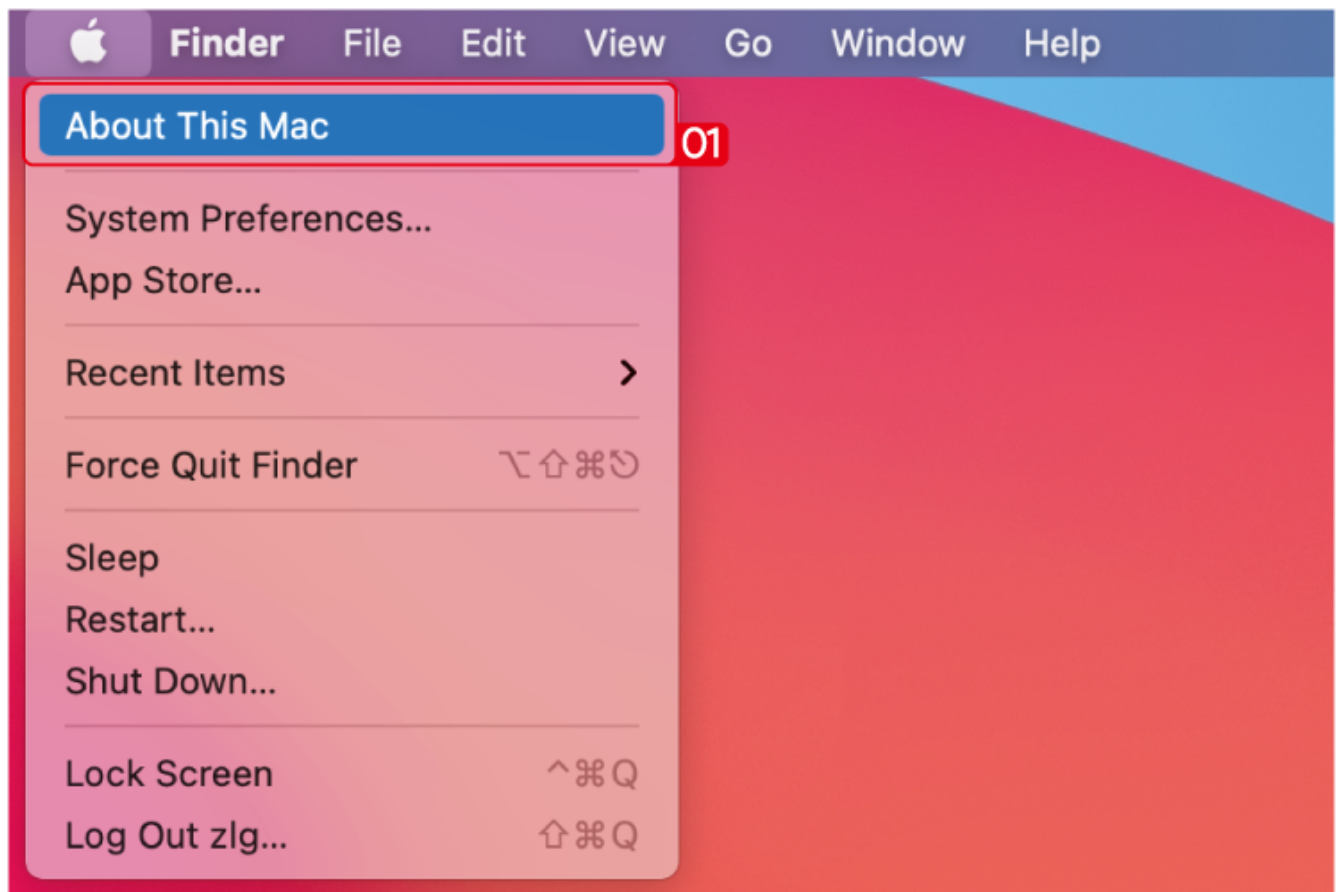


4. Or click **Gather Windows** to gather all connected displays and make separate settings.



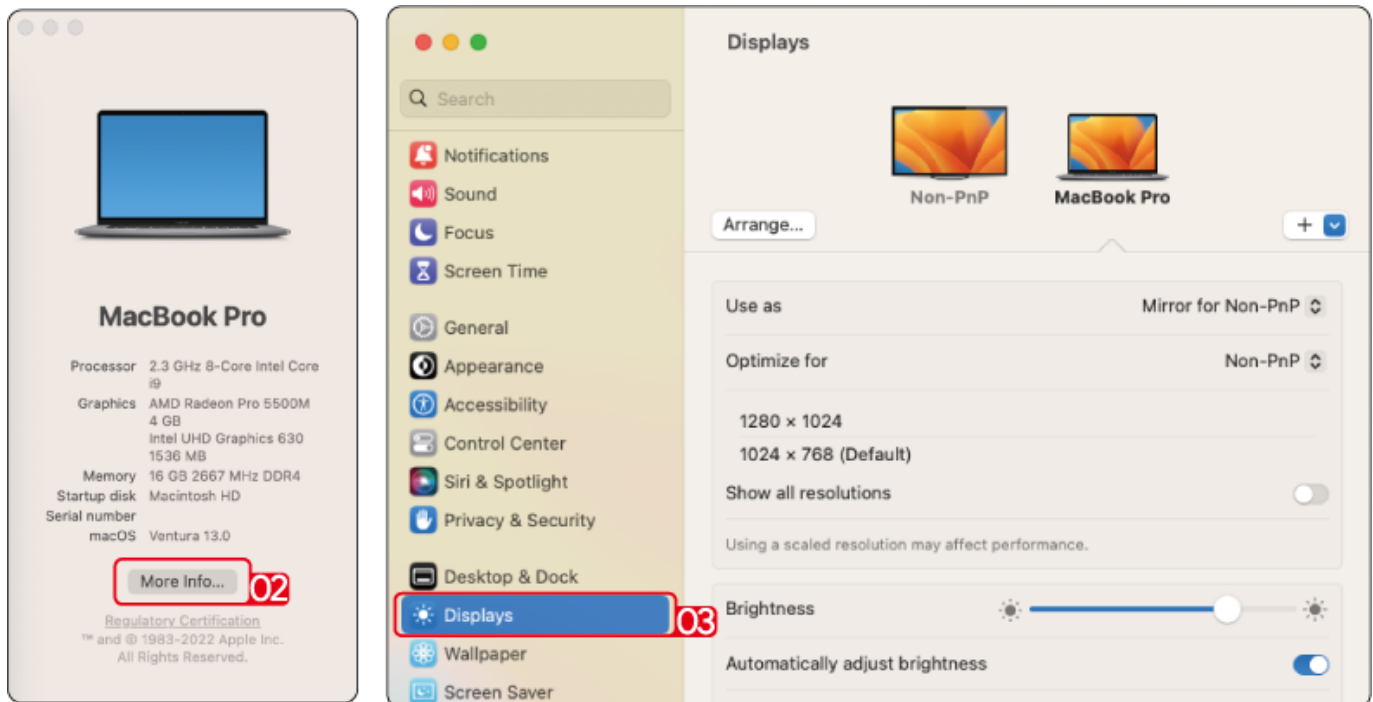
For Mac OS X13

1. Click **Apple** icon, then select **About This Mac**.



2. Click **More Info....**

3. Select **Displays** from the list, then you can enjoy different operations of mirroring, expanding and rotating on your monitors.



Chapter 5 FAQ and After-sale Service

This chapter contains the following sections :

- [FAQ](#)
- [After-sale Service](#)

FAQ

Q1. Why when I install the app for my Macbook, the App wants to record my screen?

A1. Mac OS requires the user to permit **Screen Recording** for DisplayLink driver to work properly. But the DisplayLink Manager will not send any information to the WAVLINK and the DisplayLink/Synaptics. Please do not worry about that.

Q2. Why the apple tv, hulu, netflix could not play when the docking is connected?

A2. The docking could not support hdcp, the protected content such as apple tv, hulu, netflix could not play when the docking is connected. And it is as expected. Please disconnect the docking when you are playing these video. Or you could also try to use the Chrome browser to watch these video and disable the **Hardware Acceleration**.

After-sale Service

Need help?

We're here for you!



Online support: [wavlink.com](https://www.wavlink.com)

Available Mon-Fri 8:30 am-5:30pm (UTC+8)



support@wavlink.com

Available Mon-Fri 8:30 am-5:30pm (UTC+8)



+1 8889730883

Mon-Fri 9:00 am - 10:00 pm (UTC-5)

www.wavlink.com



**Thank you for purchasing
WAVLINK product!**

