

WAVLINK



see the world

USB-C/USB-A to HDMI 4K Display Adapter

Model: WL-UG7607H-A

@WavlinkOfficial

@WavlinkTechSupport

Table of contents:

- About This Guide
 - Conventions
 - More Info
 - Performance Disclaimer
- Chapter 1 Product Overview
 - Introduction
 - Feature
 - System Requirement
 - In the Box
 - Overview
 - Connection
- Chapter 2 Driver Installation and Display Mode Setting
 - Display Resolution
 - Driver Installation
 - For Windows
 - For macOS
 - Display Mode Setting
 - For Windows Users
 - For Mac User
- Chapter 3 FAQ and Aftersale Service
 - FAQ
 - Q1. Why does the App want to record my screen when I install the App for my Macbook?
 - Q2. Why can't the Apple TV, Hulu, and Netflix play when the Universal Display Adapter is connected?
 - Aftersale Service

About This Guide

This guide serves as a companion to the Quick Installation Guide for your wired USB product. The Quick Installation Guide provides essential steps for immediate setup, while this document offers detailed explanations of product features and advanced configuration options.

Please note that product functionality may vary slightly depending on your specific model, software version, geographic region, language, and connected devices. Screenshots, parameters, and descriptions in this guide are for illustrative purposes only.

Conventions

In this guide the following conventions are used :

Convention	Description
<u>Underlined</u>	Underlined words or phrases are hyperlinks. You can click to redirect to a website or a specific section.
Teal	The content and text that needs to be emphasized on the web page is the theme color #1D428A , including menus, items, buttons, etc.
Note:	Critical reminders to prevent operational errors or functionality issues.
Tips:	Best practices or optimization suggestions for enhanced performance.

More Info

The latest driver, firmware and utilities are available from the Download Center at [WAVLINK SUPPORT](#) .

Included in your product packaging or available digitally via the link above.

If you encounter any issues, please don't hesitate to email contact@wavlink.com / techsupport@wavlink.com / postsales@wavlink.com to provide feedbacks or contact online customer service, thank you !

Performance Disclaimer

The maximum transfer speeds stated for this product are based on theoretical limits of USB specifications (e.g., USB 2.0/3.0/3.1 Gen 1/Gen 2). Actual performance may vary due to:

Device limitations: Host system performance, driver compatibility, and connected device capabilities.

Environmental factors: USB cable quality, length, electromagnetic interference, and port power delivery.

Network/software conditions: Operating system overhead, background processes, and concurrent data transfers.

Wired connections are generally more stable than wireless alternatives, but performance is not guaranteed and depends on the factors listed above.

Chapter 1 Product Overview

This chapter introduces the adapter's features, system requirements, and appearance. It contains the following sections:

- [Introduction](#)
- [Feature](#)
- [System Requirement](#)
- [In the Box](#)
- [Overview](#)
- [Connection](#)

Introduction

This USB-C/USB-A to HDMI 4K display adapter can extend or mirror your screen up to 4K@ 30Hz, making it ideal for stock business analysis, video editing, and office tasks. The vibrant resolution enhances the visual experience and brings added enjoyment to your work.

Feature

- Supports a quad display setup, with two capable of delivering 4K@30Hz resolution.
- 1 x USB-C/USB-A connector supports 5Gbps data transmission.
- Supports extend and mirror modes.
- Ideal choice for stocking business analysis, office work, and video clipping.
- Compact size to carry.
- This good-quality, super design, and user-friendly adapter can be your good companion while working.

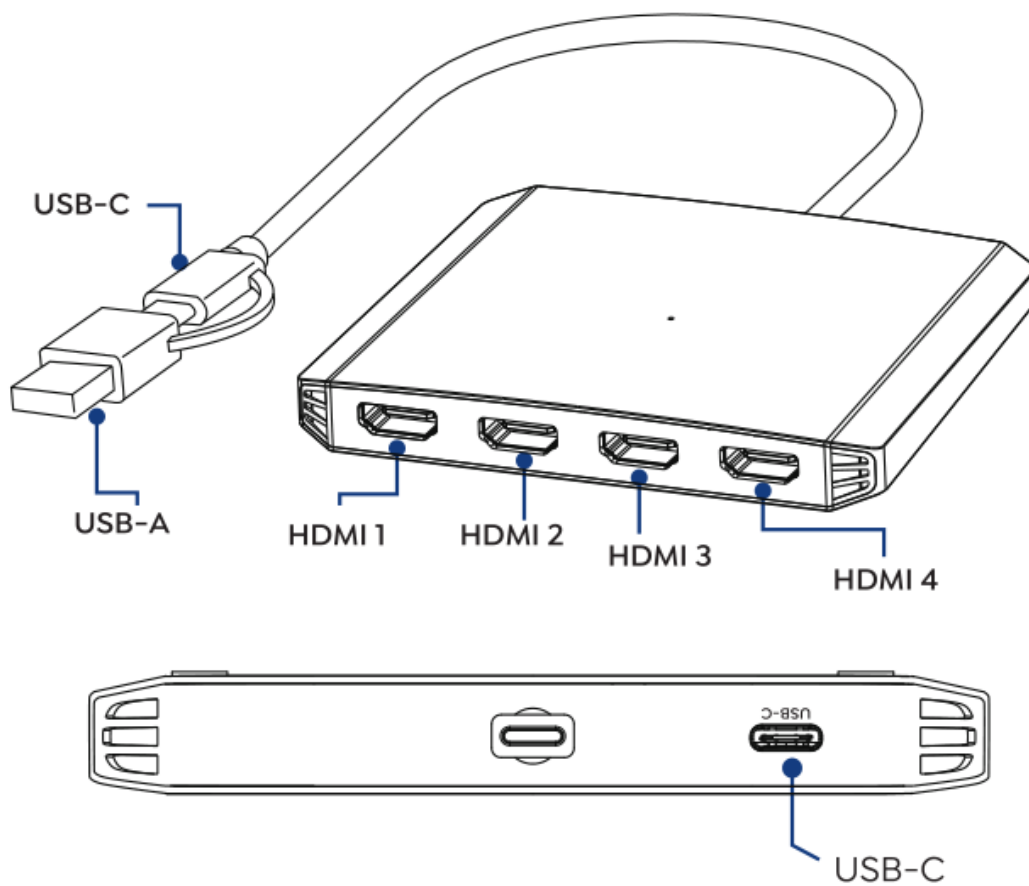
System Requirement

- Windows 8.1 / 10 / 11
- macOS 14 / 13 / 12 / 11
- macOS 10.12 - 10.15

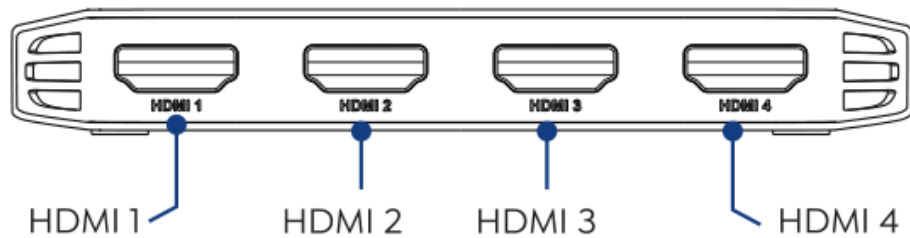
In the Box

- 1 x USB-C/USB-A to HDMI 4K Display Adapter
- 1 x USB-C to USB-A Cable
- 1 x Quick Start Guide

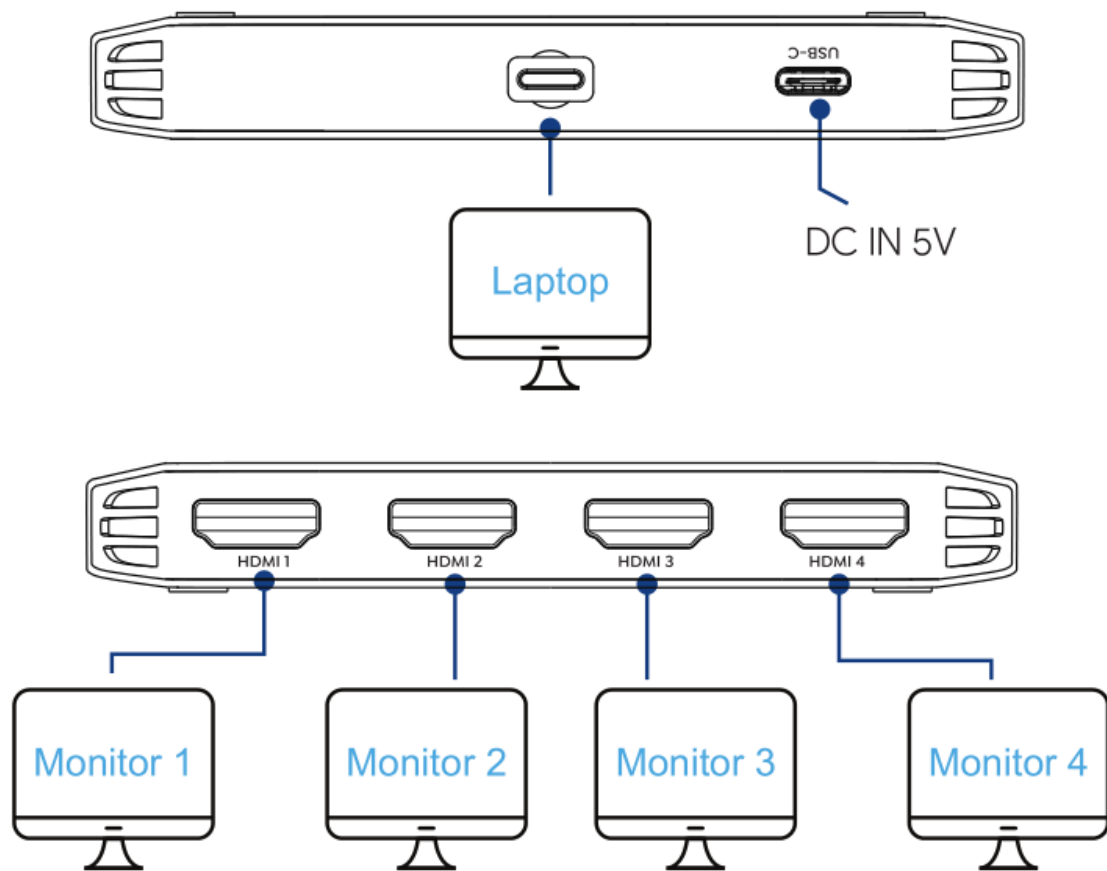
Overview



Note: USB-C Port provides 5V IN charging only.



Connection



Chapter 2 Driver Installation and Display Mode Setting

This chapter introduces the display resolution, driver installation, and display mode setting.

It contains the following sections:

- [Display Resolution](#)
- [Driver Installation](#)
- [Display Mode Setting](#)

Display Resolution

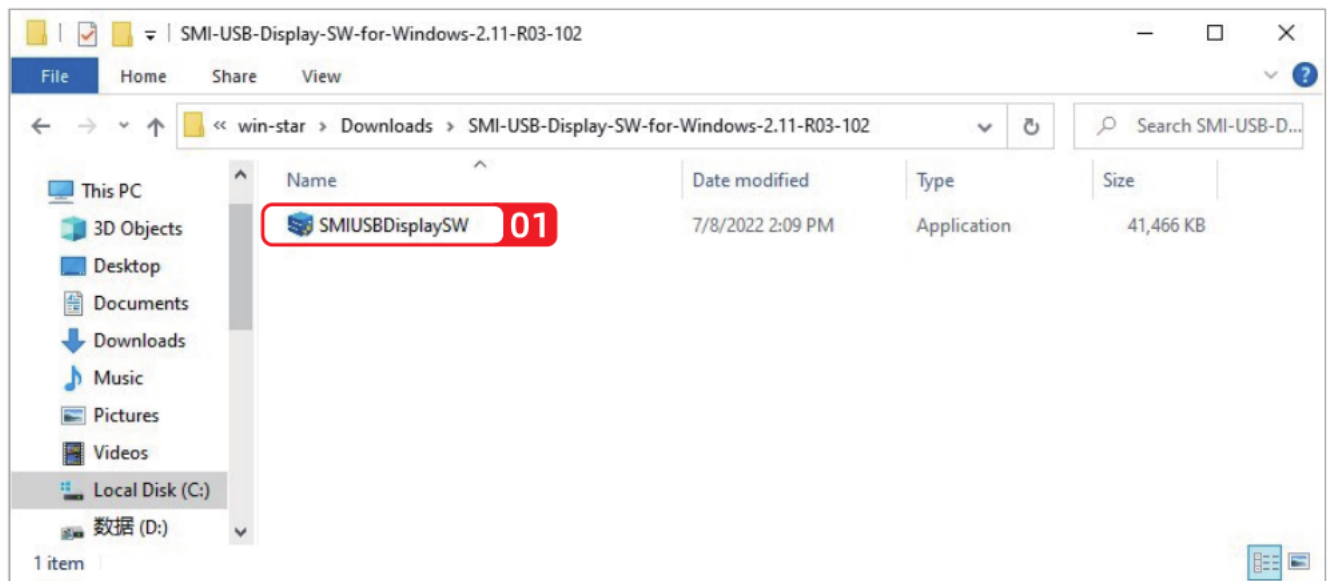
Scenarios	Systems	Connected with DP1.4 & DSC1.2 / DP1.4 (no DSC1.2) / DP1.2 Computer
Single Display	Windows	HDMI1:1920x1080@60Hz HDMI2:3840x2160@30Hz HDMI3:1920x1080@60Hz HDMI4:3840x2160@30Hz
	<u>macOS</u>	HDMI1:1920x1080@60Hz HDMI2:3840x2160@30Hz HDMI3:1920x1080@60Hz HDMI4:3840x2160@30Hz
Dual/Triple/ Quad Display	Windows	HDMI1:1920x1080@60Hz HDMI2:3840x2160@30Hz HDMI3:1920x1080@60Hz HDMI4:3840x2160@30Hz
	<u>macOS</u> Mirror	HDMI1:1920x1080@60Hz HDMI2:3840x2160@30Hz HDMI3:1920x1080@60Hz HDMI4:3840x2160@30Hz

Driver Installation

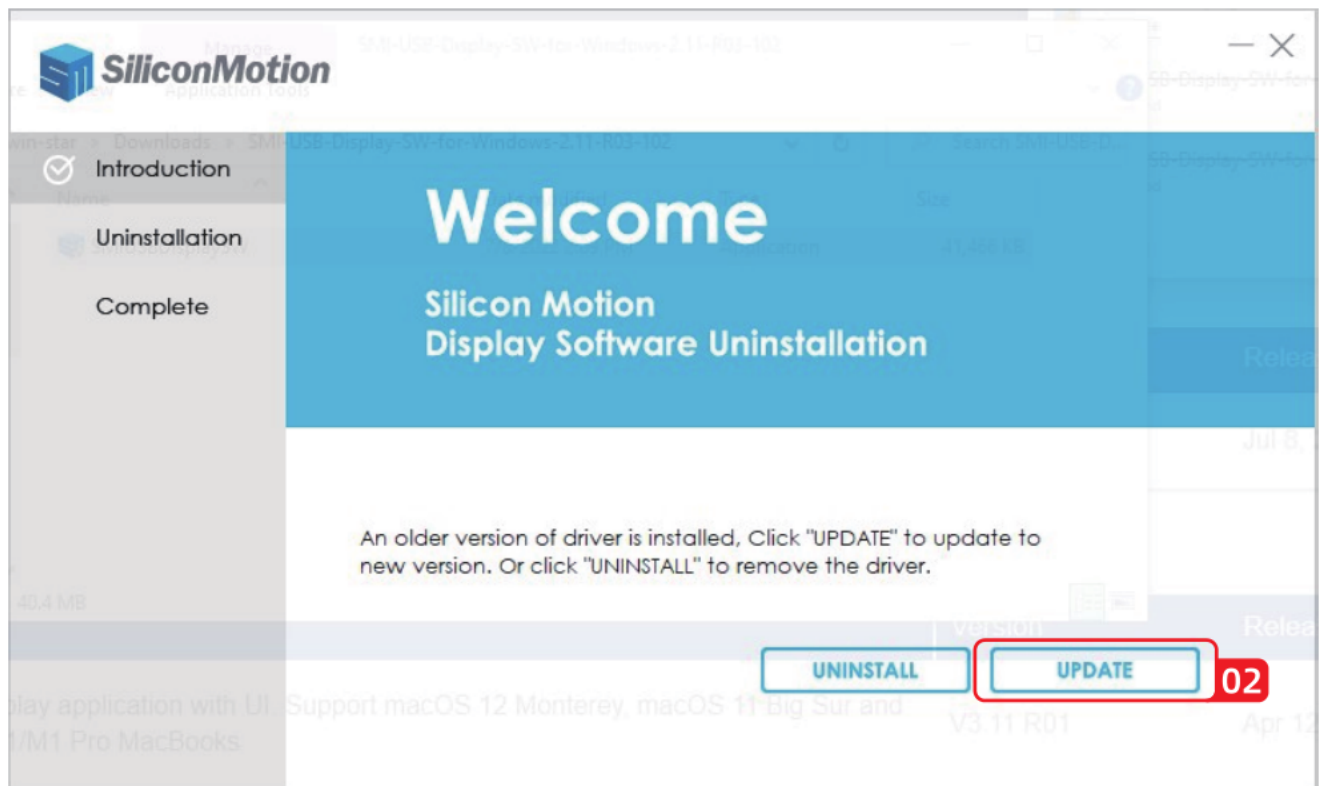
Before using this adapter, please make sure the latest PC/laptop driver has been installed. If driver can not be installed automatically, please visit www.wavlink.com/en-us/WL-UG7607H-A or enter www.wavlink.com and click **SUPPORT> Driver >WL-UG7607H-A** to find and install it.

For Windows

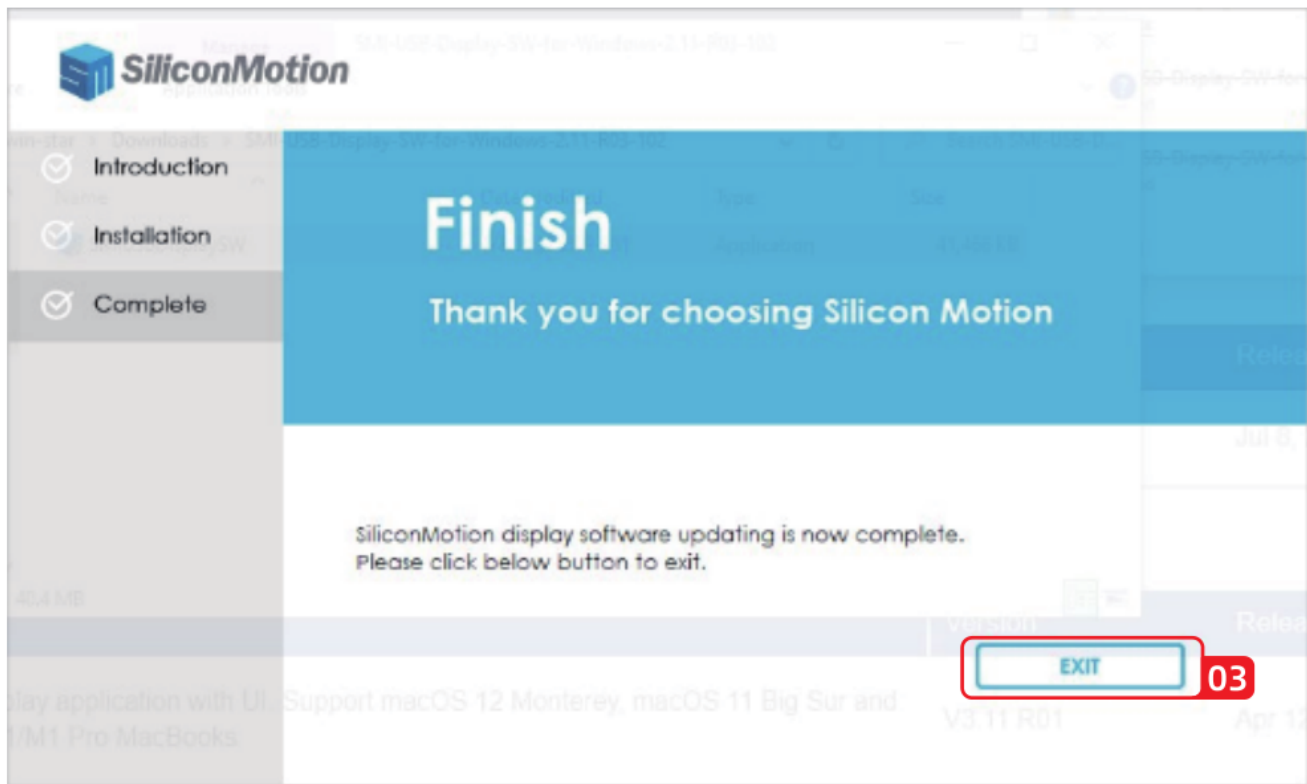
1. After extracting the file downloaded, click SMIUSBDisplaySW(.exe)in the extracted file.



2. Click **UPDATE**.



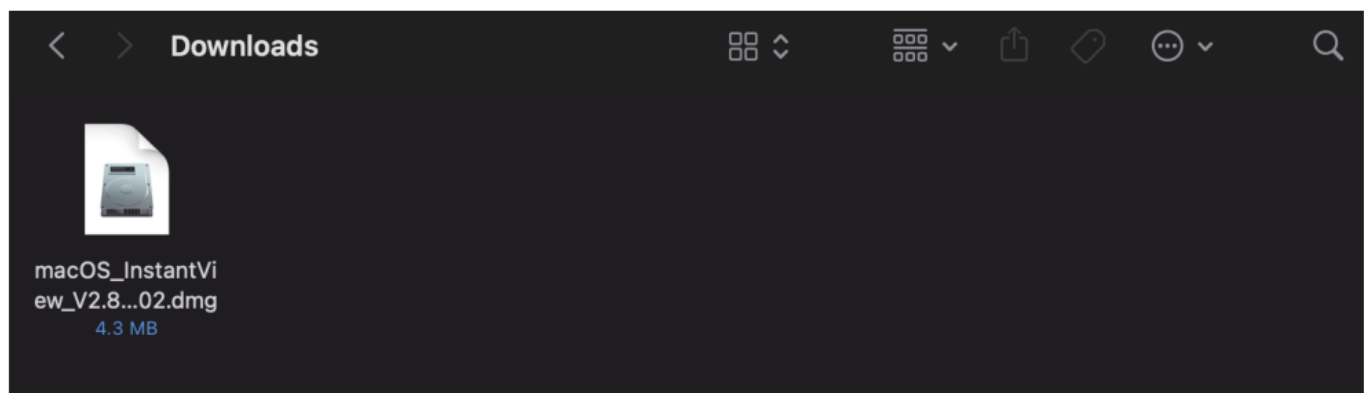
3. Click **EXIT** to finish the installation process.



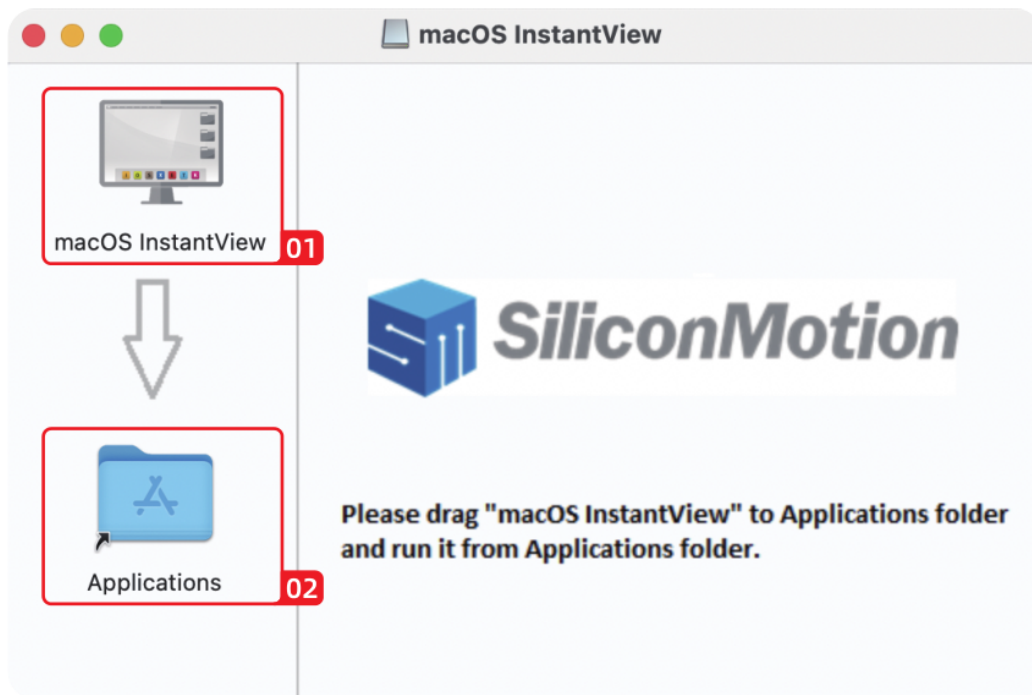
For macOS

Download the Silicone Motion InstantView application for macOS found here:
www.wavlink.com/en_us/WL-UG7607H-A to find and manually install it.

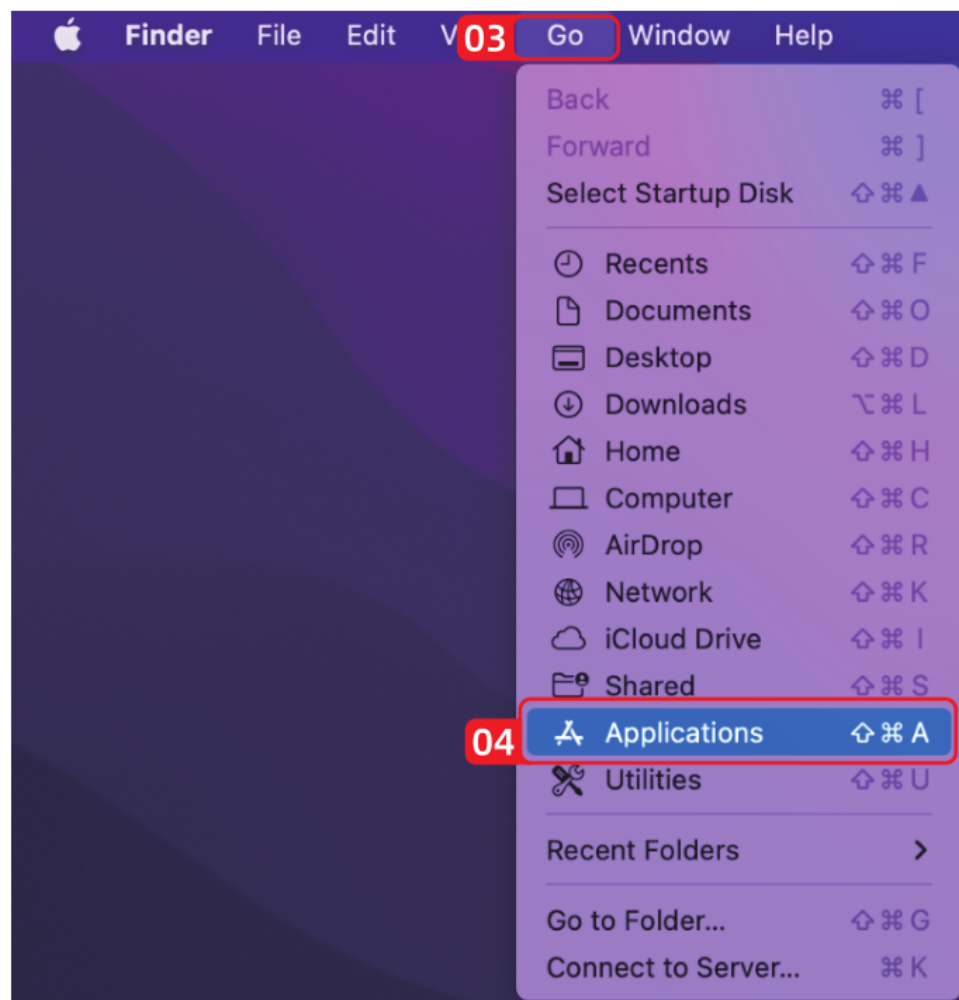
1. Double click on the file you downloaded to start the application installer.

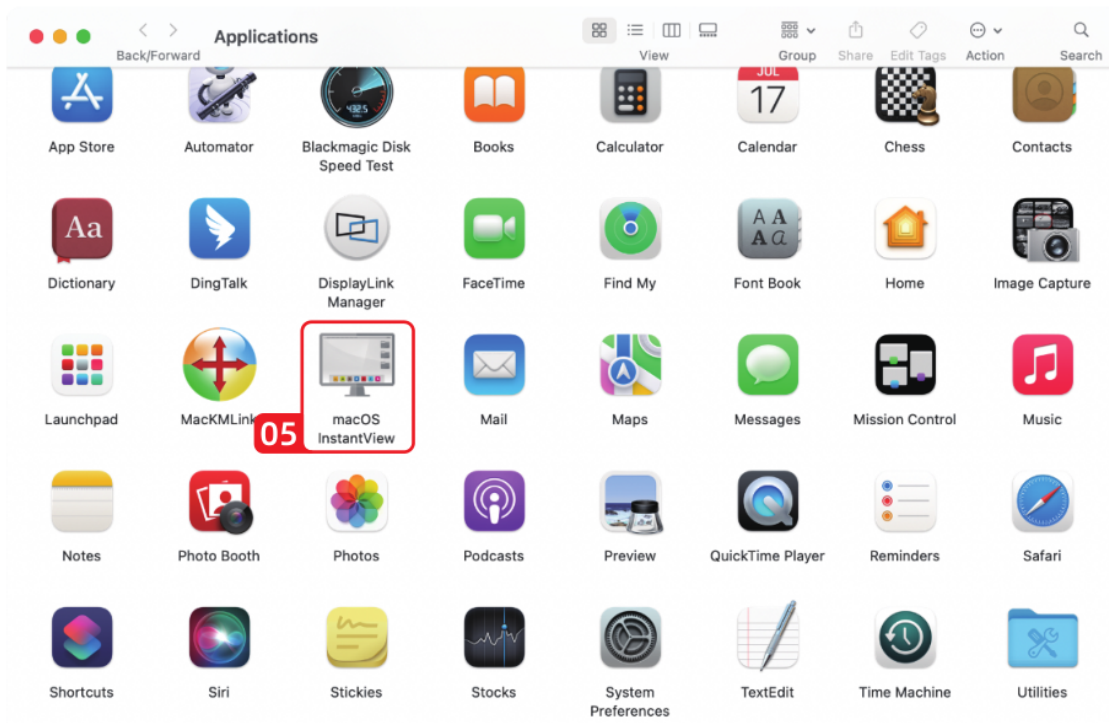


2. Drag the **macOS InstantView** application icon into the **applications** folder in the open window.

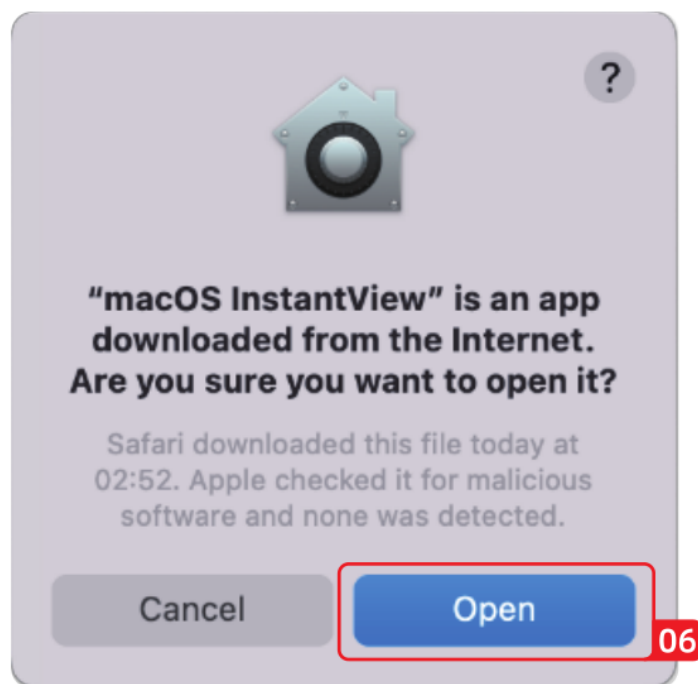


3. Navigate to your launchpad or applications folder to find the **macOS InstantView** and double click to launch it.

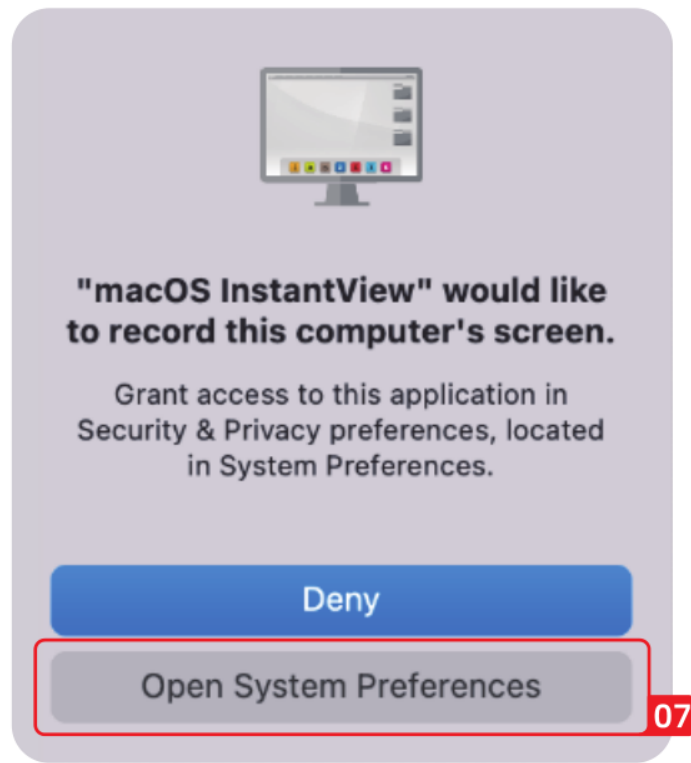




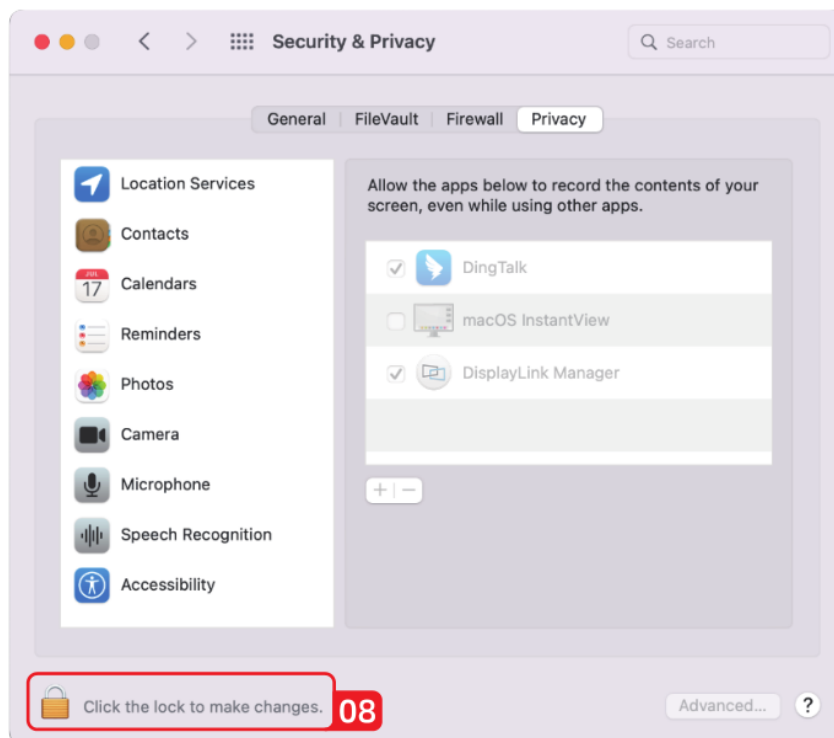
4. Click **Open**.



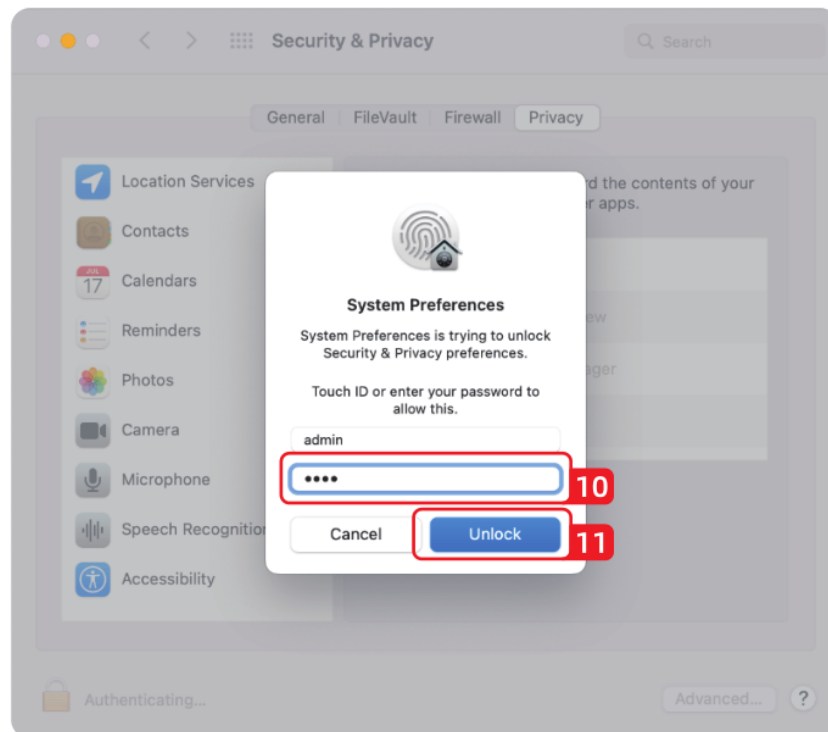
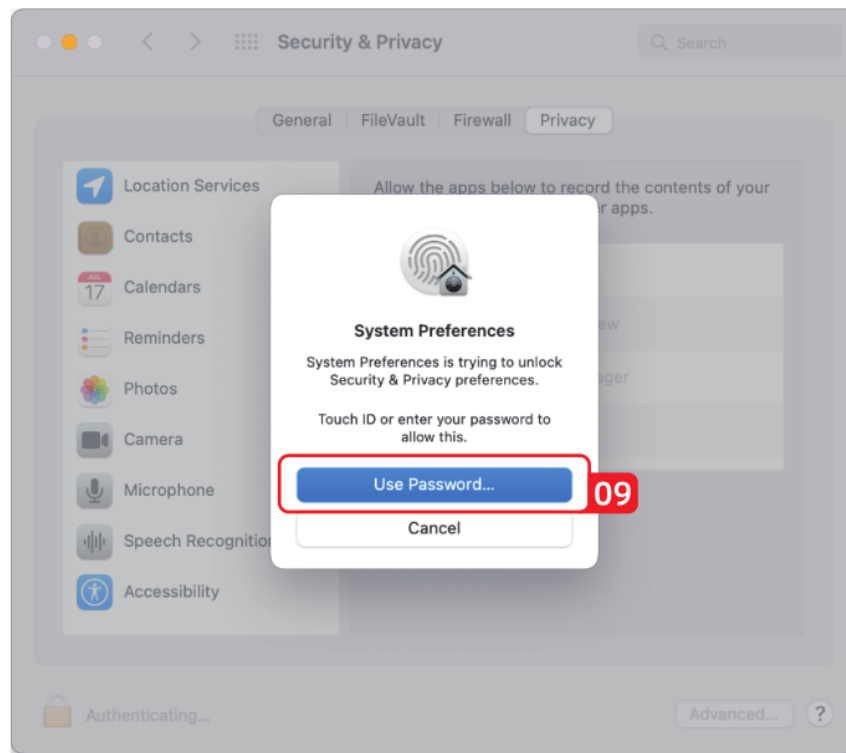
5. Click **Open System Preferences**. (Note: this should automatically open the **Security and Privacy** section, but if it does not, you can manually open the **Security and Privacy settings**.)



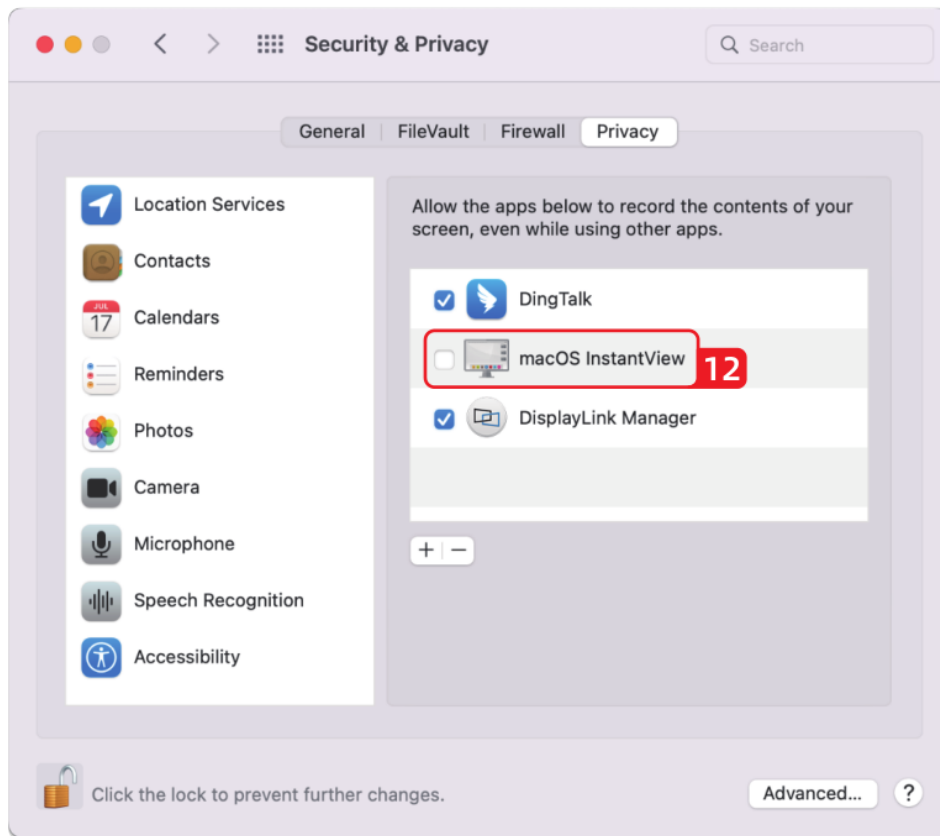
6. Click on the gold pad lock on the bottom of the application window to enable changes.



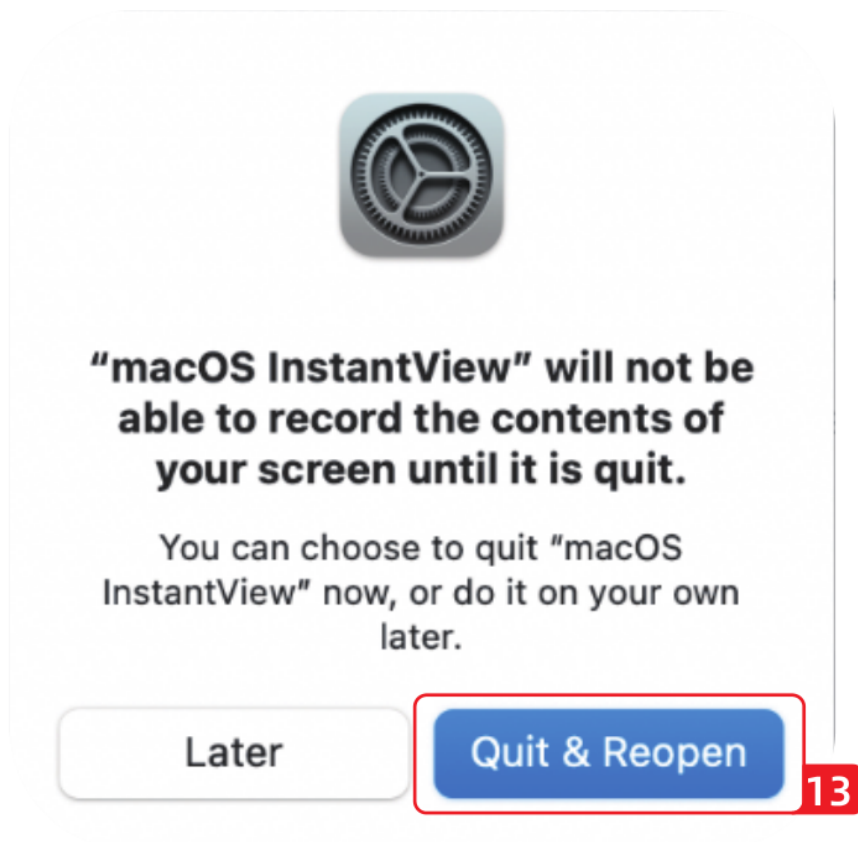
7. If prompted, enter your password and click the **Unlock** button.



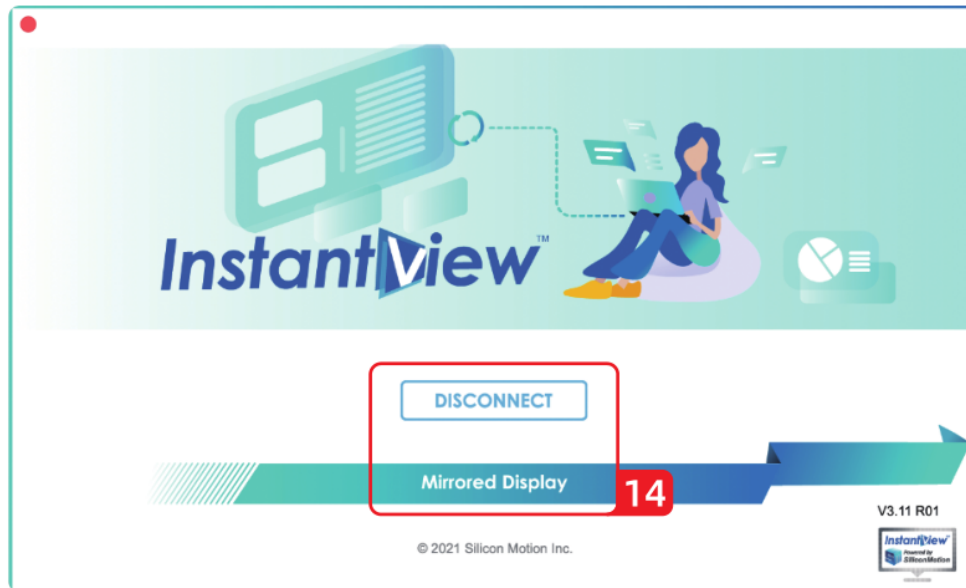
8. Click to and place a check mark next to the macOS InstantView entry.



9. You will be prompted to **Quit and Reopen** the InstantView application in order for the change take effect. So please do so:



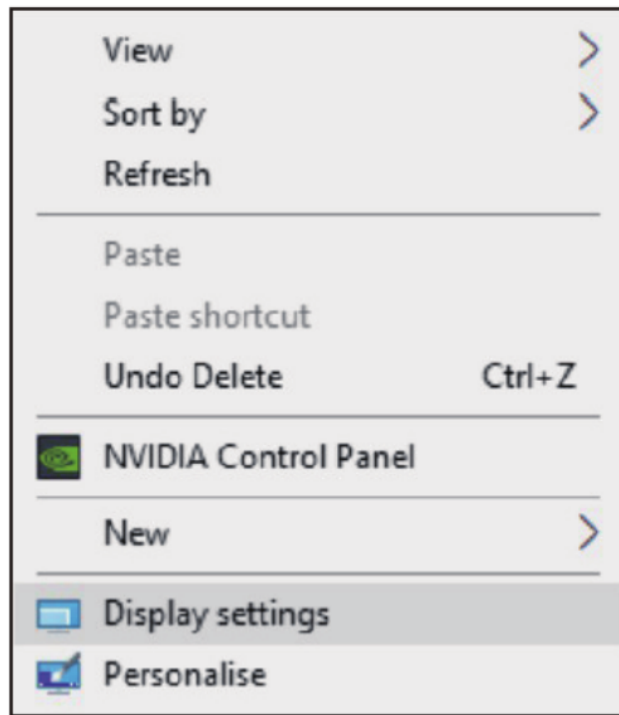
10. The software has now been installed and you may connect your graphics adapter or docking station.
11. When the computer is connected to the docking station for the first time, the following window will appear after the driver is started. You can choose to disconnect or mirror the screen according to your personal usage. In addition, you can also close this window and go to the system settings to set the screen.



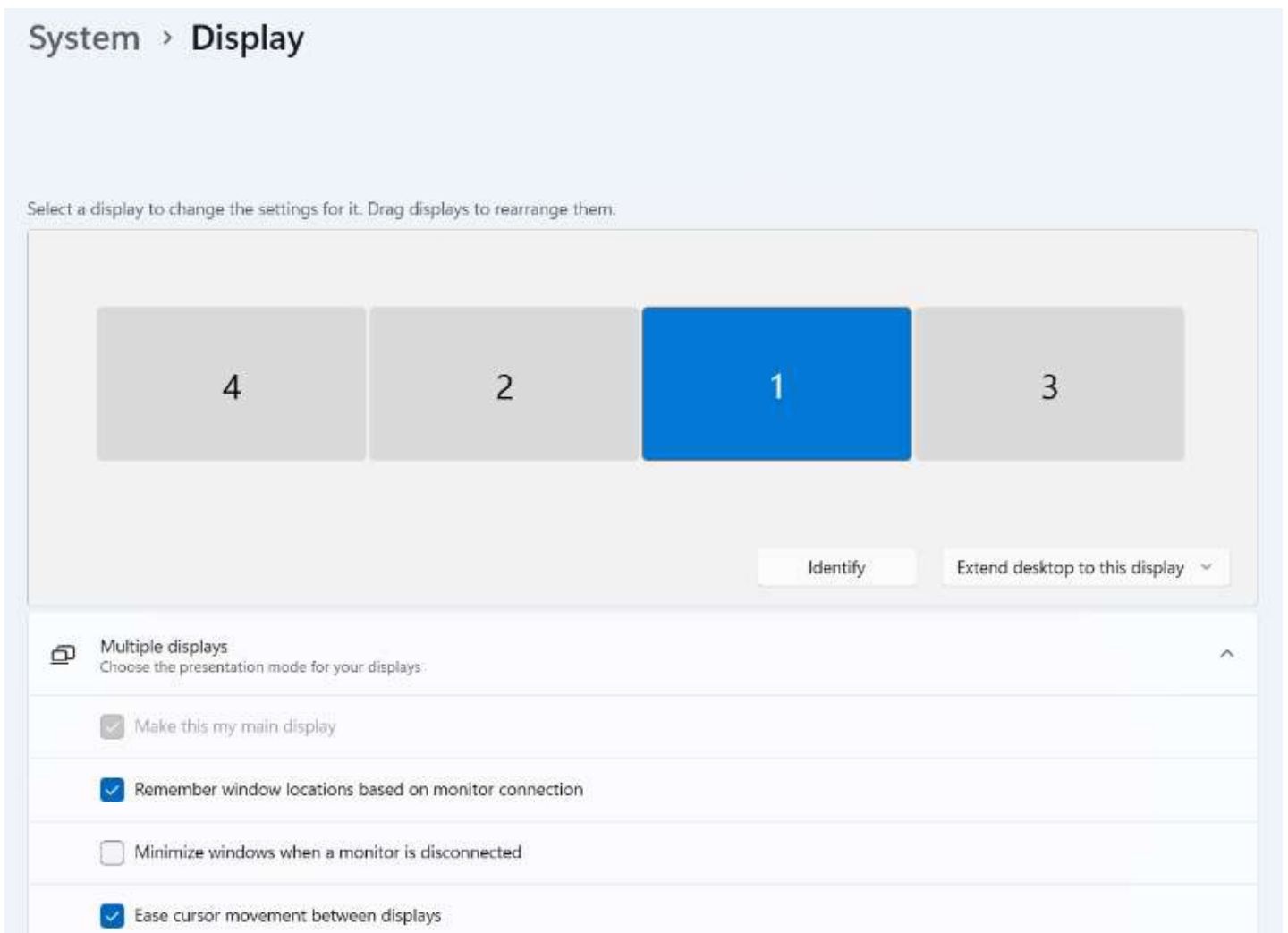
Display Mode Setting

For Windows Users

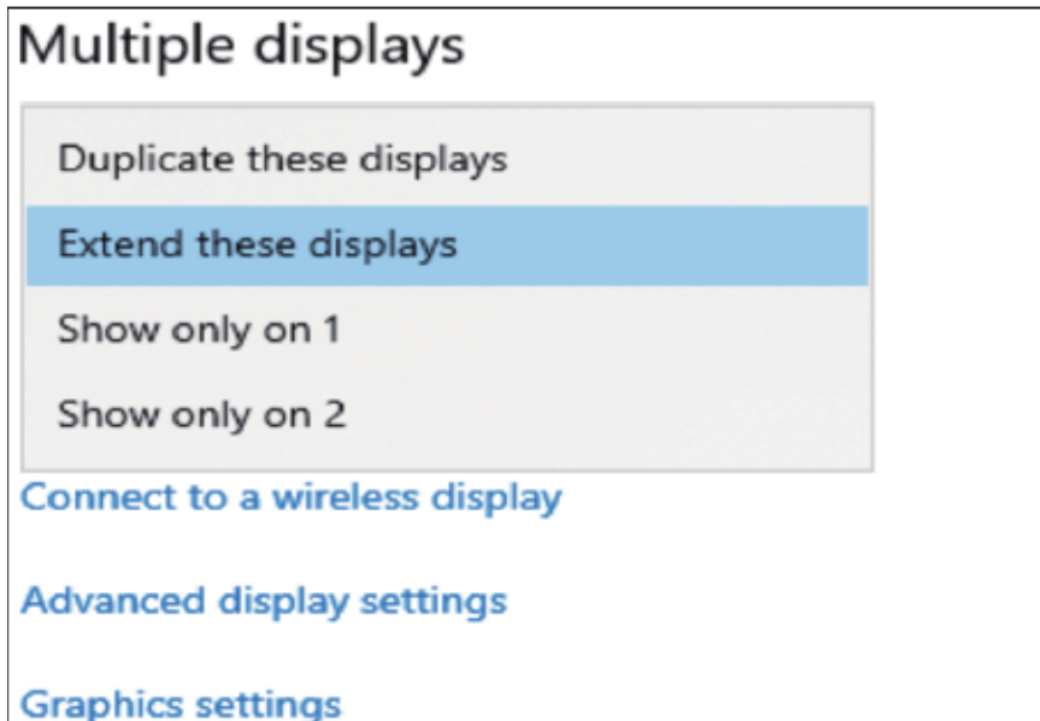
1. Right click on any spot on your desktop and choose "**Display Setting**".



2. In section "**Display**", please select either monitor 1, monitor 2, monitor 3, or monitor 4.

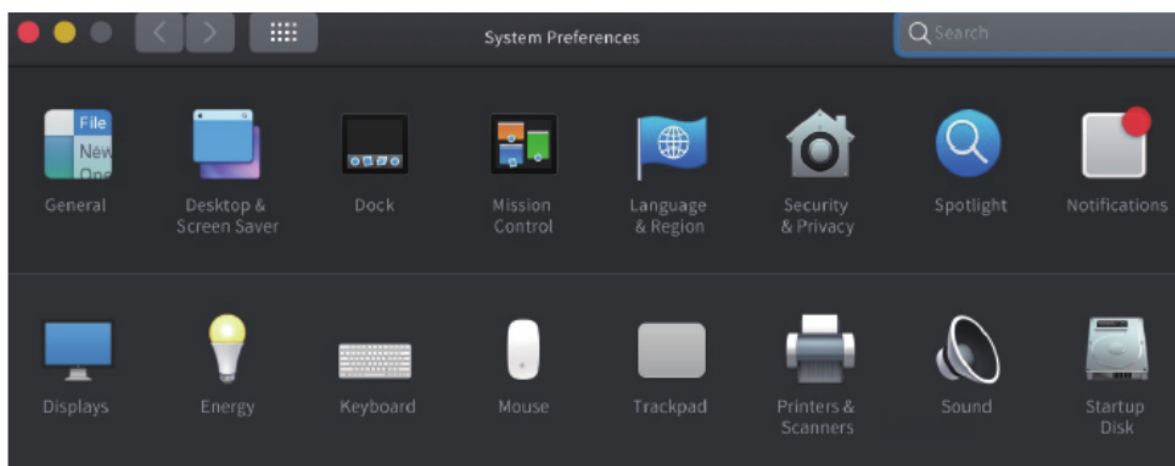


3. Scroll down to the "**multiple displays**", and select the mode in the drop-down list that fits your needs.

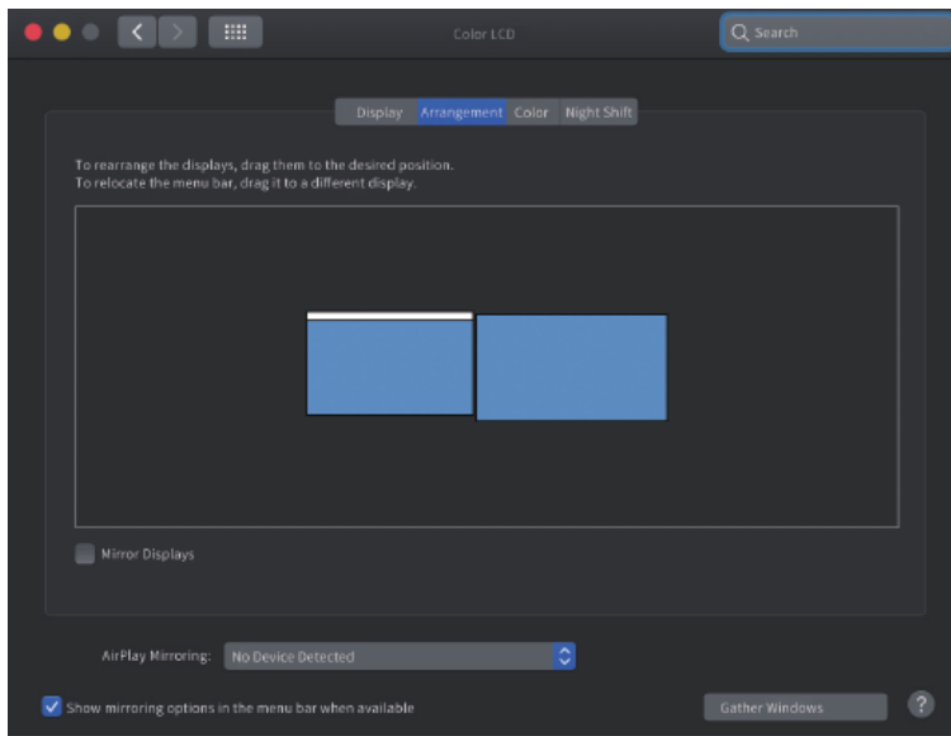


For Mac User

1. Select "**System Preference**" and choose "**Displays**".

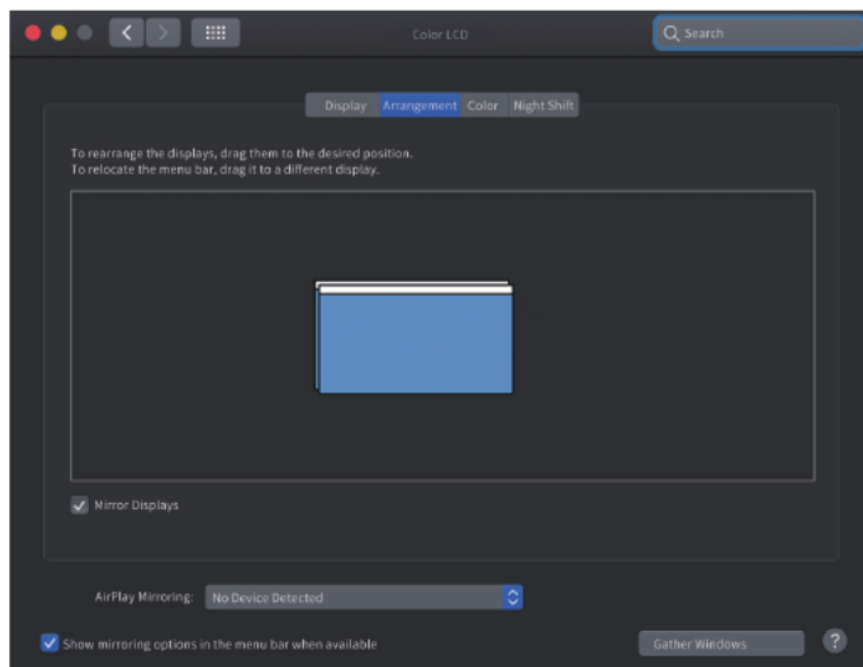


2. Click on "**Arrangement**" to change the position of the displays currently connected.



Extend Mode

3. To use the Mirror mode, you have to mark the "**Mirror Displays**" box below the central icon.



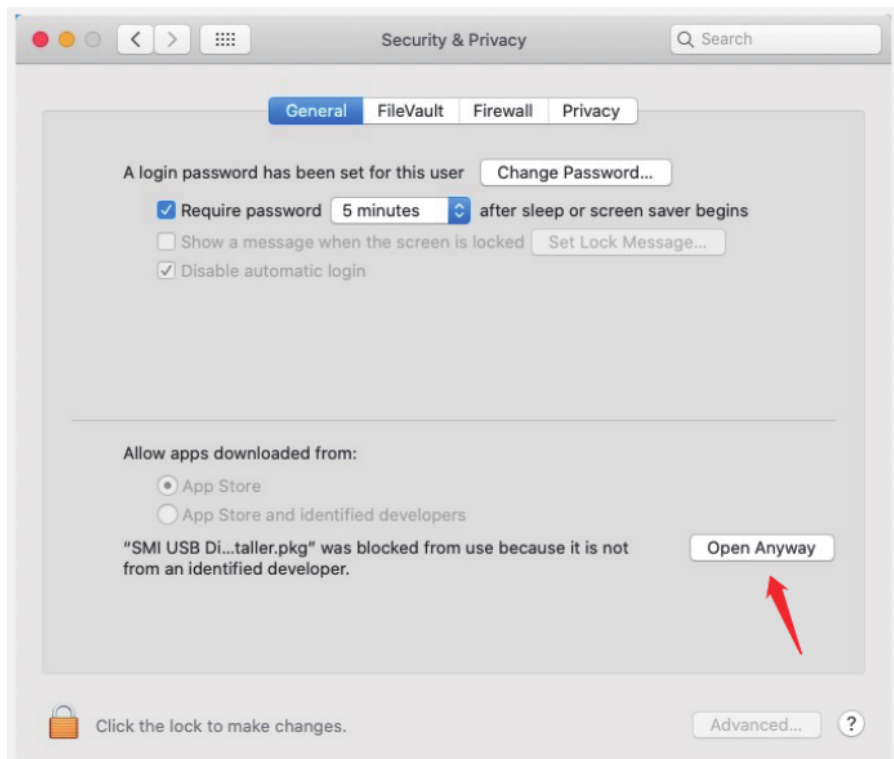
Mirror Mode

NOTICE

Due the privacy policies applied in Mac, you may experience the following issue.



Select "**System Preference**" and choose "**Security and Privacy**", click on "**Open Anyway**" to approve the driver installation.



Chapter 3 FAQ and Aftersale Service

This chapter introduces FAQ and Afteresale Service.

It contains the following sections:

- [FAQ](#)
- [Aftersale Service](#)

FAQ

Q1.Why does the App want to record my screen when I install the App for my Macbook?

A1. macOS requires users to permit "**Screen Recording**" for the DisplayLink driver to work properly. But the DisplayLink Manager will not send any information to the Wavlink and the Displaylink/Synaptics. Please do not worry about that.

Q2. Why can't the Apple TV, Hulu, and Netflix play when the Universal Display Adapter is connected?

A2. The Universal Display Adapter could not support HDCP, so protected content such as Apple TV, Hulu, and Netflix can't play when the Universal Display Adapter is connected. Please disconnect it when you are playing these videos. Or you could also try to use the Chrome browser to watch these videos and disable the Hardware Acceleration.

Aftersale Service

Need help?

We're here for you!



Online support: wavlink.com

Available Mon-Fri 8:30 am-5:30pm (UTC+8)



support@wavlink.com

Available Mon-Fri 8:30 am-5:30pm (UTC+8)



+1 8889730883 (US Local)

Mon-Fri 9:00 am - 10:00 pm (UTC-5)

www.wavlink.com



**Thank you for purchasing
WAVLINK product!**