

WAVLINK



see the world

User Manual

Universal 8K/Quintuple 4K Docking Station

Model: WL-UG75PD5-3H2D

@WavlinkOfficial

@WavlinkTechSupprt

Table of contents:

- About This Guide
 - Conventions
 - More Info
 - Speed/Coverage Disclaimer
 - Safety Instructions
 - Copyright Statement
 - WEEE Directive & Product Disposal
- Chapter 1 Product Basic Info
 - Overview
 - Specification
 - System Requirement
 - In the Box
- Chapter 2 Driver Installation
 - Driver Installation
 - For Windows
 - For Mac
- Chapter 3 How to Connect
 - How to Connect
 - Display Resolution
- Chapter 4 Display Mode Setting
 - Display Mode Setting
 - For Windows
 - For Mac X12 or Below
 - For Mac OS X13
- Chapter 5 FAQ
 - FAQ
 - Q1. Why when I install the app for my Macbook, the App want to record my screen?
 - Q2. Why the apple tv, hulu, netflix could not play when the docking is connected?
 - Aftersale Service

About This Guide

This guide is a complement to Quick Installation Guide. The Quick Installation Guide provides instructions for quick internet setup, while this guide contains details of each function and demonstrates how to configure them.

When using this guide, please notice that features of the router may vary slightly depending on the model and software version you have, and on your location, language, and internet service provider. All screenshots, images, parameters and descriptions documented in this guide are used for demonstration only.

Conventions

In this guide the following conventions are used :

Convention	Description
<u>Underlined</u>	Underlined words or phrases are hyperlinks. You can click to redirect to a website or a specific section.
Teal	The content and text that needs to be emphasized on the web page is the theme color #1D428A , including menus, items, buttons, etc.
>	The menu structures to show the path to load the corresponding page. For example, More > Network > Mode Selection means the Mode Selection function page is under the Network menu that is located in the More tab.
Note:	Do not ignore this type of comment, it is to remind you to better use the device, to avoid the operation of the error that will cause the function to be invalid.
Tips:	Indicates important information that helps you make better use of your device.

More Info

The latest software, management app and utility are available from the Download Center at <https://docs.wavlink.xyz/Firmware/> .

A quick installation guide can be found in this guide.

Specifications can be found on the product page at <https://docs.wavlink.xyz/>.

If you encounter any issues, please don't hesitate to email contact@wavlink.com to provide feedbacks or contact online customer service, thank you !

Speed/Coverage Disclaimer

*Maximum wireless signal rates are the physical rates derived from IEEE Standard 802.11 specifications. Actual wireless data throughput and wireless coverage are not guaranteed and will vary as a result of 1) environmental factors, including building materials, physical objects, and obstacles, 2) network conditions, including local interference, volume and density of traffic, product location, network complexity, and network overhead, and 3) client limitations, including rated performance, location, connection, quality, and client condition.

Information in this document is subject to change without notice. The manufacturer does not make any representations or warranties (implied or otherwise) regarding the accuracy and completeness of this document and shall in no event be liable for any loss of profit or any commercial damage, including but not limited to special, incidental, consequential, or other damage.

Safety Instructions

Always read the safety instructions carefully.

Keep this Quick Start Guide for future reference.

Keep this equipment away from humidity.

If any of the following situation arises, get the equipment checked by a service technician:

☐ The equipment has been exposed to moisture.

☐ The equipment has been dropped and damaged.

☐ The equipment has an obvious sign of breakage.

☐ The equipment has not been working well or you cannot get it work according to Quick start Guide.

Copyright Statement

No part of this publication may be reproduced in any form by any means without the prior written permission.

Other trademarks or brand names mentioned herein are trademarks or registered trademarks of their respective companies.

WEEE Directive & Product Disposal

At the end of its serviceable life, this product should not be treated as household or general waste. It should be handed over to the applicable collection point for the recycling of electrical and electronic equipment, or returned to the supplier for disposal.

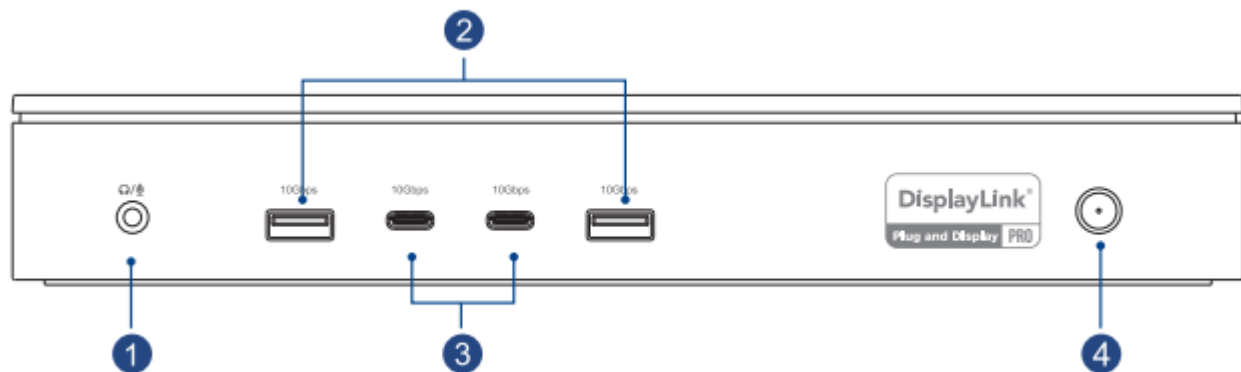


Chapter 1 Product Basic Info

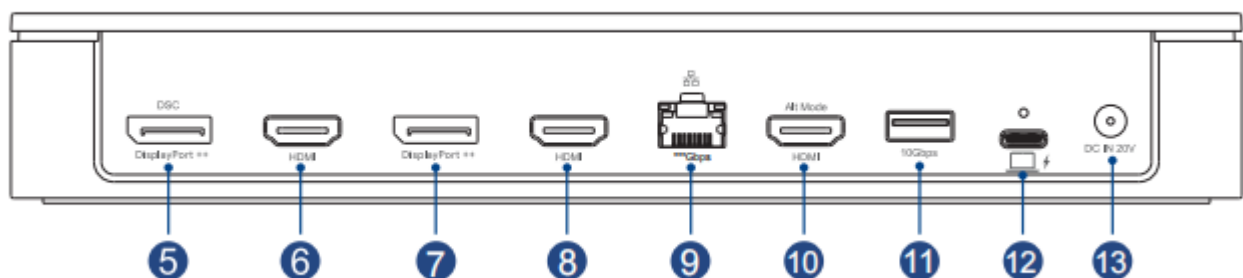
This chapter contains the following sections:

- [Overview](#)
- [Specification](#)
- [System Requirement](#)
- [In the Box](#)

Overview



- ① 4-pole Audio/Mic
- ② USB-A 10Gbps
- ③ USB-C 10Gbps
- ④ Power Switch (with Status Indicator)



- ⑤ DisplayPort++ (DSC, 8K@30Hz)
- ⑥ HDMI 1

- ⑦ DisplayPort++
- ⑧ HDMI 2
- ⑨ RJ45 Ethernet
- ⑩ HDMI 3 Alt Mode
- ⑪ USB-A 10Gbps
- ⑫ USB-C (Host, PD 100W)
- ⑬ DC IN 20V

Model	Ethernet Specification
UG75PD5-3H2D5	5Gbps
UG75PD5-3H2D2	2.5Gbps
UG75PD5-3H2D1	1Gbps

Specification

- 2 x DisplayPort1.4 and 3 x HDMI ports support max 8K@30Hz or quintuple 4K display.
- 1 x Type-C UFP supports PD100W upstream charging for laptop.
- 3 x USB3.1 Type- A (10G) ports extend more connectivity to USB devices.
- 2 x USB3.1 Type- C (10G) ports extend more connectivity to USB devices.
- 1 x RJ45 Ethernet port supports high-speed data transmission.
- 1 x Kensington lock for security.
- 1 x Combo Audio/Mic port.

System Requirement

- Windows 10/11 or later
- Mac OS 11.x or later

In the Box

- 1 x Universal 8K/Quintuple 4K Docking Station

- 1 x Type-C to Type-C 10Gbps Cable with Type-C to Type-A Adapter
- 1 x DC20V/6.5A Power Adapter
- 1 x AC Power Cable
- 1 x Cable Holder
- 1 x Quick Start Guide

Chapter 2 Driver Installation

This chapter contains the following section:

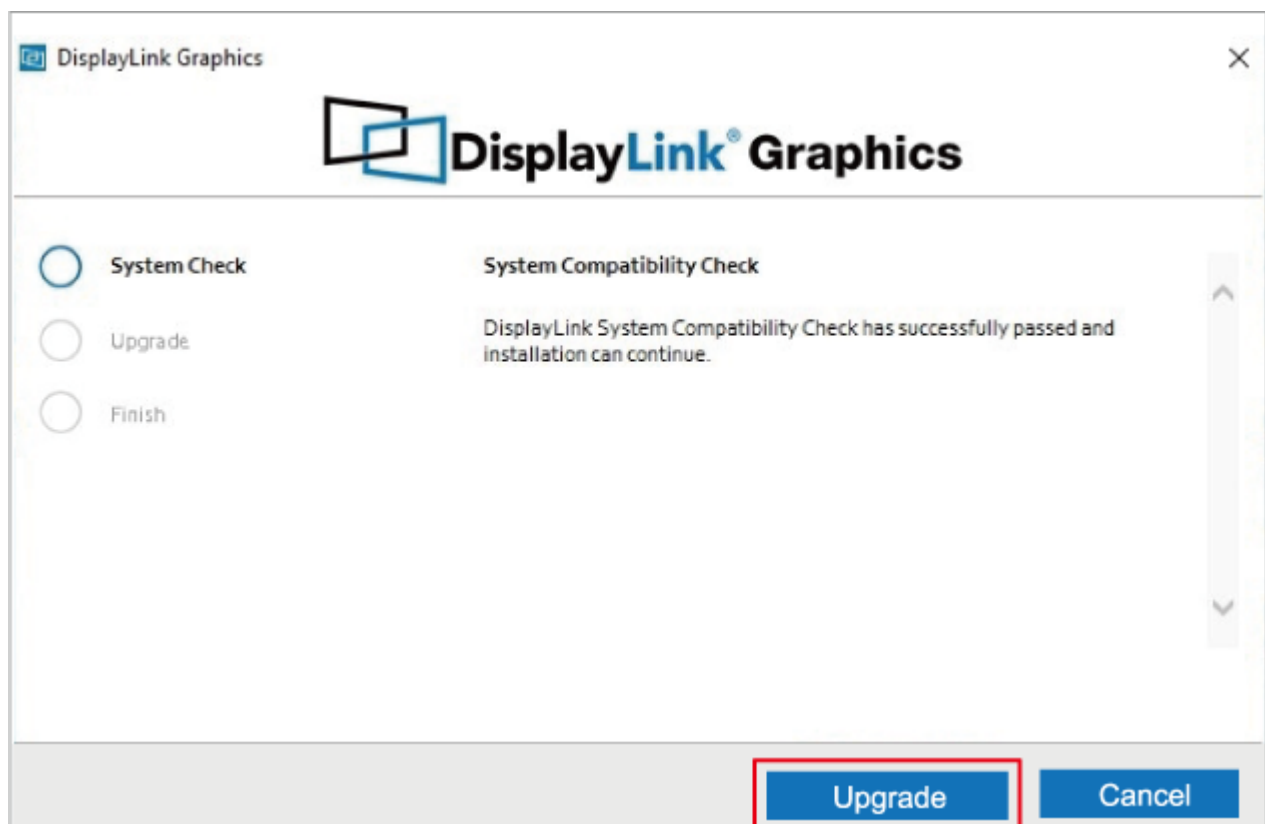
- [Driver Installation](#)

Driver Installation

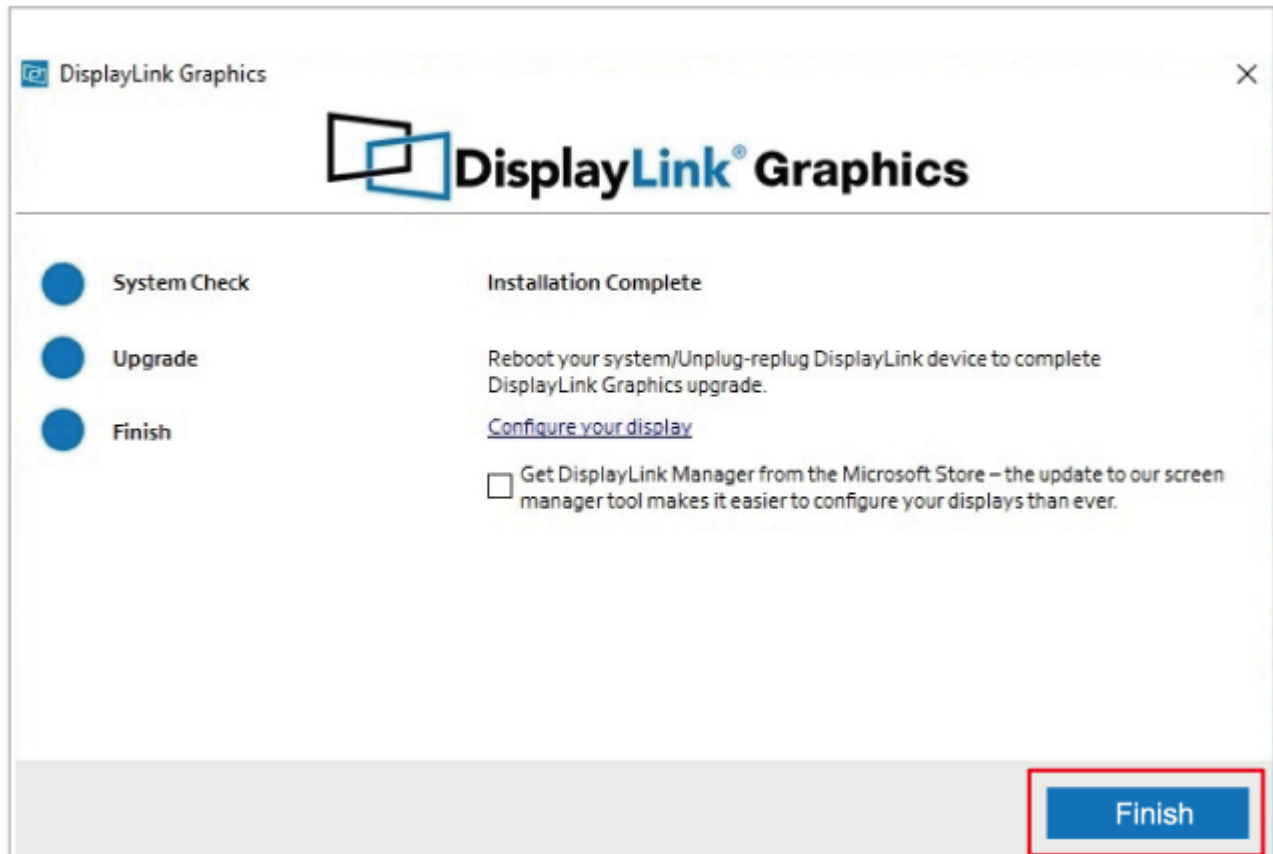
The docking station is based on DisplayLink USB graphics technology which manages the graphics function. It requires downloading and installing DisplayLink graphics driver to make it work, found here: www.wavlink.com/en_us/WL-UG75PD5-3H2D or www.wavlink.com > Support > Driver > WL-UG75PD5-3H2D.

For Windows

1. Locate the downloaded folder and double-click the driver file you just downloaded.
2. If there is no DisplayLink Driver in your Windows computer, open the file and then follow guide to install the Driver; If your Windows host has ever installed the Driver, open the file and then click **Upgrade**.

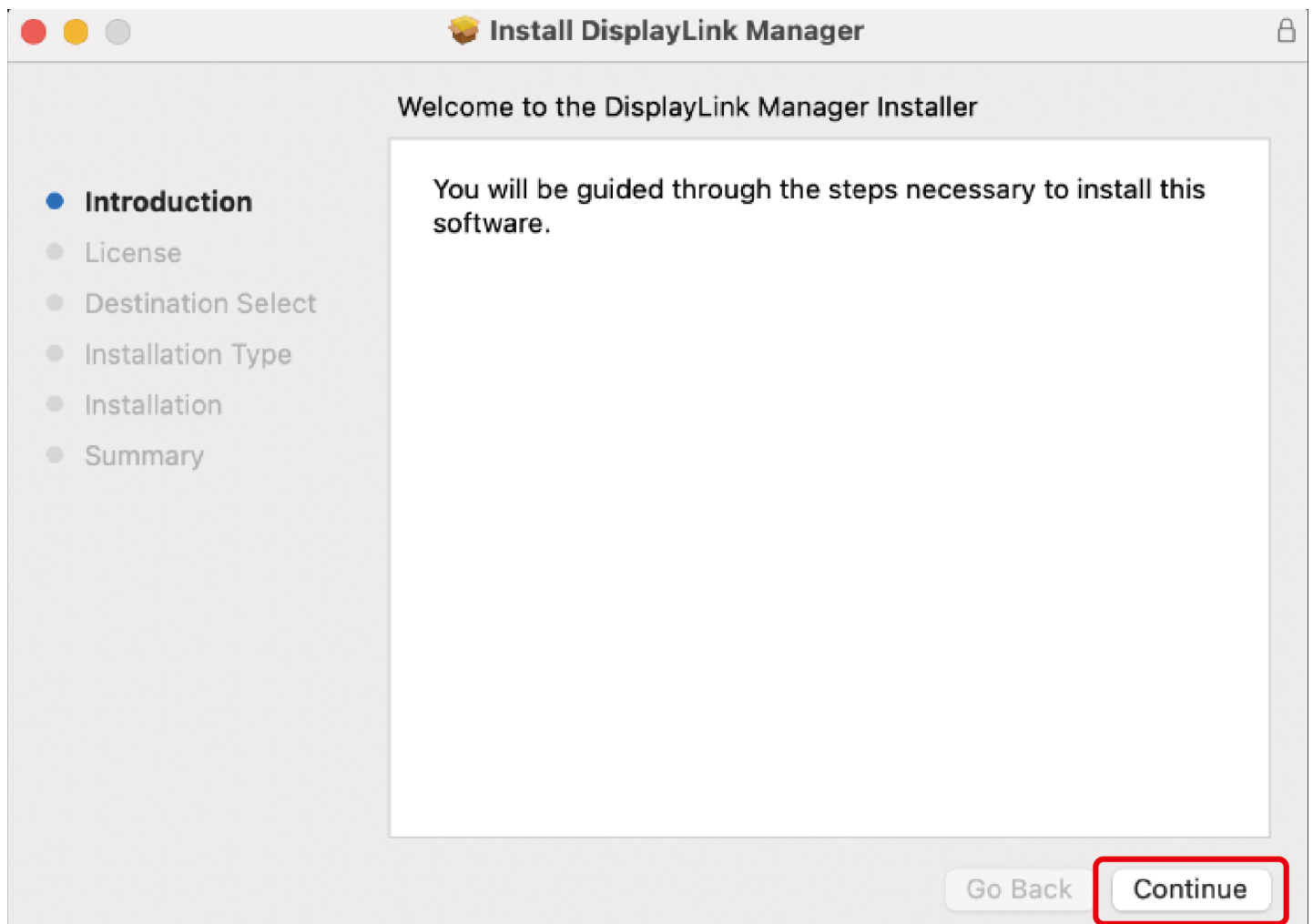


3. Please wait patiently for the installation to complete. After finishing installation, click **Finish**.

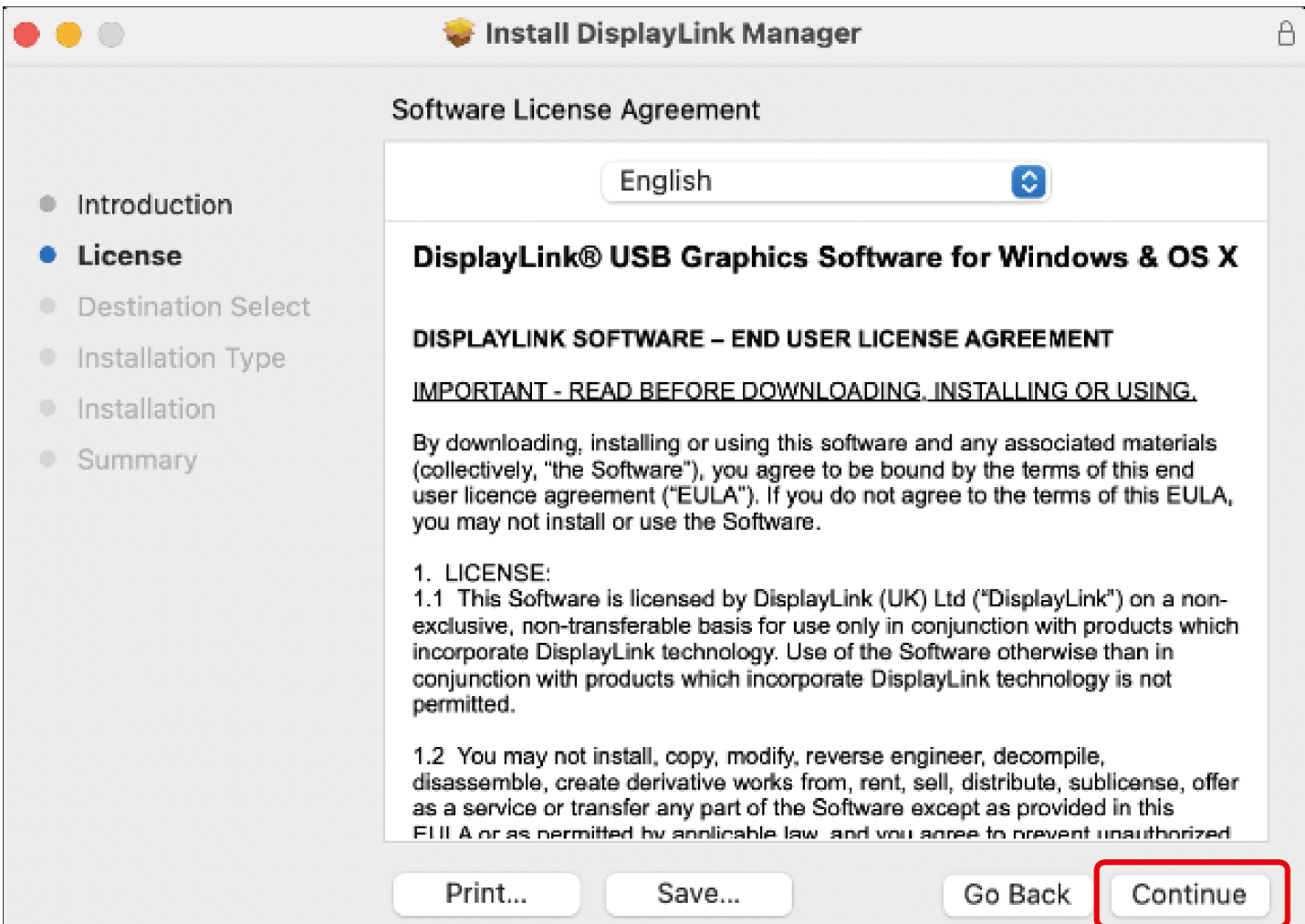


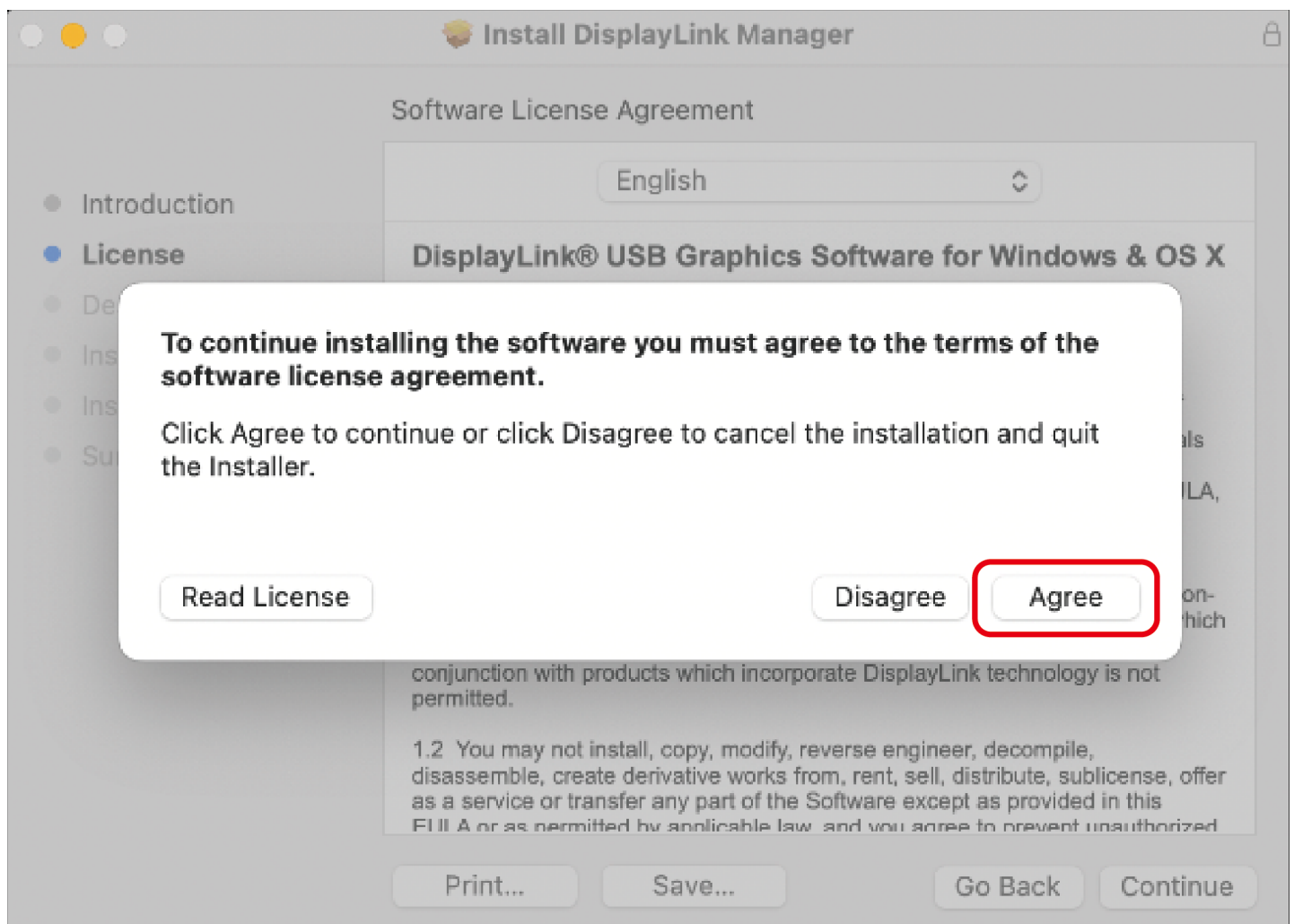
For Mac

1. Double-click the driver file you just downloaded, navigate to the **Install DisplayLink Manager** window, click **Continue**.



2. Click **Continue** to the next window, then click **Agree**.





3. Click **Install** and choose **Use Password...**, then enter the screen password and click **Install Software**.



Installer

Installer is trying to install new software.

Touch ID or enter your password to allow this.

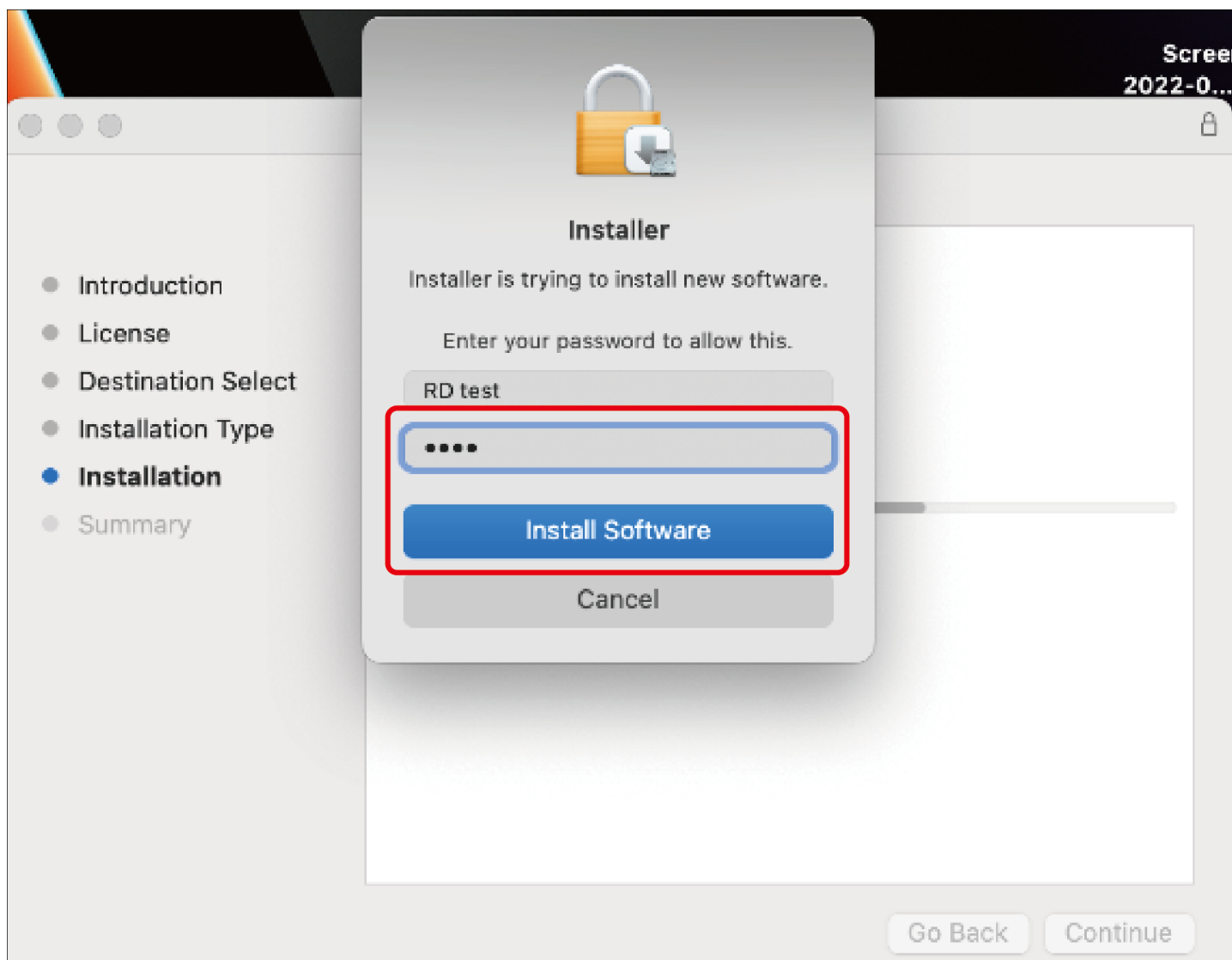
Use Password...

Cancel

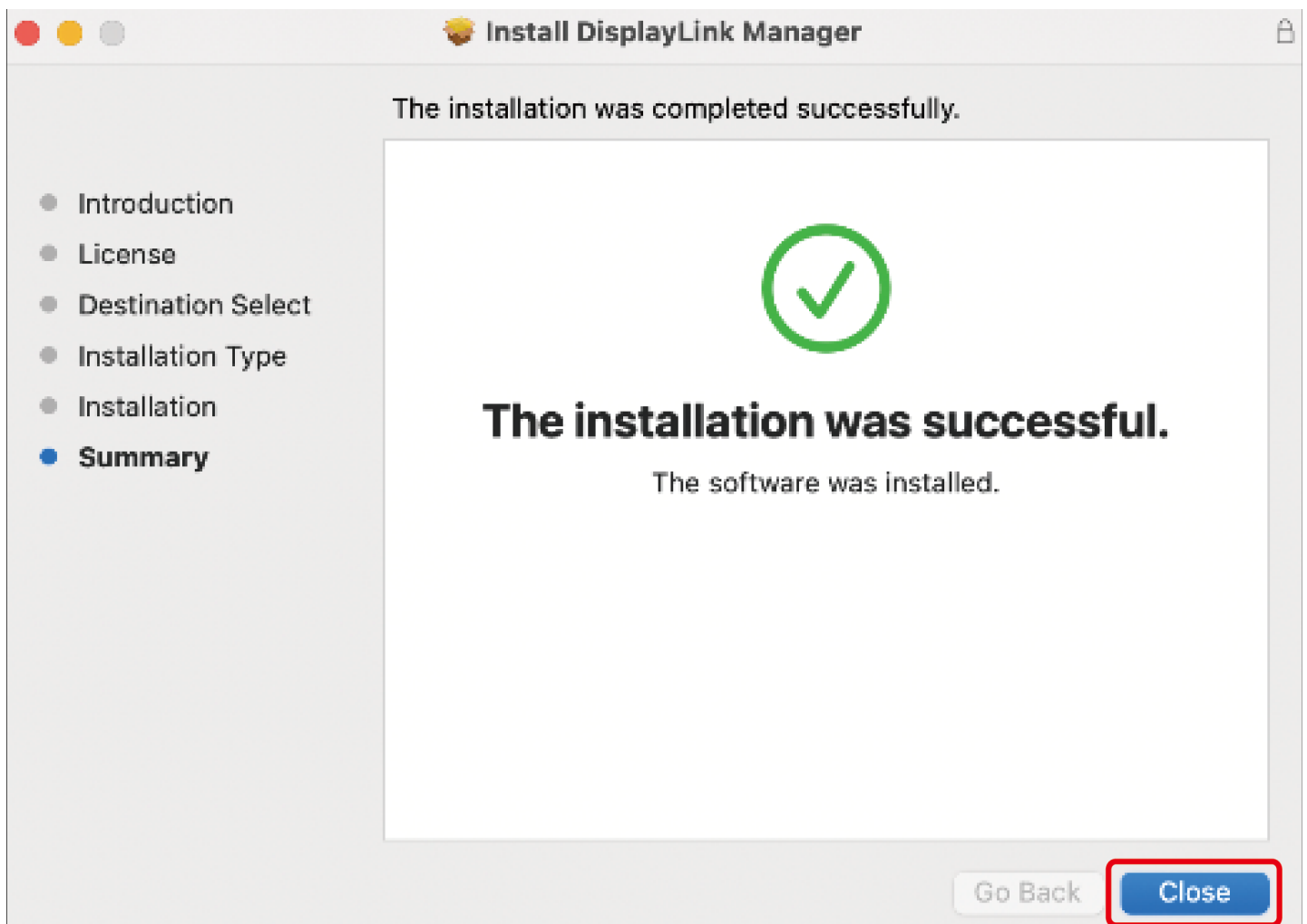
- Introduction
- License
- Destination Select
- Installation Type
- **Installation**
- Summary

Go Back

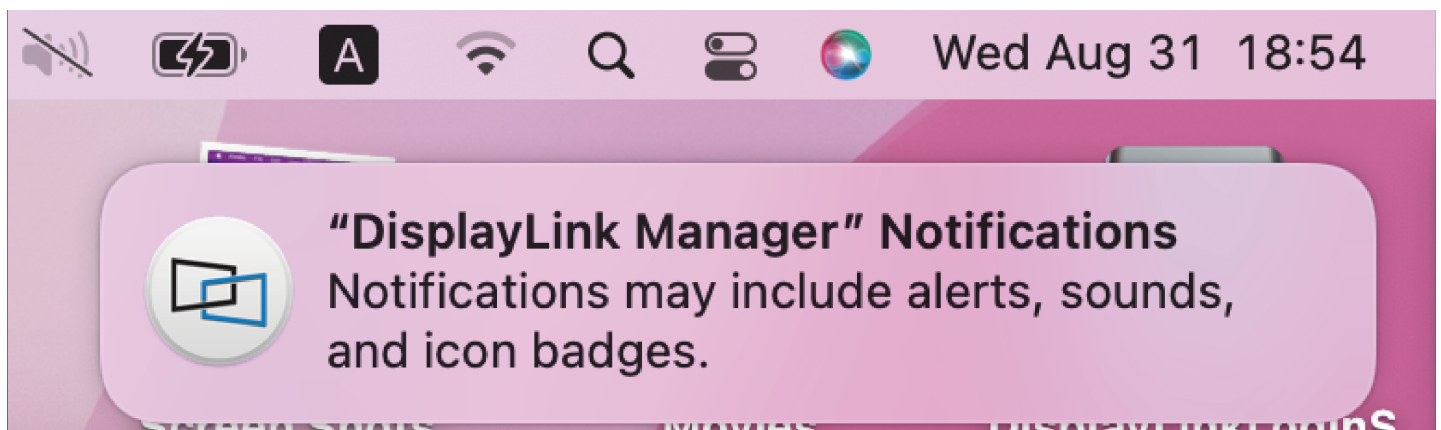
Continue



4. Please wait patiently for the installation to complete, then click **Close**.



5.If you have enabled notifications from DisplayLink Manager, it will remind you to allow screen recording when it detects that this permission is missing.



6.If you didn't get the notification from **DisplayLink Manager**, please click **Go** in the function bar at the top left of screen, then select **Applications** and click **DisplayLink Manager**.



Finder

File

Edit

View

Go

Window

Help

Back

⌘ [

Forward

⌘]

Select Startup Disk

⇧ ⌘ ▲



Recents

⇧ ⌘ F



Documents

⇧ ⌘ O



Desktop

⇧ ⌘ D



Downloads

⇧ ⌘ L



Home

⇧ ⌘ H



Computer

⇧ ⌘ C



AirDrop

⇧ ⌘ R



Network

⇧ ⌘ K



iCloud Drive

⇧ ⌘ I



Shared

⇧ ⌘ S



Applications

⇧ ⌘ A



Utilities

⇧ ⌘ U

Recent Folders

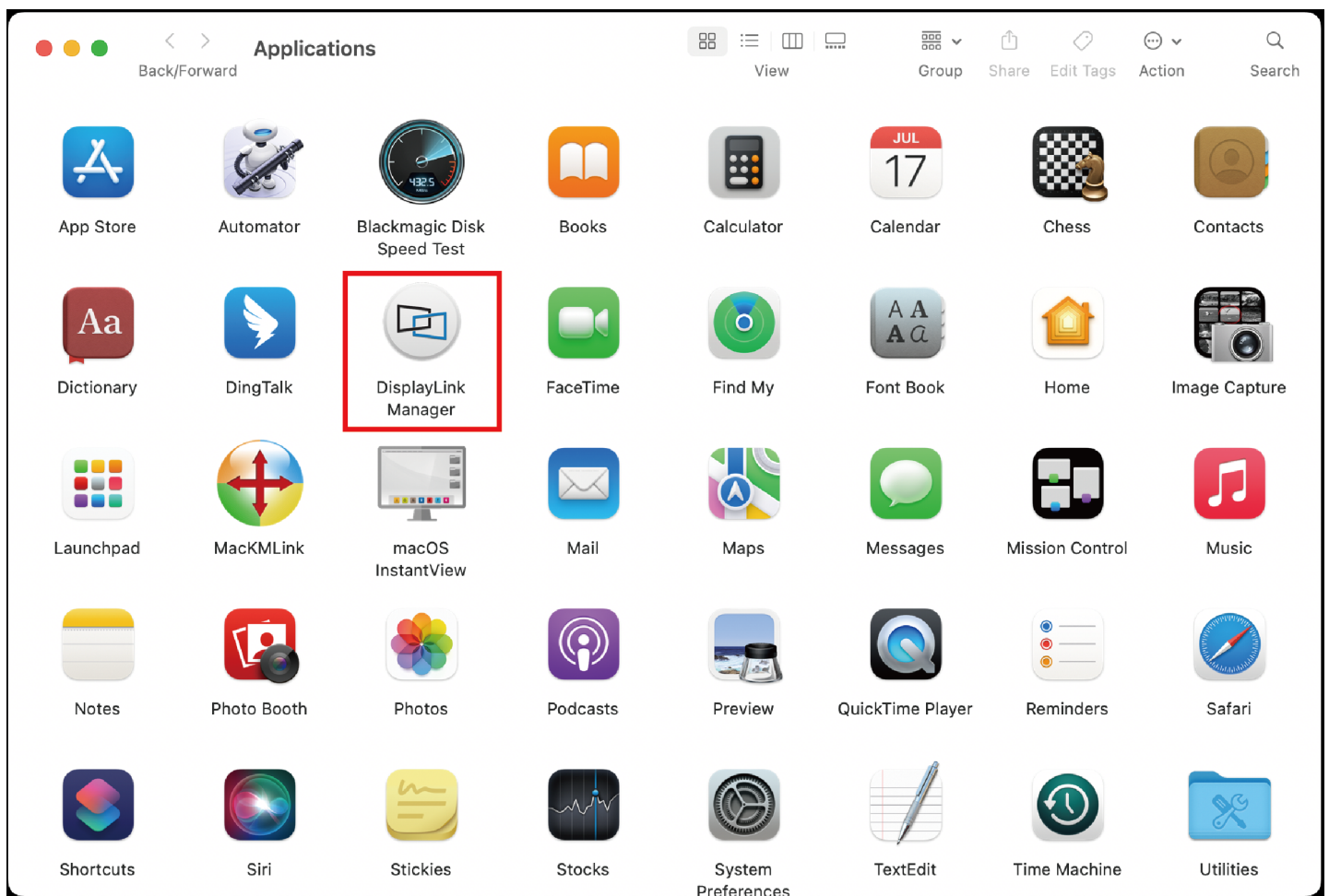


Go to Folder...

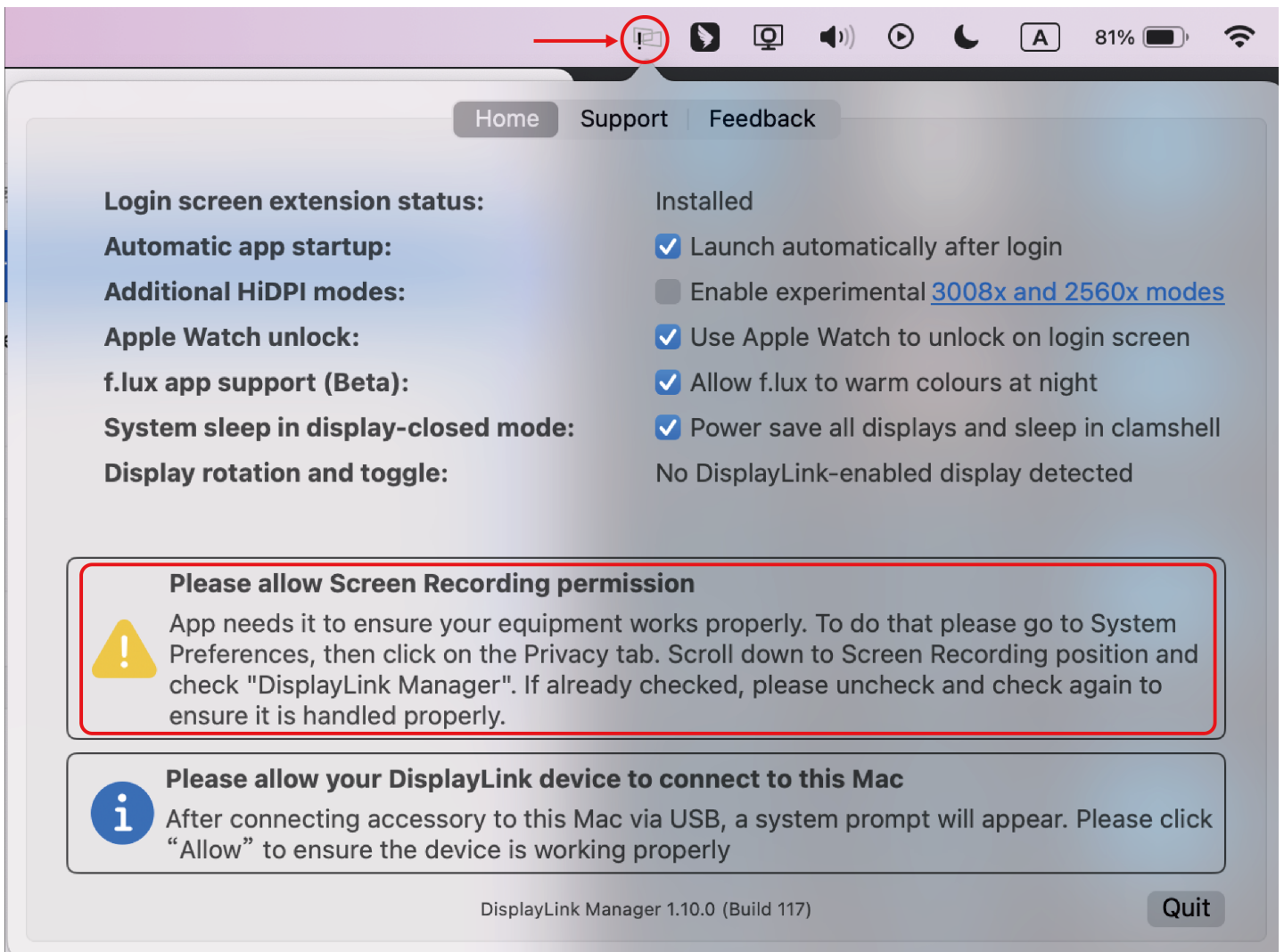
⇧ ⌘ G

Connect to Server...

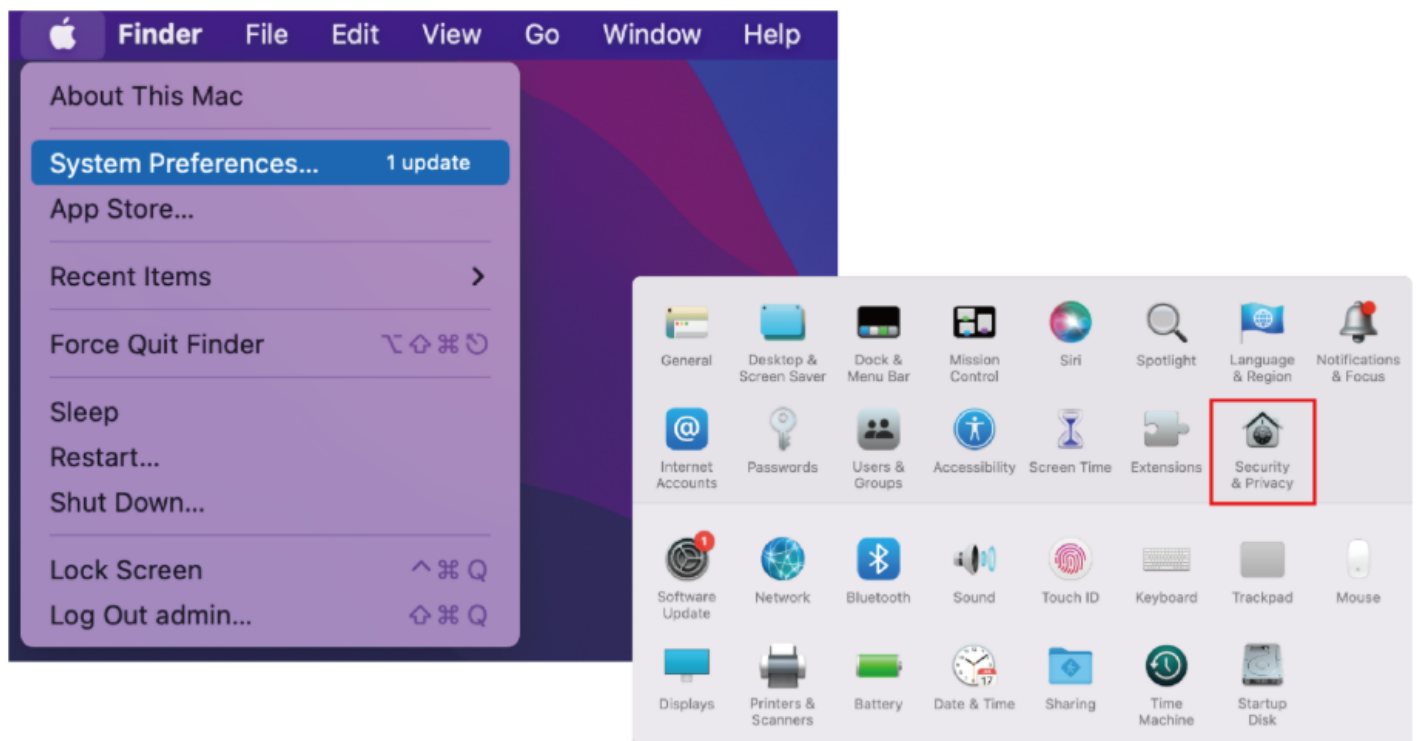
⌘ K



7. Click the **DisplayLink Graphics** icon in the function bar at the top right of the screen, and the notification will also appear in the DisplayLink Manager window. A warning is found here, you should allow the screen recording permission for **DisplayLink Manager**.



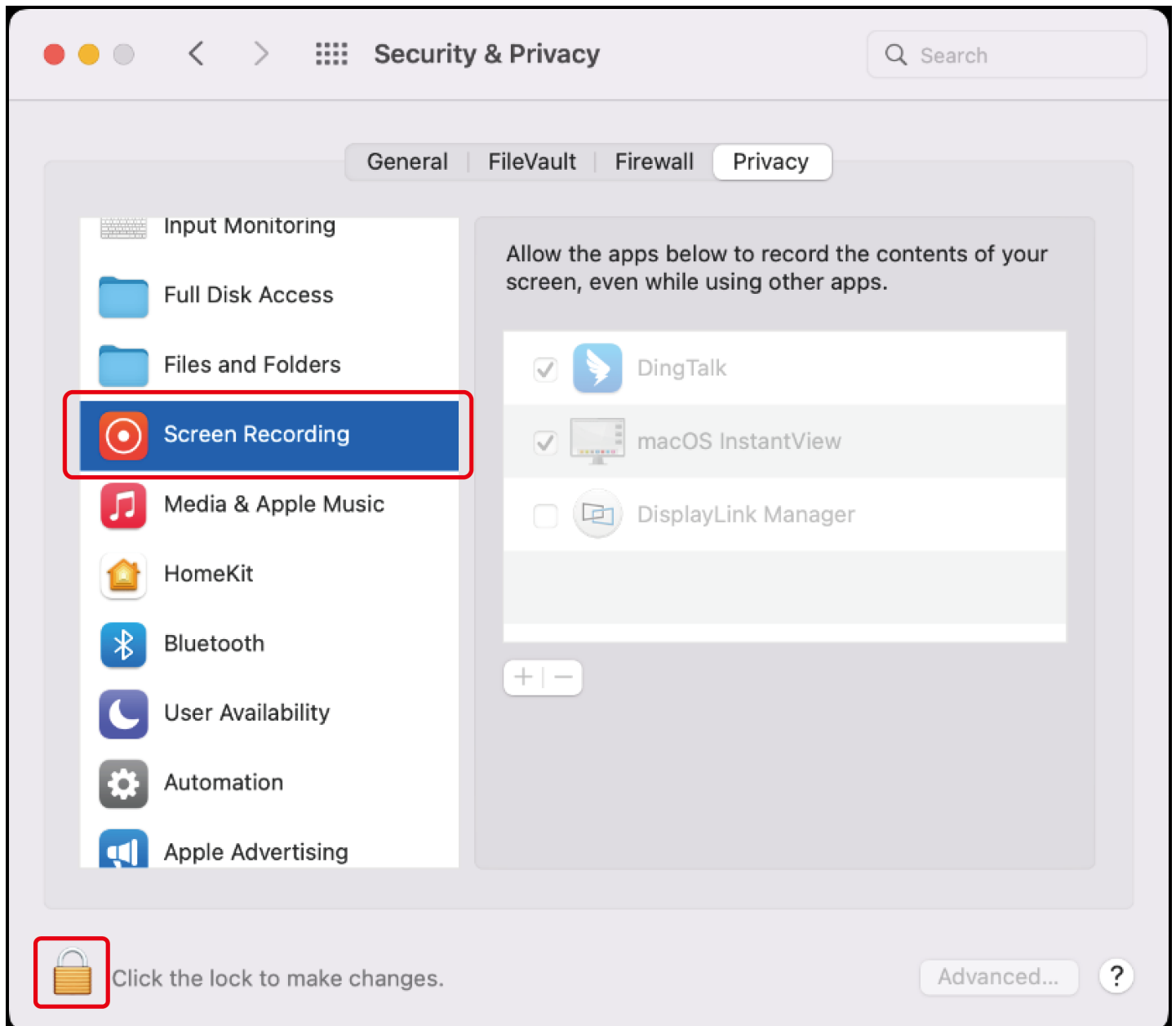
8. Click the **Apple** icon → **System Preferences**, then double click **Security & Privacy**.



9.Enable **Screen Recording** to allow the **DisplayLink Manager application** to capture pixels and send them to your USB peripheral:

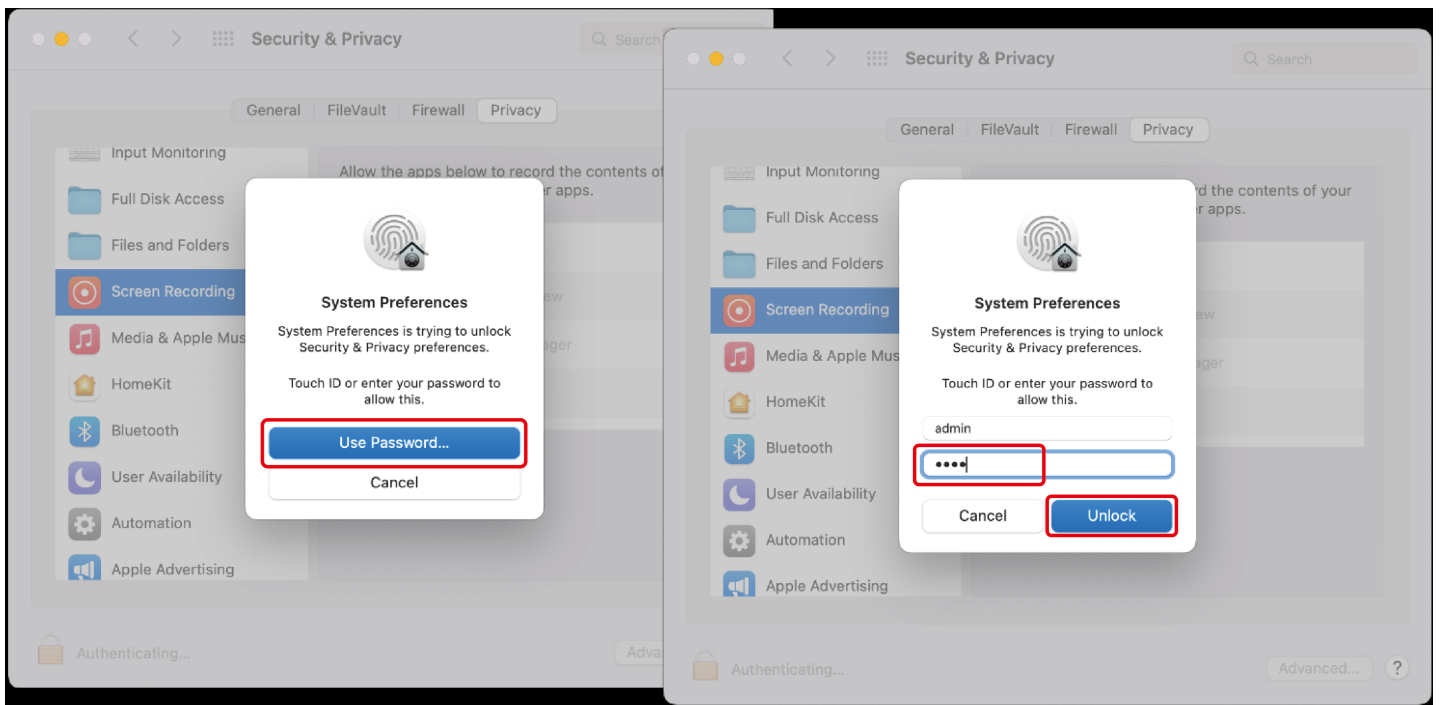
9.1 Select **Screen Recording** in **Privacy** tab.

9.2 Click the **Lock** icon at the bottom left of the window to unlock.



10.When the small window pops up, choose a password or use your fingerprint to unlock.

10.1 If you use password to unlock, and click **Use Password**, then enter your password and choose **Unlock**.

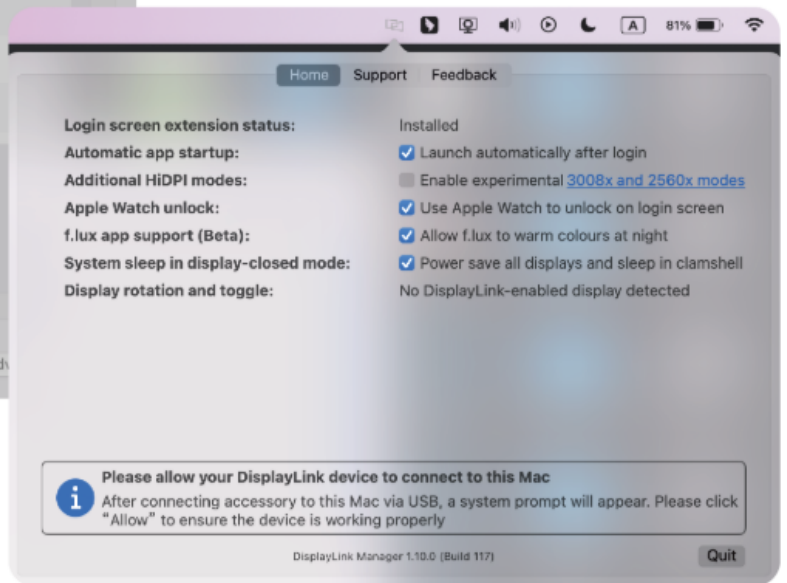
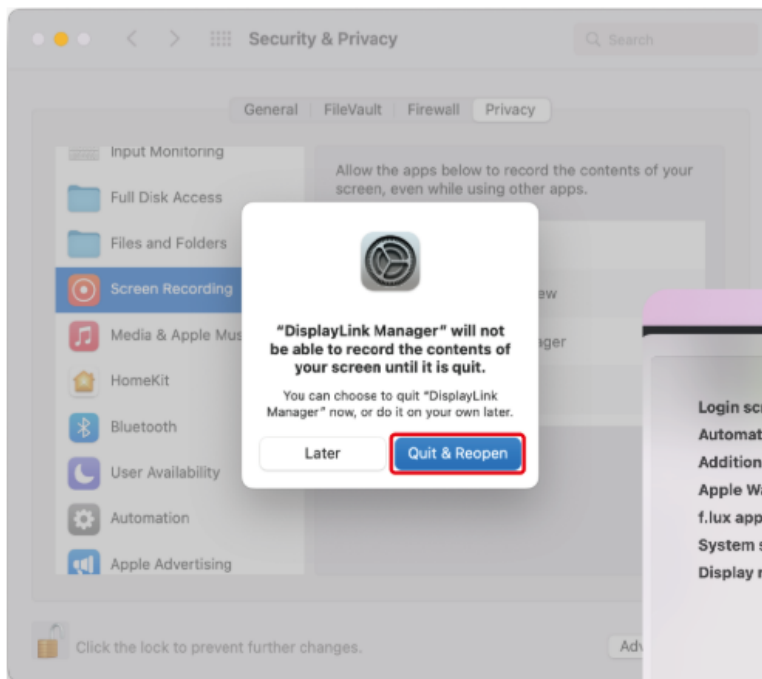


10.2 If you use fingerprint to unlock, it will jump directly to the next step.

11. Check the **DisplayLink Manager** in the right list.



12. Click **Quit & Reopen** to restart the driver, then you can click the **DisplayLink Graphics** icon in the function bar at the top right of the screen to ensure whether the warning has been lifted and whether the driver can work properly.



Chapter 3 How to Connect

This chapter contains the following sections:

- [How to Connect](#)
- [Display Resolution](#)

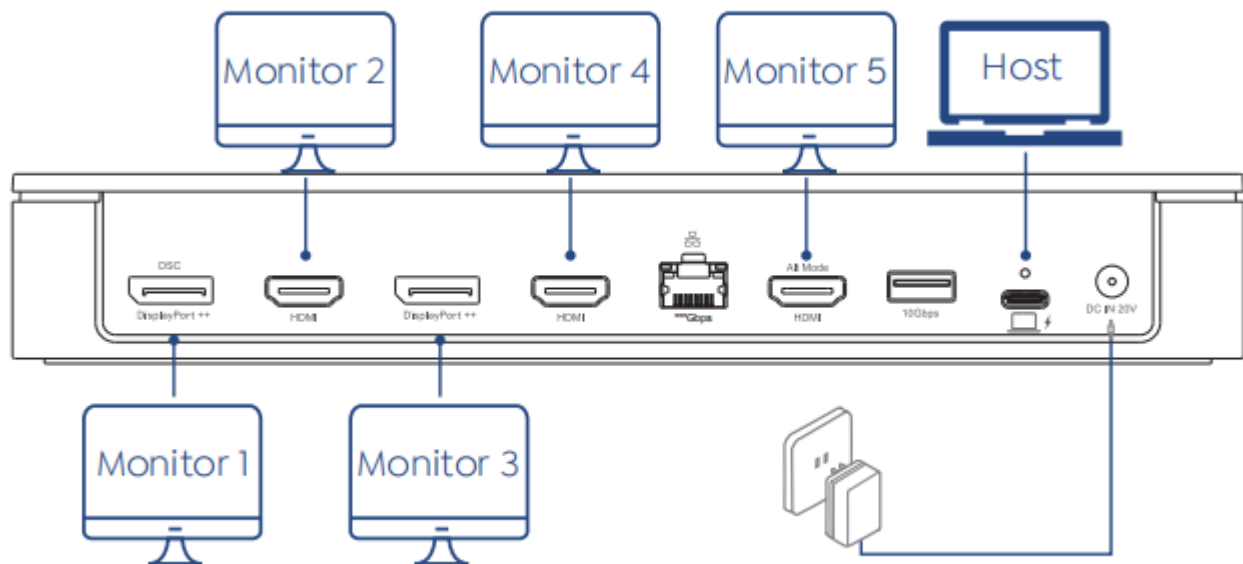
How to Connect

Before connection, please make sure that you have installed the driver from our website.

Step 1. Connect the host laptop to the USB-C upstream port.

Step 2. Connect five video ports (HDMI/DisplayPort) to your monitors.

Step 3. Connect the power adapter to the DC In, then plug the power adapter into a power source.



Display Resolution

Item	HDMI 1 Alt mode	HDMI 2	HDMI 3	DisplayPort++	DisplayPort++ DSC
Single Display	4K@60Hz	/	/	/	/
	/	4K@60Hz	/	/	/
	/	/	4K@60Hz	/	/
	/	/	/	4K@60Hz	/
	/	/	/	/	4K@120Hz/8K@30Hz
Dual Display	4K@60Hz	4K@60Hz	/	/	/
	4K@60Hz	/	4K@60Hz	/	/
	4K@60Hz	/	/	4K@60Hz	/
	4K@60Hz	/	/	/	4K@120Hz/8K@30Hz
	/	4K@60Hz	4K@60Hz	/	/
	/	4K@60Hz	/	4K@60Hz	/
	/	4K@60Hz	/	/	4K@120Hz/8K@30Hz
	/	/	4K@60Hz	4K@60Hz	/
	/	/	4K@60Hz	/	4K@120Hz/8K@30Hz
	/	/	/	4K@60Hz	4K@120Hz/8K@30Hz
Triple Display	4K@60Hz	4K@60Hz	4K@60Hz	/	/
	4K@60Hz	4K@60Hz	/	4K@60Hz	/
	4K@60Hz	4K@60Hz	/	/	4K@120Hz/8K@30Hz
	4K@60Hz	/	4K@60Hz	4K@60Hz	/
	4K@60Hz	/	4K@60Hz	/	4K@120Hz/8K@30Hz
	4K@60Hz	/	/	4K@60Hz	4K@120Hz/8K@30Hz
	/	4K@60Hz	4K@60Hz	4K@60Hz	/
	/	4K@60Hz	4K@60Hz	/	4K@120Hz/8K@30Hz
	/	4K@60Hz	/	4K@60Hz	4K@120Hz/8K@30Hz
	/	4K@60Hz	/	4K@60Hz	4K@120Hz
	/	/	4K@60Hz	4K@60Hz	4K@120Hz/8K@30Hz
	/	/	4K@60Hz	4K@60Hz	4K@120Hz
Quad Display	4K@60Hz	4K@60Hz	4K@60Hz	4K@60Hz	/
	4K@60Hz	4K@60Hz	4K@60Hz	/	4K@120Hz/8K@30Hz
	4K@60Hz	4K@60Hz	/	4K@60Hz	4K@120Hz/8K@30Hz
	4K@60Hz	4K@60Hz	/	4K@60Hz	4K@120Hz
	/	4K@60Hz	4K@60Hz	4K@60Hz	4K@120Hz
	4K@60Hz	/	4K@60Hz	4K@60Hz	4K@120Hz/8K@30Hz
	4K@60Hz	/	4K@60Hz	4K@60Hz	4K@120Hz
Quintuple Display	4K@60Hz	4K@60Hz	4K@60Hz	4K@60Hz	4K@120Hz

Note:

- 1.Ensure your laptop's USB-C port supports video output; otherwise, the HDMI (Alt. Mode) may not work.
- 2.For 4K@60Hz via HDMI (Alt. Mode), your laptop must support DP 1.4 via type-C port. With DP 1.2, it will be limited to 4K@30Hz.

Chapter 4 Display Mode Setting

This chapter contains the following section:

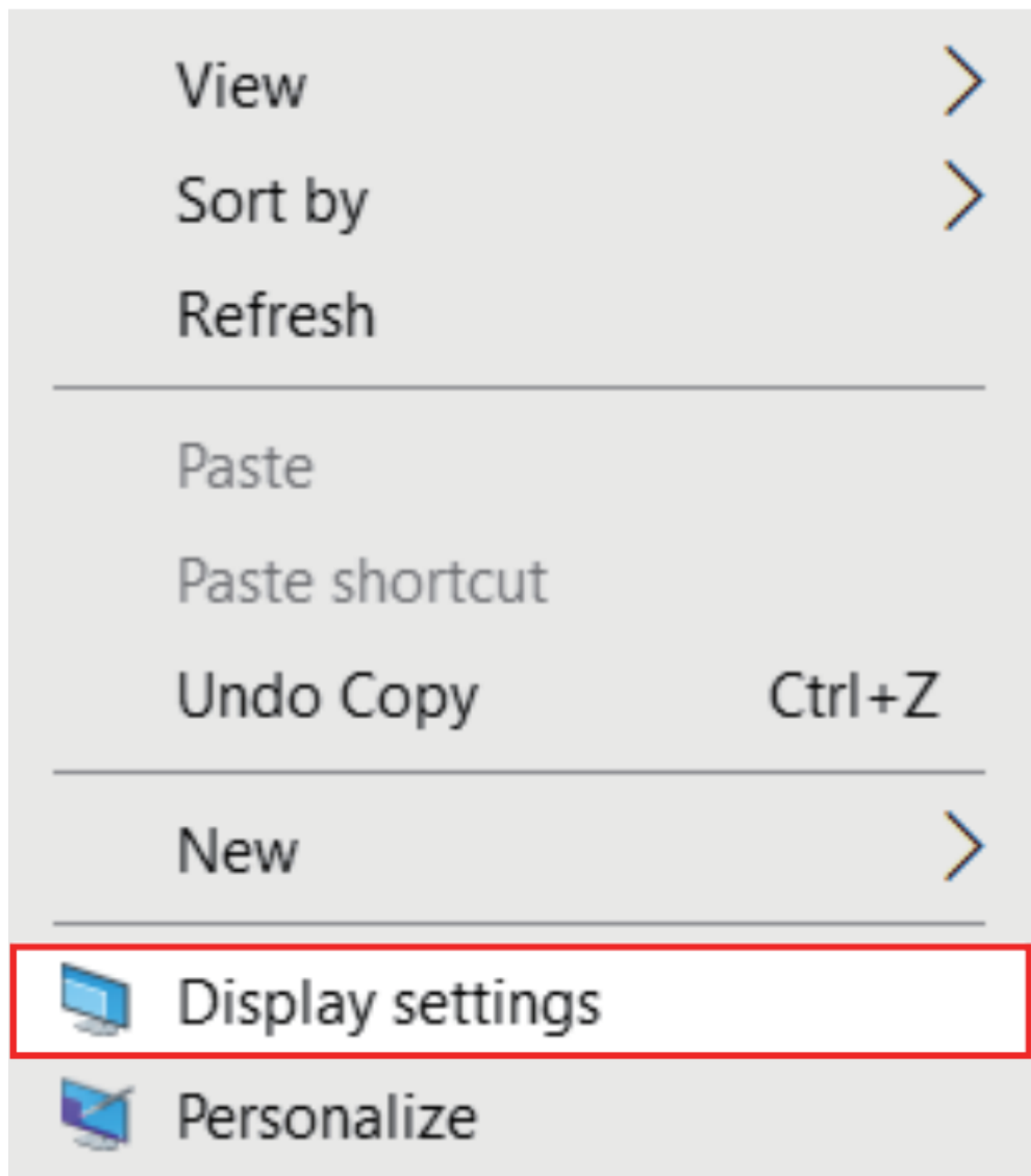
- [Display Mode Setting](#).

Display Mode Setting

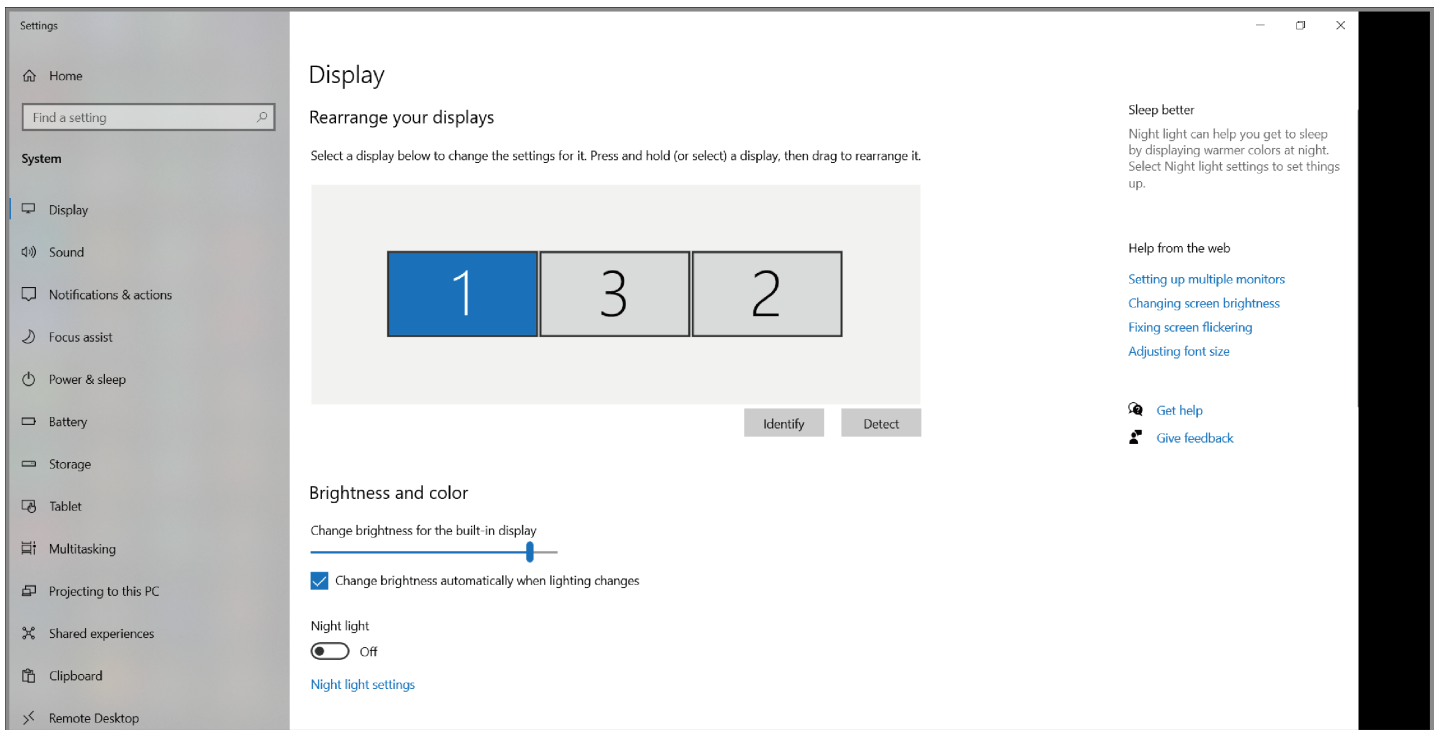
Before configuring the settings, please make sure this docking station has been connected to your laptop and monitors correctly.

For Windows

1. Right-click → **Display settings**.

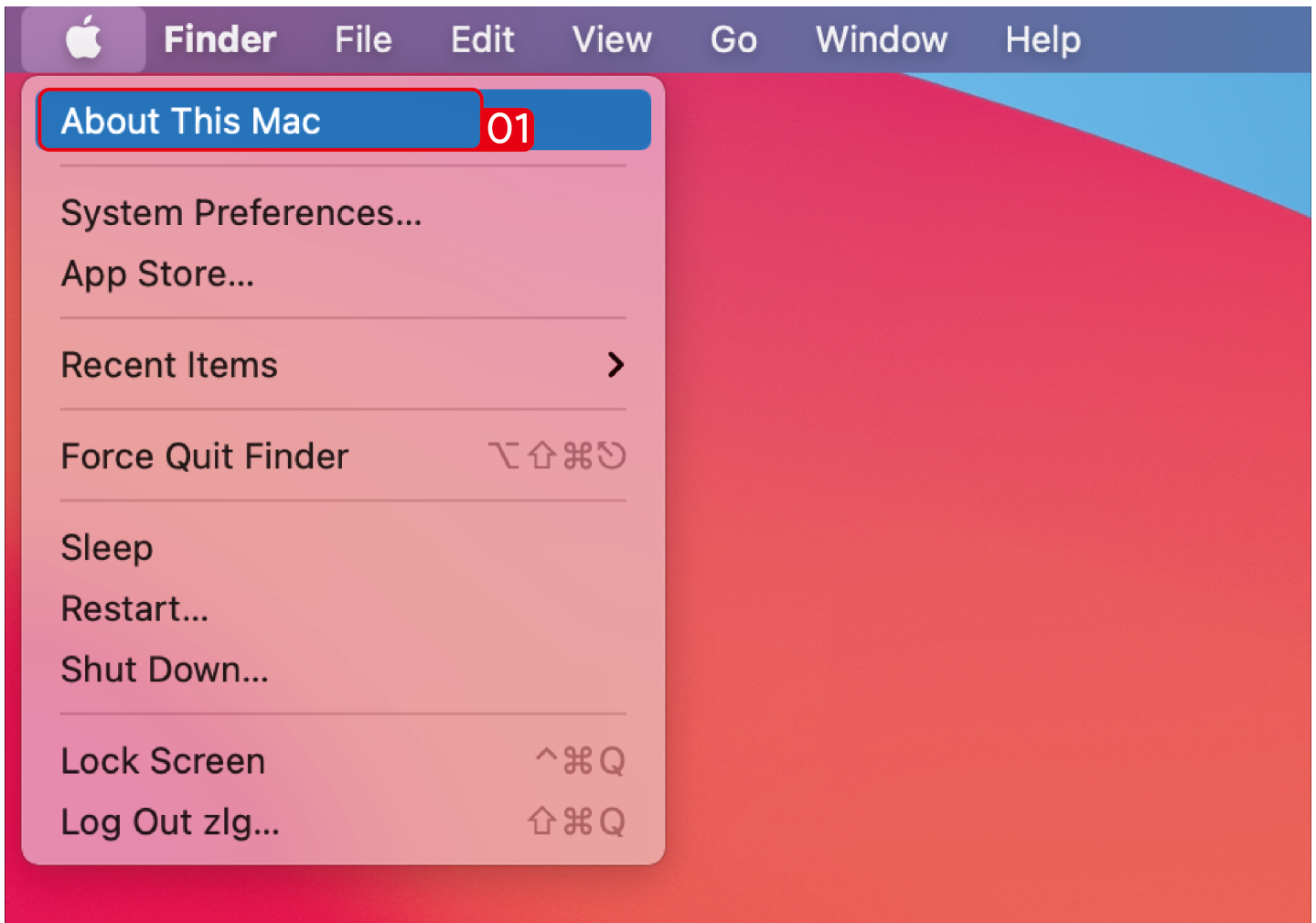


2. In **Display**, you can enjoy different operations of duplicating, extending and rotating on your monitors.

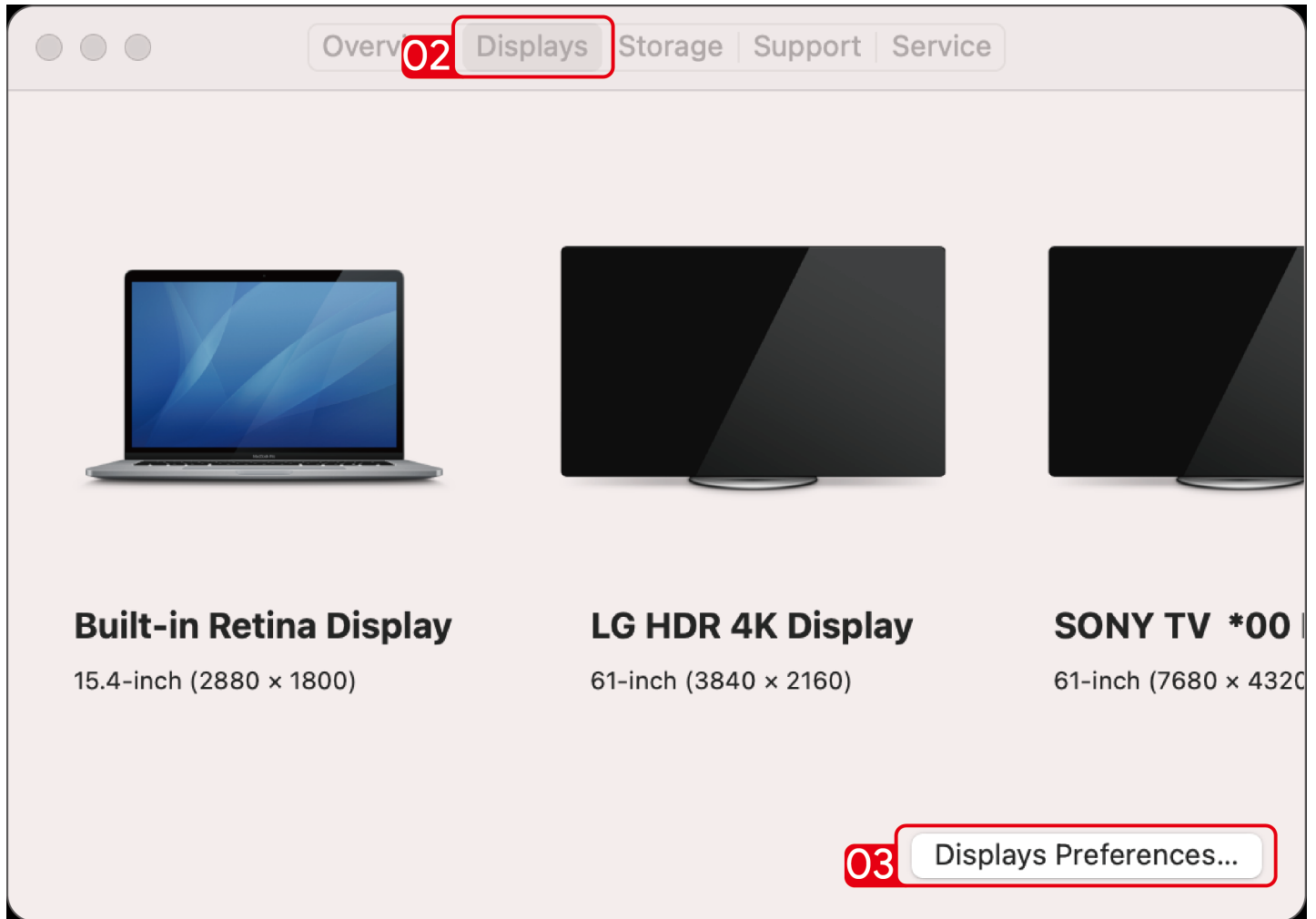


For Mac X12 or Below

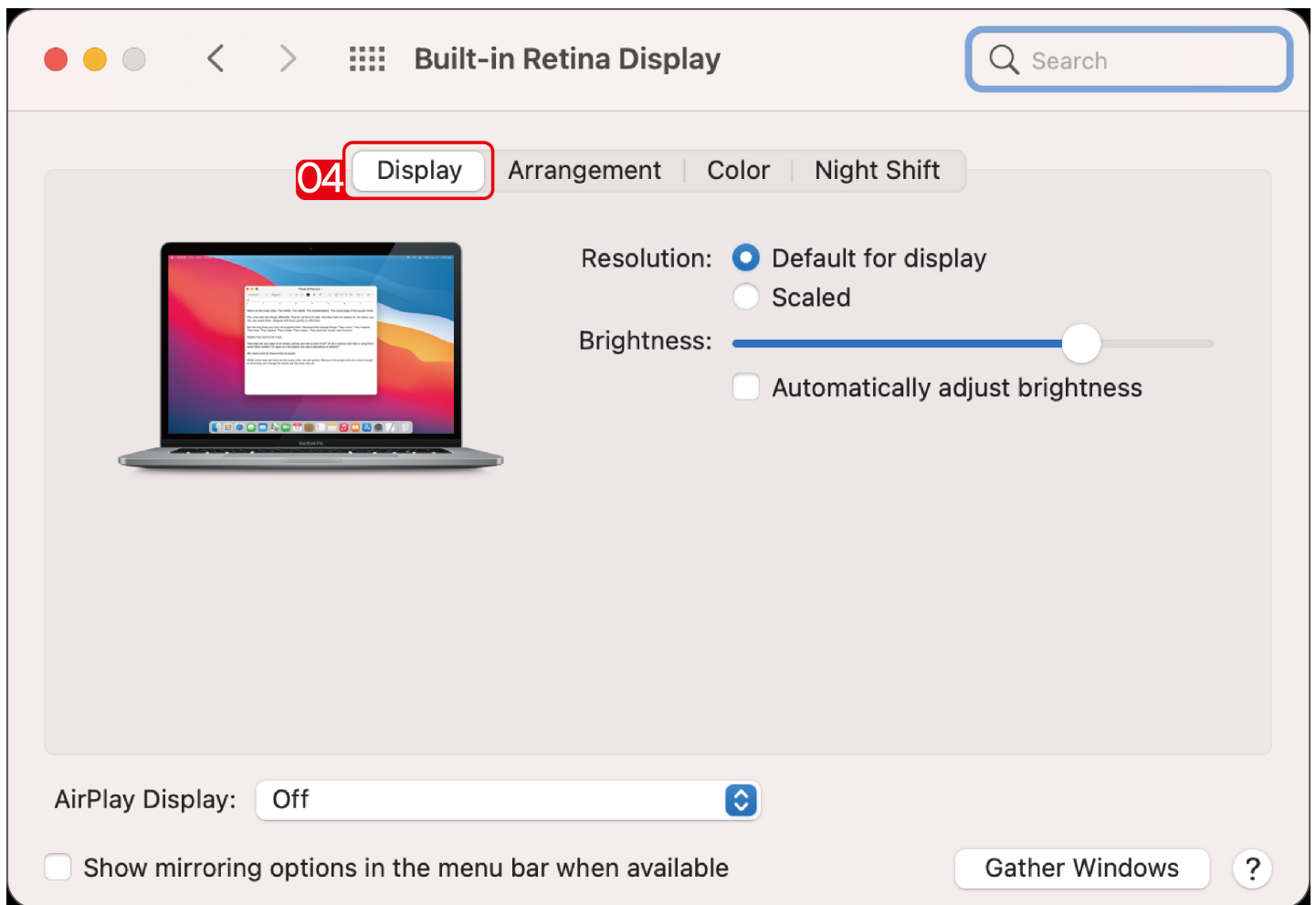
1. Click **Apple** icon → **About This Mac**.



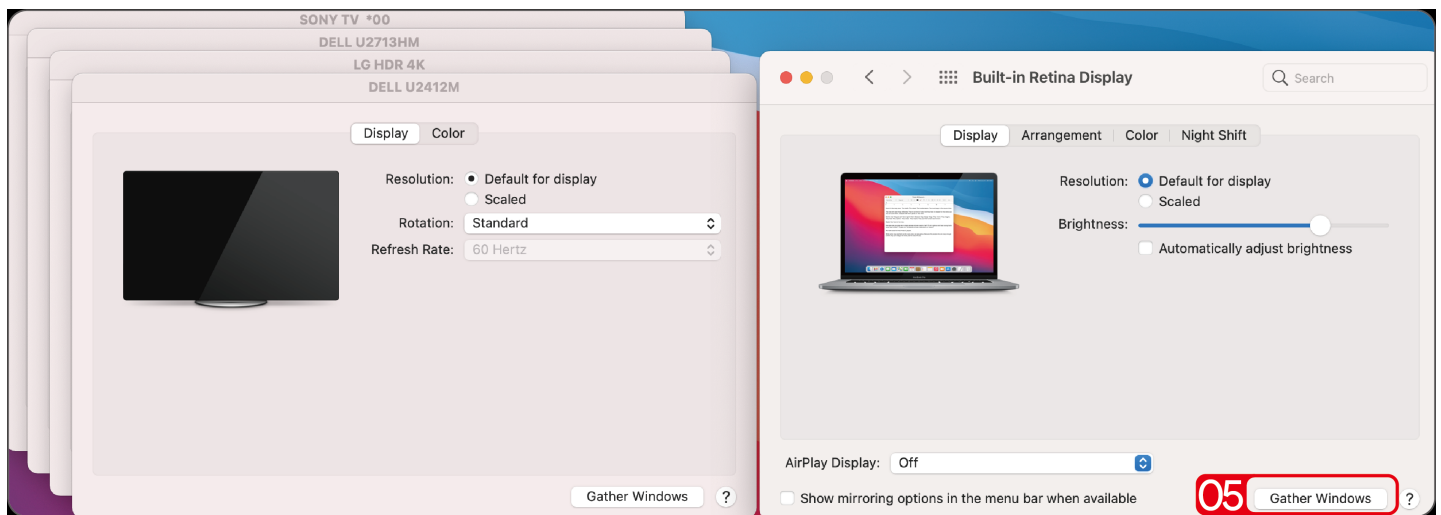
2. Click **Displays** → **Displays Preferences**.



3. Select **Display** from the list, then you can enjoy different operations of mirroring, expanding and rotating on your monitors.

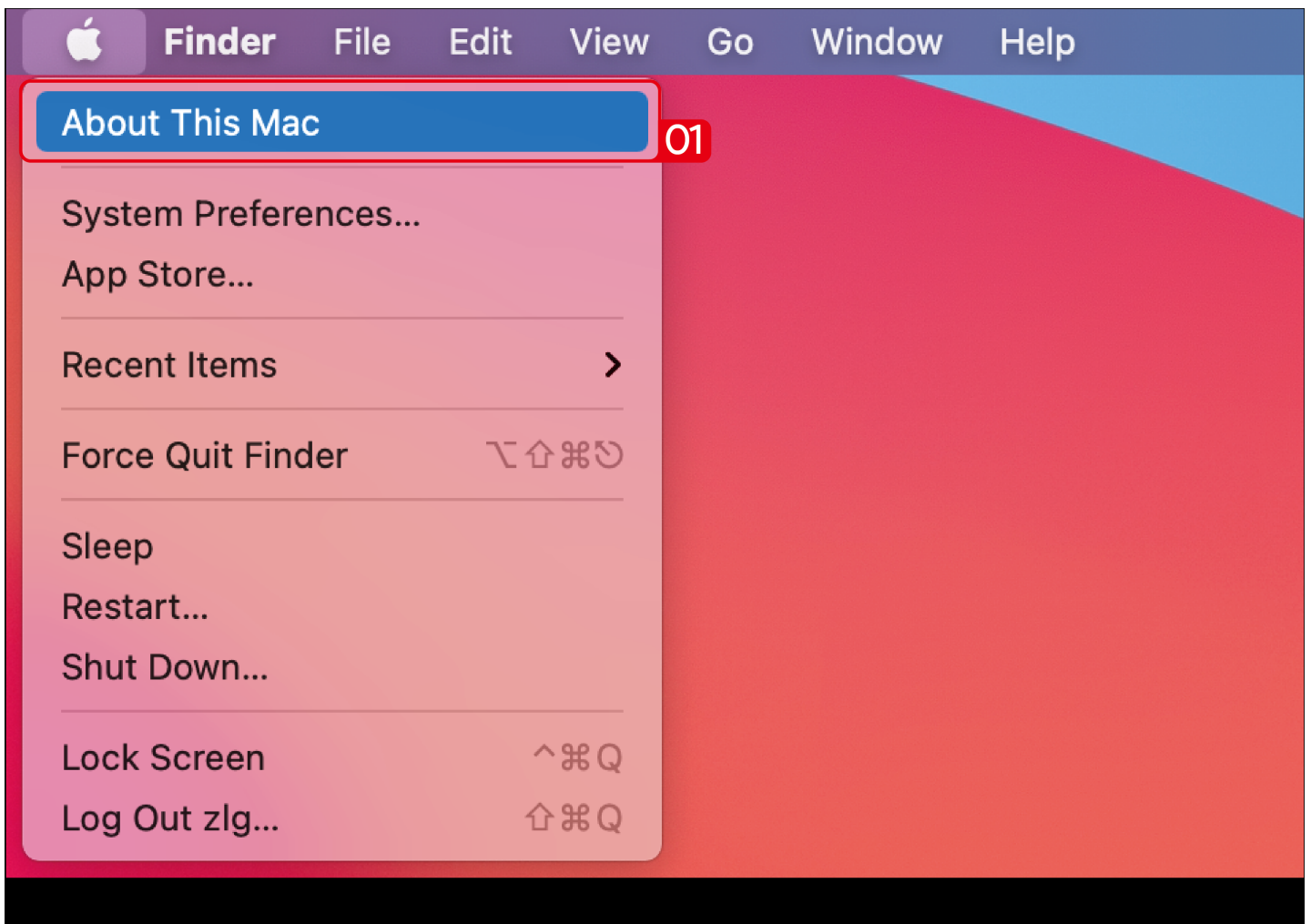


4.Or click **Gather Windows** to gather all connected displays and make separate settings.



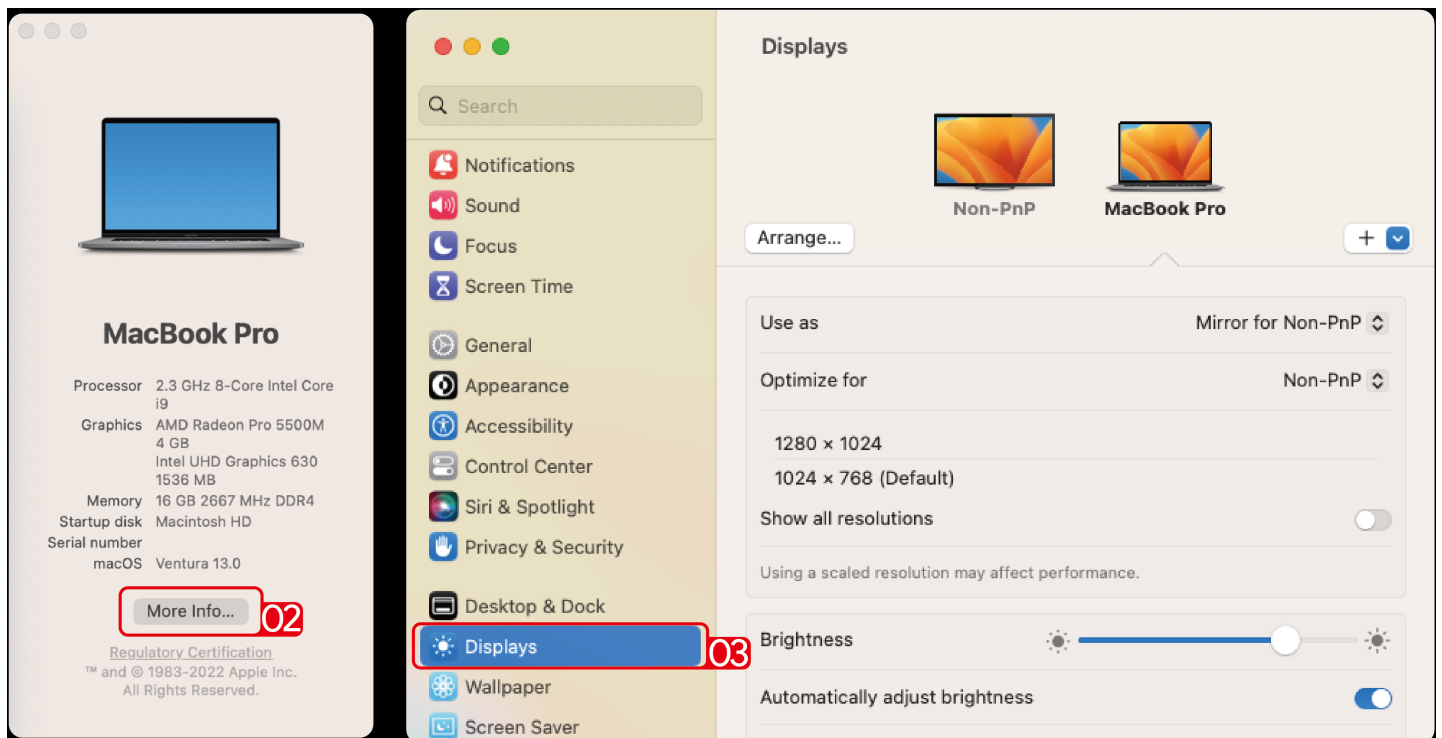
For Mac OS X13

1.Click **Apple** icon → **About This Mac**.



2. Click **More Info...**.

3. Select **Displays** from the list, then you can enjoy different operations of mirroring, expanding and rotating on your monitors.



Chapter 5 FAQ

This chapter contains the following sections:

- [FAQ](#)
- [Aftersale Service](#)

FAQ

Q1. Why when I install the app for my Macbook, the App want to record my screen?

A1. Mac OS requires the user to permit "Screen Recording" for DisplayLink driver to work properly. But the DisplayLink Manager will not send any information to the wavlink and the displaylink/synaptics. Please do not worry about that.

Q2. Why the apple tv, hulu, netflix could not play when the docking is connected?

A2. The docking could not support hdcp, the protected content such as apple tv, hulu, netflix could not play when the docking is connected. And it is as expected. Please disconnect the docking when you are playing these videos. Or you could also try to use the Chrome browser to watch these videos and disable the Hardware Acceleration.

Aftersale Service

Need help?

We're here for you!



Online support: [wavlink.com](https://www.wavlink.com)

Available Mon-Fri 8:30 am-5:30pm (UTC+8)



support@wavlink.com

Available Mon-Fri 8:30 am-5:30pm (UTC+8)



+1 8889730883

Mon-Fri 9:00 am - 10:00 pm (UTC-5)

www.wavlink.com



**Thank you for purchasing
WAVLINK product!**

