

WAVLINK



see the world

User Manual

Universal 10G Quad 4K Docking Station

Model: WL-UG75PD3-4H

@WavlinkOfficial

@WavlinkTechSupport

Table of contents:

- About This Guide
 - Conventions
 - More Info
 - Performance Disclaimer
 - Safety Instructions
 - Copyright Statement
 - WEEE Directive & Product Disposal
- Chapter 1 Overview
 - Overview
 - Package Content
 - System Requirement
 - Product Overview
- Chapter 2 Driver Installation
 - Driver Installation
 - For Windows OS
 - For Mac OS
- Chapter 3 Connection and Resolution
 - Connection and Resolution
 - Connection
 - Cable Holder
 - Power on
 - Connecting to the Host
 - Connecting to the Monitors
 - Resolution
- Chapter 4 Display Setting
 - Display Mode Settings
 - For Windows OS
 - For Mac OS
 - For Mac OS X13
- Chapter 5 FAQ and After-sale Service
 - FAQ and After-sale Service
 - FAQ
 - After-sale Service

About This Guide

This guide serves as a companion to the Quick Installation Guide for your wired USB product. The Quick Installation Guide provides essential steps for immediate setup, while this document offers detailed explanations of product features and advanced configuration options.

Please note that product functionality may vary slightly depending on your specific model, software version, geographic region, language, and connected devices. Screenshots, parameters, and descriptions in this guide are for illustrative purposes only.

Conventions

In this guide the following conventions are used :

Convention	Description
<u>Underlined</u>	Underlined words or phrases are hyperlinks. You can click to redirect to a website or a specific section.
Teal	The content and text that needs to be emphasized on the web page is the theme color #1D428A , including menus, items, buttons, etc.
Note:	Critical reminders to prevent operational errors or functionality issues.
Tips:	Best practices or optimization suggestions for enhanced performance.

More Info

The latest driver, firmware and utilities are available from the Download Center at [WAVLINK SUPPORT](#) .

Included in your product packaging or available digitally via the link above.

If you encounter any issues, please don't hesitate to email contact@wavlink.com/techsupport@wavlink.com/postsales@wavlink.com to provide feedbacks or contact online customer service, thank you !

Performance Disclaimer

The maximum transfer speeds stated for this product are based on theoretical limits of USB specifications (e.g., USB 2.0/3.0/3.1 Gen 1/Gen 2). Actual performance may vary due to:

Device limitations: Host system performance, driver compatibility, and connected device capabilities.

Environmental factors: USB cable quality, length, electromagnetic interference, and port power delivery.

Network/software conditions: Operating system overhead, background processes, and concurrent data transfers.

Wired connections are generally more stable than wireless alternatives, but performance is not guaranteed and depends on the factors listed above.

Information in this document is subject to change without notice. The manufacturer does not make any representations or warranties (implied or otherwise) regarding the accuracy and completeness of this document and shall in no event be liable for any loss of profit or any commercial damage, including but not limited to special, incidental, consequential, or other damage.

Safety Instructions

Always read the safety instructions carefully.

Keep this Quick Start Guide for future reference.

Keep this equipment away from humidity.

If any of the following situation arises, get the equipment checked by a service technician:

☐ The equipment has been exposed to moisture.

☐ The equipment has been dropped and damaged.

☐ The equipment has an obvious sign of breakage.

☐ The equipment has not been working well or you cannot get it work according to Quick start Guide.

Copyright Statement

No part of this publication may be reproduced in any form by any means without the prior written permission.

Other trademarks or brand names mentioned herein are trademarks or registered trademarks of their respective companies.

WEEE Directive & Product Disposal

At the end of its serviceable life, this product should not be treated as household or general waste. It should be handed over to the applicable collection point for the recycling of electrical and electronic equipment, or returned to the supplier for disposal.



Chapter 1 Overview

This chapter contains the following sections :

- [Package Content](#)
- [System Requirement](#)
- [Product Overview](#)

Overview

Package Content

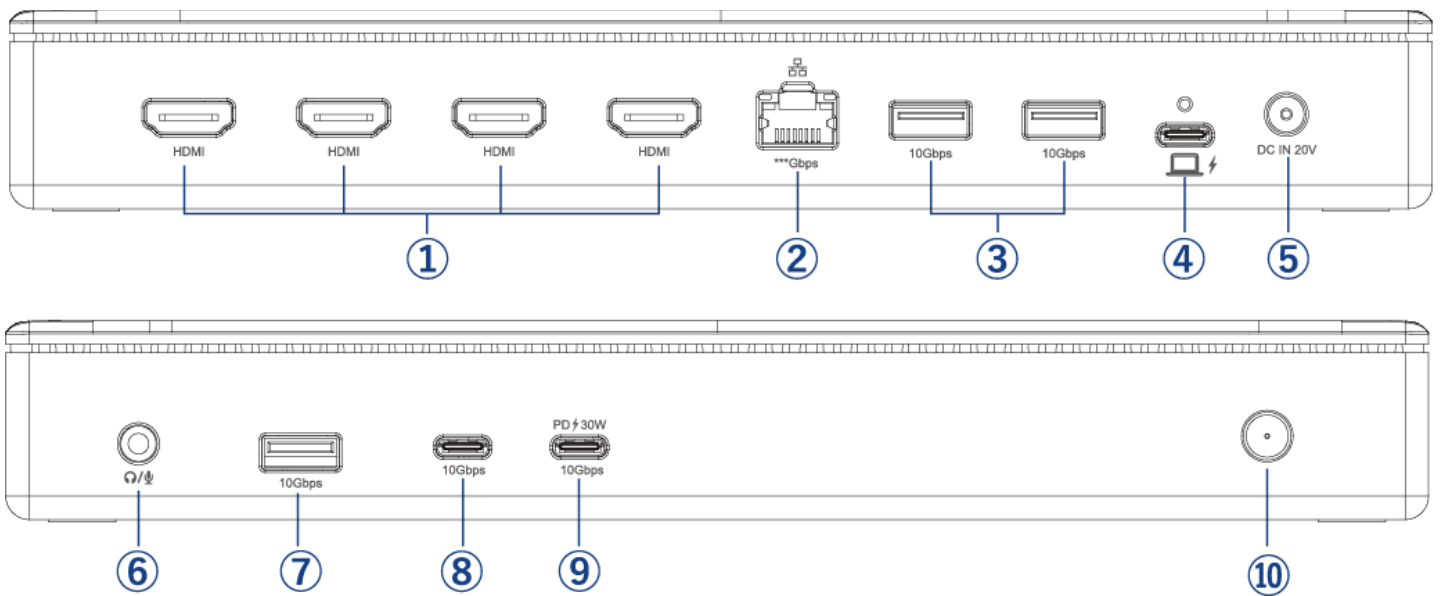
This Universal 10G Quad 4K Docking Station includes the following items, please check it before using.

- 1× Universal 10G Quad 4K Docking Station
- 1× Type-C to Type-C 10Gbps Cable with Type-C to Type-A Adapter
- 1× DC20V/8A Power Adapter
- 1× AC Power Cable
- 1× Cable Holder
- 1× Quick Start Guide

System Requirement

- Microsoft Windows 10/11
- Mac OS 11 or later
- Compatible with computers that support Thunderbolt/USB4/USB3.2/USB3.1/USB3.0/USB2.0

Product Overview



- ① **HDMI**
- ② **RJ45 Ethernet**
- ③ **USB-A 10Gbps**
- ④ **USB-C(Host, PD 100W)**
- ⑤ **DC IN 20V/8A**
- ⑥ **4-pole Audio/Mic**
- ⑦ **USB-A 10Gbps**
- ⑧ **USB-C 10Gbps**
- ⑨ **USB-C 10Gbps+30W Fast Charging**
- ⑩ **Power Switch(with Status Indicator)**

Model	Ethernet Specification
UG75PD3-4H5	5Gbps
UG75PD3-4H2	2.5Gbps
UG75PD3-4H1	1Gbps

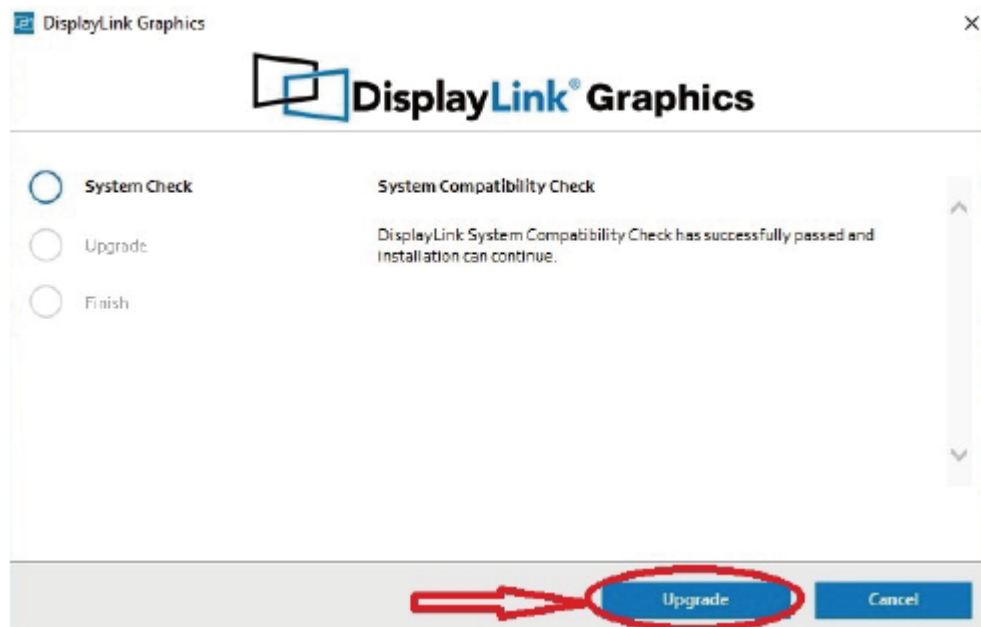
Chapter 2 Driver Installation

Driver Installation

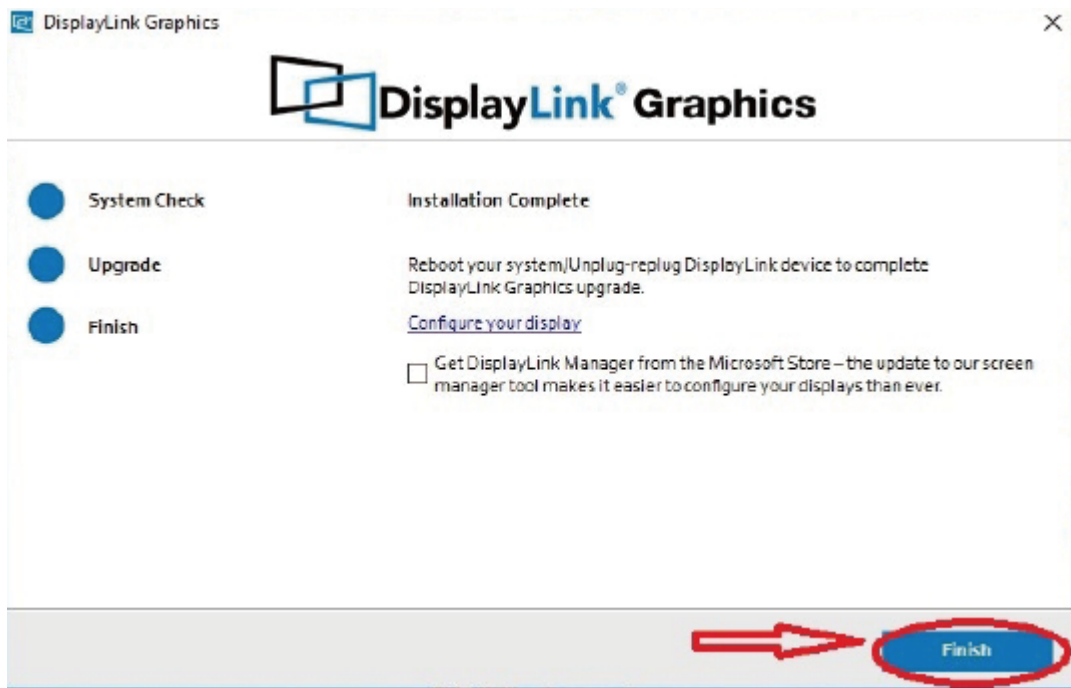
The docking station is based on DisplayLink USB graphics technology which manages the graphics function. It requires downloading and installing DisplayLink graphics driver to make it work, found here: www.wavlink.com/en_us/WL-UG75PD3-4H or www.displaylink.com

For Windows OS

1. Locate the downloaded folder and double-click the driver file you just downloaded.
2. If there is no DisplayLink Driver in your Windows computer, click **Install** and follow guide to install the Driver, if your Windows host has ever installed the Driver, open the file and then click **Upgrade**.

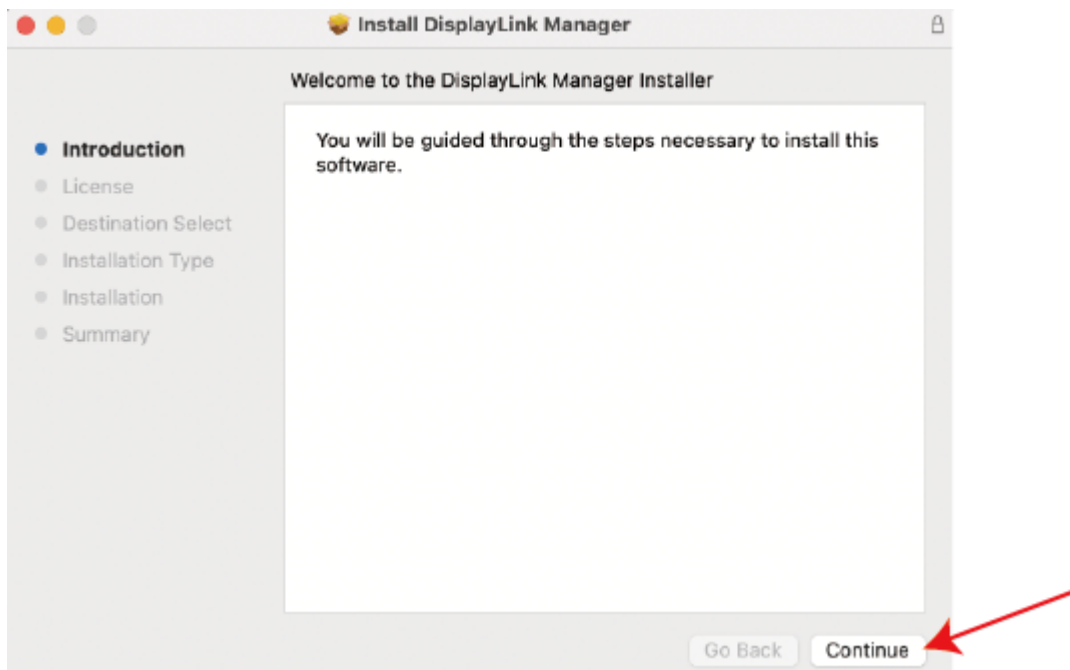


3. Please wait patiently for the complete of the installation. After finishing installation, click **Finish**.

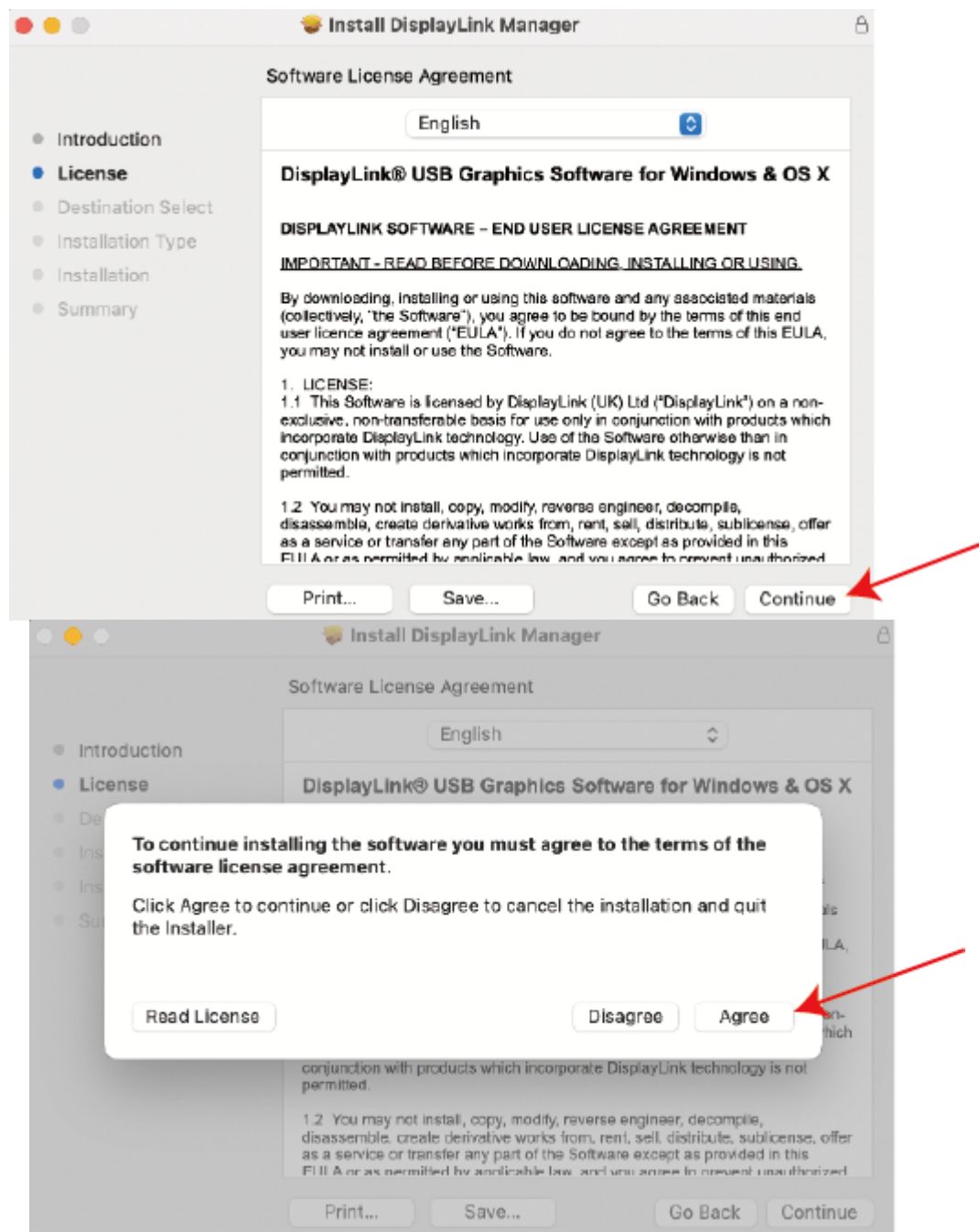


For Mac OS

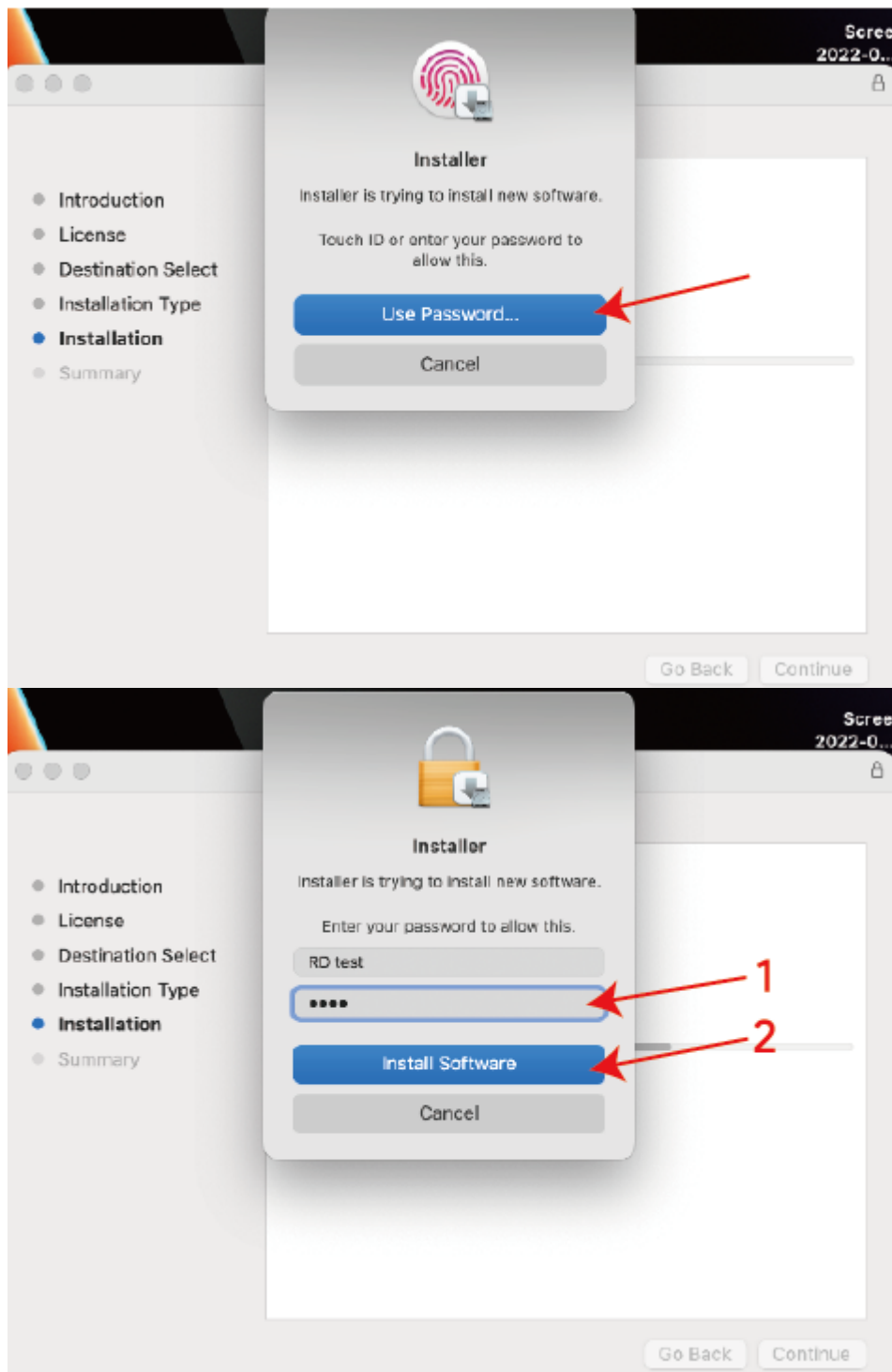
1. Double-click the driver file you just downloaded, navigate to the Install DisplayLink Manager window, click **Continue**.



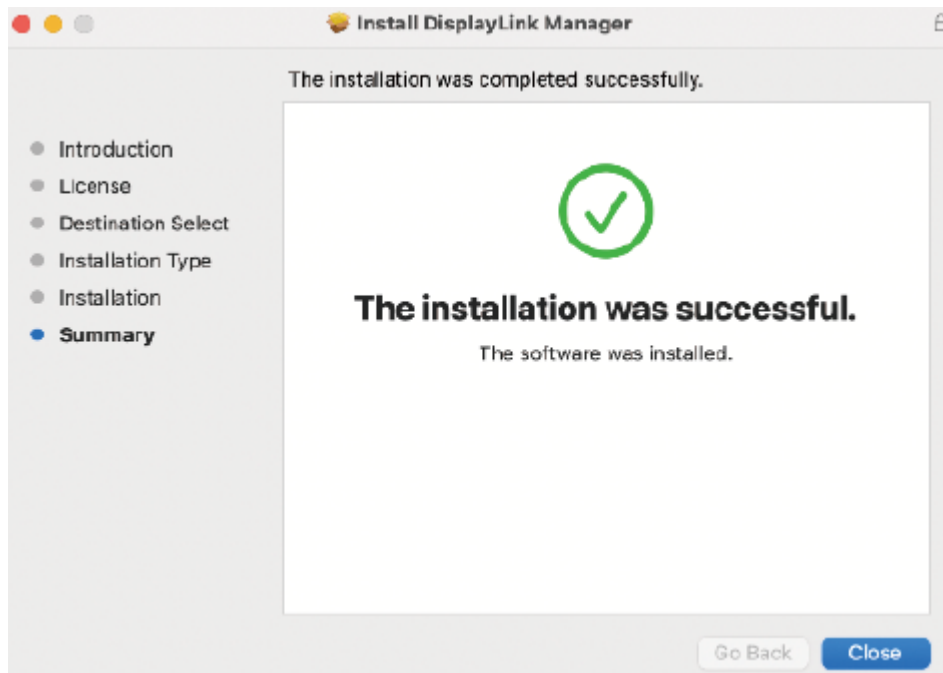
2. Click **Continue** to the next window, then click **Agree**.



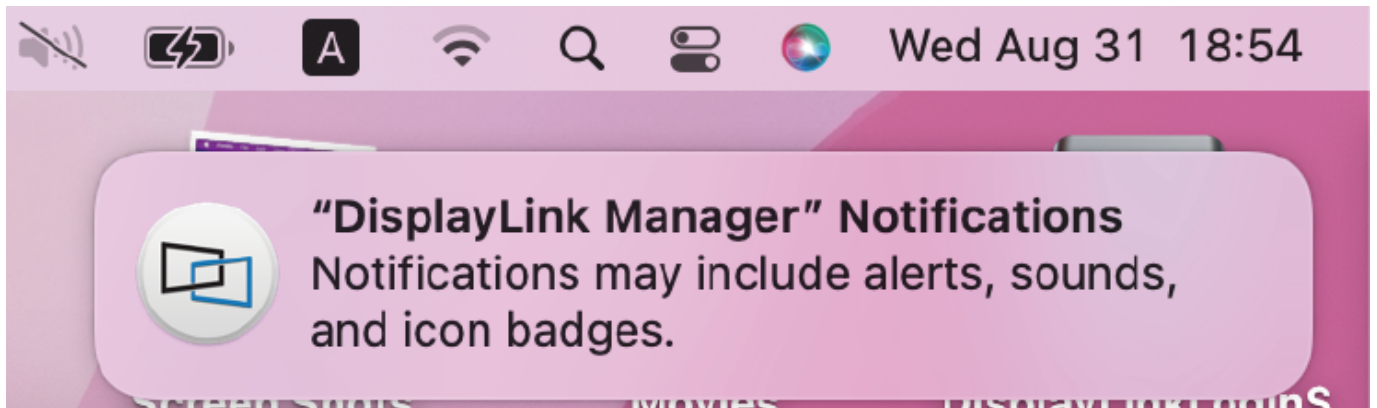
3. Click **Install** and choose **Use Password..**, then enter the screen password and click **Install Software**.



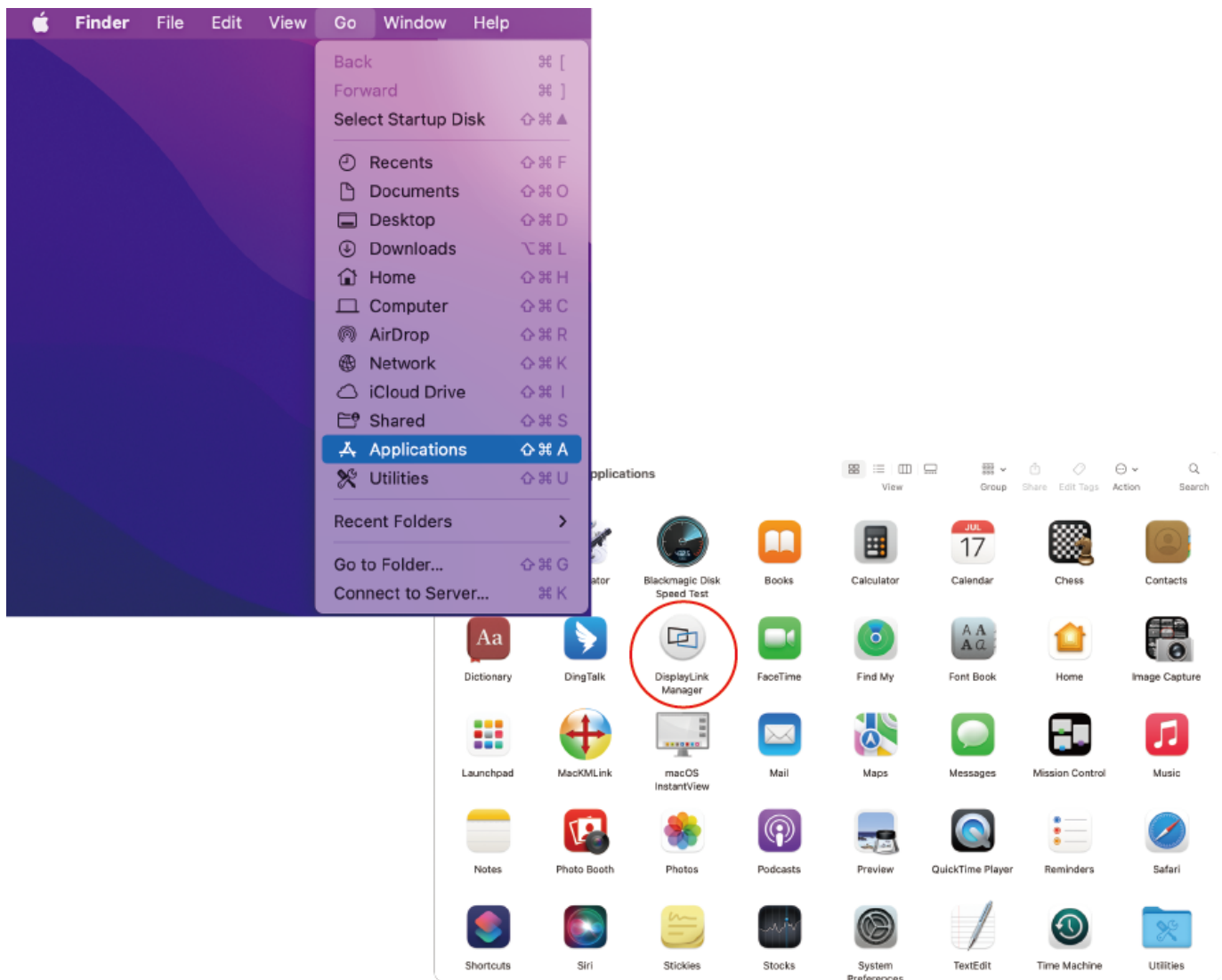
4. Please wait patiently for the installation to complete, then click **Close**.



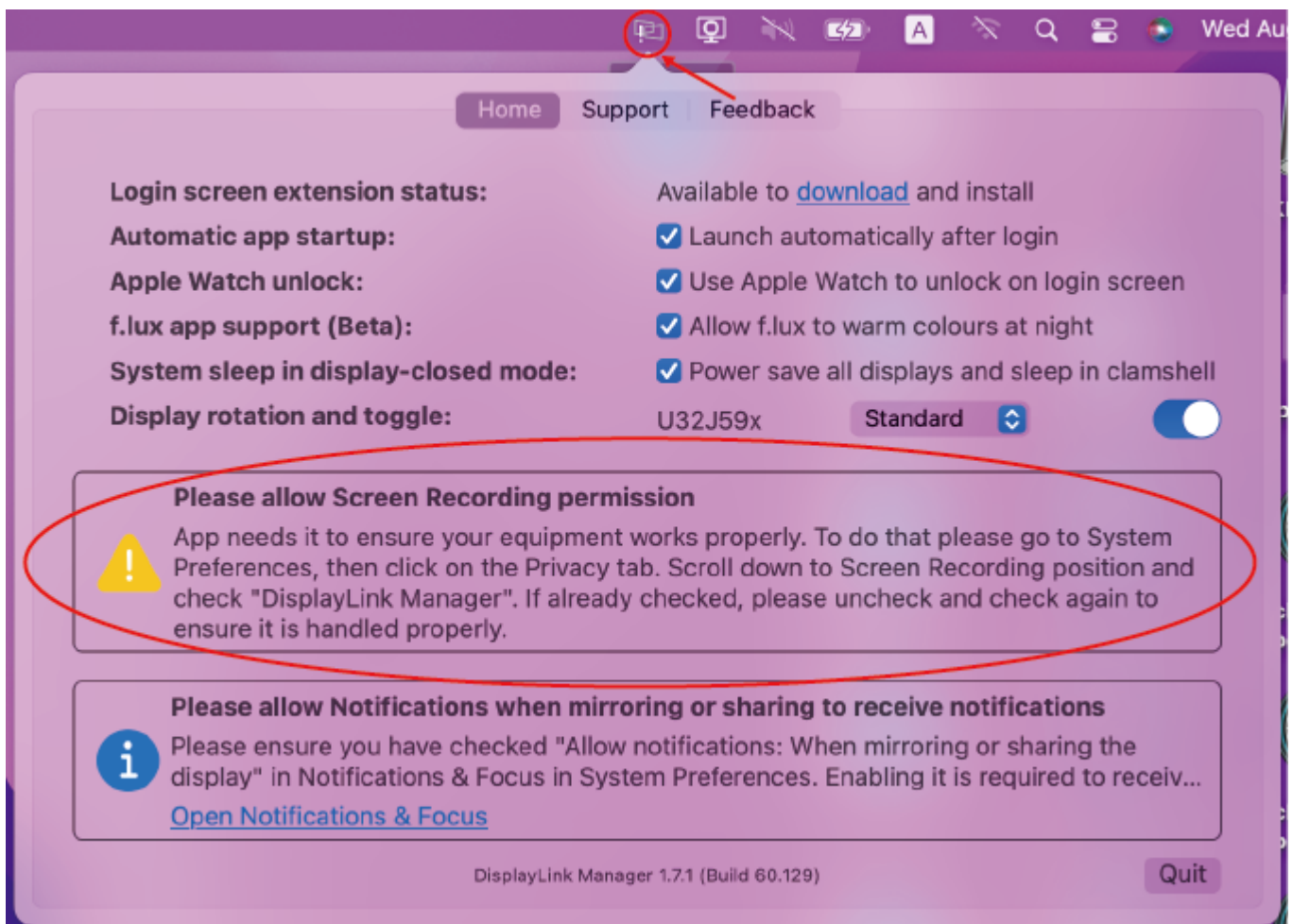
5. If you have enabled notifications from DisplayLink Manager, it will remind you to allow screen recording when it detects that this permission is missing.



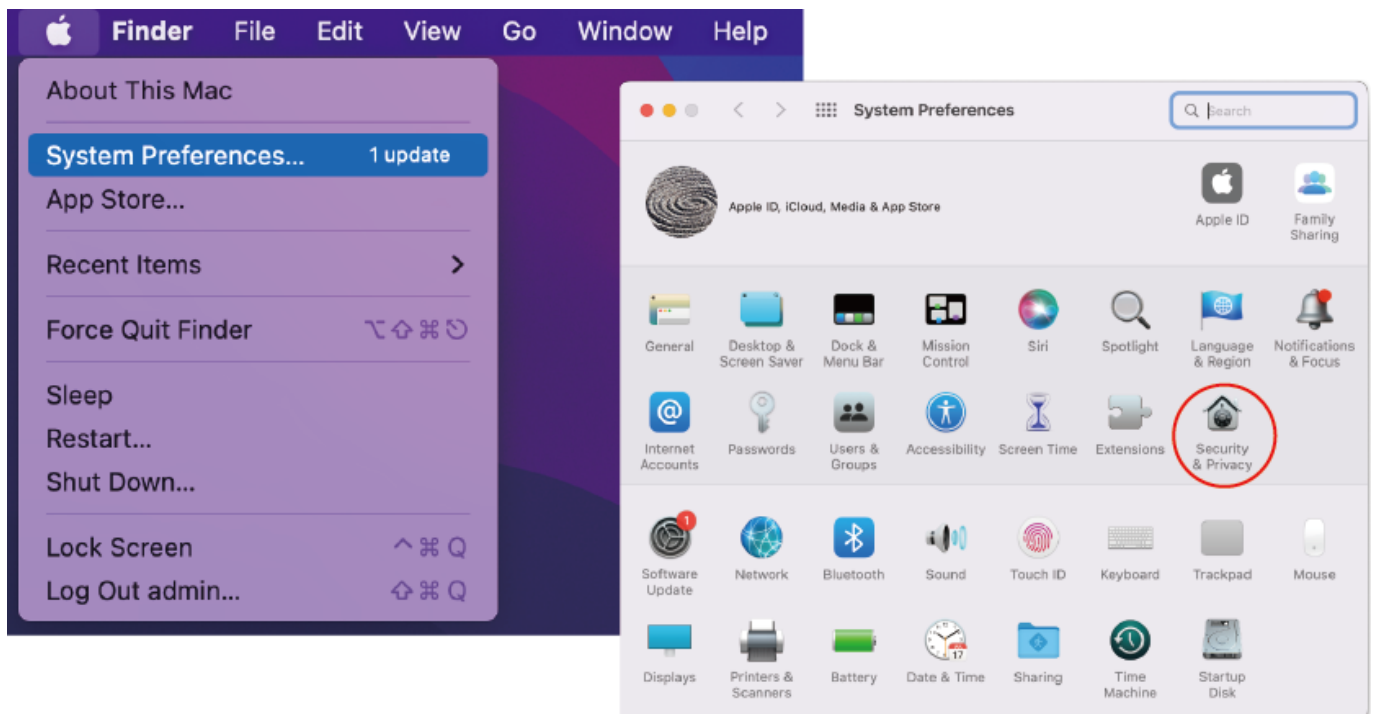
6. If you didn't get the notification from DisplayLink Manager, please click **Go** in the function bar at the top left of screen, then select **Applications** and click **DisplayLink Manager**.



7. Click the **DisplayLink Graphics** icon in the function bar at the top right of the screen, and the notification will also appear in the DisplayLink Manager window. A warning is found here, you should allow the screen recording permission for **DisplayLink Manager**.



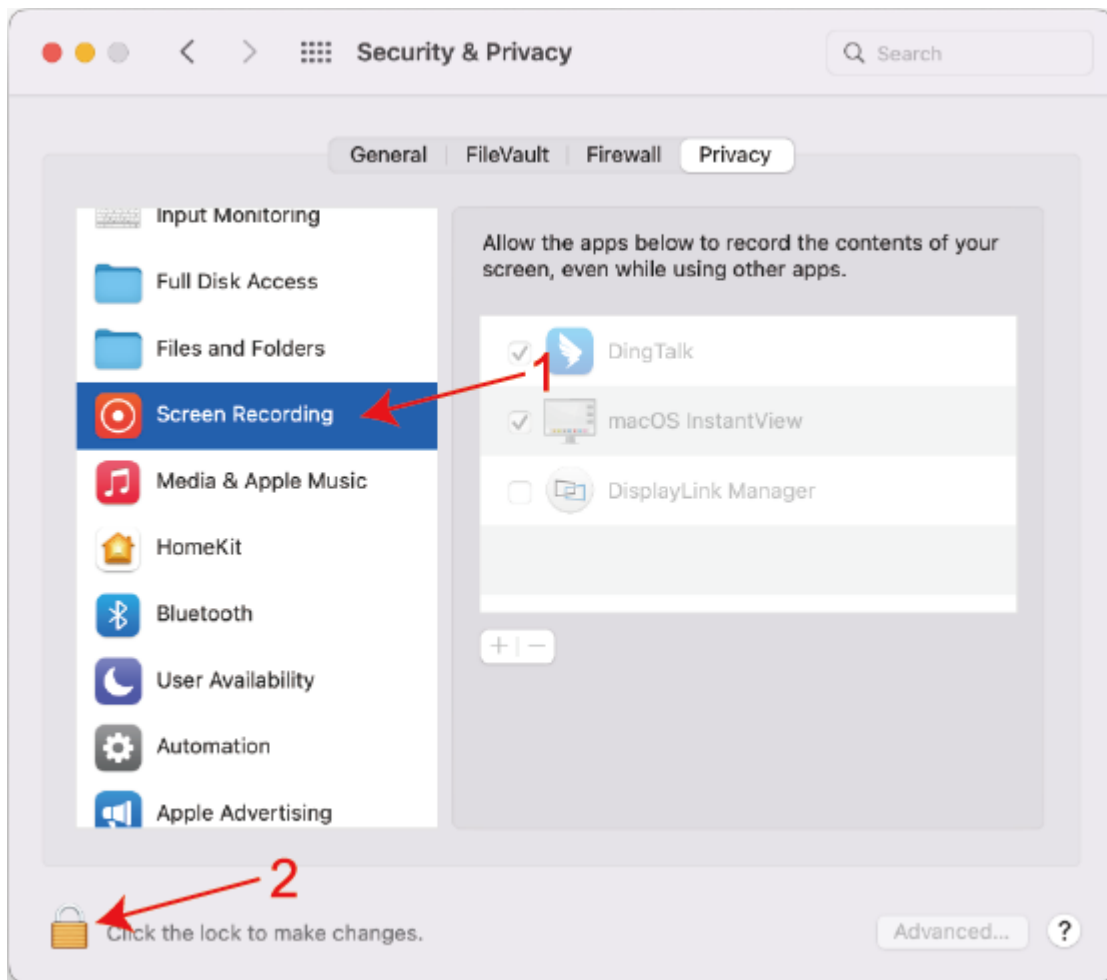
8. Click the **Apple** icon and select **System Preferences**, then double click **Security & Privacy**.



9. Enable **Screen Recording** to allow the **DisplayLink Manager** application to capture pixels and send them to your USB peripheral:

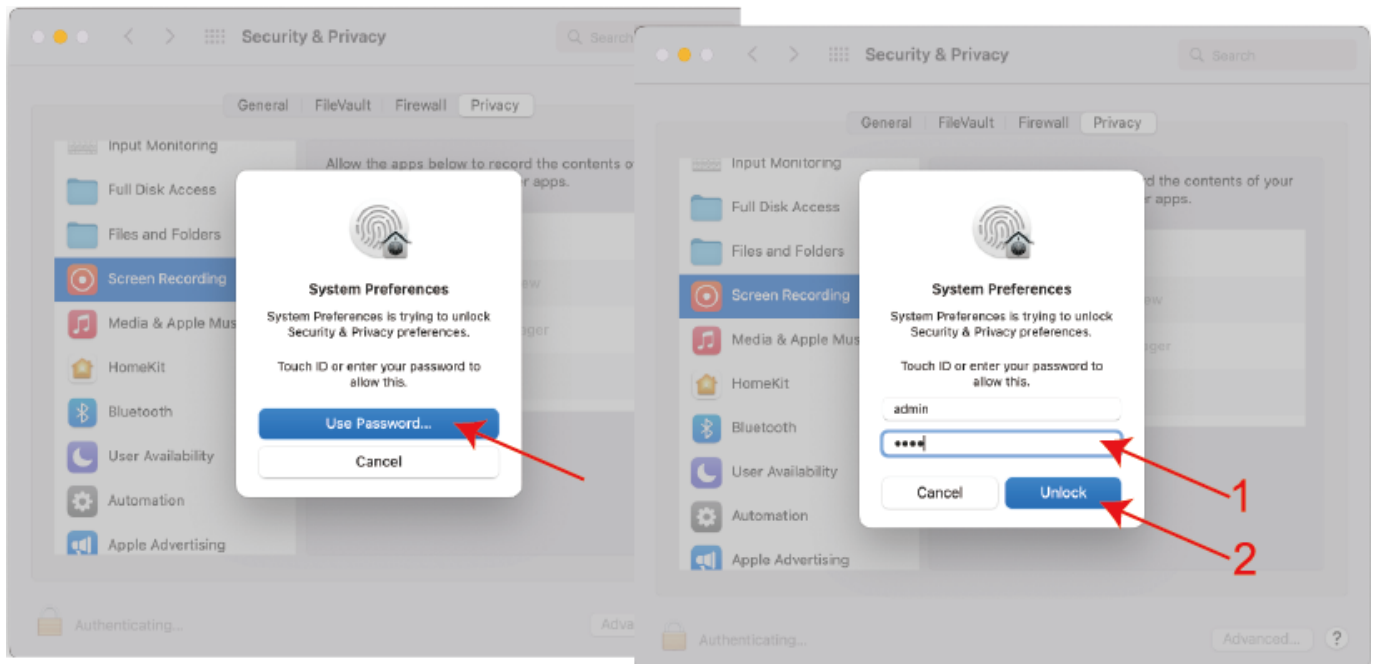
9.1 Select **Screen Recording** in **Privacy** tab.

9.2 Click the lock icon at the bottom left of the window to unlock.



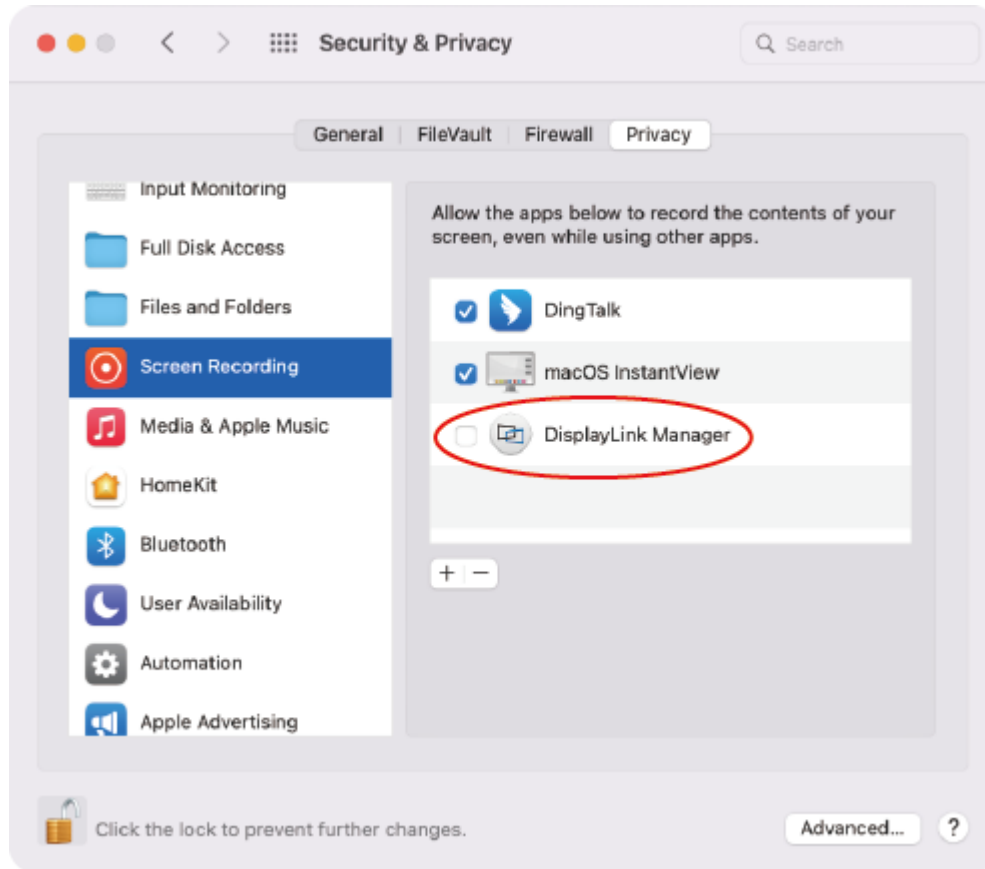
10. When the small window pops up, choose a password or use your fingerprint to unlock.

10.1 If you use password to unlock, and click **Use Password**, then enter your password and choose **Unlock**.

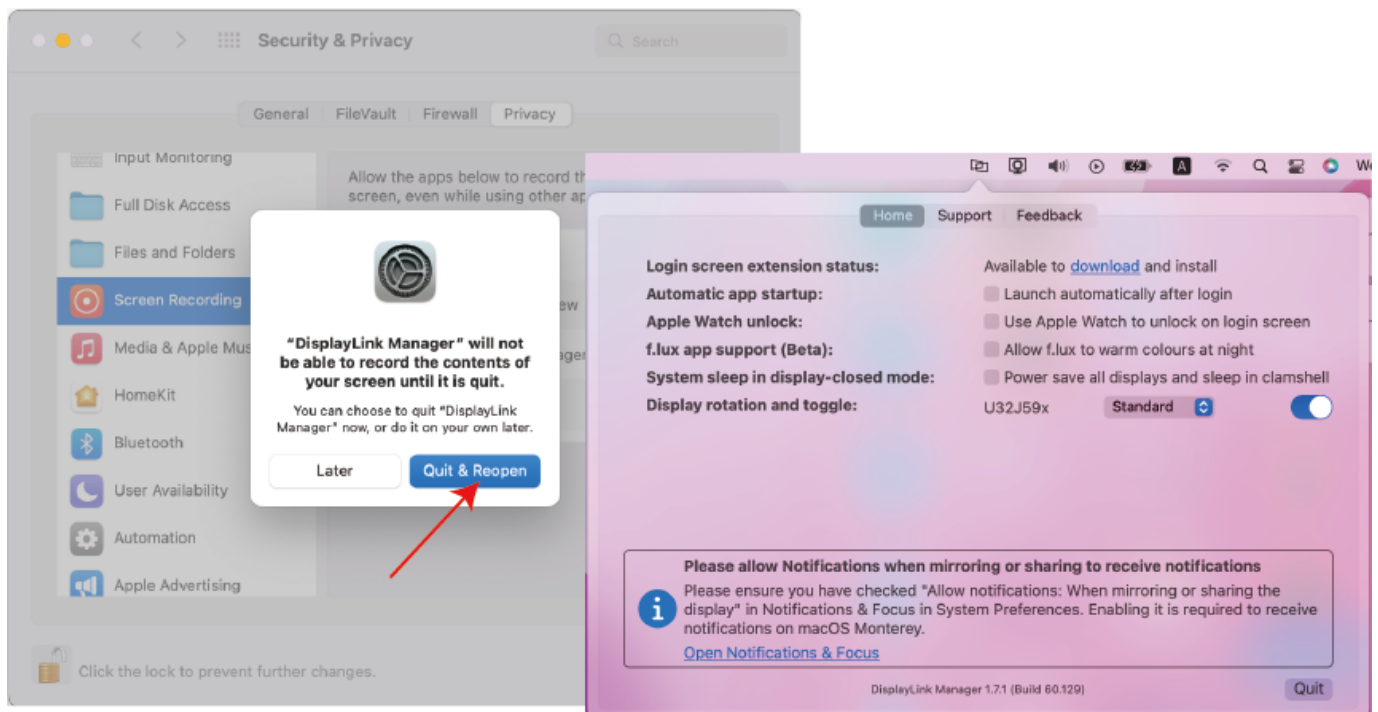


10.2 If you use fingerprint to unlock, it will jump directly to the next step.

11. Check the **DisplayLink Manager** in the right list.



12. Click **Quit & Reopen** to restart the driver, then you can click the **DisplayLink Graphics** icon in the function bar at the top right of the screen to ensure whether the warning has been lifted and whether the driver can work properly.



Note: Please keep DisplayLink Manager running in programs list of Mac OS so that the HDMI port of the Dock can display properly.

Chapter 3 Connection and Resolution

This chapter contains the following sections :

- [Connection](#)
- [Resolution](#)

Connection and Resolution

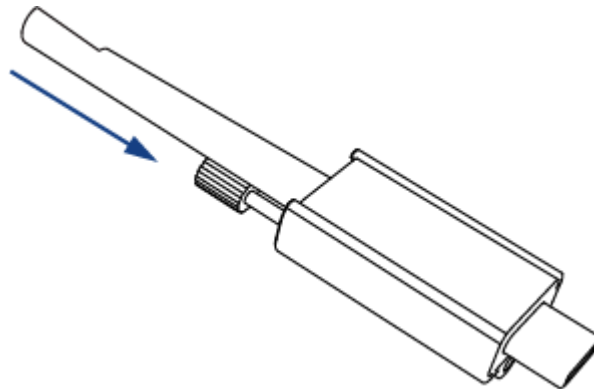
Connection

Before connecting to use, please ensure the host laptop has installed the corresponding drivers.

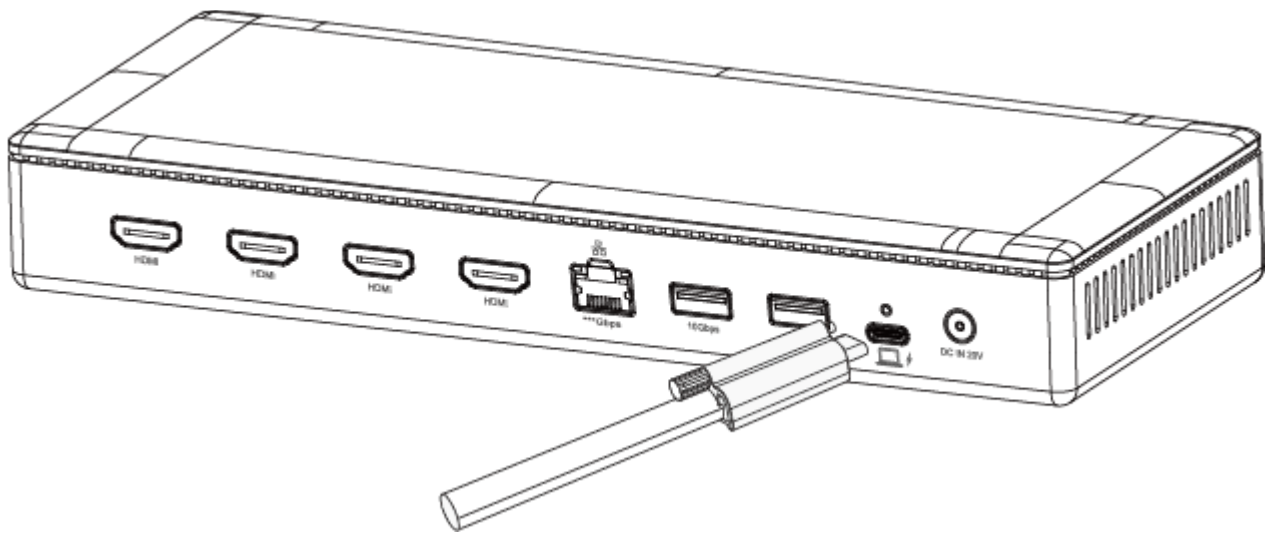
Cable Holder

The cable holder is designed to tighten the USB-C cable. If you are worried that the USB-C cable might loosen, please follow the following steps to install the cable holder to the dock.

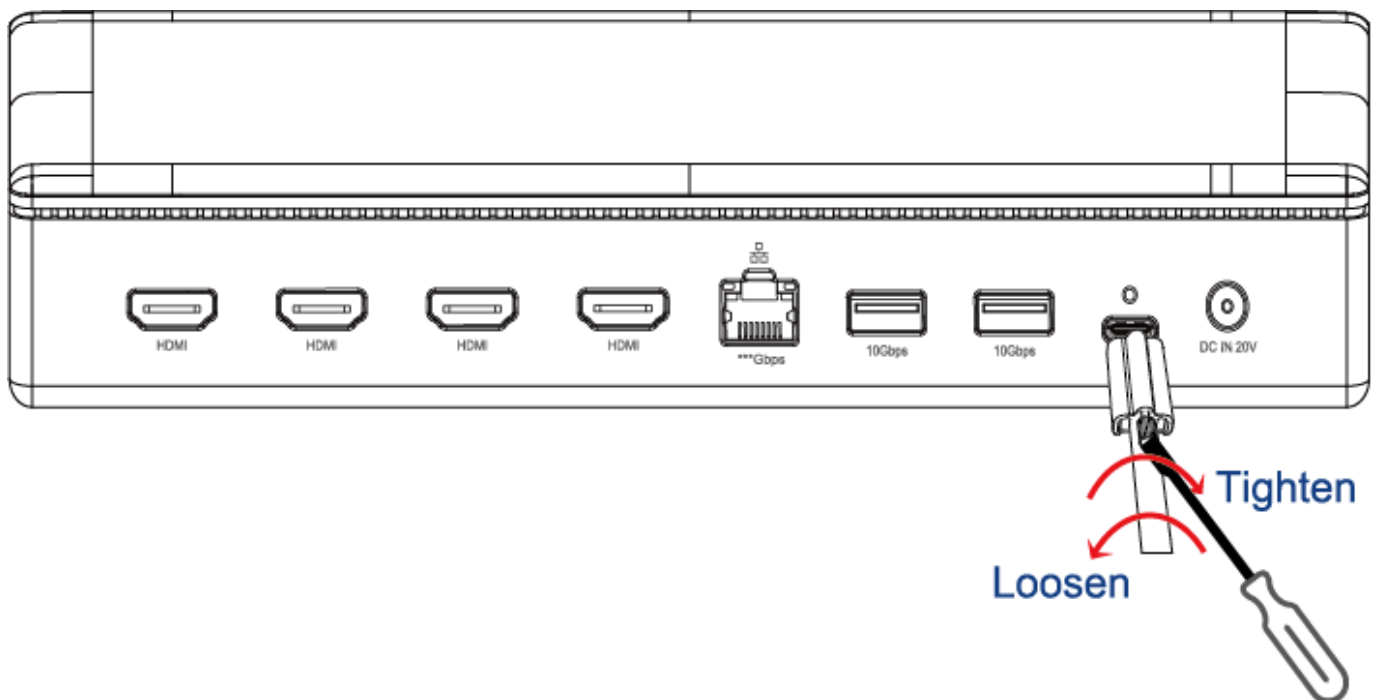
1. Insert the cable into the cable holder according to the arrow direction.



2. Align the bolt with the fixing hole, then please connect it to the upstream USB-C Host port.



3. Tighten the screw on the cable holder to secure the cable, you can use a screwdriver as shown, tighten clockwise or loosen and remove counter-clockwise.

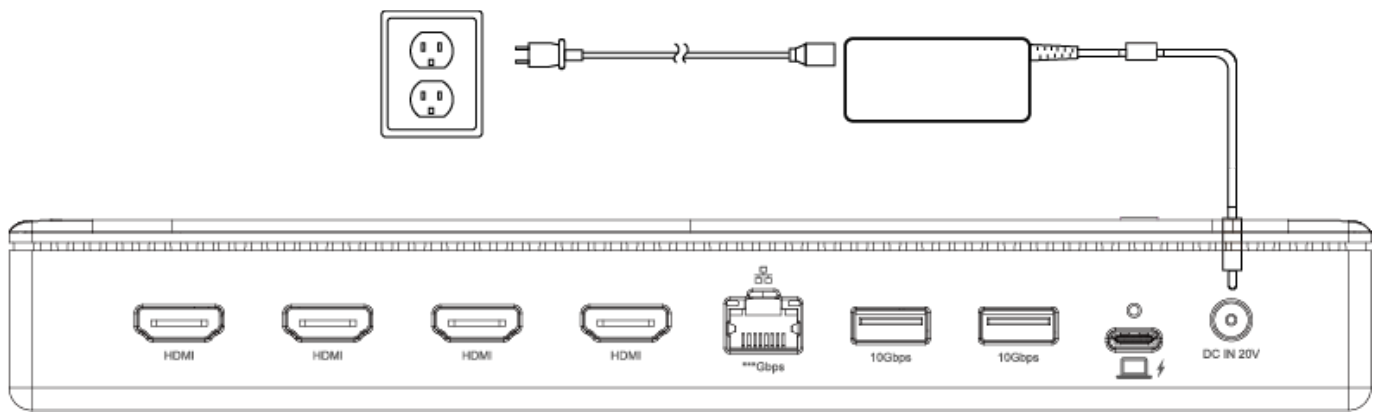


i NOTE

- Control the force during operation to avoid damaging the screw.
- The Cable Holder just is used for fixing the cable to prevent accidental touch and loosening. After assembling it, please do not pull it hard to avoid damage to the interface. Please follow the above instructions if you need to disassemble it.

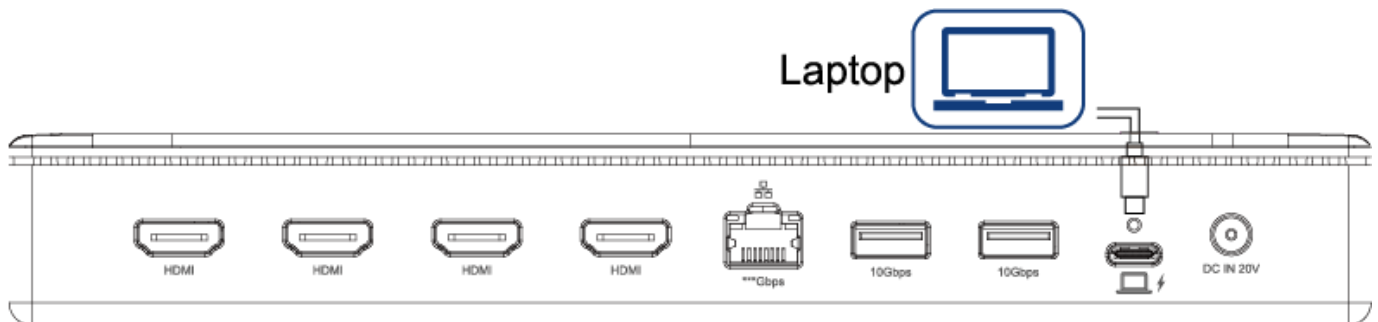
Power on

1. Plug one end of the included Power Adapter into this Dock's DC IN 20V port and the other end into the power outlet.



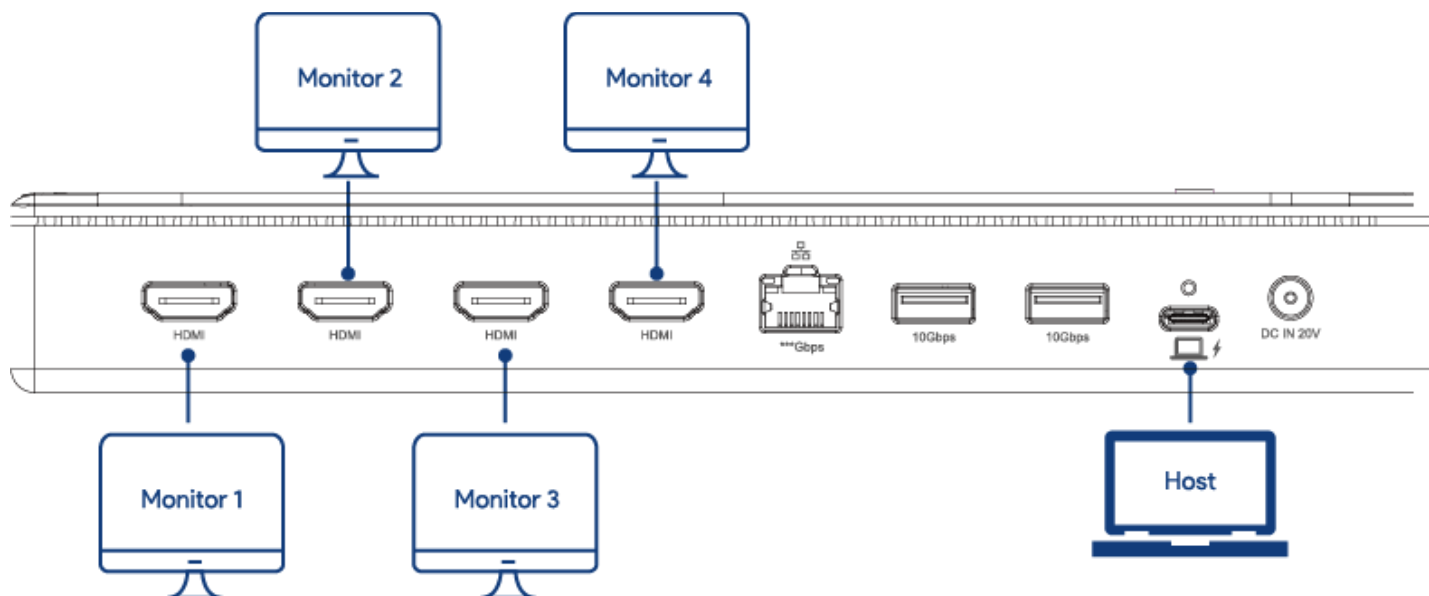
Connecting to the Host

1. Use the provided USB-C cable to connect the USB-C Host port on the Docking Station to the USB-A/USB-C/Thunderbolt port on your laptop.
2. The power switch on the docking station is used to turn on/off the dock. In the initial state, when there is no host connected, the power indicator light on the docking station will display red.
3. After successfully connecting the docking station to your laptop, the power indicator will turn green, indicating a successful connection to the Host.



Connecting to the Monitors

This docking station can connect up to four displays.



Resolution

Single Display

HDMI	HDMI	HDMI	HDMI
3840×2160@60Hz	/	/	/
/	3840×2160@60Hz	/	/
/	/	3840×2160@60Hz	/
/	/	/	3840×2160@60Hz

Dual Display

HDMI	HDMI	HDMI	HDMI
3840×2160@60Hz	3840×2160@60Hz	/	/
3840×2160@60Hz	/	3840×2160@60Hz	/
3840×2160@60Hz	/	/	3840×2160@60Hz
/	3840×2160@60Hz	3840×2160@60Hz	/
/	3840×2160@60Hz	/	3840×2160@60Hz
/	/	3840×2160@60Hz	3840×2160@60Hz

Triple Display

HDMI	HDMI	HDMI	HDMI
3840×2160@60Hz	3840×2160@60Hz	3840×2160@60Hz	/
3840×2160@60Hz	3840×2160@60Hz	/	3840×2160@60Hz
/	3840×2160@60Hz	3840×2160@60Hz	3840×2160@60Hz

Quad Display

HDMI	HDMI	HDMI	HDMI
3840×2160@60Hz	3840×2160@60Hz	3840×2160@60Hz	3840×2160@60Hz

Note:

- The resolution and refresh rate provided above are based on factory testing and is the maximum value from USB3.1 Gen2 10Gbps port of the host, and may vary depending on the specification of the host and monitors such as the USB port for data transferring, GPU/CPU, software/hardware and so on.

Chapter 4 Display Setting

This chapter contains the following sections :

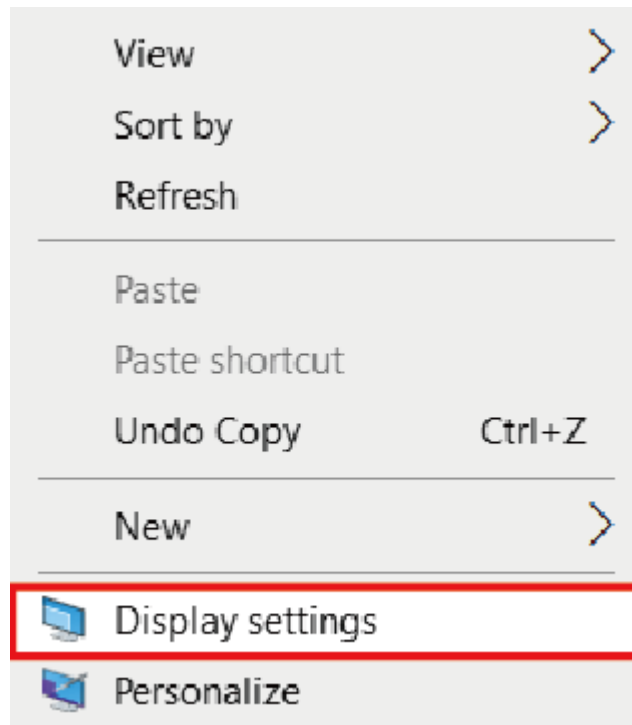
- [For Windows OS](#)
- [For Mac OS](#)
- [For Mac OS X13](#)

Display Mode Settings

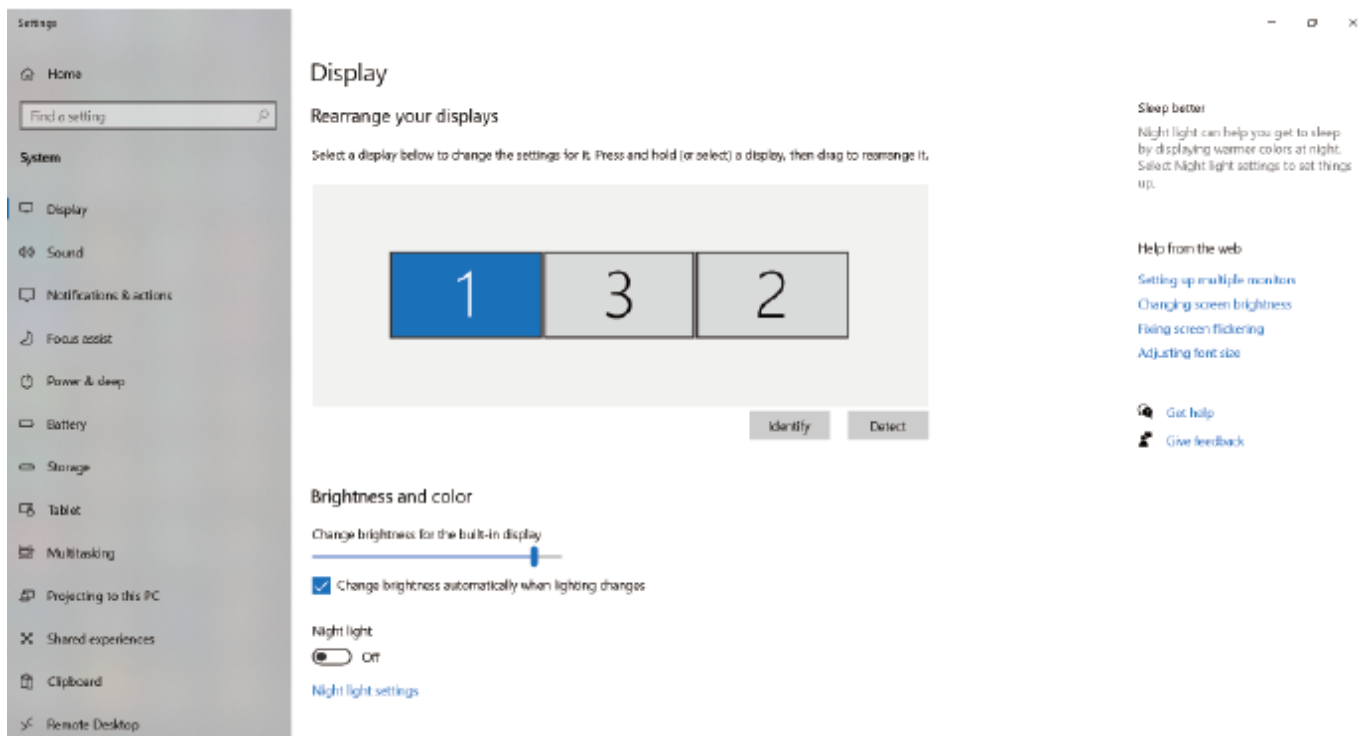
Before configuring the settings, please make sure this docking station has been connected to your laptop and monitors correctly.

For Windows OS

1. Right-click and select **Display settings**.

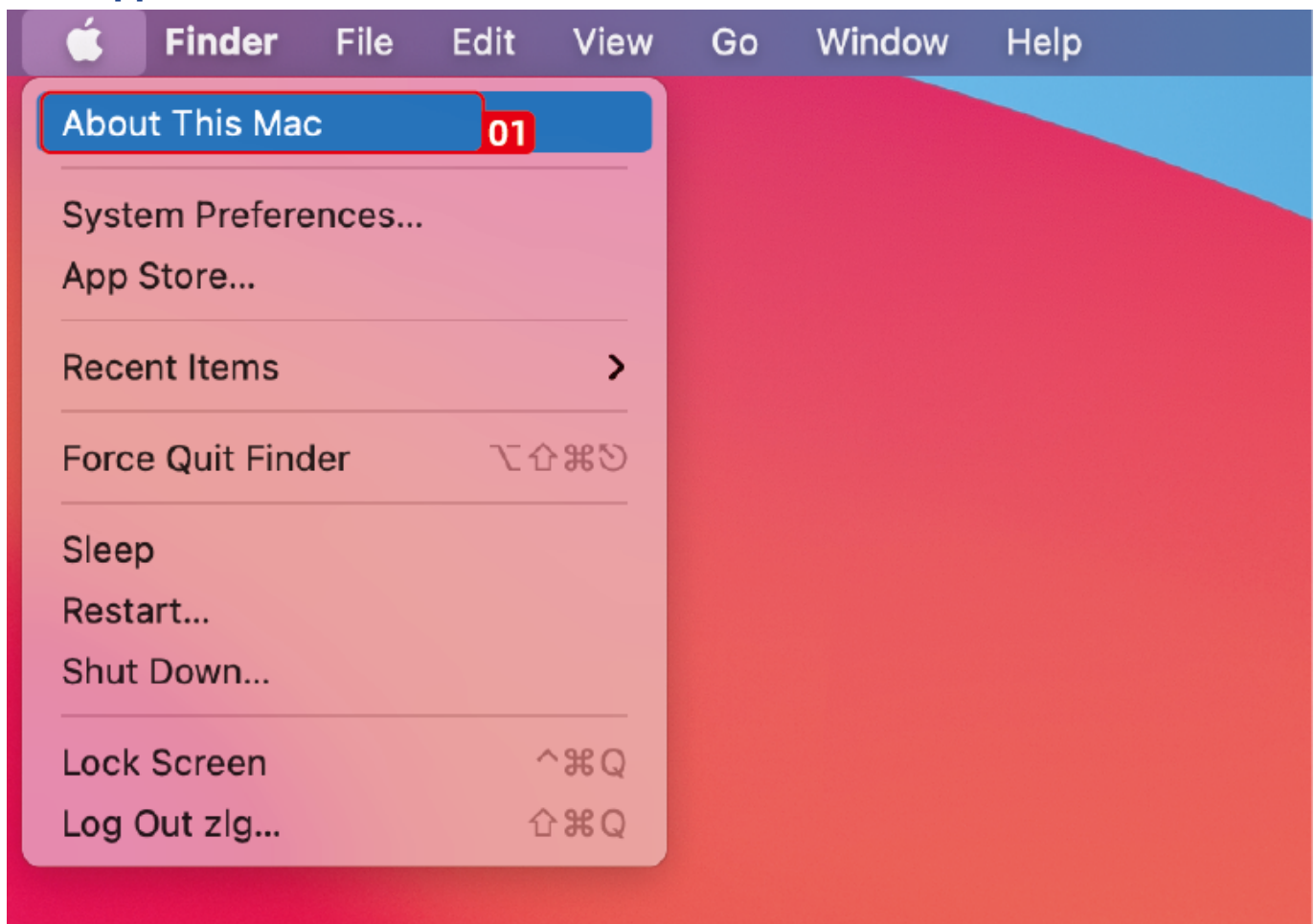


2. In **Display**, you can enjoy different operations of duplicating, extending and rotating on your monitors.

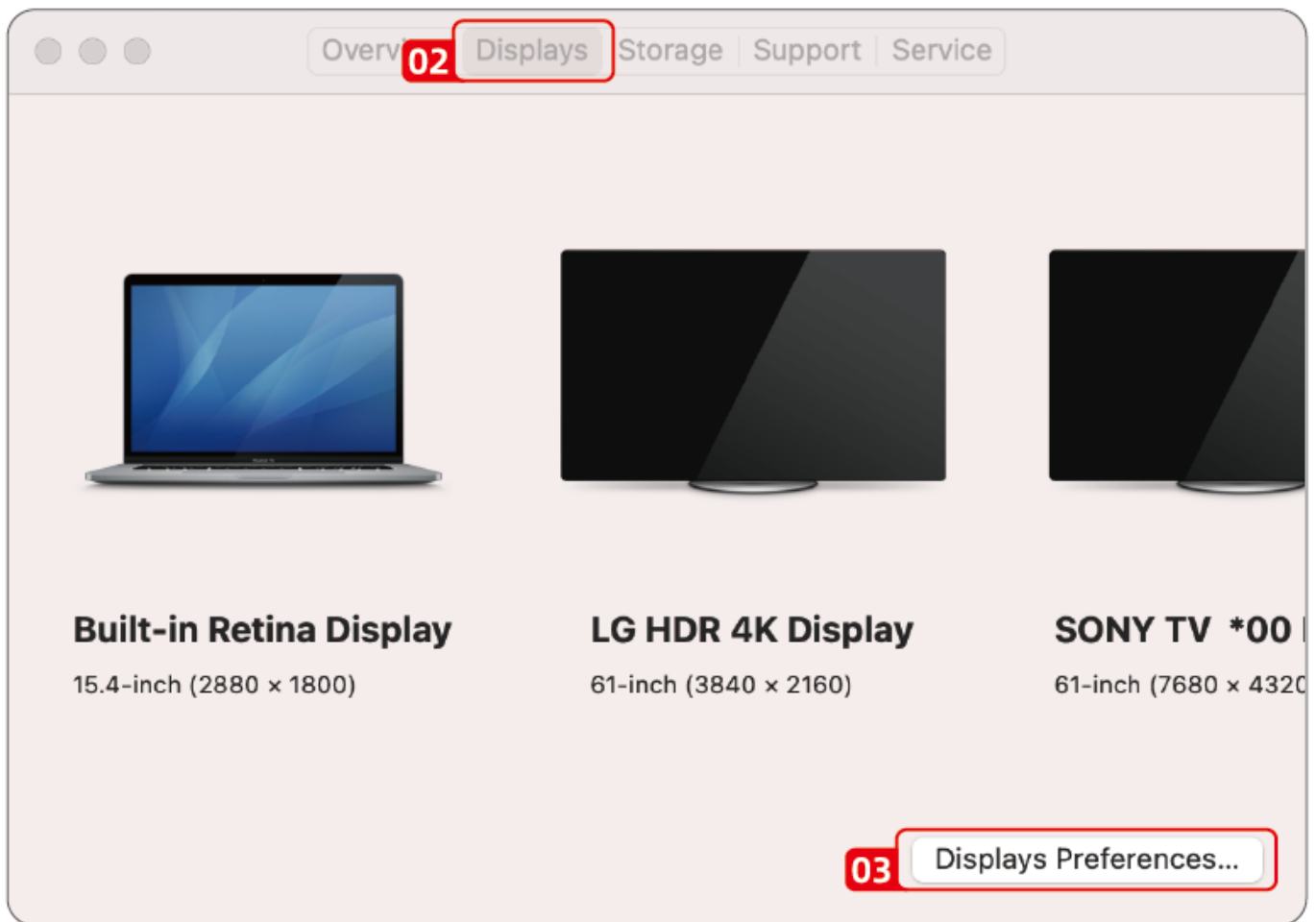


For Mac OS

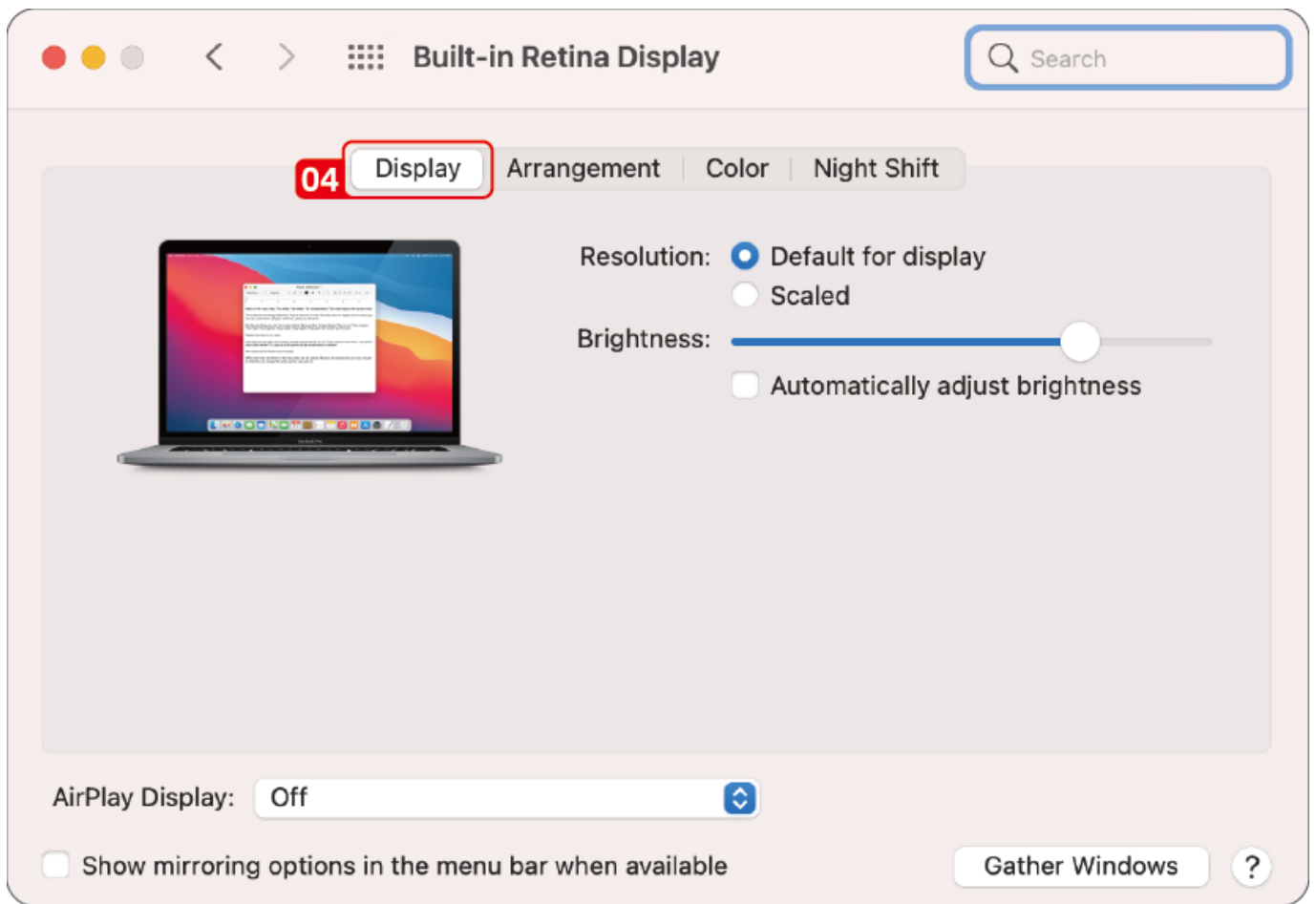
1. Click **Apple** icon, then select **About This Mac**.



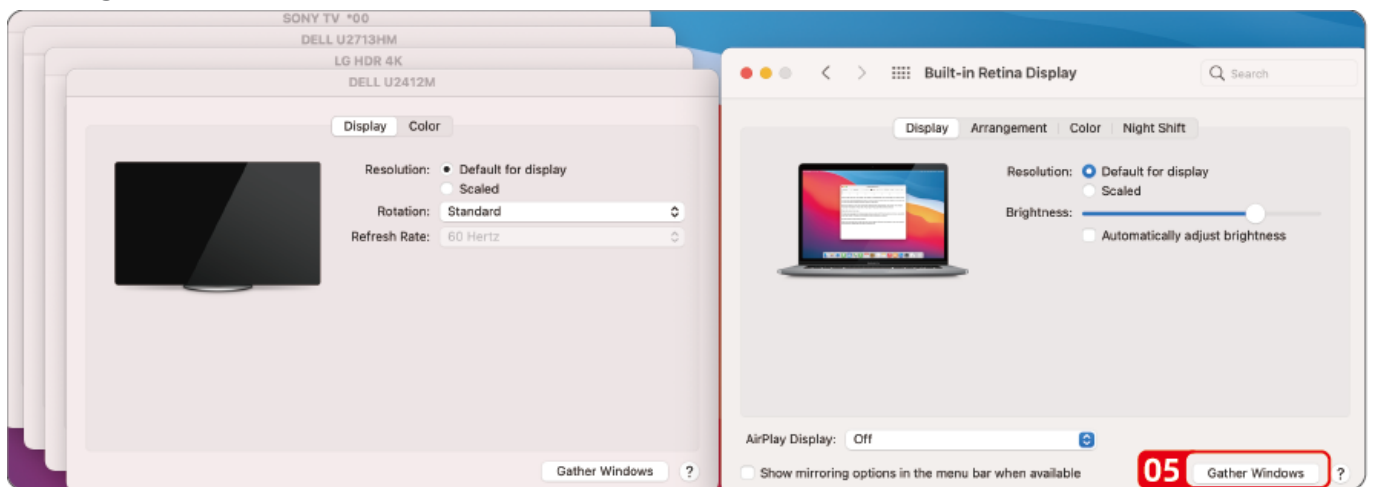
2. Click **Displays**, then select **Displays Preferences**.



3. Select **Displays** from the list, then you can enjoy different operations of mirroring, expanding and rotating on your monitors.

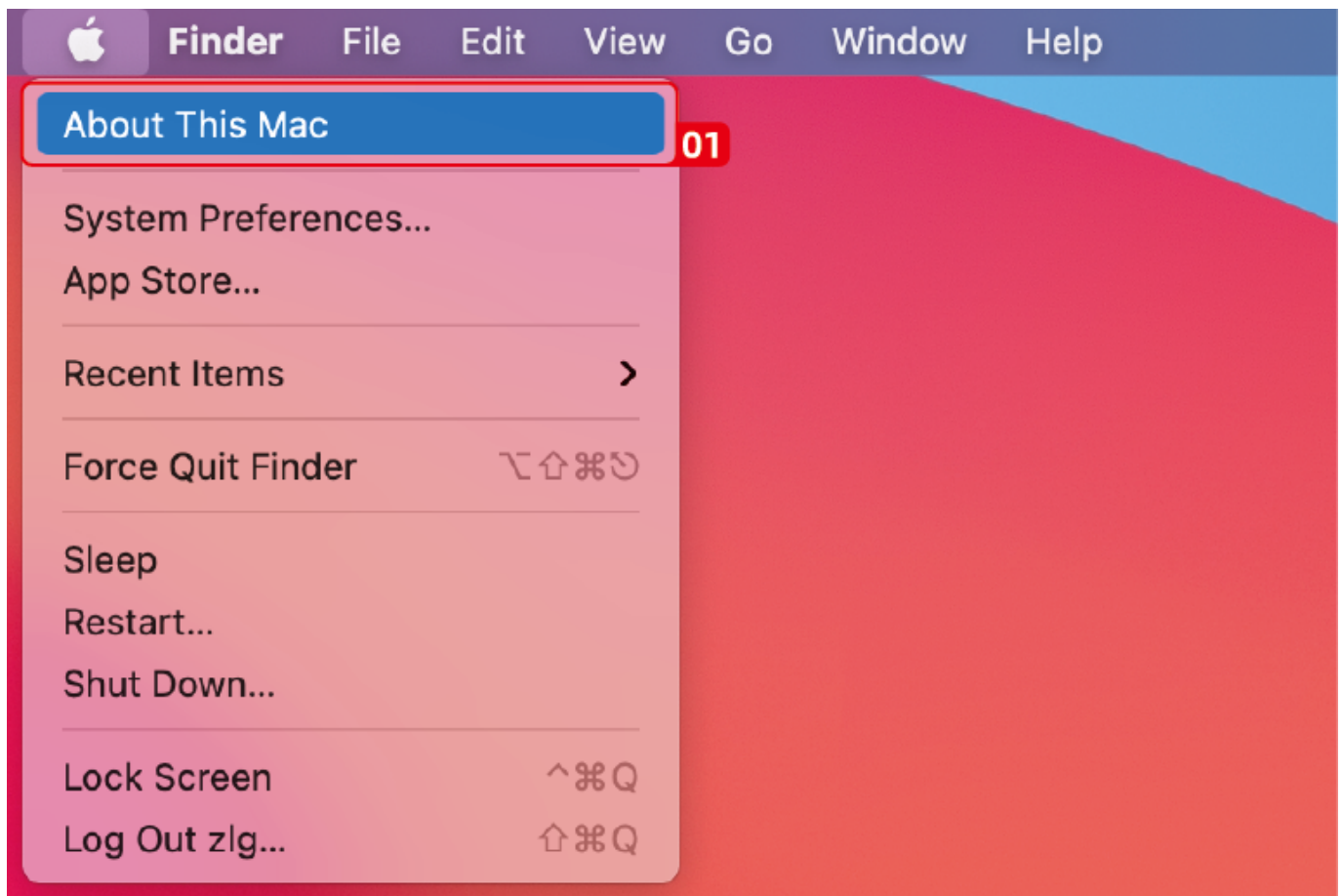


4. Or click **Gather Windows** to gather all connected displays and make separate settings.



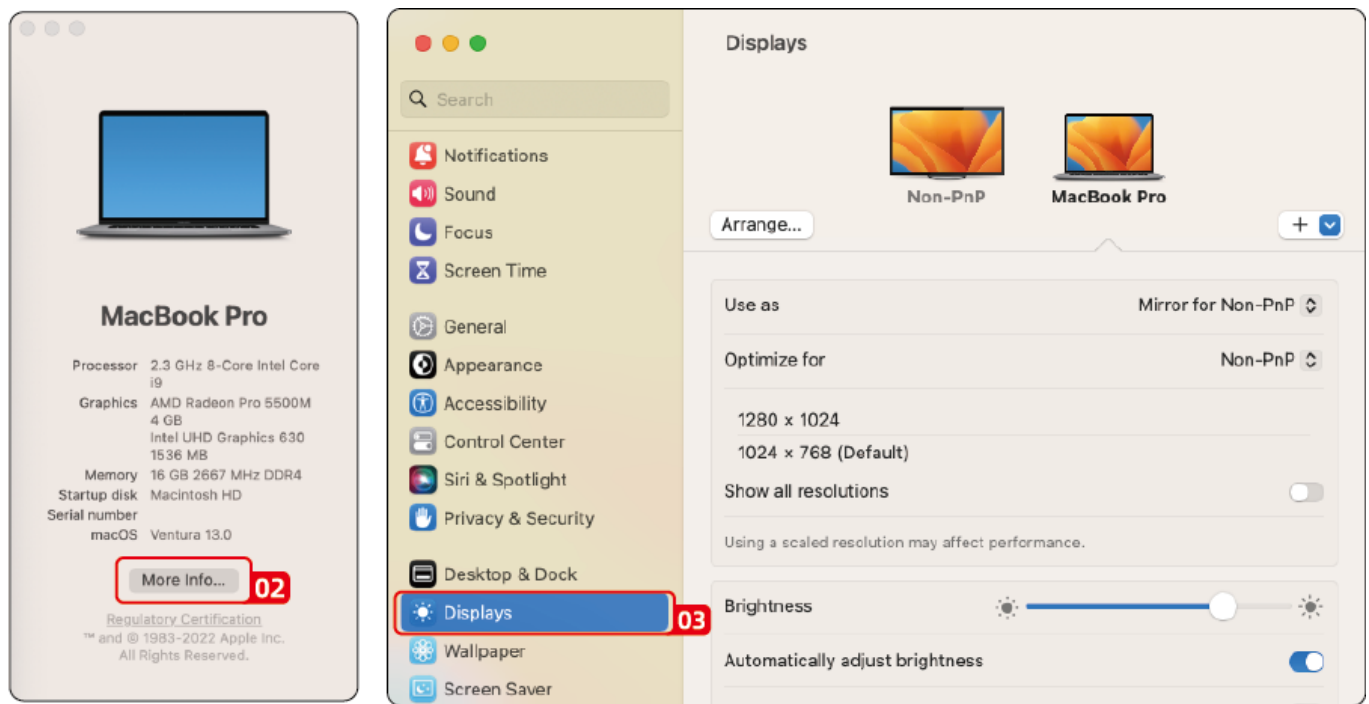
For Mac OS X13

1. Click **Apple** icon, then select **About This Mac**.



2. Click **More Info....**

3. Select **Displays** from the list, then you can enjoy different operations of mirroring, expanding and rotating on your monitors.



Chapter 5 FAQ and After-sale Service

This chapter contains the following sections :

- [FAQ](#)
- [After-sale Service](#)

FAQ and After-sale Service

FAQ

Q1. Why when I install the app for my Macbook, the App want to record my screen?

A1: Mac OS requires the user to permit **Screen Recording** for DisplayLink driver to work properly. But the DisplayLink Manager will not send any information to the wavlink and the displaylink/synaptics. Please do not worry about that.

Q2. Why the apple tv, hulu, netflix could not play when the docking is connected?

A2. The docking could not support hdcp, the protected content such as apple tv, hulu, netflix could not play when the docking is connected. And it is as expected. Please disconnect the docking when you are playing these video. Or you could also try to use the Chrome browser to watch these video and disable the Hardware Acceleration.

After-sale Service

Need help?

We're here for you!



Online support: [wavlink.com](https://www.wavlink.com)

Available Mon-Fri 8:30 am-5:30pm (UTC+8)



support@wavlink.com

Available Mon-Fri 8:30 am-5:30pm (UTC+8)



+1 8889730883

Mon-Fri 9:00 am - 10:00 pm (UTC-5)

www.wavlink.com



**Thank you for purchasing
WAVLINK product!**

