

WAVLINK

see the world

**USB 3.0 Dual-Display Universal
Docking Station**

Model: WL-UG49DK4V

@WavlinkOfficial

@WavlinkTechSupport

Table of contents:

- About This Guide
 - Conventions
 - More Info
 - Performance Disclaimer
 - Safety Instructions
 - Copyright Statement
 - WEEE Directive & Product Disposal
- Chapter 1 Product Basic Info
 - OVERVIEW
- Chapter 2 How to Use
 - HOW TO USE
- Chapter 3 Display
 - DISPLAY RESOLUTION
 - DRIVER INSTALLATION
 - For Windows
 - For macOS
 - DISPLAY SETTING
 - For Windows User
 - For macOS User
- Chapter 4 FAQ and Aftersale Service
 - FAQ
 - Q1: Why when I install the App for my MacBook, the App want to record my screen?
 - Q2: Why the apple tv, hulu, netflix could not play when the docking is connected?
 - AFTERSALE SERVICE

About This Guide

This guide serves as a companion to the Quick Installation Guide for your wired USB product. The Quick Installation Guide provides essential steps for immediate setup, while this document offers detailed explanations of product features and advanced configuration options.

Please note that product functionality may vary slightly depending on your specific model, software version, geographic region, language, and connected devices. Screenshots, parameters, and descriptions in this guide are for illustrative purposes only.

Conventions

In this guide the following conventions are used :

Convention	Description
<u>Underlined</u>	Underlined words or phrases are hyperlinks. You can click to redirect to a website or a specific section.
Teal	The content and text that needs to be emphasized on the web page is the theme color #1D428A , including menus, items, buttons, etc.
Note:	Critical reminders to prevent operational errors or functionality issues.
Tips:	Best practices or optimization suggestions for enhanced performance.

More Info

The latest driver, firmware and utilities are available from the Download Center at [WAVLINK SUPPORT](#) .

Included in your product packaging or available digitally via the link above.

If you encounter any issues, please don't hesitate to email contact@wavlink.com / techsupport@wavlink.com / postsales@wavlink.com to provide feedbacks or contact online customer service, thank you !

Performance Disclaimer

The maximum transfer speeds stated for this product are based on theoretical limits of USB specifications (e.g., USB 2.0/3.0/3.1 Gen 1/Gen 2). Actual performance may vary due to:

Device limitations: Host system performance, driver compatibility, and connected device capabilities.

Environmental factors: USB cable quality, length, electromagnetic interference, and port power delivery.

Network/software conditions: Operating system overhead, background processes, and concurrent data transfers.

Wired connections are generally more stable than wireless alternatives, but performance is not guaranteed and depends on the factors listed above.

Information in this document is subject to change without notice. The manufacturer does not make any representations or warranties (implied or otherwise) regarding the accuracy and completeness of this document and shall in no event be liable for any loss of profit or any commercial damage, including but not limited to special, incidental, consequential, or other damage.

Safety Instructions

Always read the safety instructions carefully.

Keep this Quick Start Guide for future reference.

Keep this equipment away from humidity.

If any of the following situation arises, get the equipment checked by a service technician:

The equipment has been exposed to moisture.

The equipment has been dropped and damaged.

The equipment has an obvious sign of breakage.

The equipment has not been working well or you cannot get it work according to Quick start Guide.

Copyright Statement

No part of this publication may be reproduced in any form by any means without the prior written permission.

Other trademarks or brand names mentioned herein are trademarks or registered trademarks of their respective companies.

WEEE Directive & Product Disposal

At the end of its serviceable life, this product should not be treated as household or general waste. It should be handed over to the applicable collection point for the recycling of electrical and electronic equipment, or returned to the supplier for disposal.

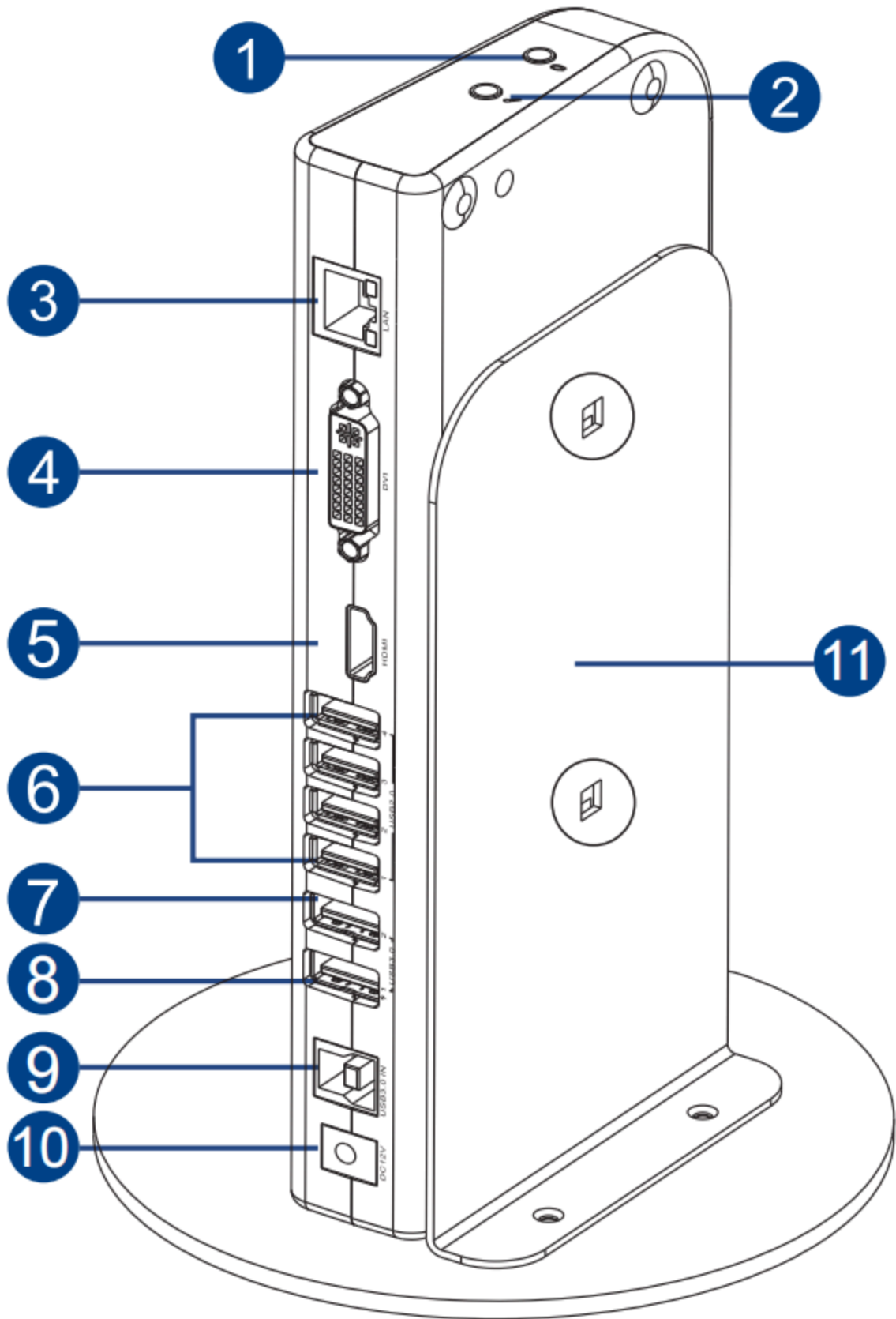


Chapter 1 Product Basic Info

This chapter contains the following sections:

- [OVERVIEW](#)

OVERVIEW



① Headphone Output

② Microphone Input

- ③ LAN Port (1Gbps)
- ④ DVI Port (2048×1152@60Hz)
- ⑤ HDMI Port (3840×2160@30Hz)
- ⑥ USB 2.0 Type-A Ports
- ⑦ USB 3.0 Type-A Port (5Gbps)
- ⑧ USB 3.0 Type-A Port (5Gbps+BC1.2 7.5W)
- ⑨ USB 3.0 Type-B Port (Host)
- ⑩ DC Power Port
- ⑪ Detachable Vertical Aluminum Alloy Stand

Chapter 2 How to Use

This chapter contains the following sections:

- [HOW TO USE](#)

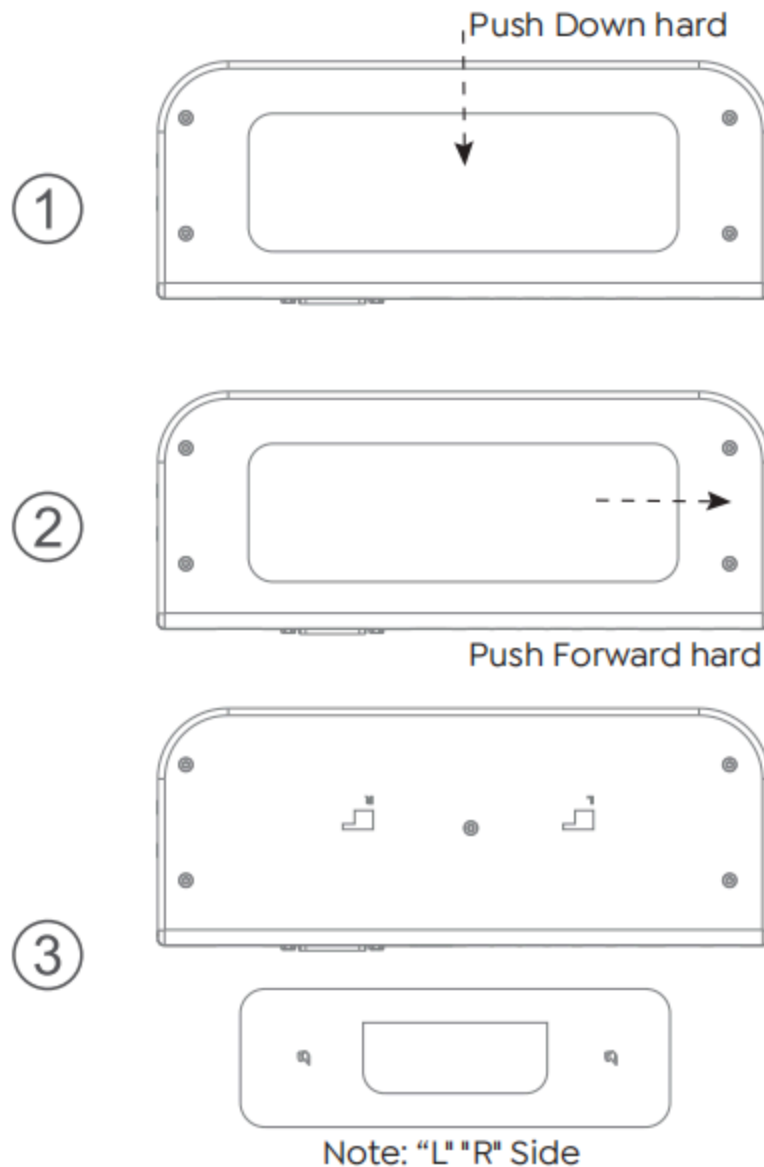
HOW TO USE

Ensuring the driver has been installed before using this Docking Station.

1. Using the Docking Station Horizontally (Flat on a Desk)

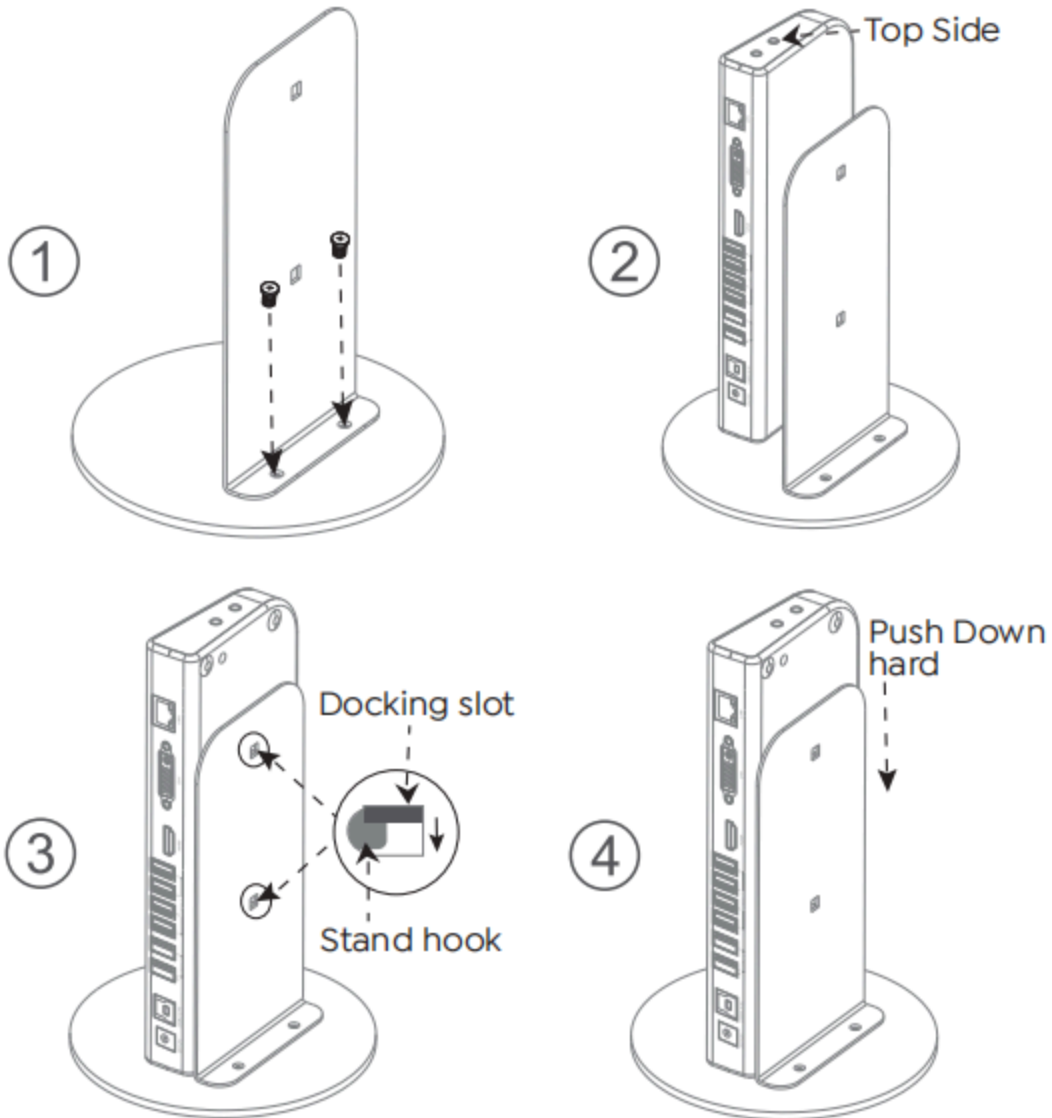
The docking station comes with an adhesive plastic padding on the back, allowing it to sit flat on a table.

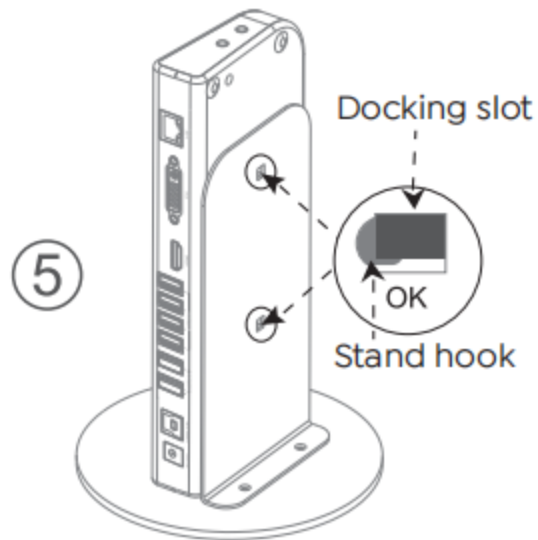
2. Using the Docking Station Vertically (With the Stand)



Note: If you plan to mount the docking station vertically using the stand, you'll need to remove the adhesive pad first. To do so, press firmly on the center of the pad to loosen it, then slide it **to the right** until it comes off completely. (The pad is reusable—just clean it with water and let it dry thoroughly before reapplying.)

Vertical





Please remove the plastic padding before clipping the docking station to the stand.

Step 1 Use a small screwdriver to secure the stand to the round bottom plate.

Step 2 Ensure that the Audio and Microphone output holes are facing upward.

Step 3 Align the two slots on the back of the docking station with the hooks on the stand.

Step 4 Press the docking station down firmly until it snaps securely into place.

3.Connecting Peripherals

Step 1: Connect to Power

Connect the Power Adapter to the DC Power Port, then plug the Power Adapter into a power source.

Step 2: Connect to Your Laptop

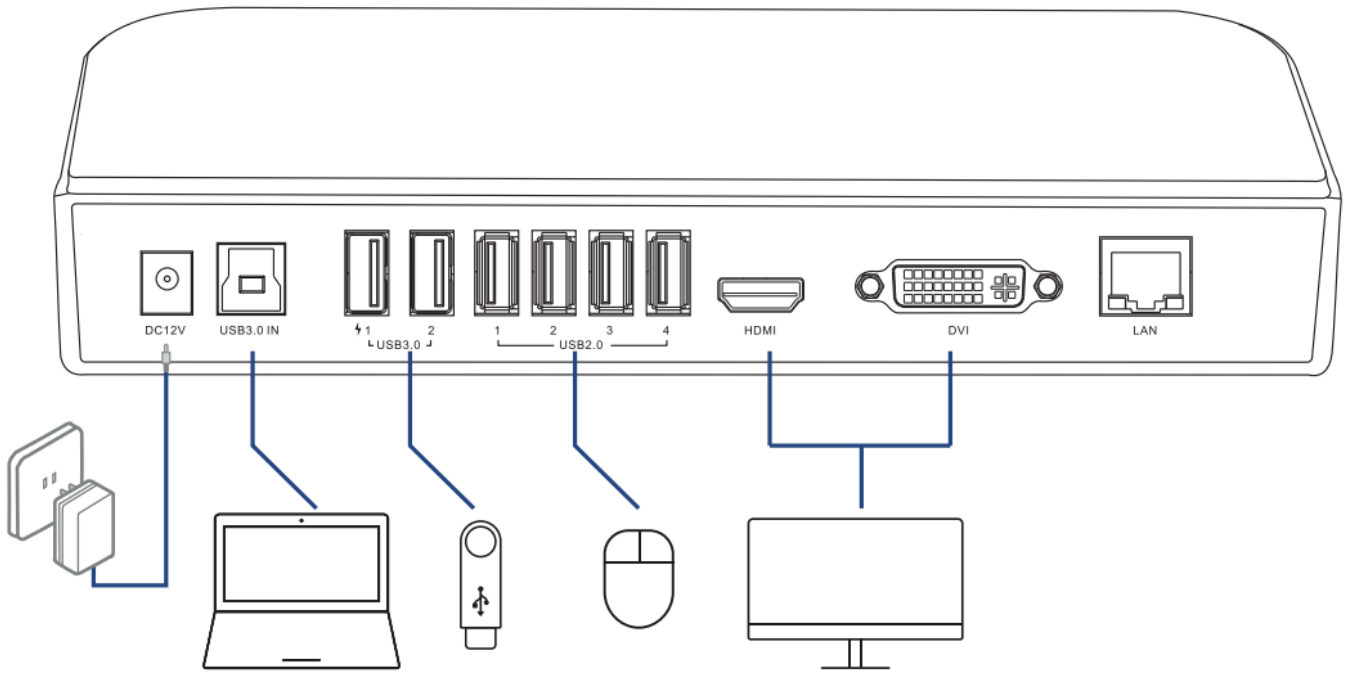
Connect the USB 3.0 IN port on the Docking Station to your laptop via the provided USB 3.0 Type-A to Type-B Cable. Please use the provided USB-A to USB-C Adapter if your computer only has a USB-C port.

Step 3: Connect to Monitors

Connect the HDMI and DVI ports to monitors according to your needs.

Step 4: Connect to USB Peripherals

Connect USB peripherals to USB 2.0 or USB 3.0 ports according to your needs.



Chapter 3 Display

This chapter contains the following sections:

- [DISPLAY RESOLUTION](#)
- [DRIVER INSTALLATION](#)
- [DISPLAY SETTING](#)

DISPLAY RESOLUTION

Scenarios	System	Connected with USB3.0 port on computer
Single Display	Extend & Mirror	HDMI:3840x2160@30Hz DVI:1920x1080@60Hz
Dual Display	Extend & Mirror	HDMI+DVI:3840x2160@30Hz+1920x1080@60Hz

DRIVER INSTALLATION

The docking station is based on Silicon Motion technology, which manages the graphics function. It requires downloading and installing the Silicon Motion driver to make it work, found here:

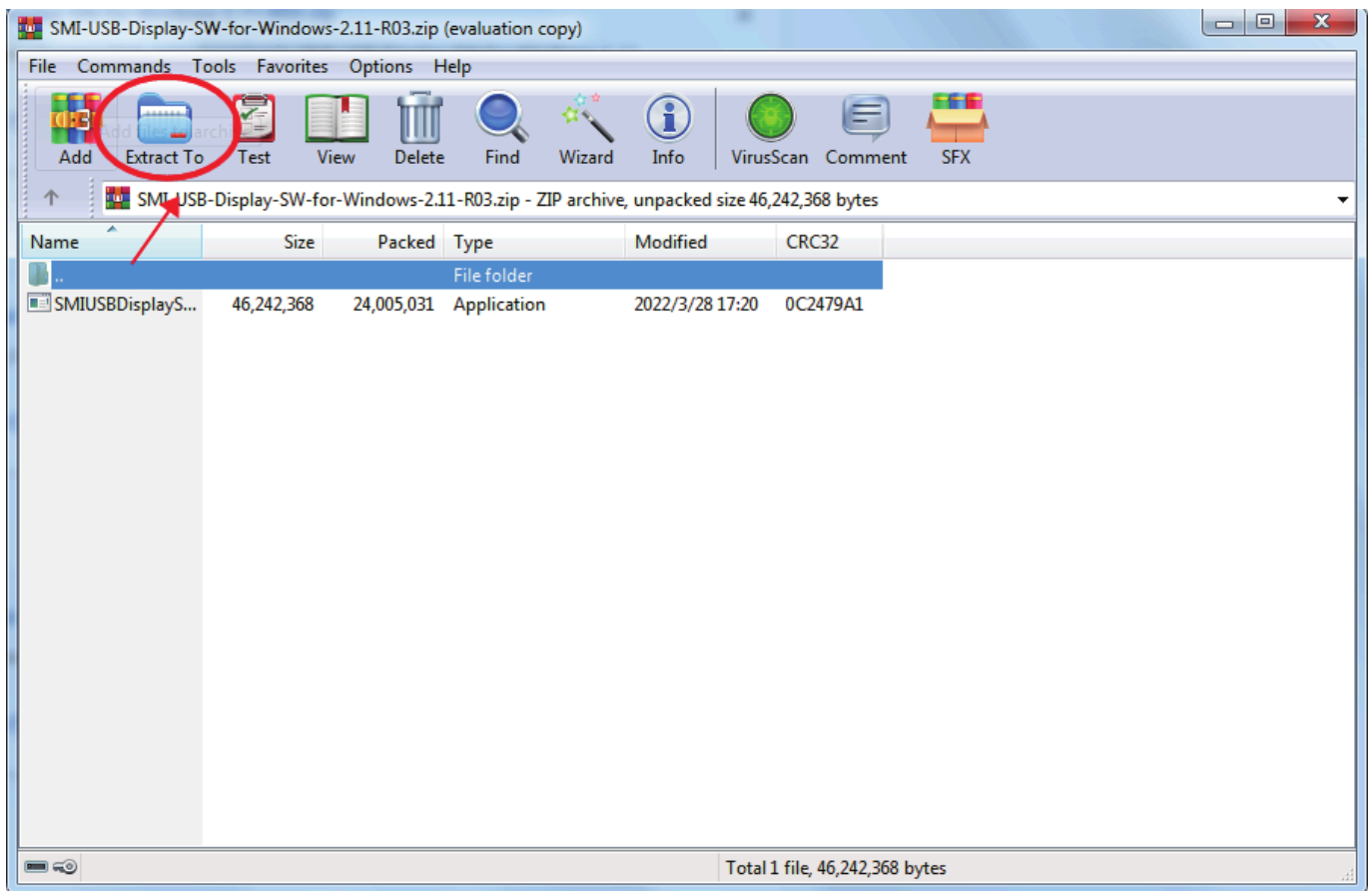
Way 1: Visit www.wavlink.com/en_us/WL-UG49DK4V

Way 2: Enter www.wavlink.com > **SUPPORT** > **Driver** and search **WL-UG49DK4V**

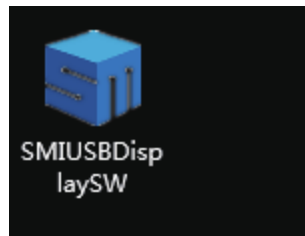
Way 3: Visit <https://www.siliconmotion.com/downloads/>

For Windows

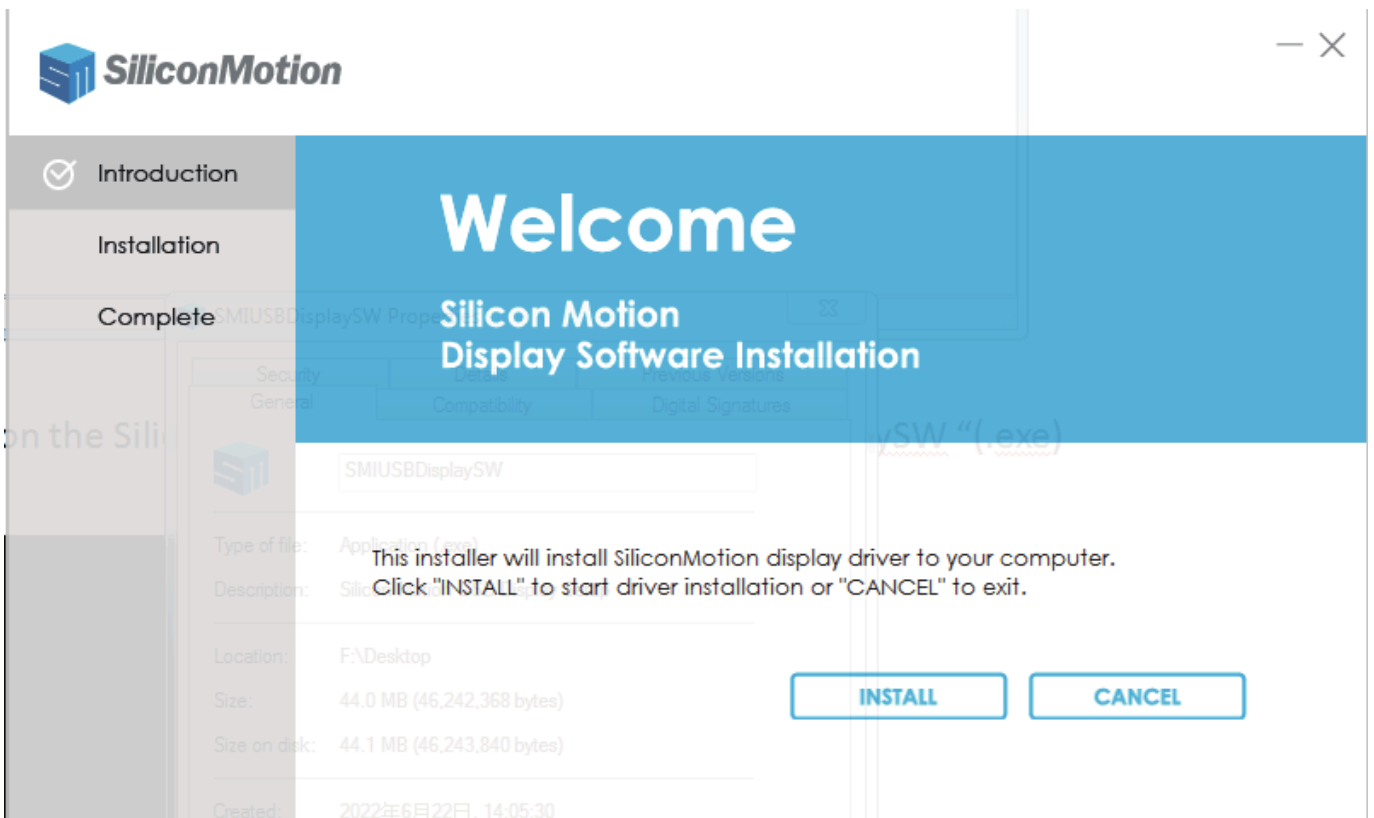
1. Download the Silicon Motion Driver. You can visit www.wavlink.com/en_us/WL-UG49DK4V or enter www.wavlink.com and click **SUPPORT>Driver>USB Display>WL-UG49DK4V** to find and install the driver.
2. Extract the driver installation package to the desktop.



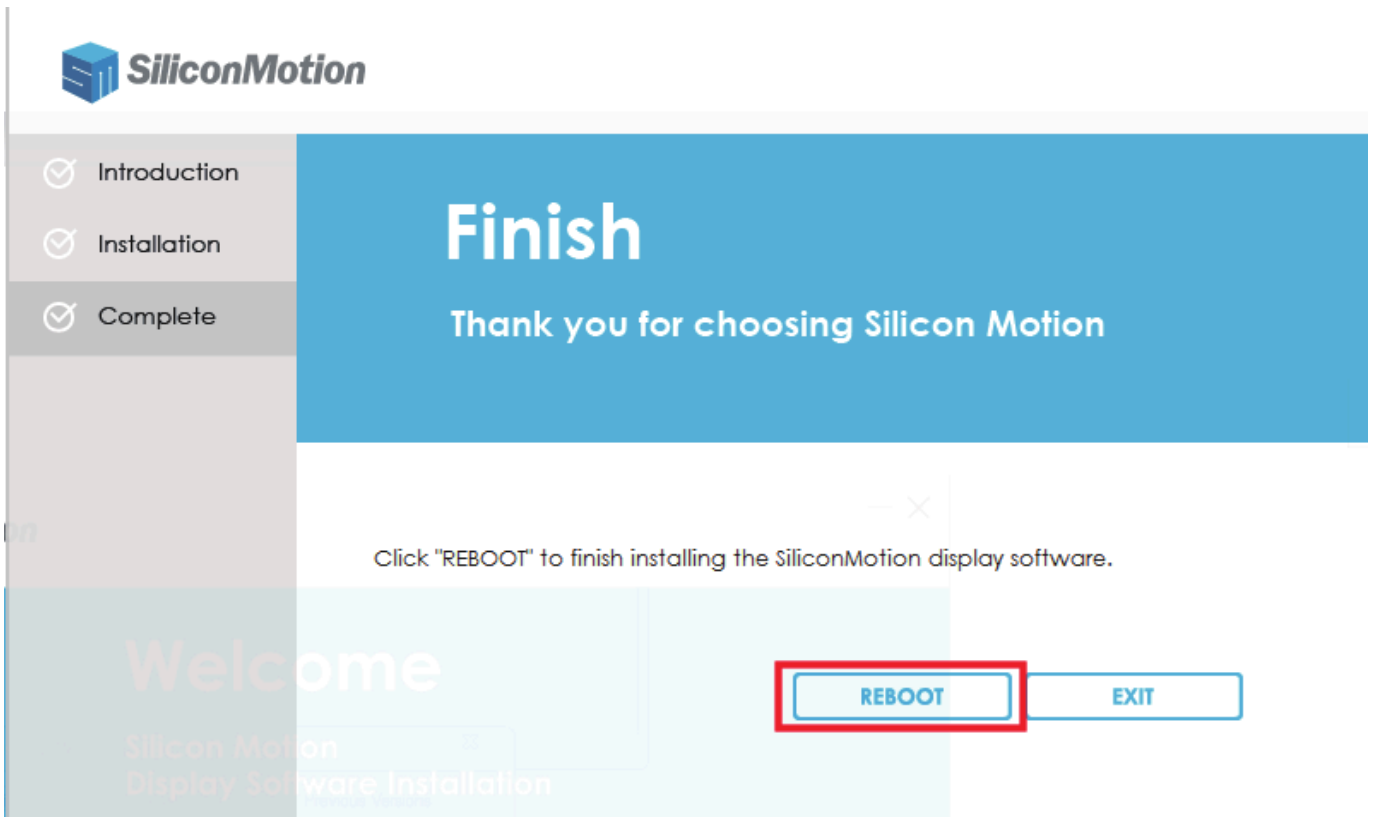
3. Double-click on the Silicon Motion executable, e.g. "**SMIUSBDisplaySW**" (.exe)



4. Click "**INSTALL**".



5. Click "**REBOOT**" to complete installing the Silicon Motion display software.

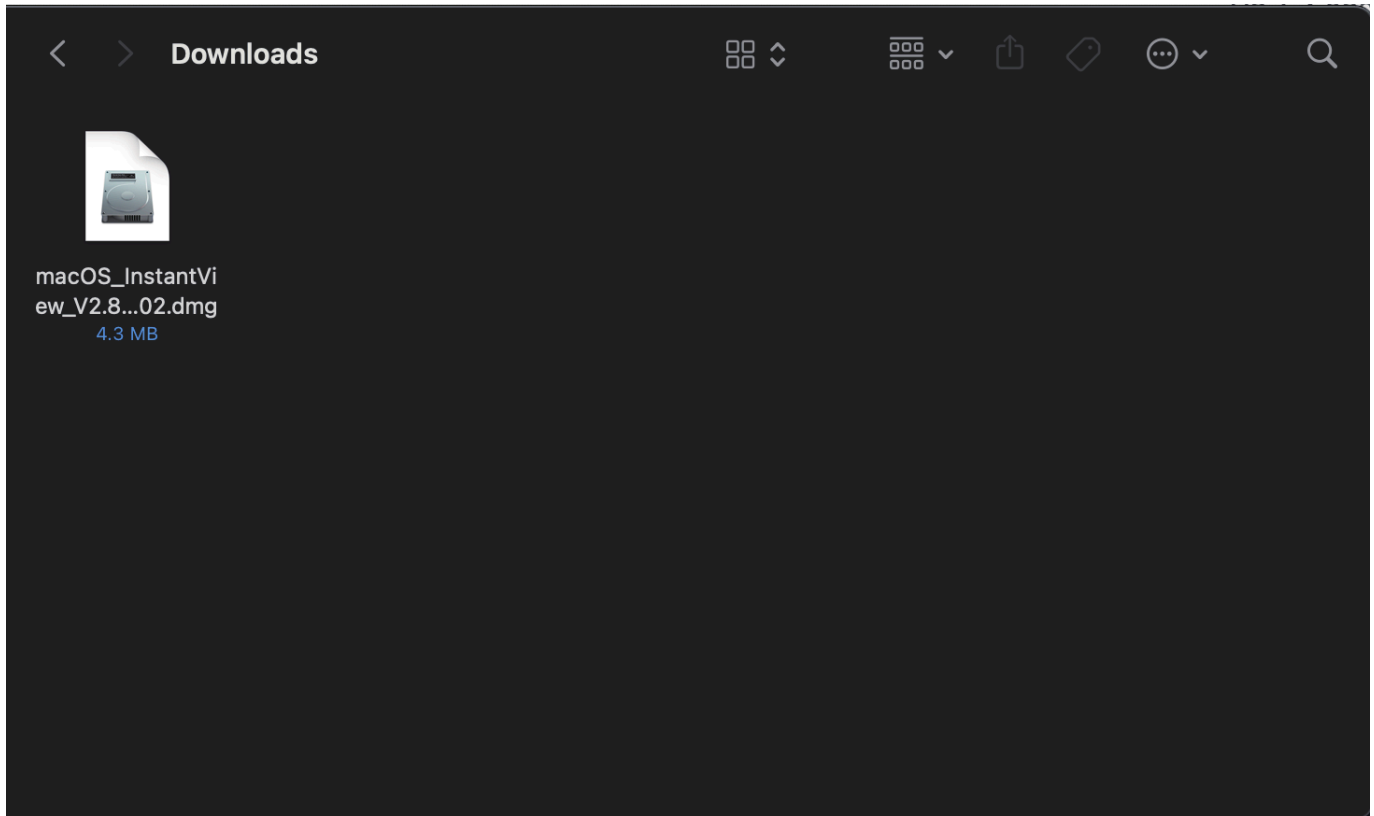


For macOS

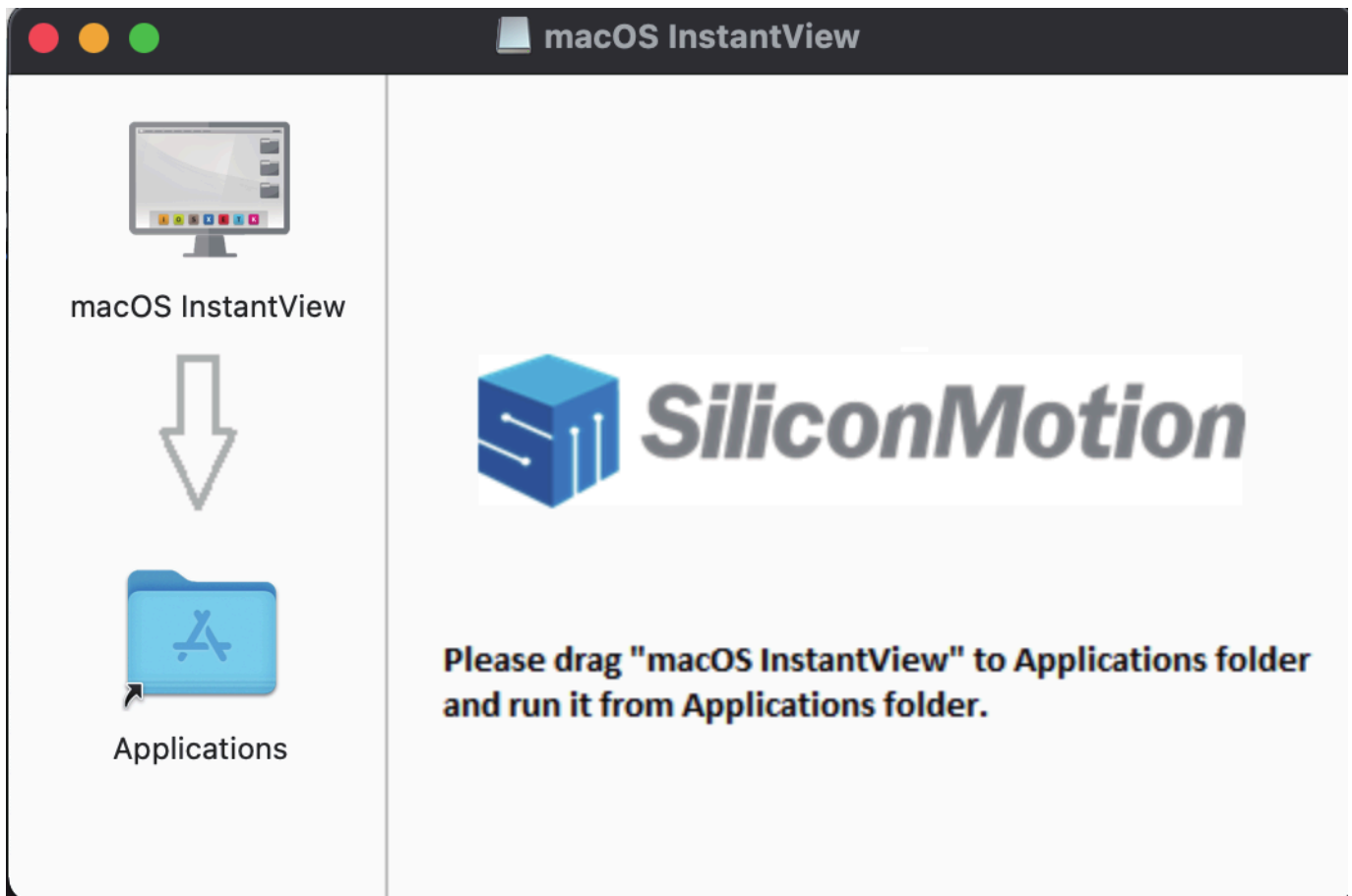
1. Download the Silicon Motion InstantView application for macOS. Please visit www.wavlink.com/en_us/WL-UG49DK4V or enter www.wavlink.com and click

SUPPORT>Driver>USB Display>WL-UG49DK4V to find and install the driver.

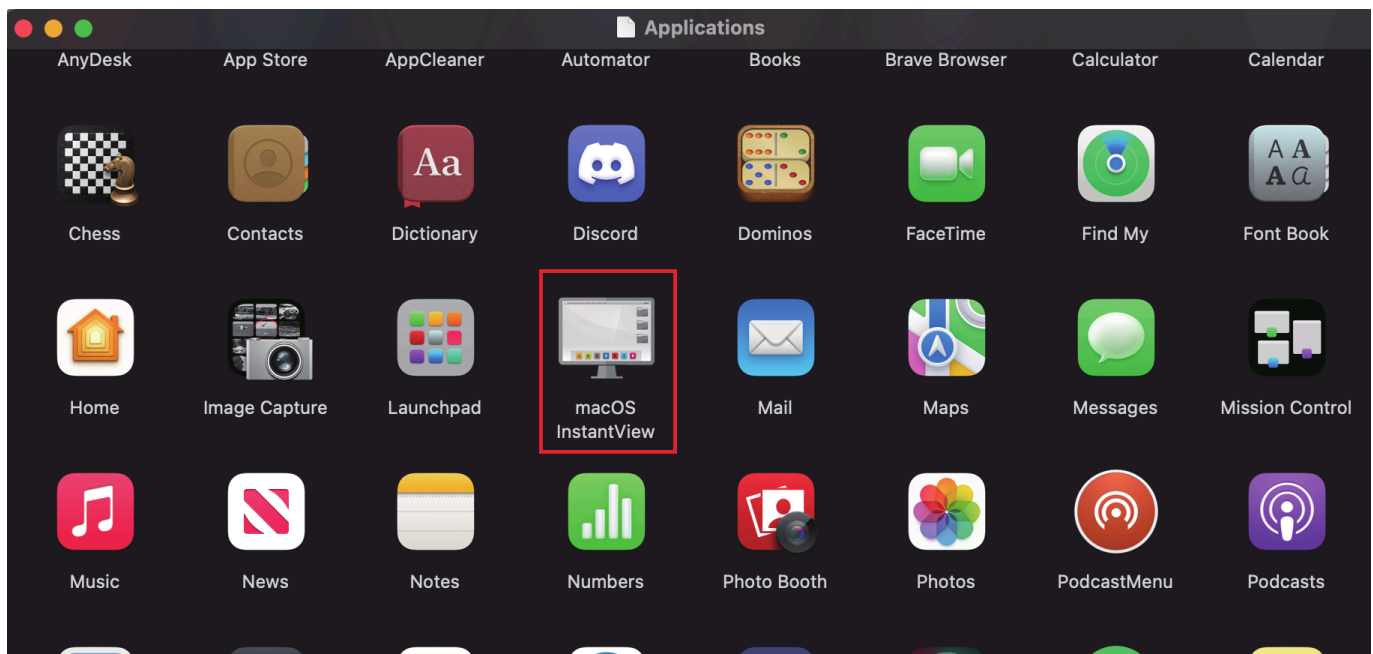
2. Double-click on the file you downloaded to start the application installer.



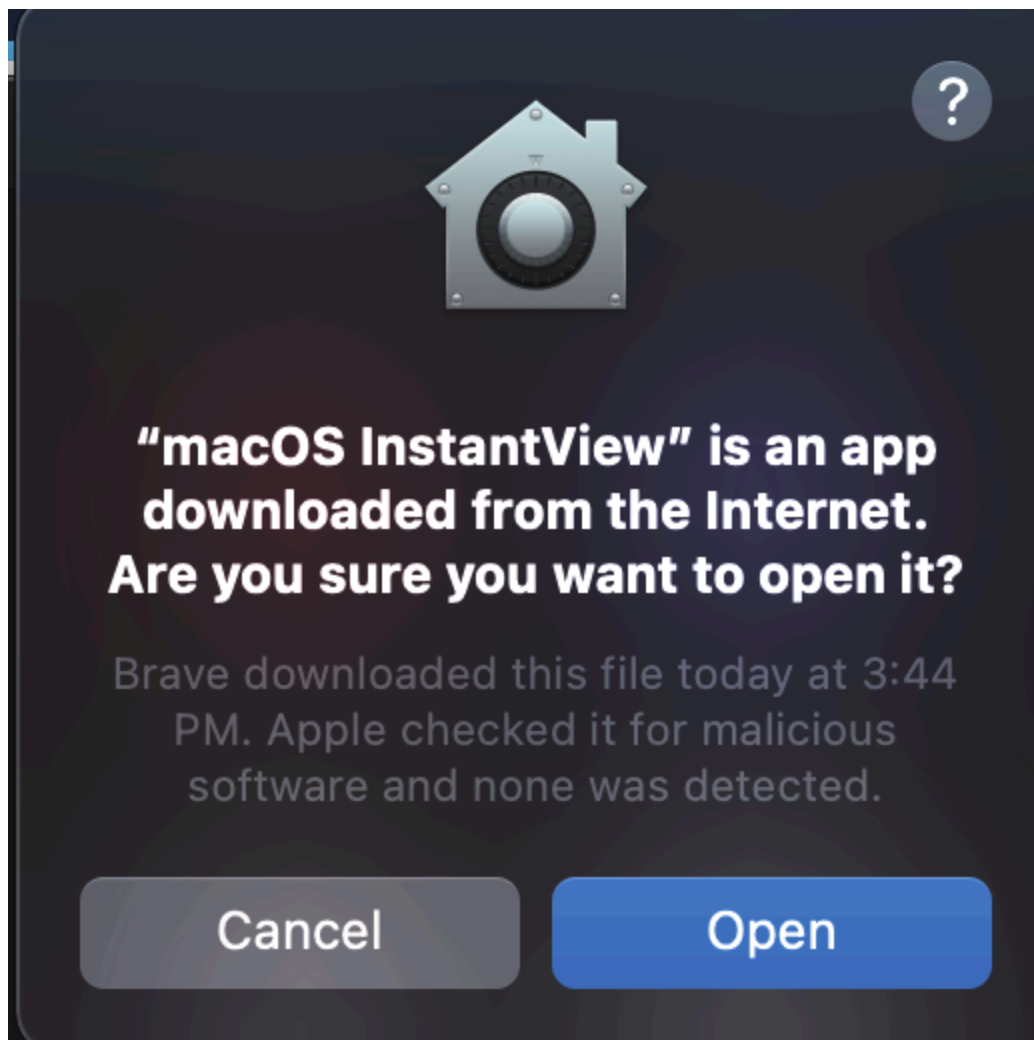
3. Drag the macOS InstantView application icon into the Applications folder in the open window.



4. Navigate to your Launchpad or Applications folder to find the InstantView application and double-click to launch it.

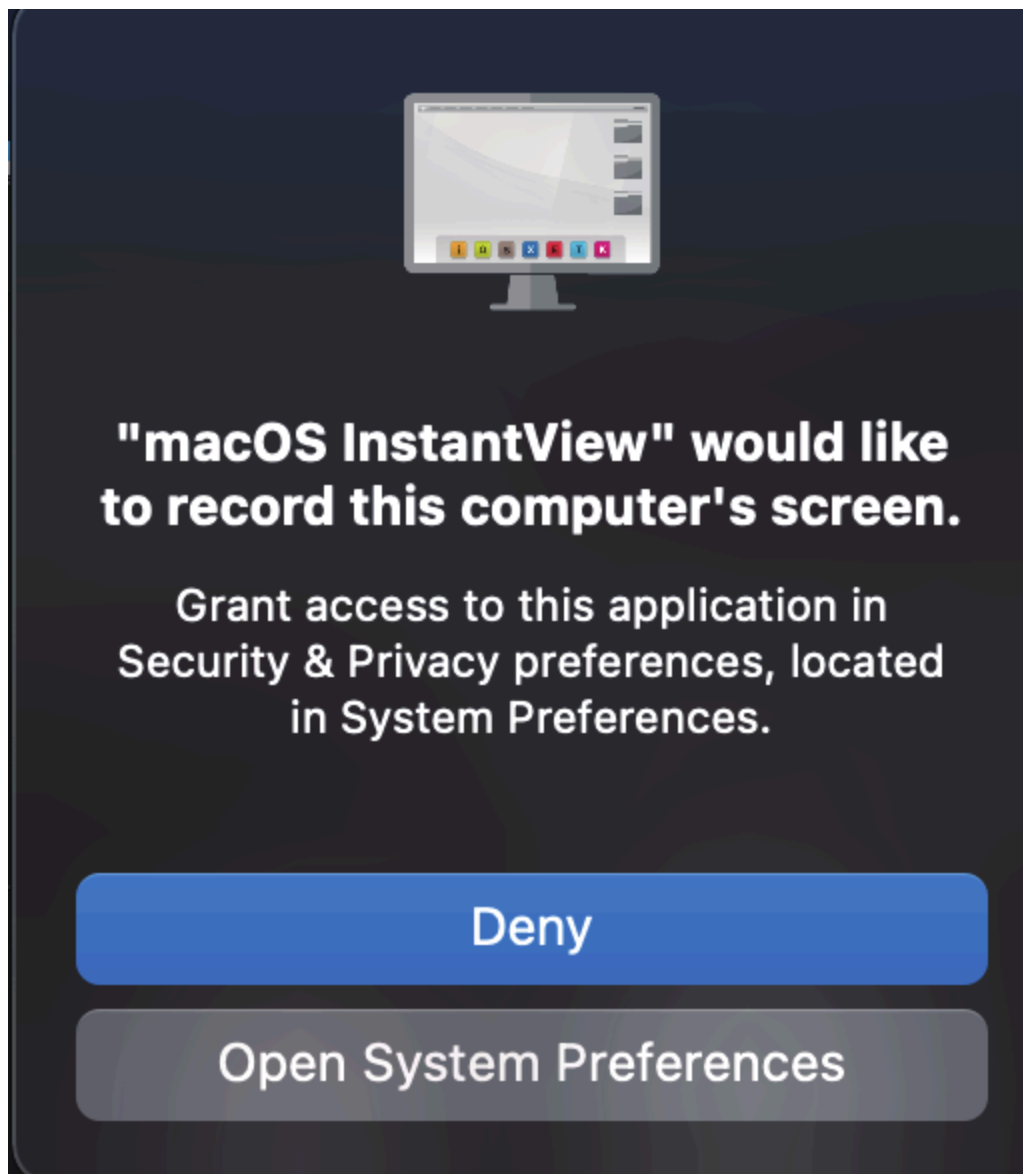


5. Click "Open".

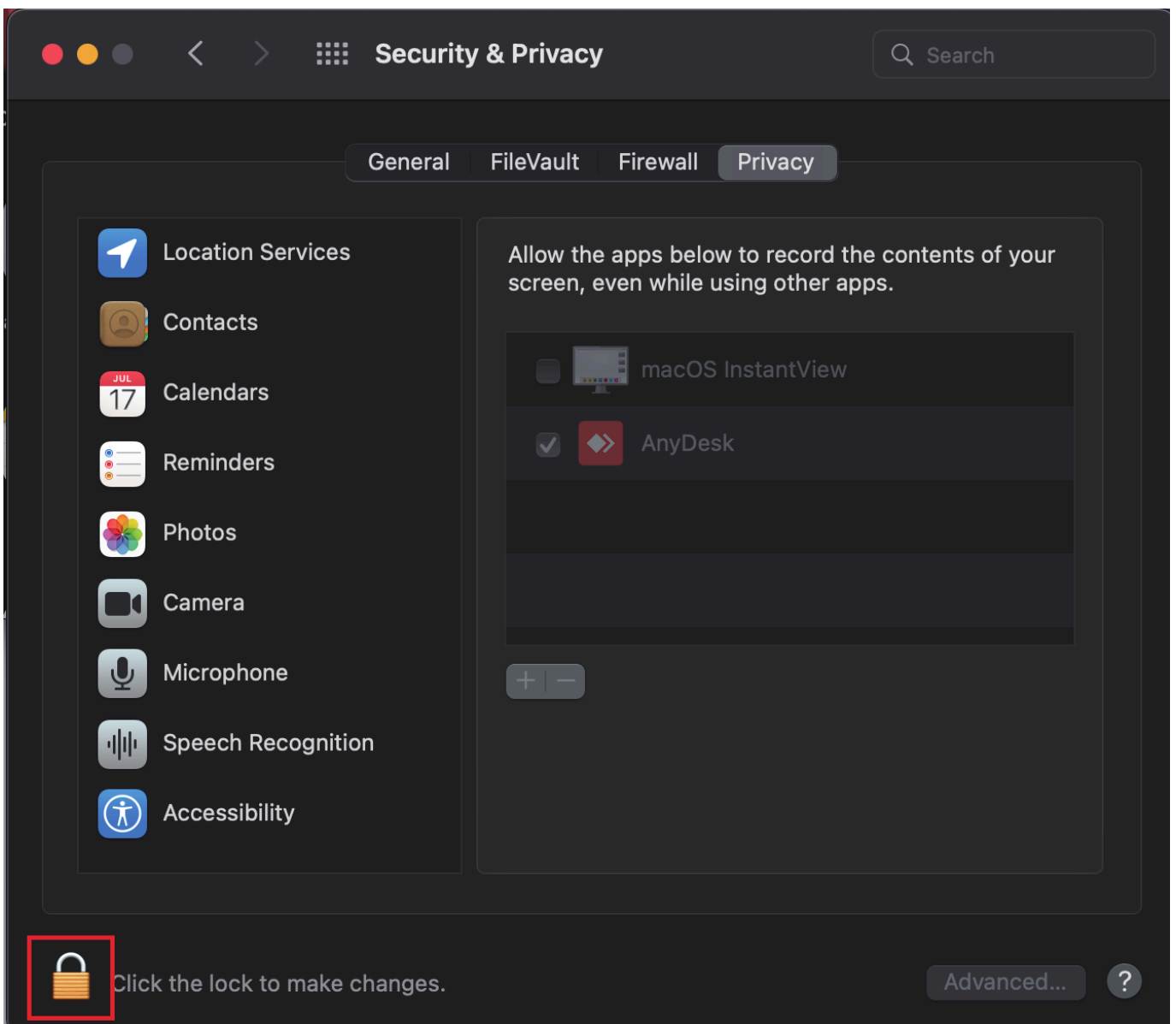


6. Click **Open System Preference**.

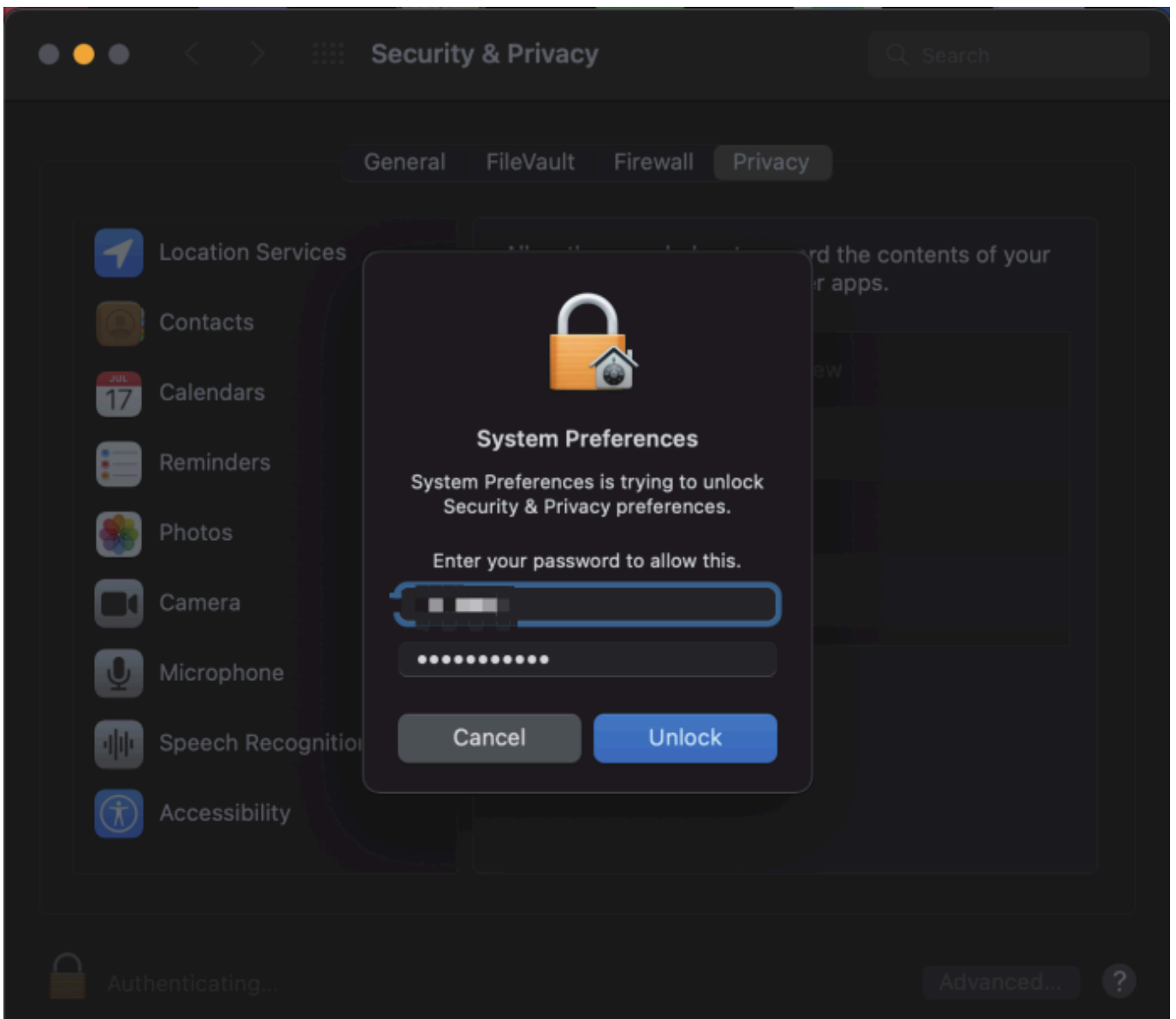
Note: this should automatically open the **Security and Privacy** section, but if it does not you can manually open the **Security and Privacy settings**.



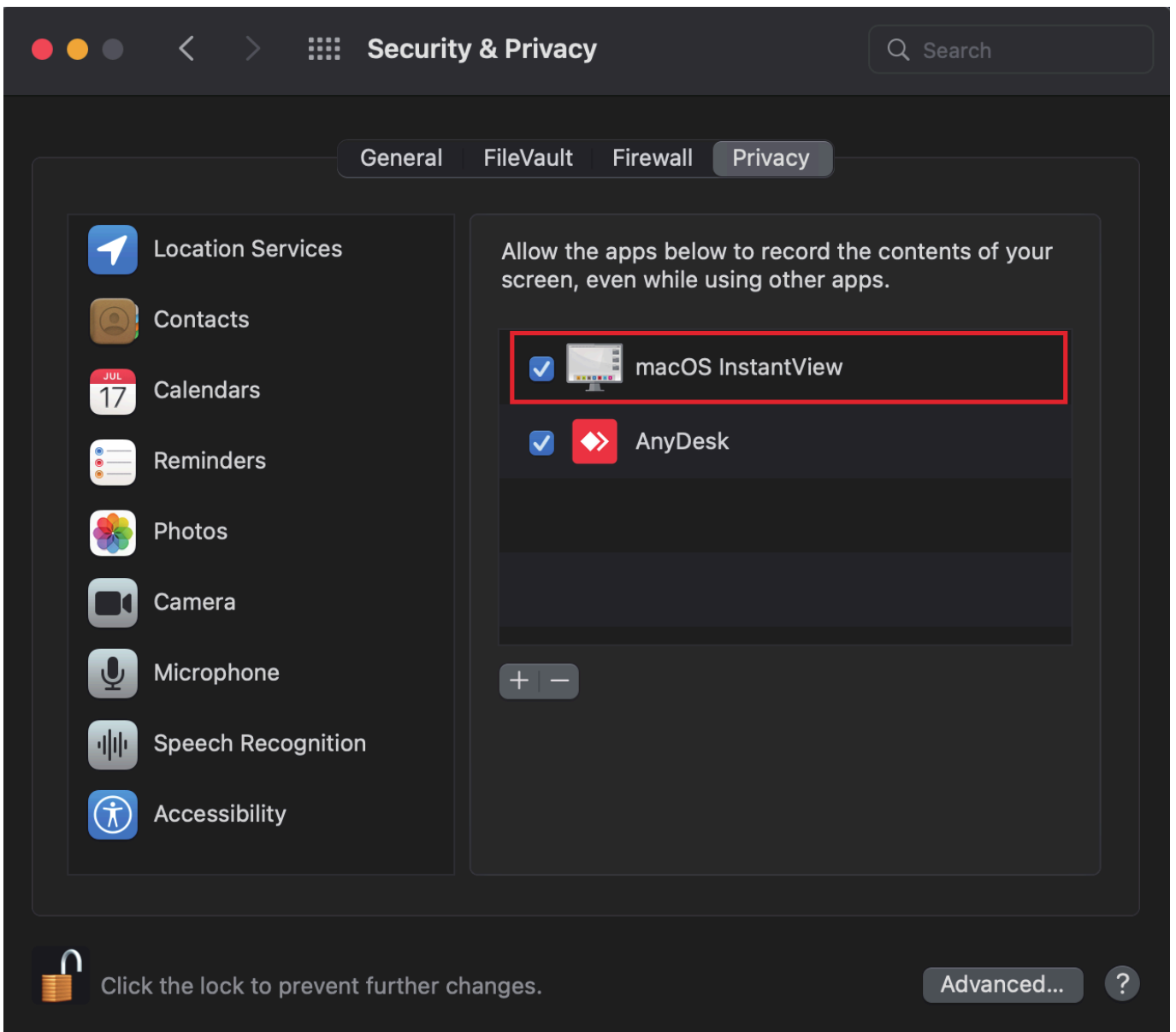
7. Click on the gold padlock at the bottom of the application window to enable changes.



8. If prompted, enter your password and click the "Unlock" button.



9. Click to place a checkmark next to the macOS InstantView entry.



10. You will be promoted to Quit and Reopen the InstantView application in order for the change to take effect. Please do so:



"macOS InstantView" will be able to record the contents of your screen until it is quit.

You can choose to quit "macOS InstantView" now, or do it on your own later.

Later

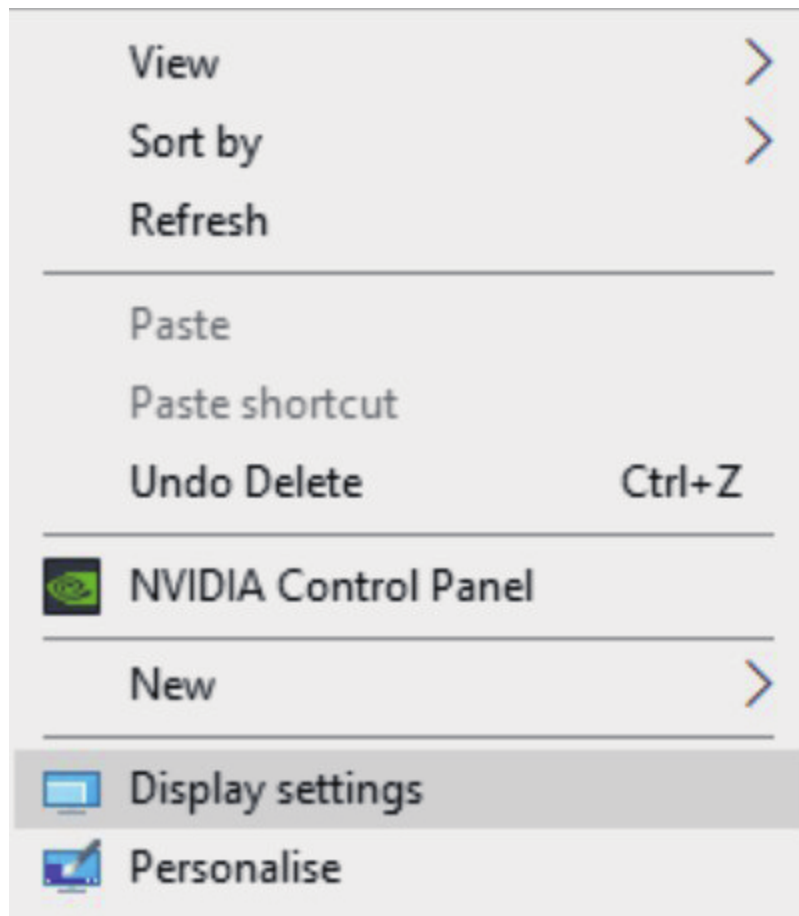
Quit & Reopen

11. The software has now been installed and you may connect your graphics adapter or docking station.

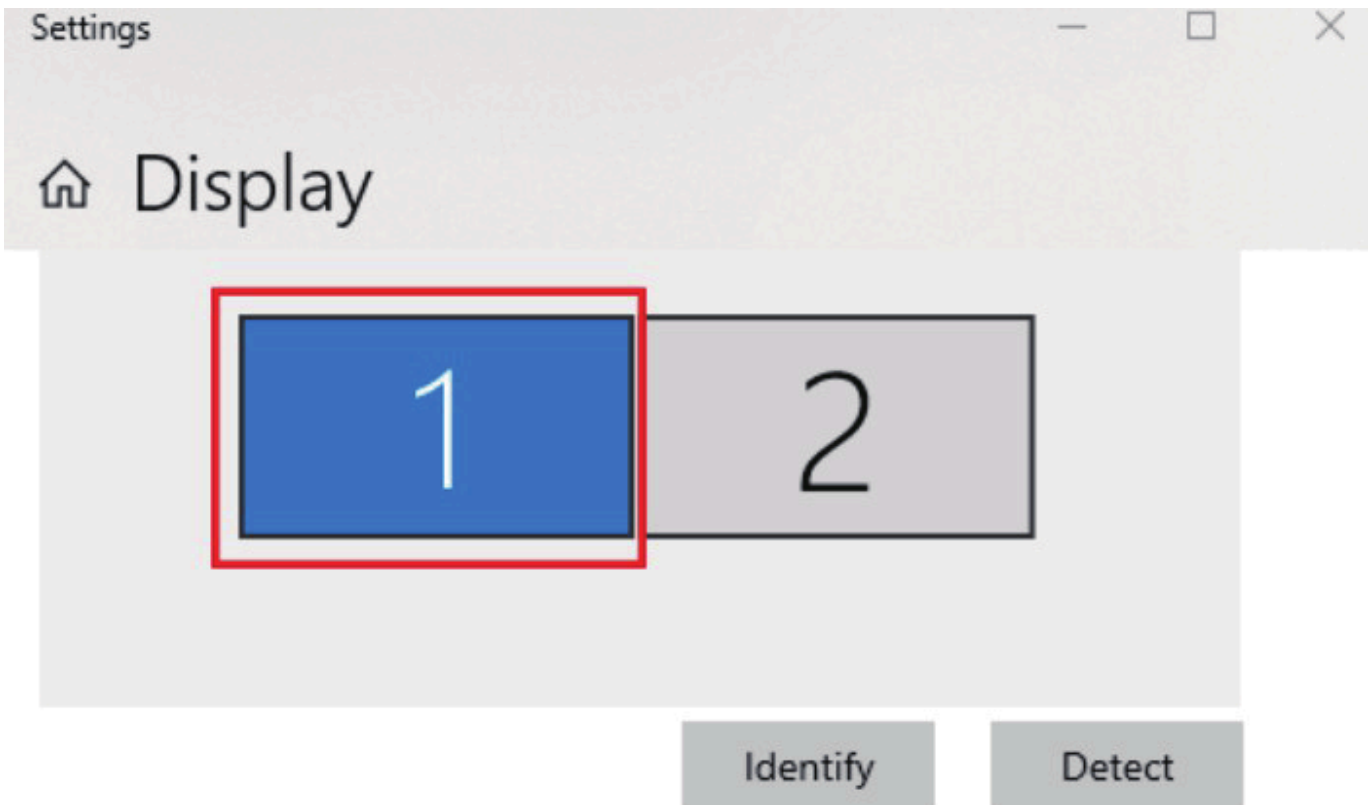
DISPLAY SETTING

For Windows User

1. Right-click at any spot on your desktop and select "**Display settings**".



2. In "**Display**", please select either monitor 1 or monitor 2.



Colour

Night light



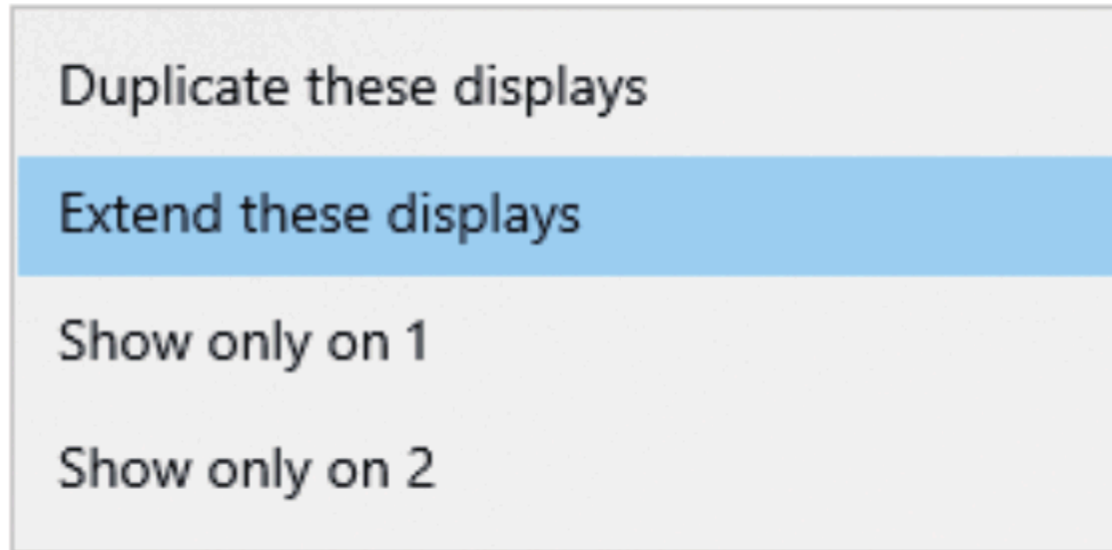
[Night light settings](#)

Windows HD Colour

Get a brighter, more vibrant picture in HDR and WCG videos, games and apps.

3. Scroll down to the "**Multiple displays**", and select the mode in the drop-down list that is fit for your needs.

Multiple displays



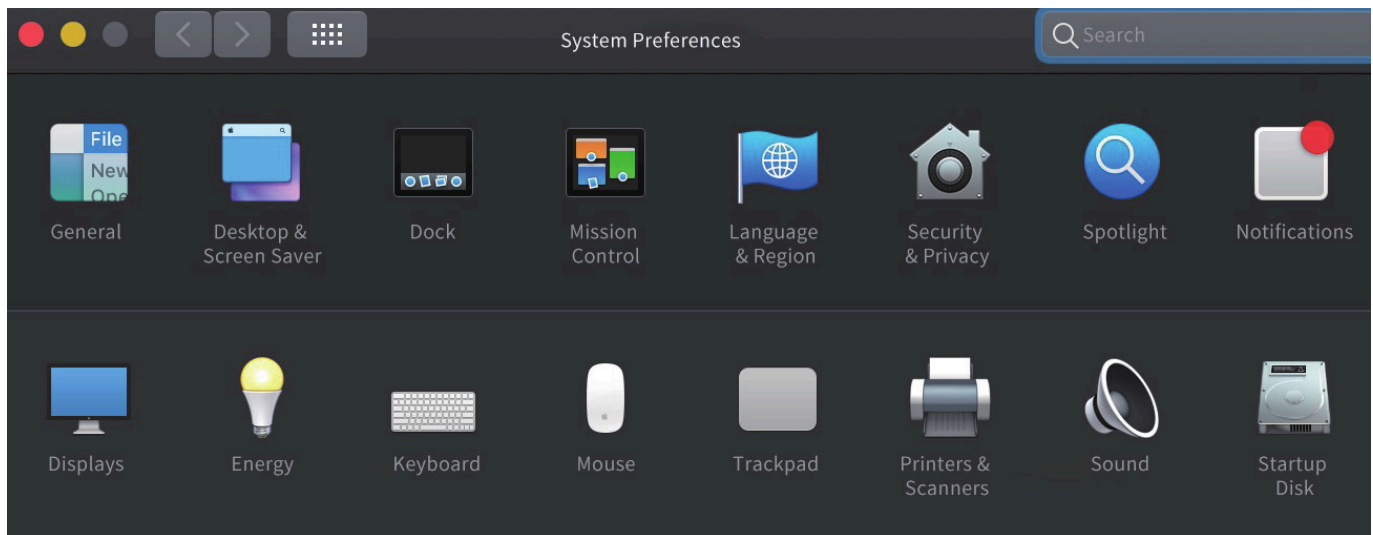
Connect to a wireless display

Advanced display settings

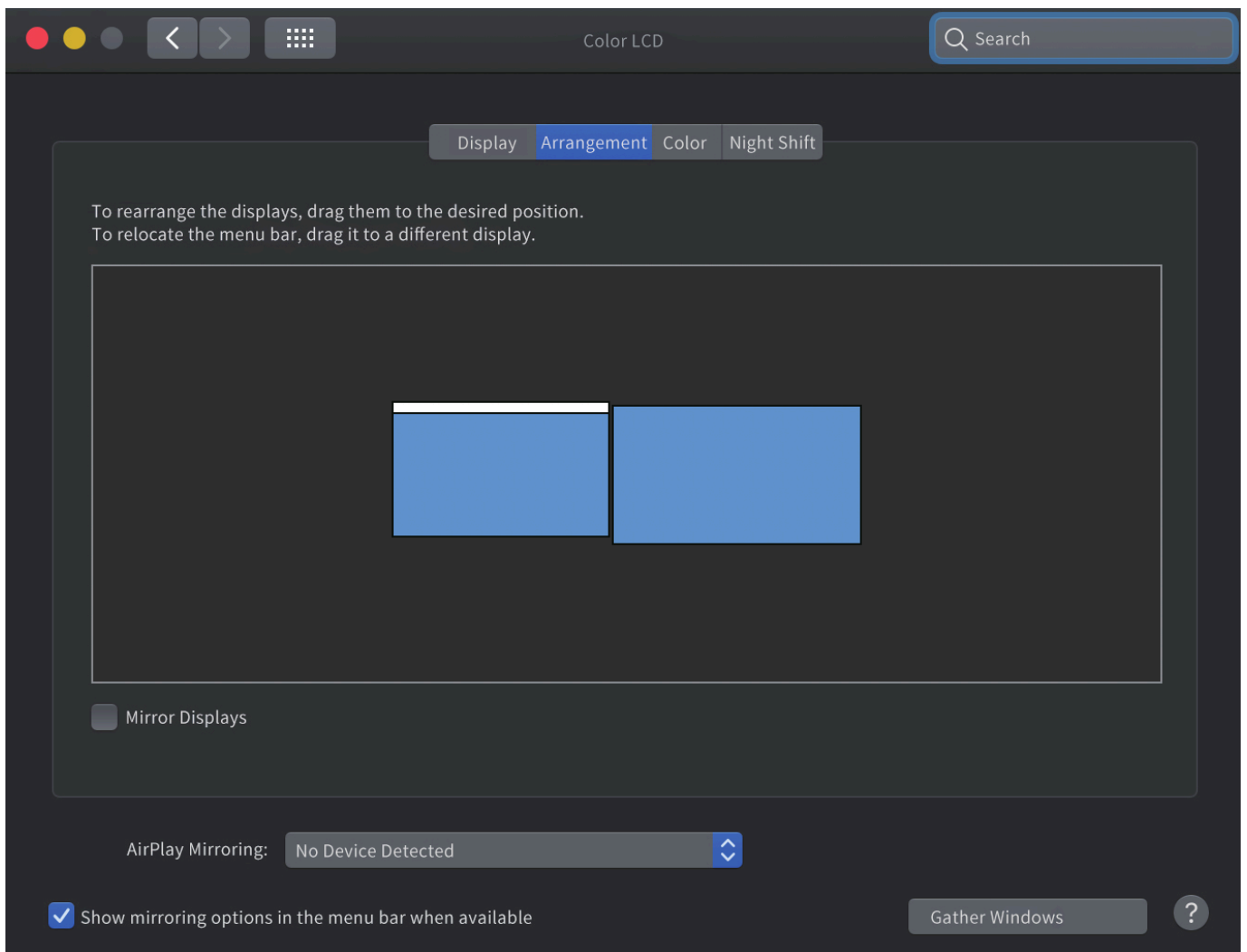
Graphics settings

For macOS User

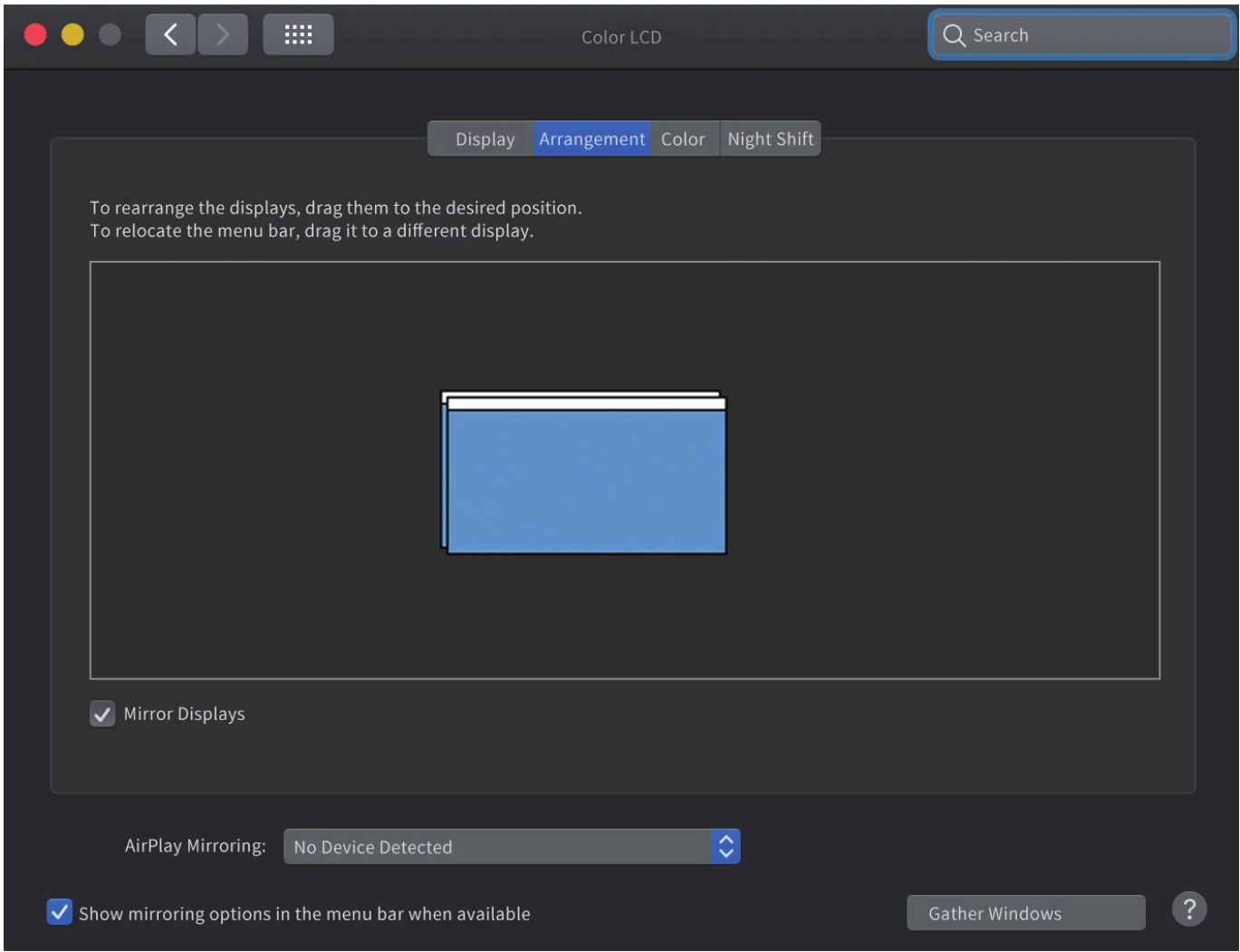
1. Select "**System Preferences**" and choose "**Displays**".



2. Click on "**Arrangement**" to change the position of displays currently connected.



3. To use the mirror mode, you have to mark the "Mirror Displays" box below the central icon.



Chapter 4 FAQ and Aftersale Service

This chapter contains the following sections:

- [FAQ](#)
- [AFTERSALE SERVICE](#)

FAQ

Q1: Why when I install the App for my MacBook, the App want to record my screen?

A1: Mac OS requires users to permit “Screen Recording” for the Silicon Motion driver to work properly. But the Silicon Motion will not send any information to the Wavlink and the Silicon Motion. Please do not worry about that.

Q2: Why the apple tv, hulu, netflix could not play when the docking is connected?

A2: The adapter could not support hdcp, the protected content such as apple tv, hulu, netflix could not play when the docking is connected. And it is as expected. Please disconnect the docking when you are playing these video. Or you could try to use the Chrome browser to watch these video and disable the Hardware Acceleration.

AFTERSALE SERVICE

Need help?

We're here for you!



Online support: wavlink.com

Available Mon-Fri 8:30 am-5:30pm (UTC+8)



support@wavlink.com

Available Mon-Fri 8:30 am-5:30pm (UTC+8)



+1 8889730883

Mon-Fri 9:00 am - 6:00 pm (UTC-5)

www.wavlink.com



**Thank you for purchasing
WAVLINK product!**