

WAVLINK



see the world

USB3.0 Dual-Display Universal Docking Station

Model: WL-UG39DK4V

@WavlinkOfficial

@WavlinkTechSupport

Table of contents:

- About This Guide
 - Conventions
 - More Info
 - Speed/Coverage Disclaimer
- Chapter 1 Basic Information
 - OVERVIEW
 - SYSTEM REQUIREMENT
 - HOW TO USE
- Chapter 2 Display Resolution
 - Display Resolution
- Chapter 3 Driver Installation and Display Mode
 - DRIVER INSTALLATION
 - For Windows
 - For Mac
 - DISPLAY MODE SETTING
 - For Windows
 - For Mac OS X12 or Below
 - For Mac OS X13
- Chapter 4 FAQ
 - FAQ
 - Q1. Why when I install the app for my Macbook, the App want to record my screen?
 - Q2. Why the apple tv, hulu, netflix could not play when the docking is connected?
 - Aftersale Service

About This Guide

This guide is a complement to Quick Installation Guide. The Quick Installation Guide provides instructions for quick internet setup, while this guide contains details of each function and demonstrates how to configure them.

When using this guide, please notice that features of the router may vary slightly depending on the model and software version you have, and on your location, language, and internet service provider. All screenshots, images, parameters and descriptions documented in this guide are used for demonstration only.

Conventions

In this guide the following conventions are used :

Convention	Description
<u>Underlined</u>	Underlined words or phrases are hyperlinks. You can click to redirect to a website or a specific section.
Teal	The content and text that needs to be emphasized on the web page is the theme color #1D428A , including menus, items, buttons, etc.
>	The menu structures to show the path to load the corresponding page. For example, More > Network > Mode Selection means the Mode Selection function page is under the Network menu that is located in the More tab.
Note:	Do not ignore this type of comment, it is to remind you to better use the device, to avoid the operation of the error that will cause the function to be invalid.
Tips:	Indicates important information that helps you make better use of your device.

More Info

The latest software, management app and utility are available from the Download Center at <https://docs.wavlink.xyz/Firmware/> .

A quick installation guide can be found in this guide.

Specifications can be found on the product page at <https://docs.wavlink.xyz/>.

If you encounter any issues, please don't hesitate to email contact@wavlink.com to provide feedbacks or contact online customer service, thank you !

Speed/Coverage Disclaimer

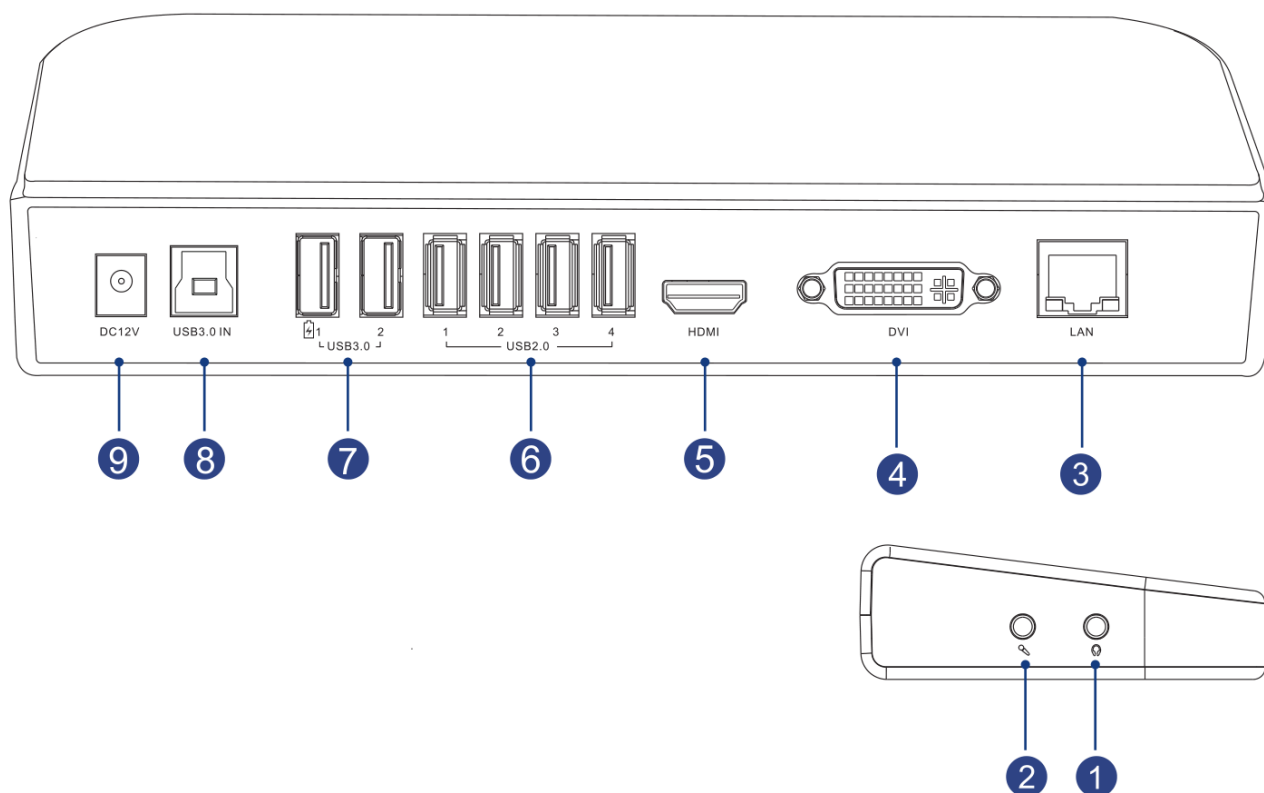
*Maximum wireless signal rates are the physical rates derived from IEEE Standard 802.11 specifications. Actual wireless data throughput and wireless coverage are not guaranteed and will vary as a result of 1) environmental factors, including building materials, physical objects, and obstacles, 2) network conditions, including local interference, volume and density of traffic, product location, network complexity, and network overhead, and 3) client limitations, including rated performance, location, connection, quality, and client condition.

Chapter 1 Basic Information

This chapter introduces the docking station's appearance and some basic information. It contains the following sections:

- [OVERVIEW](#)
- [SYSTEM REQUIREMENT](#)
- [HOW TO USE](#)

OVERVIEW



- ① Headphone Output
- ② Microphone Input
- ③ Gigabit LAN
- ④ DVI Port
- ⑤ HDMI Port
- ⑥ 4xUSB 2.0 Port
- ⑦ USB 3.0 Port

⑧ USB 3.0 IN

⑨ DC Power Jack

SYSTEM REQUIREMENT

- Computer screen for use with the device.
- Requires supported Intel/AMD/NVIDIA main GPU and WDDM-compatible driver (most recent systems meet this requirement).
- Ethernet port requires full-duplex network infrastructure.
- Updated USB 3.0 host controller drivers and graphics drivers suggested for best performance and compatibility.
- Windows XP (32-bit only) SP3 Vista/7/8 and latest, Mac OS 10.6 and latest. (64-bit editions of XP are not supported.)
- Windows 10, 8.1, 7, and XP drivers can be automatically installed by Windows Update (with an existing internet connection) or can be downloaded from www.wavlink.com

HOW TO USE

Ensure the driver has been installed before using this docking station.

Detailed driver installation operation can be seen at the part of DRIVER INSTALLATION.

Step 1: Connect to Power

Connect the power adapter to the DC 12V power port, then plug the power adapter into a power source.

Step 2: Connect to Your Laptop

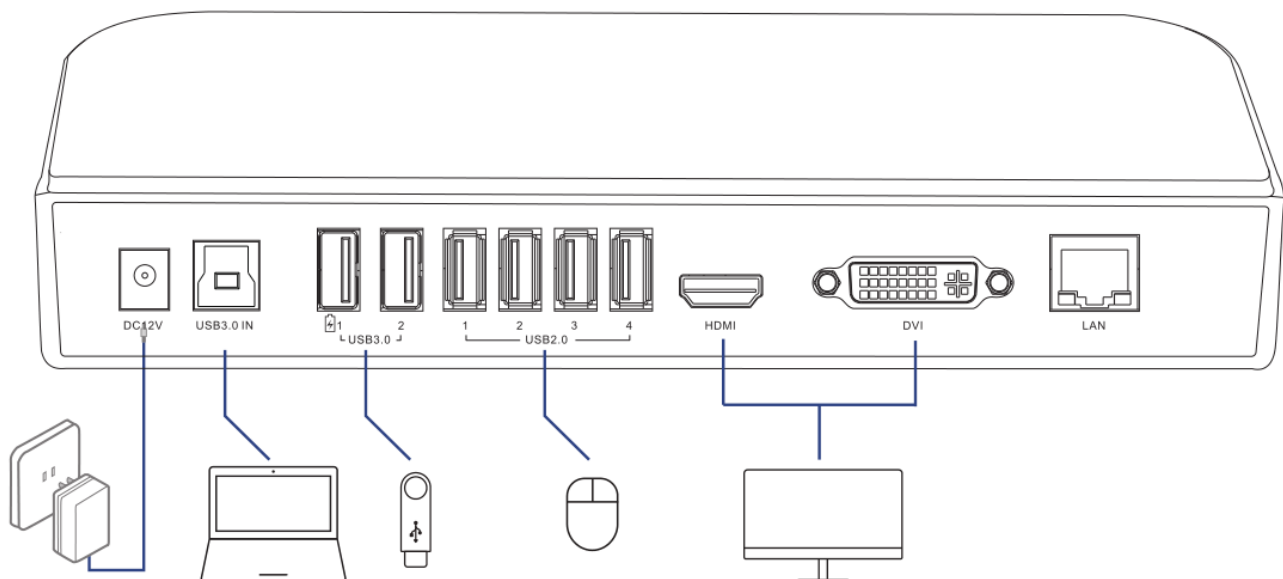
Connect the USB 3.0 IN port on the docking station to your laptop via the provided USB 3.0 Type-A to Type-B cable. Please use the provided USB-A to USB-C adapter if your computer only has a USB-C port.

Step 3: Connect to Monitors

Connect the HDMI and DVI ports to monitors according to your needs.

Step 4: Connect to USB Peripherals

Connect USB peripherals to USB 2.0 or USB 3.0 ports according to your needs.



Chapter 2 Display Resolution

- [Display Resolution](#)

Display Resolution

Item	Windows & Mac
Single Display(Extend or Mirror)	HDMI/DVI: 2048x1152@60Hz
Dual Display(Extend or Mirror)	HDMI+DVI: 2048x1152@60Hz

Chapter 3 Driver Installation and Display Mode

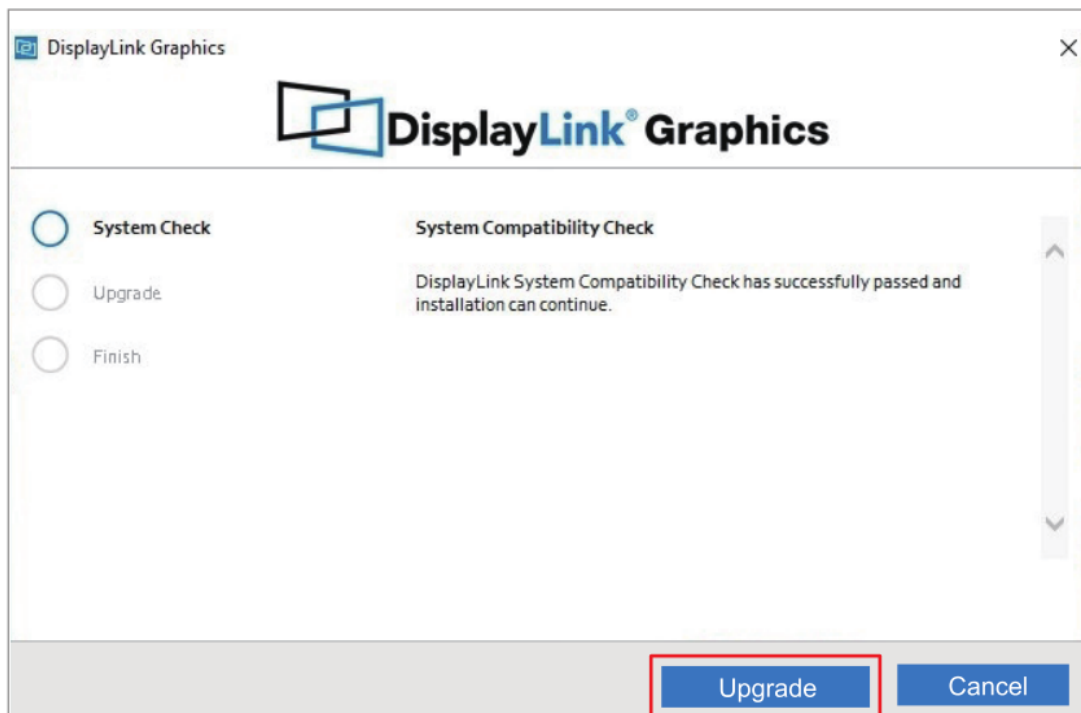
- [DRIVER INSTALLATION](#)
- [DISPLAY MODE SETTING](#)

DRIVER INSTALLATION

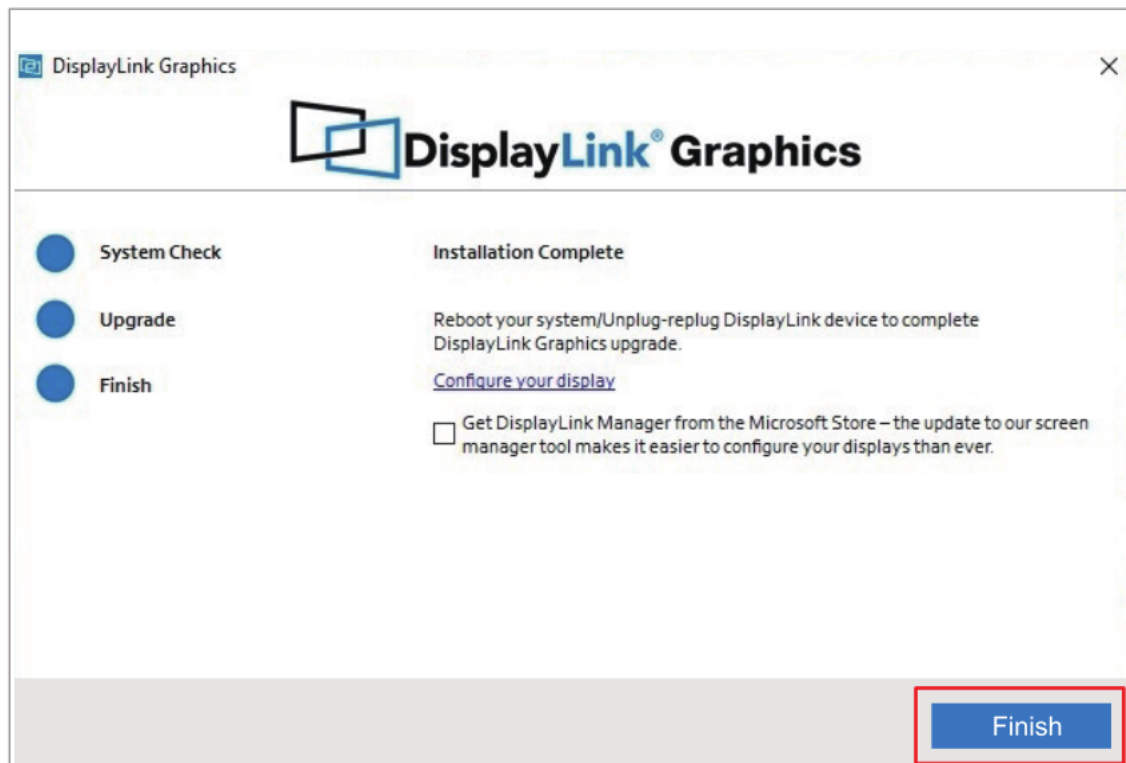
The docking station is based on DisplayLink USB graphics technology which manages the graphics function. It requires downloading and installing DisplayLink graphics driver to make it work, found here: www.wavlink.com/en_us/WL-UG39DK4V or go to www.wavlink.com > **Support** > **Driver** > **search UG39DK4V** for driver installation.

For Windows

1. Locate the downloaded folder and double-click the driver file you just downloaded.
2. Open the file and then follow guide to install the Driver; If your Windows host has ever installed the Driver, open the file and then click **Upgrade**.

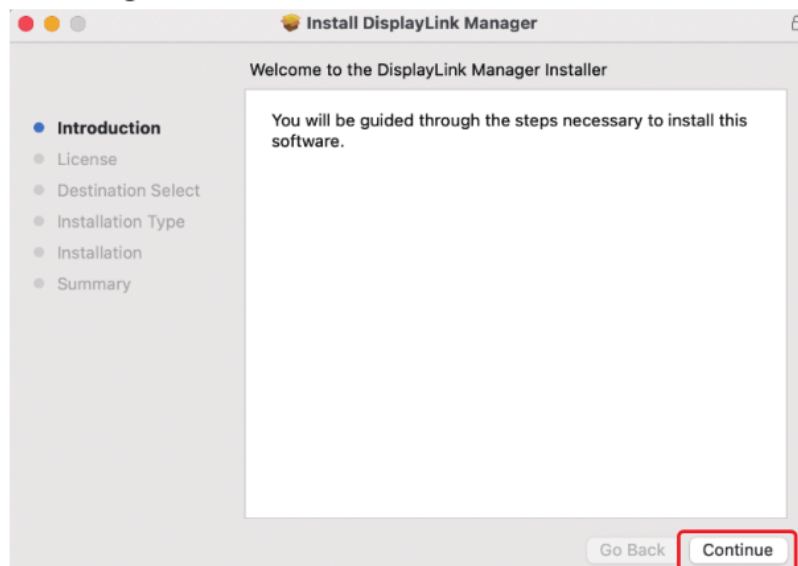


3. Please wait patiently for the completion of the installation. After finishing installation, click **Finish**.

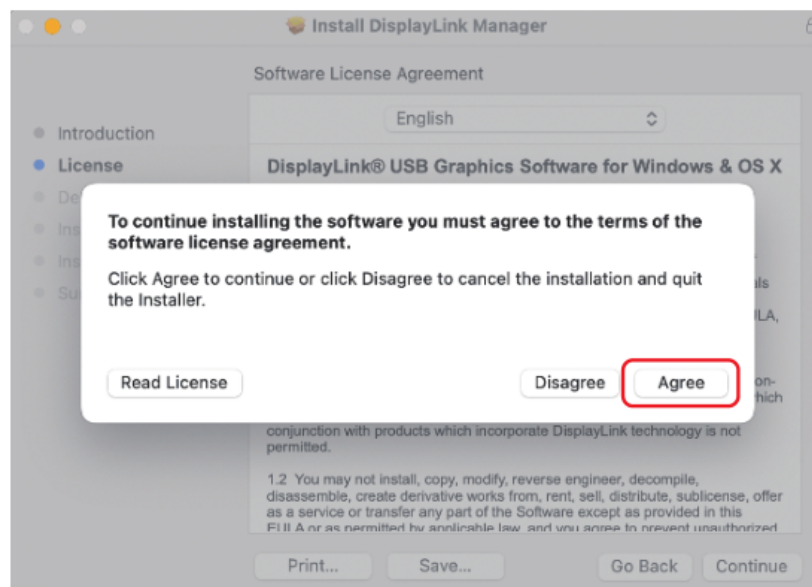
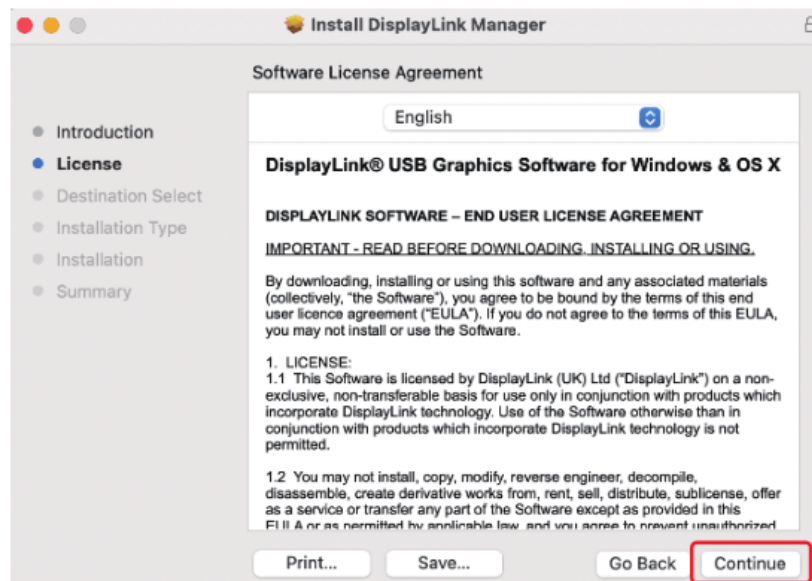


For Mac

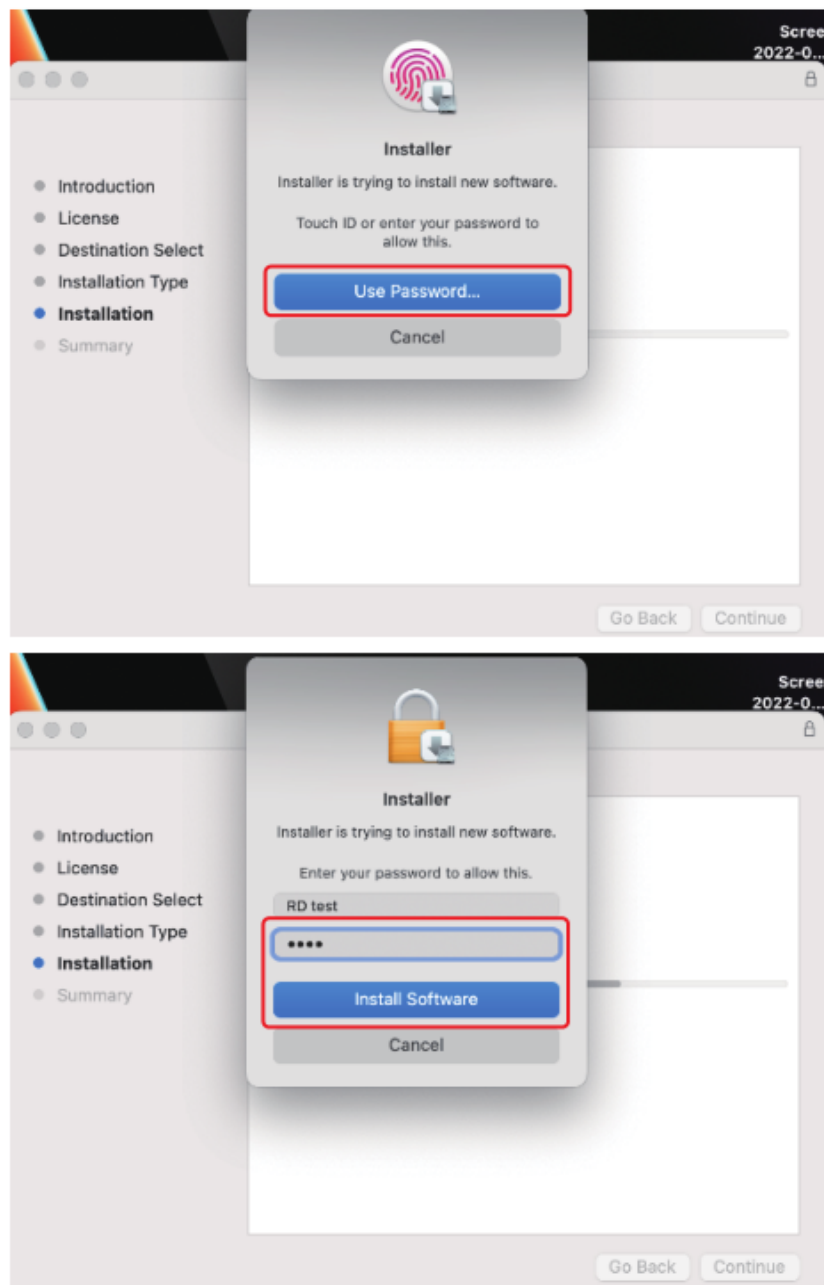
1. Double-click the driver file you just downloaded, navigate to the **Install DisplayLink Manager** window, click **Continue**.



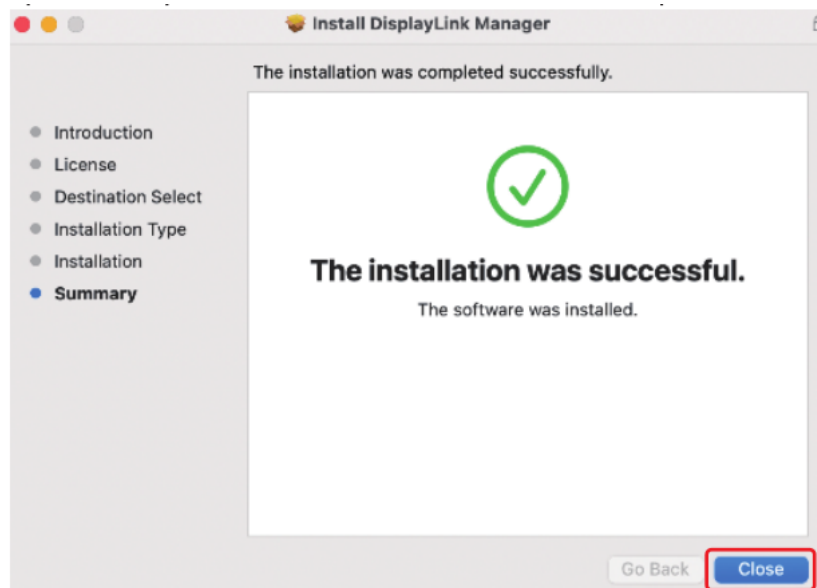
2. Click **Continue** to the next window, then click **Agree**.



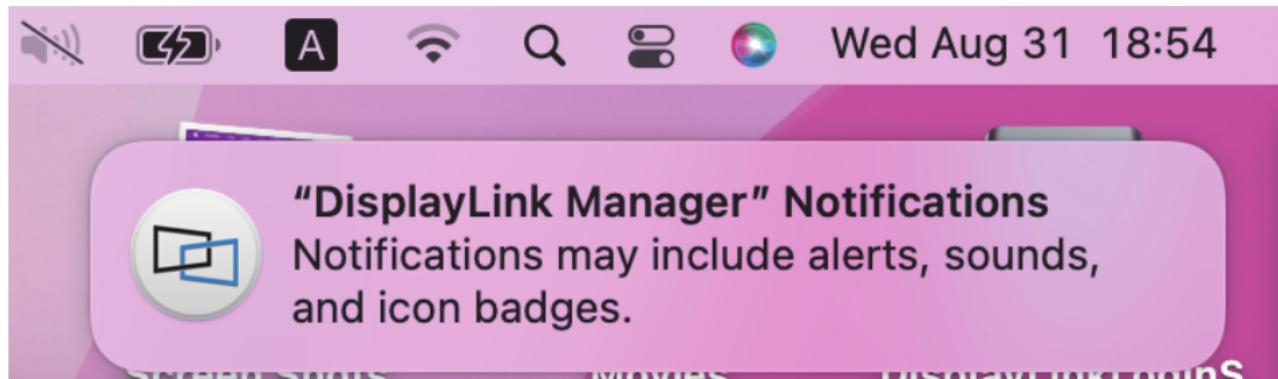
3. Click **Install** and choose **Use Password**, then enter the screen password and click **Install Software**.



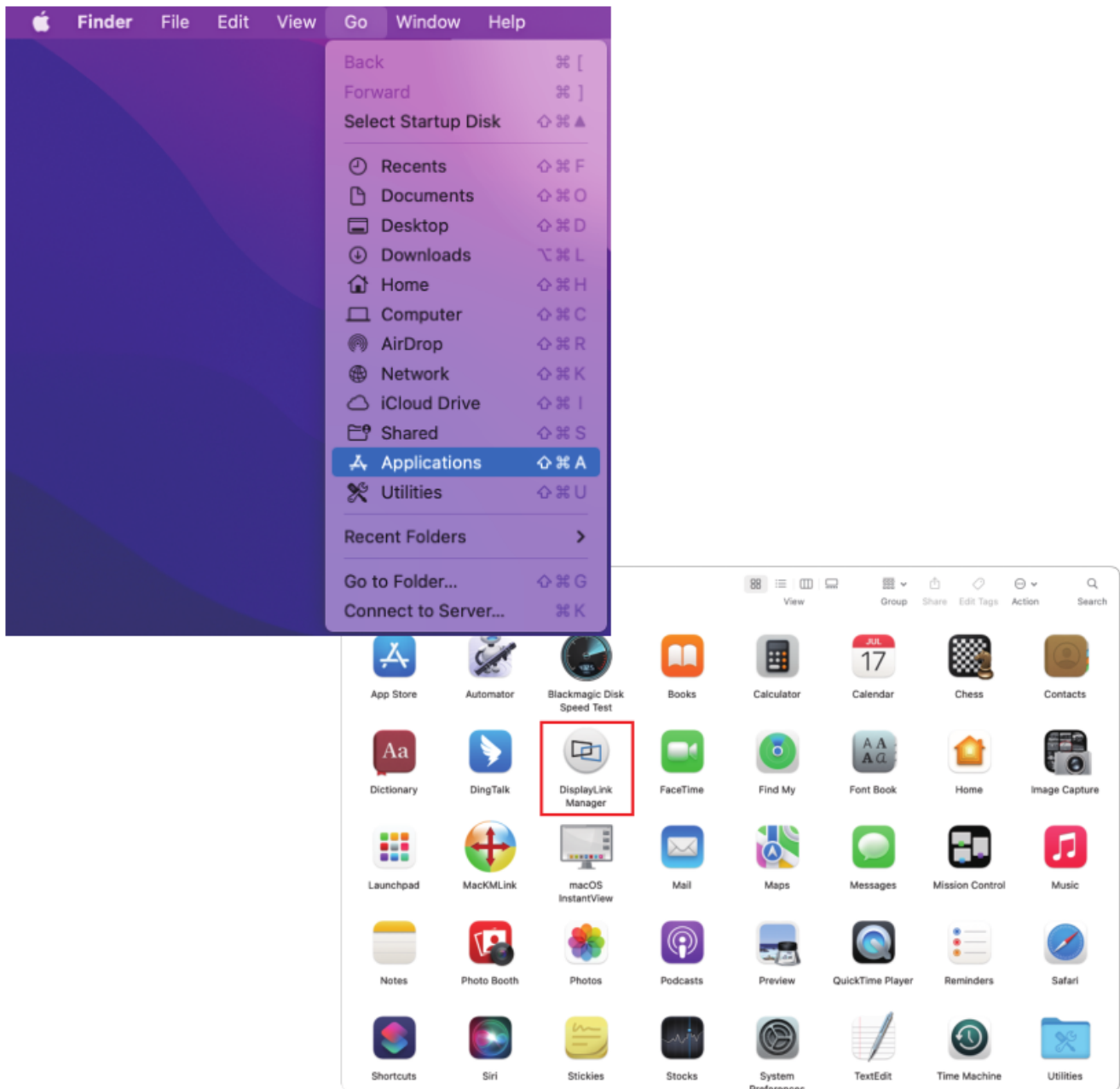
4. Please wait patiently for the installation to complete, then click **Close**.



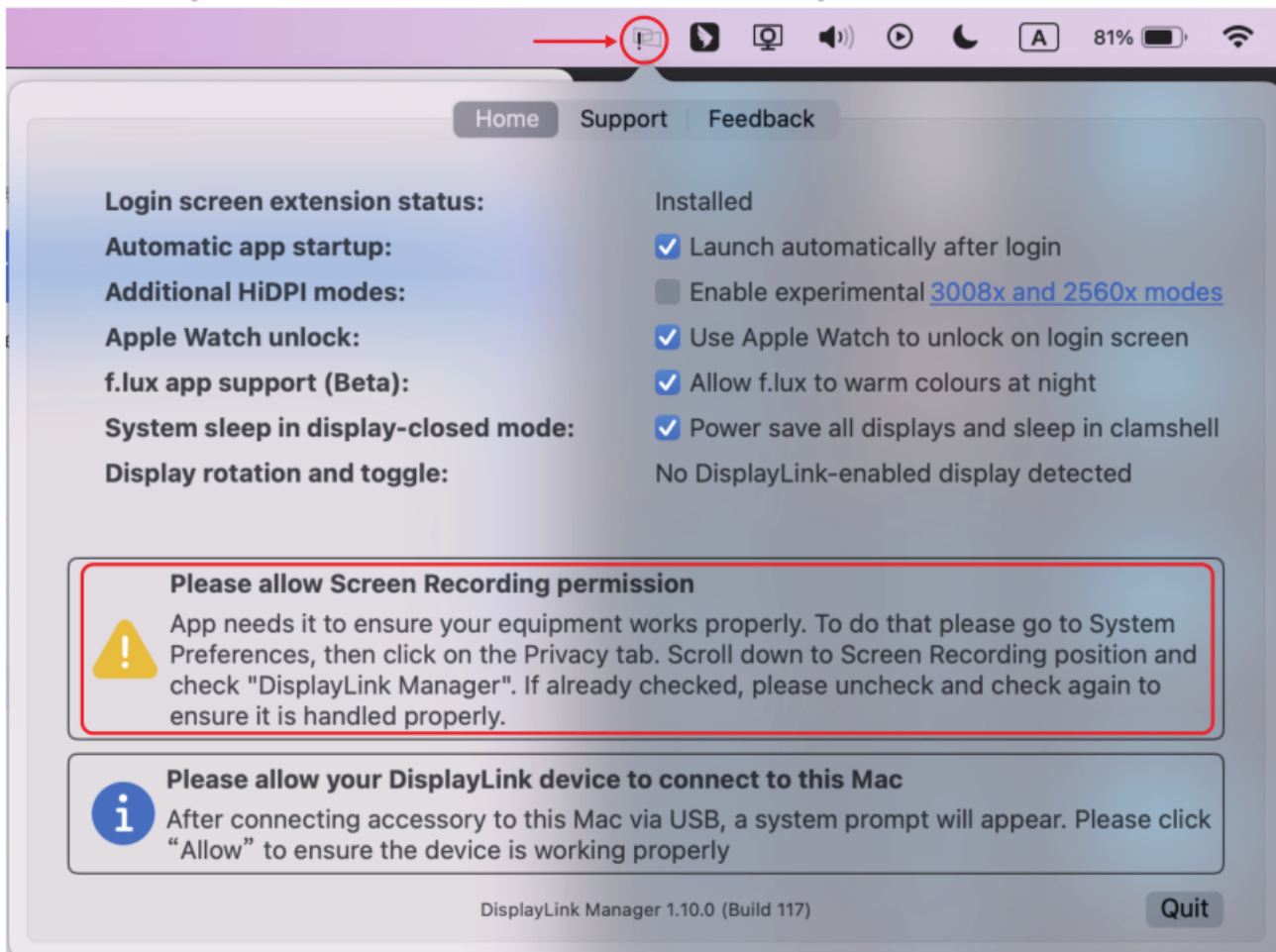
5.If you have enabled notifications from DisplayLink Manager, it will remind you to allow screen recording when it detects that this permission is missing.



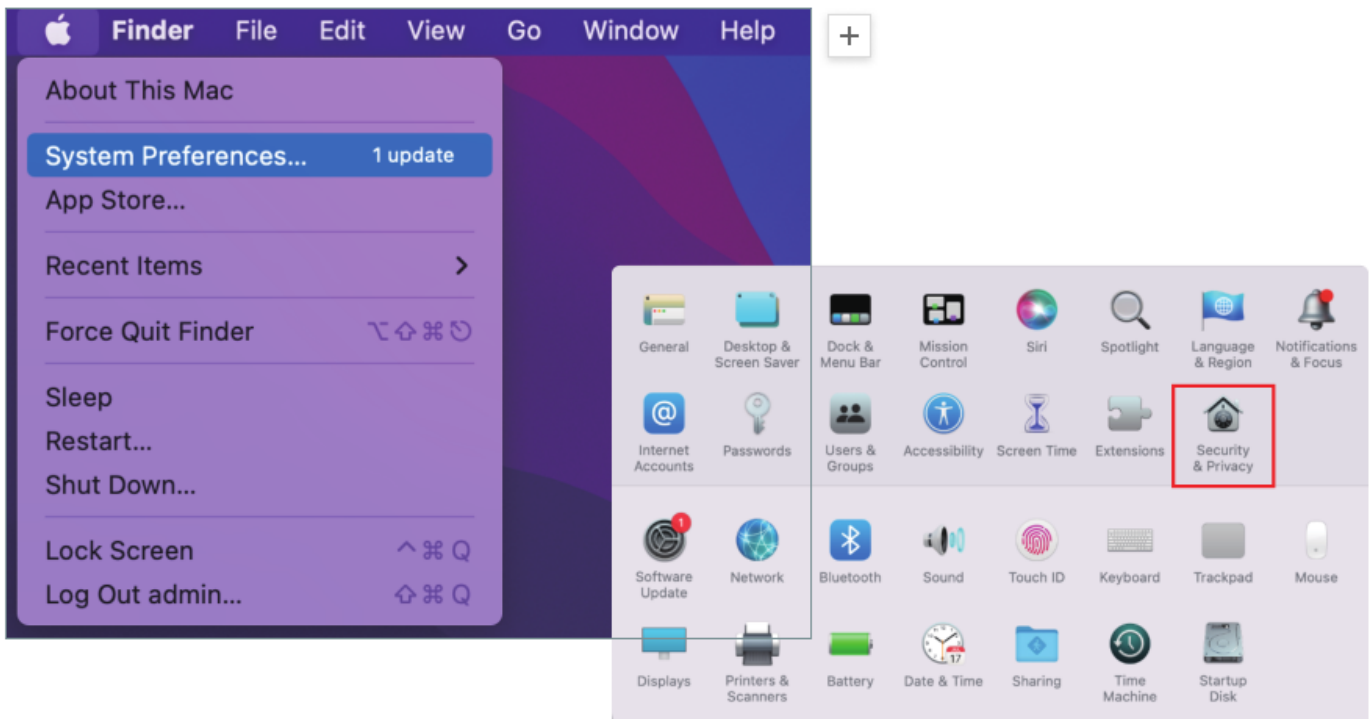
6.If you didn't get the notification from **DisplayLink Manager**, please click **Go** in the function bar at the top left of screen, then select **Applications** and click **DisplayLink Manager**.



7. Click the **DisplayLink Graphics** icon in the function bar at the top right of the screen, and the notification will also appear in the DisplayLink Manager window. A warning is found here, you should allow the screen recording permission for **DisplayLink Manager**.



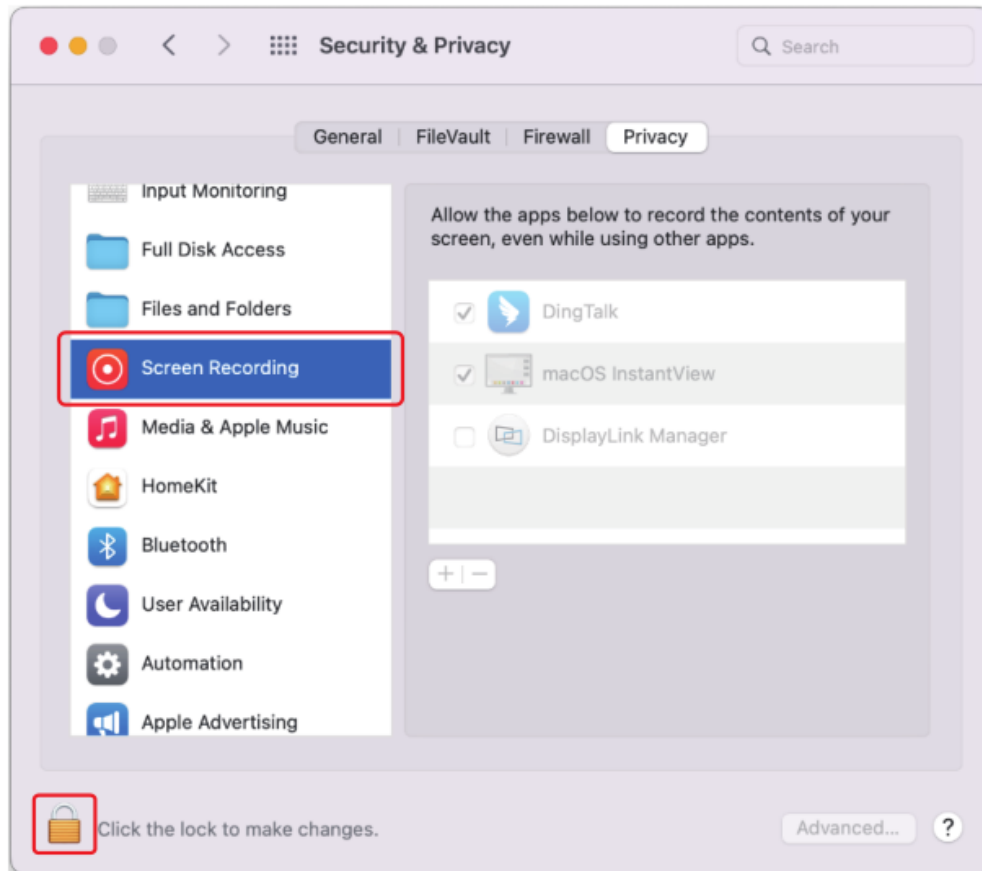
8. Click the **Apple** icon → **System Preferences**, then double click **Security & Privacy**.



9. Enable **Screen Recording** to allow the **DisplayLink Manager** application to capture pixels and send them to your USB peripheral:

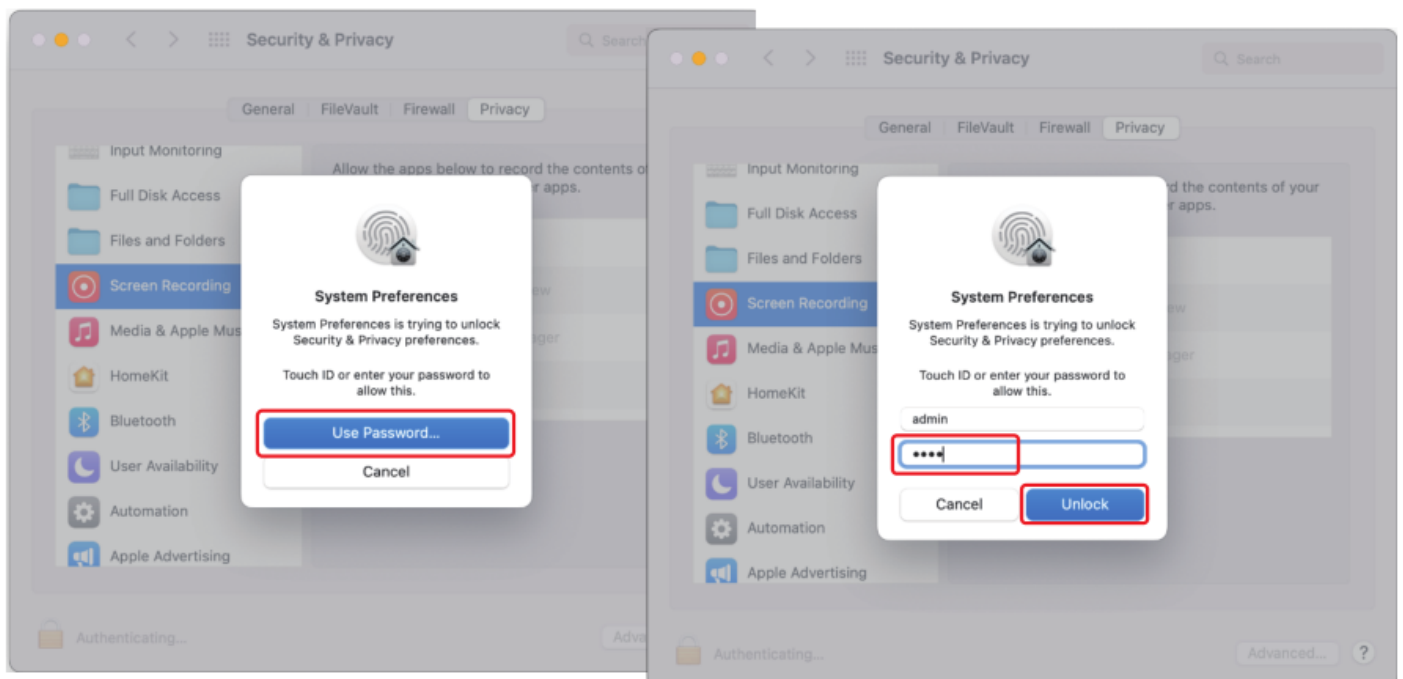
9.1 Select **Screen Recording** in **Privacy** tab.

9.2 Click the **"lock"** icon at the bottom left of the window to unlock.



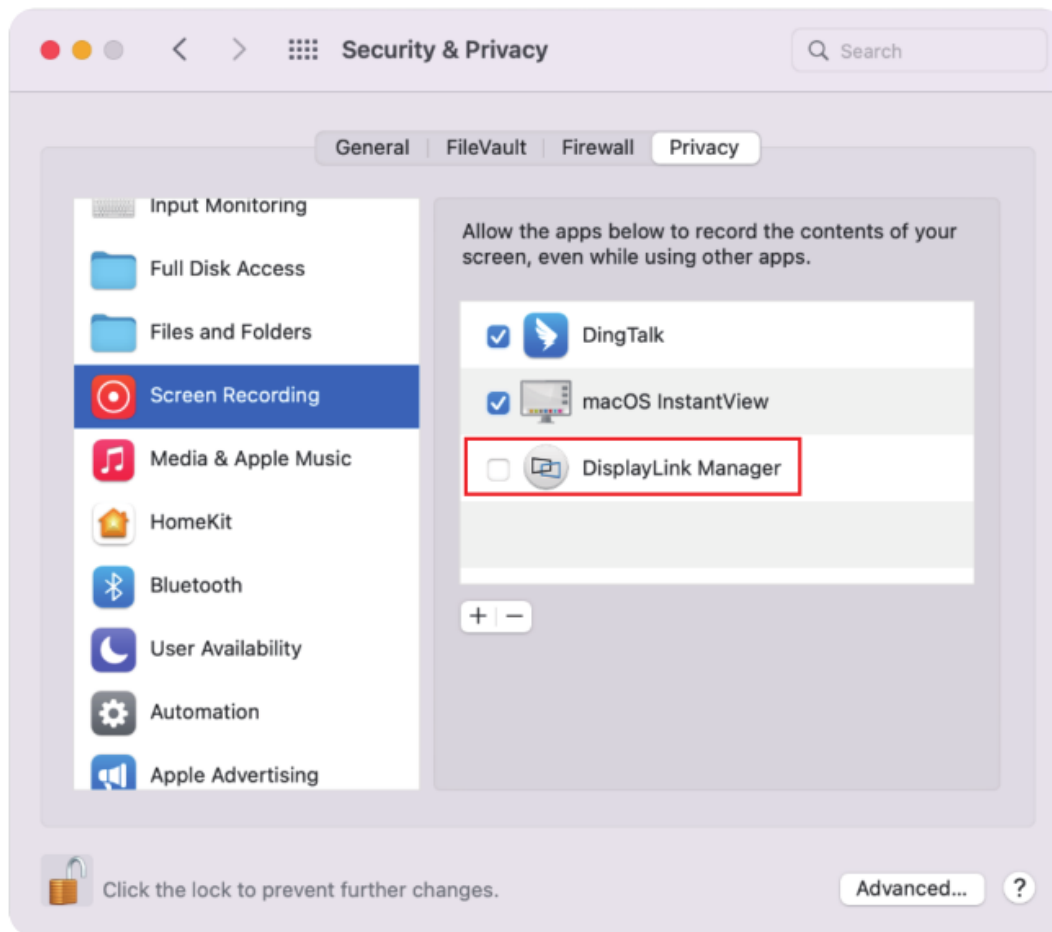
10. When the small window pops up, choose a password or use your fingerprint to unlock.

10.1. If you use password to unlock, and click **Use Password**, then enter your password and choose **Unlock**.

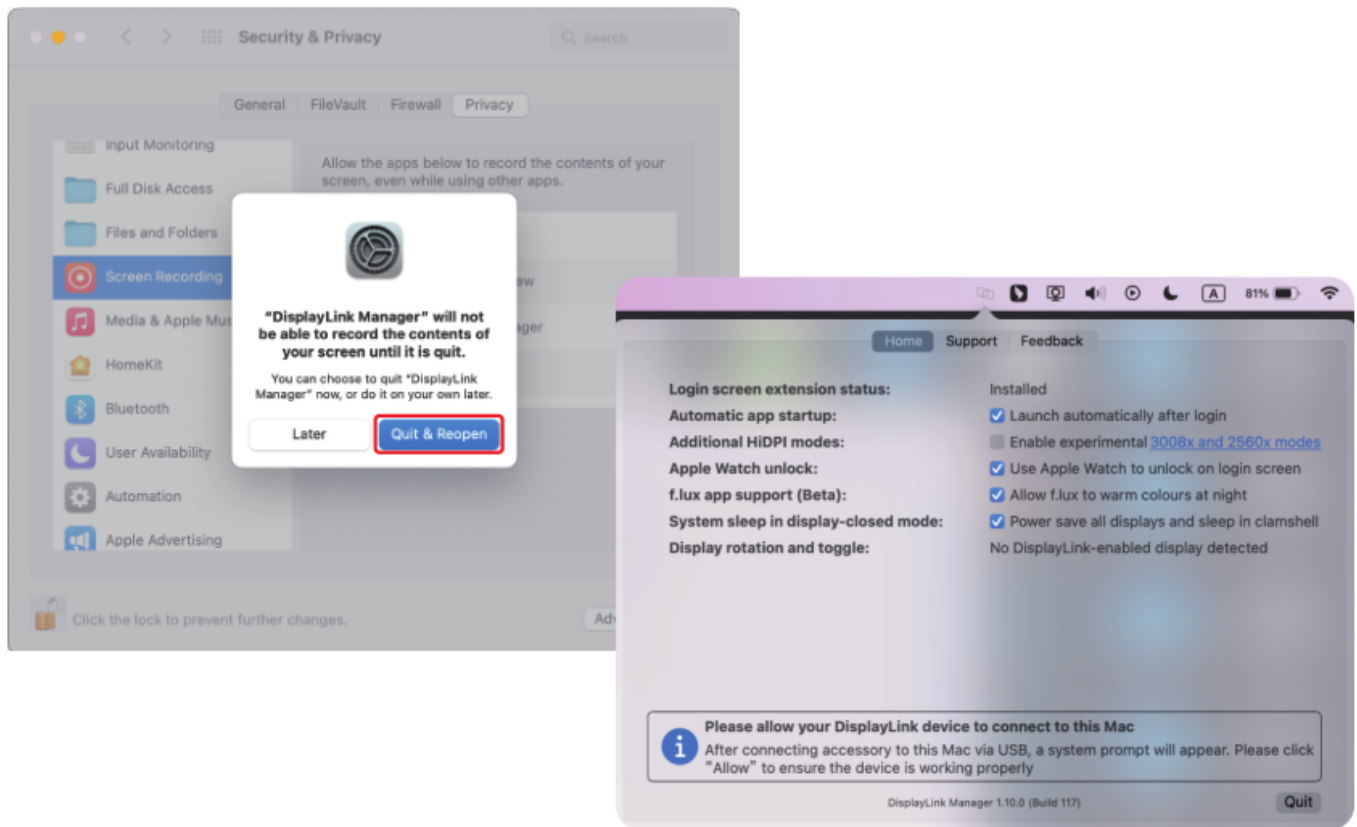


10.2. If you use fingerprint to unlock, it will jump directly to the next step.

11. Check the **DisplayLink Manager** in the right list.



12. Click **Quit & Reopen** to restart the driver, then you can click the **DisplayLink Graphics** icon in the function bar at the top right of the screen to ensure whether the warning has been lifted and whether the driver can work properly.

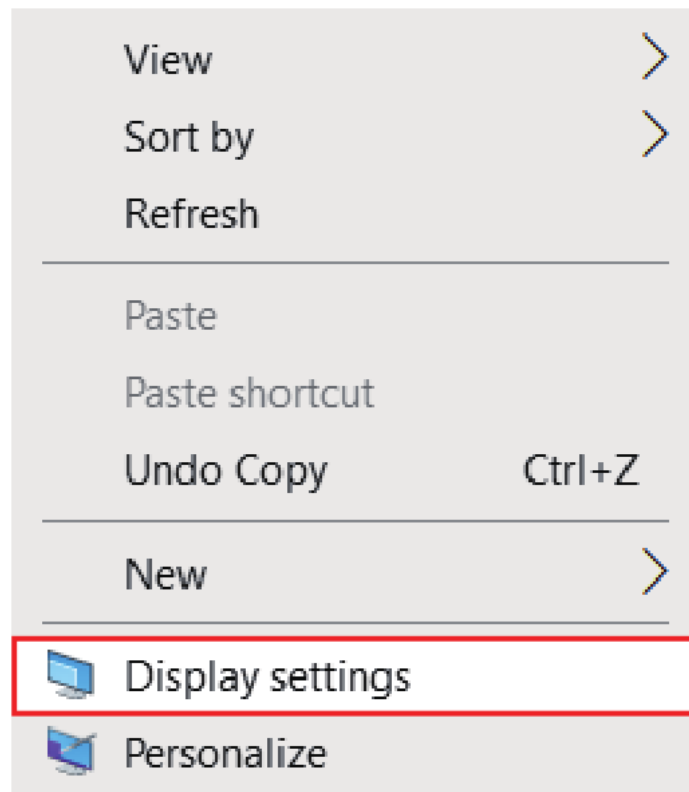


DISPLAY MODE SETTING

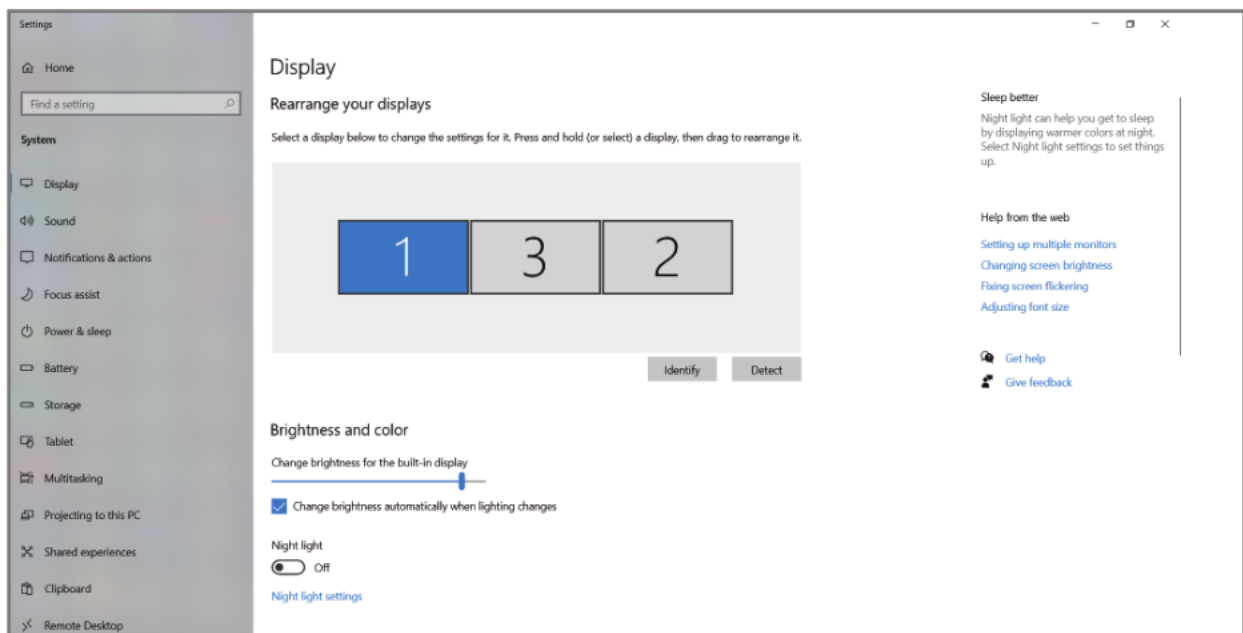
Before configuring the settings, please make sure this docking station has been connected to your laptop and monitors correctly.

For Windows

1.Right-click->**Display settings**.

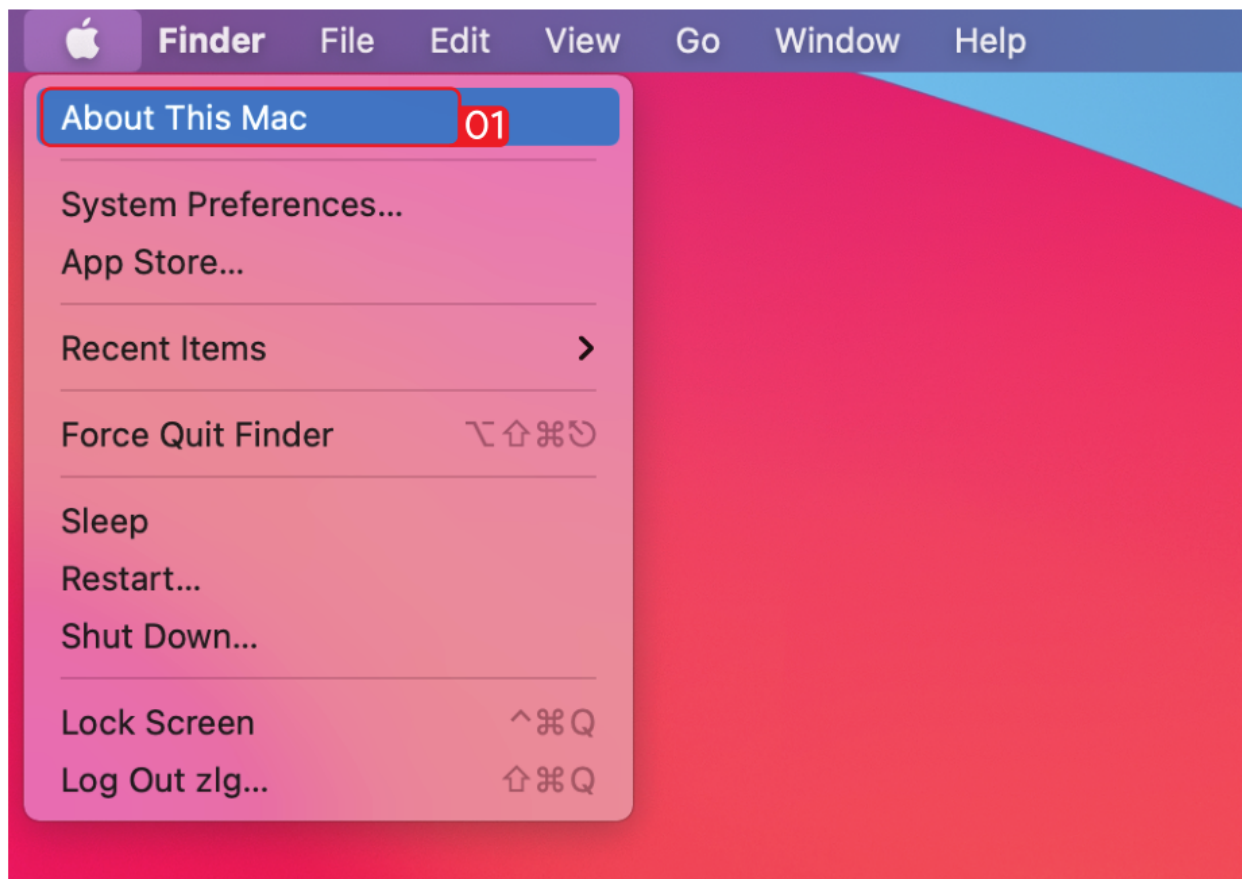


2. In "**Display**", you can enjoy different operations of duplicating, extending and rotating on your monitors.

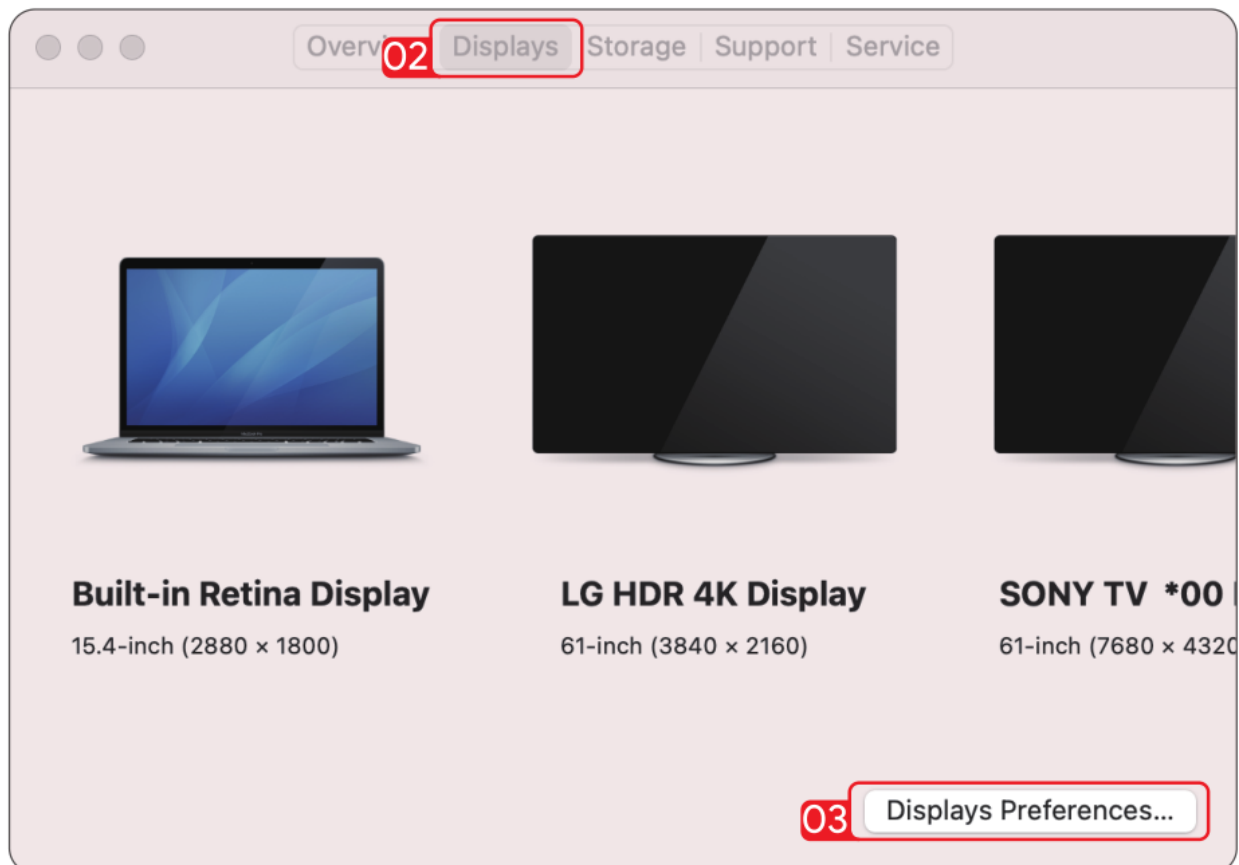


For Mac OS X12 or Below

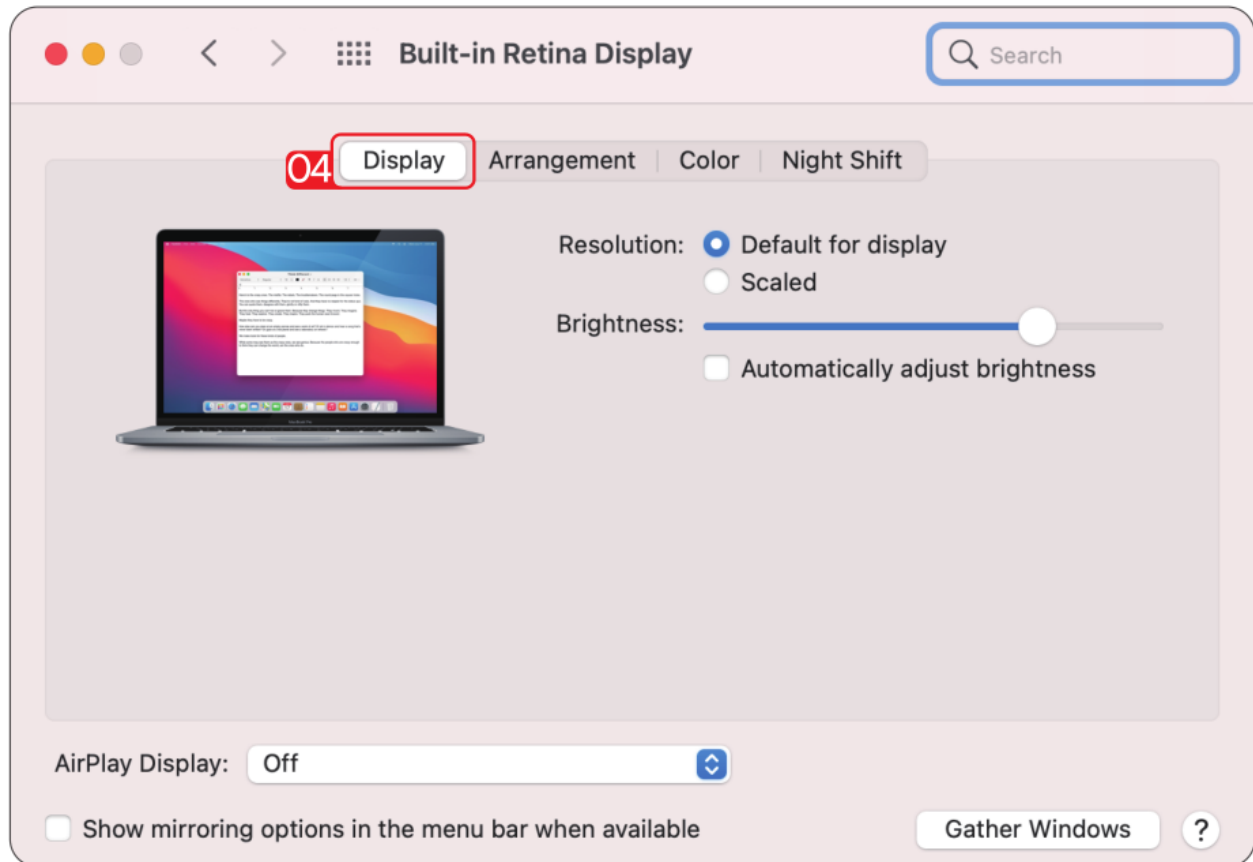
1. Click **Apple** icon -> **About This Mac**.



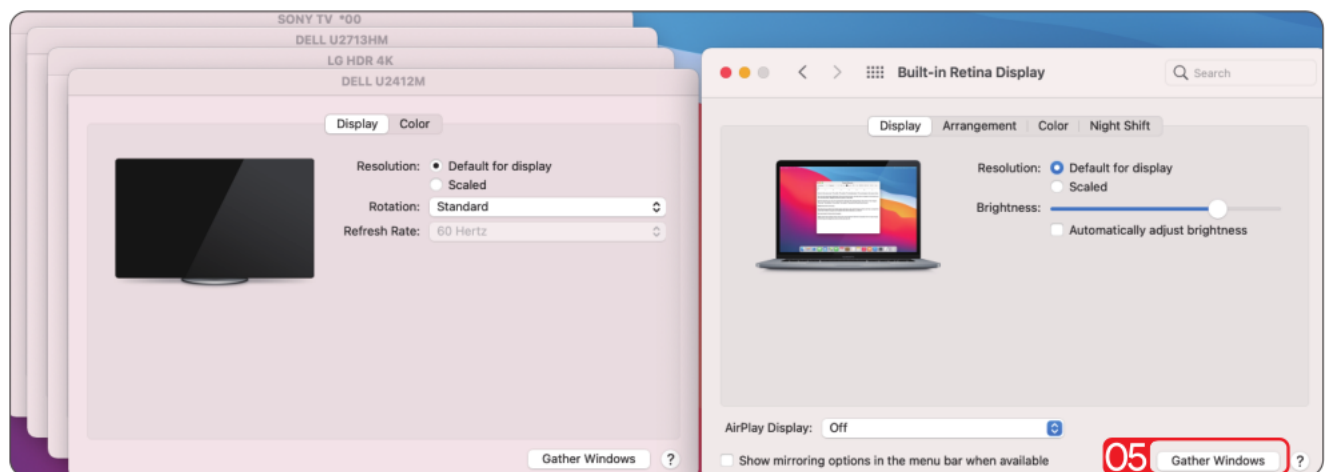
2. Click **Displays**->**Displays Preferences**.



3. Select "**Display**" from the list, then you can enjoy different operations of mirroring, expanding and rotating on your monitors.

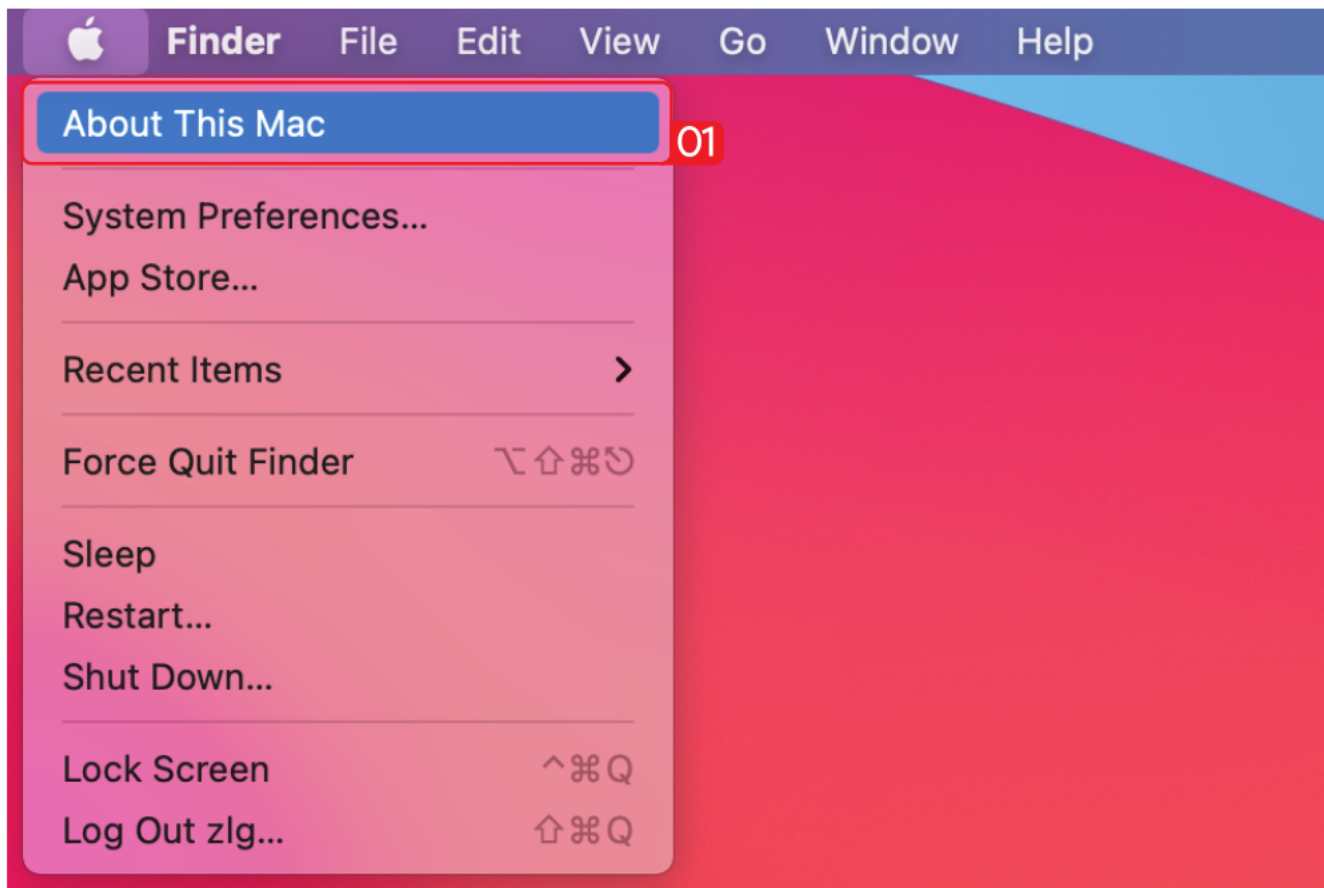


4. Or click "**Gather Windows**" to gather all connected displays and make separate settings.



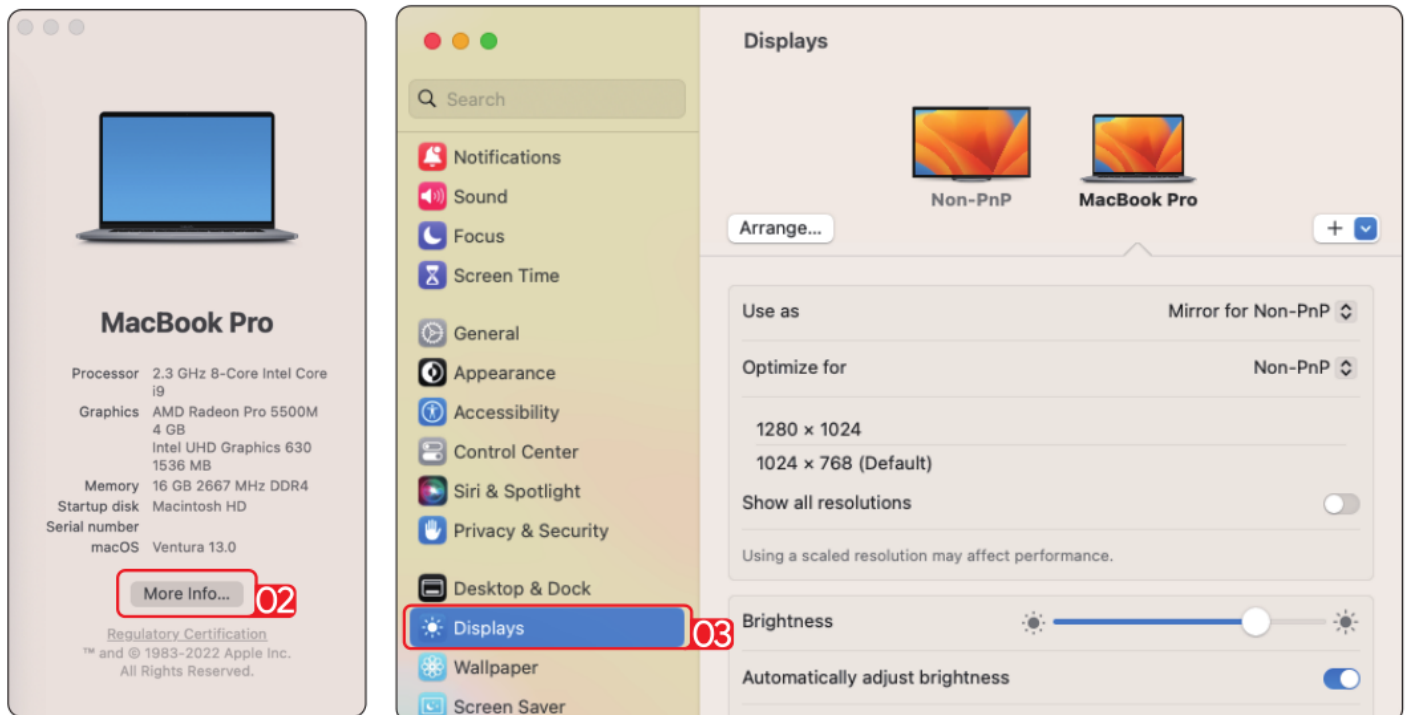
For Mac OS X13

1. Click **Apple** icon -> **About This Mac**.



2. Click "**More Info...**"

3. Select "**Displays**" from the list, then you can enjoy different operations of mirroring, expanding and rotating on your monitors.



Chapter 4 FAQ

This chapter introduces the FAQ and aftersale service.

It contains the following sections :

- [FAQ](#).
- [Aftersale Service](#)

FAQ

Q1. Why when I install the app for my Macbook, the App want to record my screen?

A1. macOS requires the user to permit "Screen Recording" for DisplayLink driver to work properly. But the DisplayLink Manager will not send any information to the WAVLINK and the Displaylink/synaptics. Please do not worry about that.

Q2. Why the apple tv, hulu, netflix could not play when the docking is connected?

A2. The docking could not support hdcp, the protected content such as apple tv, hulu, netflix could not play when the docking is connected. And it is as expected. Please disconnect the docking when you are playing these video. Or you could also try to use the Chrome browser to watch these video and disable the Hardware Acceleration.

Aftersale Service

Need help?

We're here for you!



Online support: wavlink.com

Available Mon-Fri 8:30 am-5:30pm (UTC+8)



support@wavlink.com

Available Mon-Fri 8:30 am-5:30pm (UTC+8)



+1 8889730883 (US Local)

Mon-Fri 9:00 am - 10:00 pm (UTC-5)

www.wavlink.com



**Thank you for purchasing
WAVLINK product!**