

WAVLINK



see the world

User Manual

10 Gigabit PCIe 3.0 Network Adapter

Model: WL-NWP004

@WavlinkOfficial

@WavlinkTechSupport

Table of contents:

- About This Guide
 - Conventions
 - More Info
 - Performance Disclaimer
 - Safety Instructions
 - Copyright Statement
 - WEEE Directive & Product Disposal
- Chapter 1 Overview
 - Overview
 - Package Content
 - System Requirement
 - Product Overview
- Chapter 2 LED Indication
 - LED Indication
- Chapter 3 Hardware Connection
 - Hardware Connection
- Chapter 4 Driver Installation
 - Driver Installation
- Chapter 5 Network Connection
 - Network Connection
- Chapter 6 FAQ and After-sale Service
 - FAQ and After-sale Service
 - FAQ
 - After-sale Service

About This Guide

This guide serves as a companion to the Quick Installation Guide for your wired USB product. The Quick Installation Guide provides essential steps for immediate setup, while this document offers detailed explanations of product features and advanced configuration options.

Please note that product functionality may vary slightly depending on your specific model, software version, geographic region, language, and connected devices. Screenshots, parameters, and descriptions in this guide are for illustrative purposes only.

Conventions

In this guide the following conventions are used :

Convention	Description
<u>Underlined</u>	Underlined words or phrases are hyperlinks. You can click to redirect to a website or a specific section.
Teal	The content and text that needs to be emphasized on the web page is the theme color #1D428A , including menus, items, buttons, etc.
Note:	Critical reminders to prevent operational errors or functionality issues.
Tips:	Best practices or optimization suggestions for enhanced performance.

More Info

The latest driver, firmware and utilities are available from the Download Center at [WAVLINK SUPPORT](#) .

Included in your product packaging or available digitally via the link above.

If you encounter any issues, please don't hesitate to email contact@wavlink.com/techsupport@wavlink.com/postsales@wavlink.com to provide feedbacks or contact online customer service, thank you !

Performance Disclaimer

The maximum transfer speeds stated for this product are based on theoretical limits of USB specifications (e.g., USB 2.0/3.0/3.1 Gen 1/Gen 2). Actual performance may vary due to:

Device limitations: Host system performance, driver compatibility, and connected device capabilities.

Environmental factors: USB cable quality, length, electromagnetic interference, and port power delivery.

Network/software conditions: Operating system overhead, background processes, and concurrent data transfers.

Wired connections are generally more stable than wireless alternatives, but performance is not guaranteed and depends on the factors listed above.

Information in this document is subject to change without notice. The manufacturer does not make any representations or warranties (implied or otherwise) regarding the accuracy and completeness of this document and shall in no event be liable for any loss of profit or any commercial damage, including but not limited to special, incidental, consequential, or other damage.

Safety Instructions

Always read the safety instructions carefully.

Keep this Quick Start Guide for future reference.

Keep this equipment away from humidity.

If any of the following situation arises, get the equipment checked by a service technician:

□ The equipment has been exposed to moisture.

□ The equipment has been dropped and damaged.

□ The equipment has an obvious sign of breakage.

□ The equipment has not been working well or you cannot get it work according to Quick start Guide.

Copyright Statement

No part of this publication may be reproduced in any form by any means without the prior written permission.

Other trademarks or brand names mentioned herein are trademarks or registered trademarks of their respective companies.

WEEE Directive & Product Disposal

At the end of its serviceable life, this product should not be treated as household or general waste. It should be handed over to the applicable collection point for the recycling of electrical and electronic equipment, or returned to the supplier for disposal.



Chapter 1 Overview

This chapter contains the following sections :

- [Package Content](#)
- [System Requirement](#)
- [Product Overview](#)

Overview

Package Content

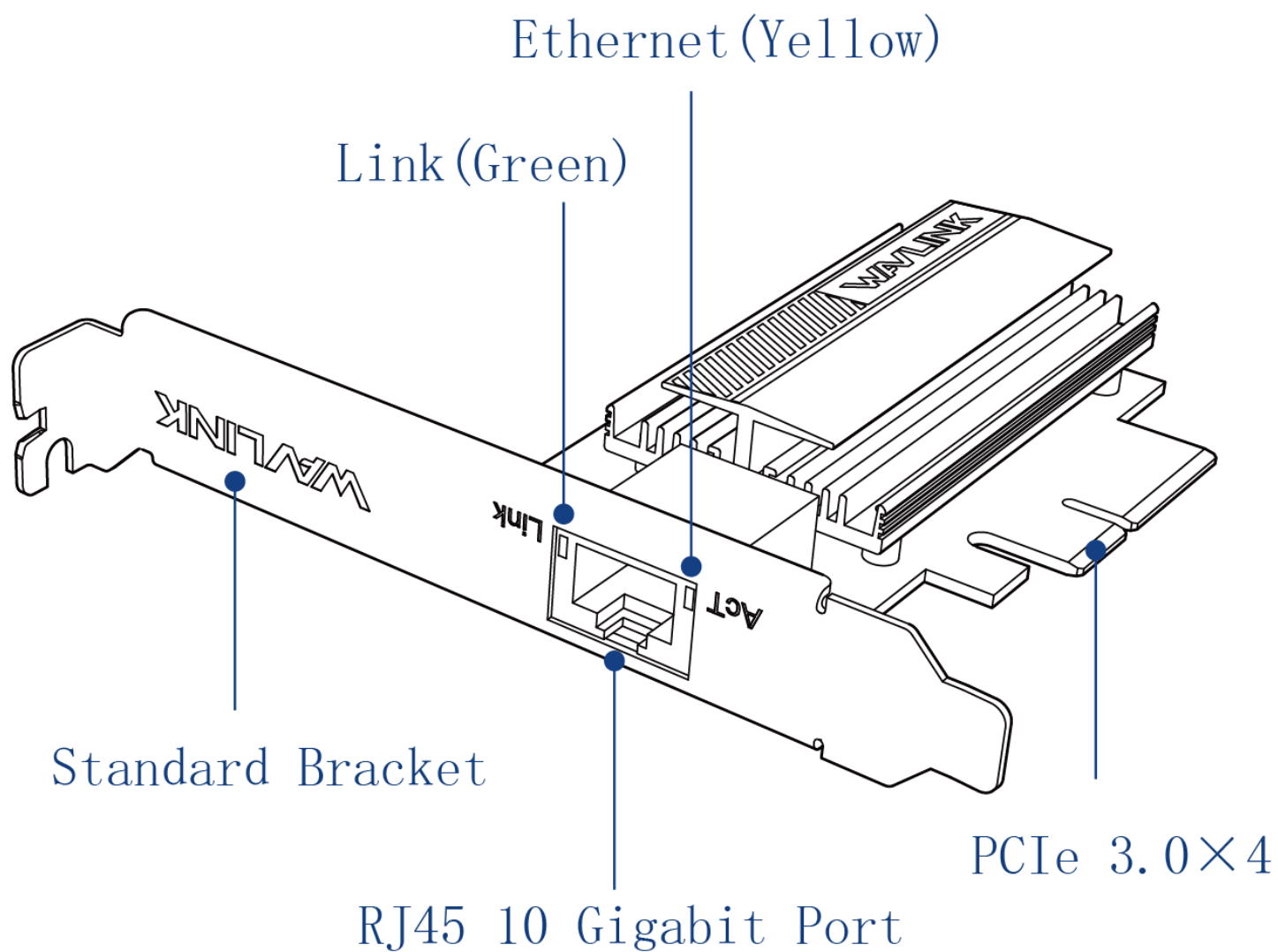
This Network Adapter includes the following items, please check it before using.

- 1× 10 Gigabit PCIe 3.0 Network Adapter
- 1× Low-Profile Bracket
- 1× Quick Start Guide

System Requirement

- Microsoft Windows 10/11
- Linux 3.10 and higher

Product Overview



Chapter 2 LED Indication

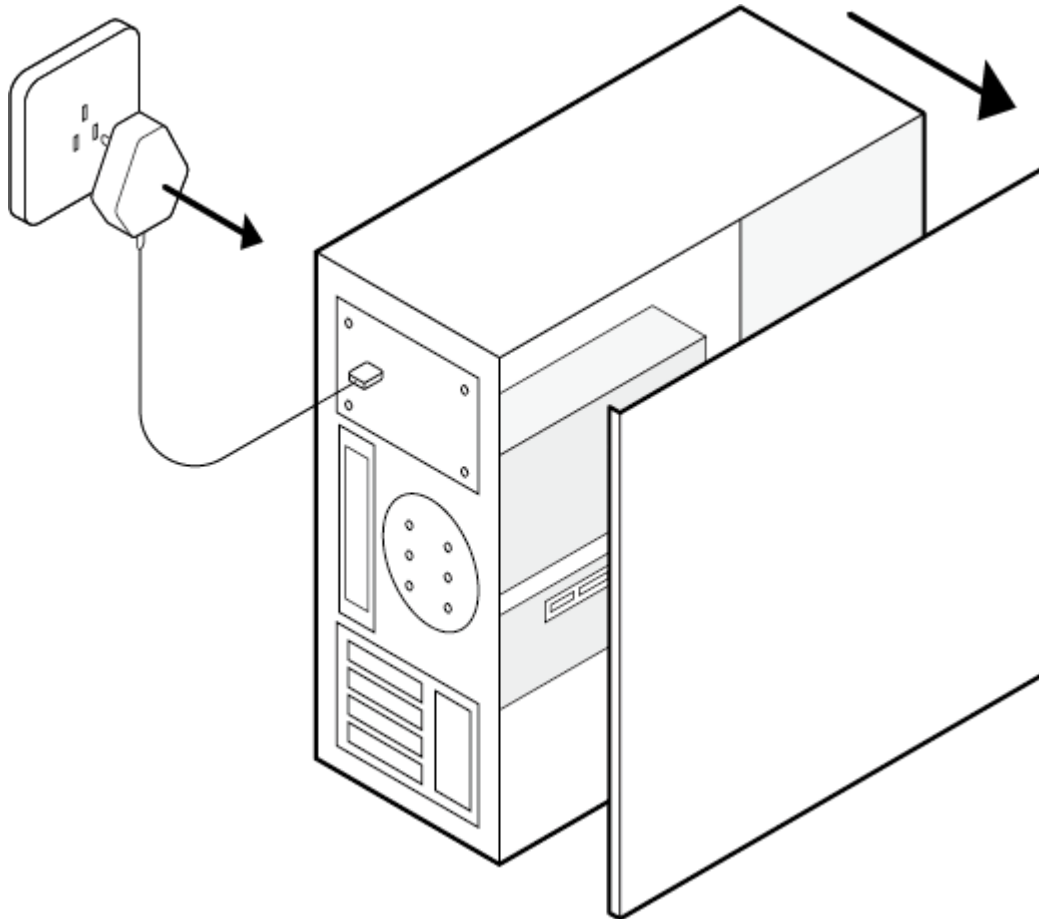
LED Indication

LED	Color&Status	Network
LINK	Yellow, Solid	The connection is active at speeds of 5G/2.5G/1G/100Mbps/10Mbps.
LINK	Green, Solid	The connection is active at 10Gbps speed.
ACT	Green, Flashing	Data is being actively transferred over the network.

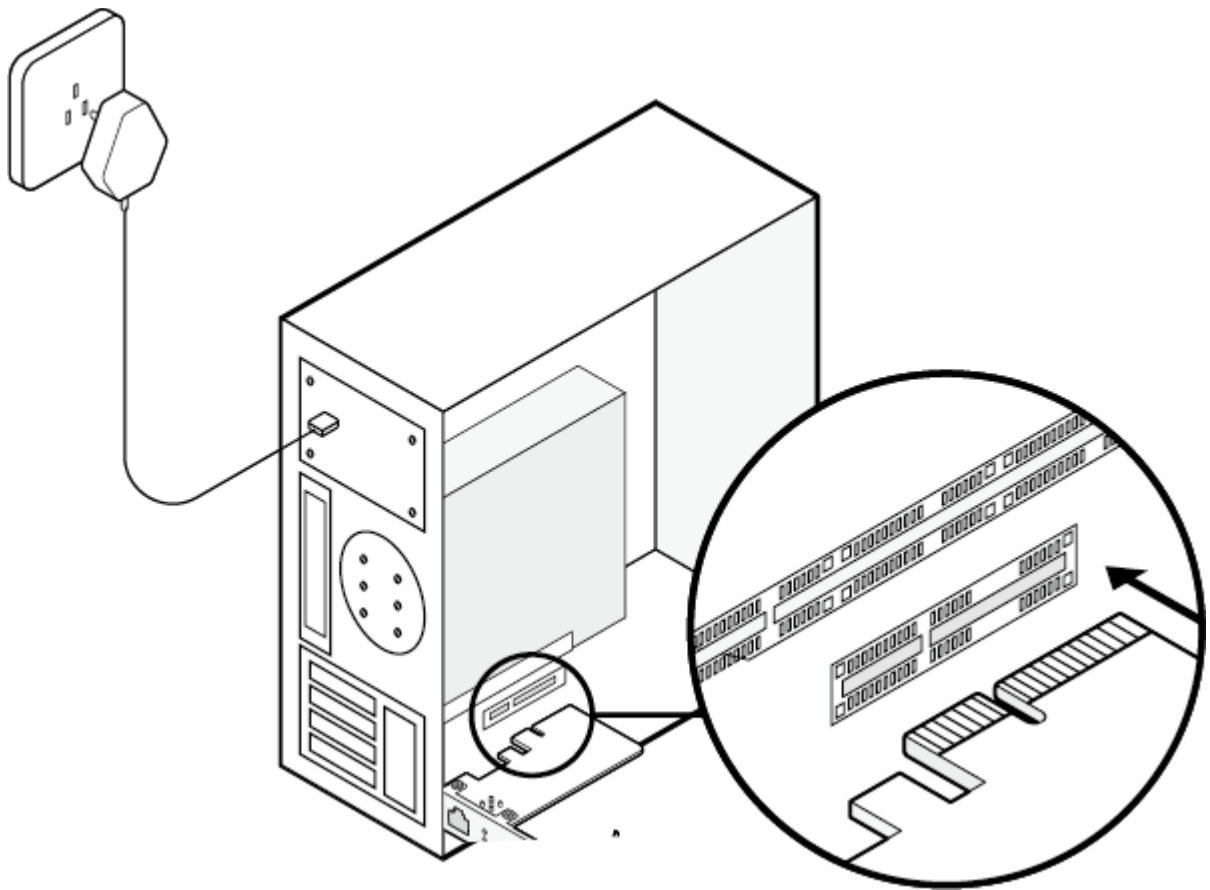
Chapter 3 Hardware Connection

Hardware Connection

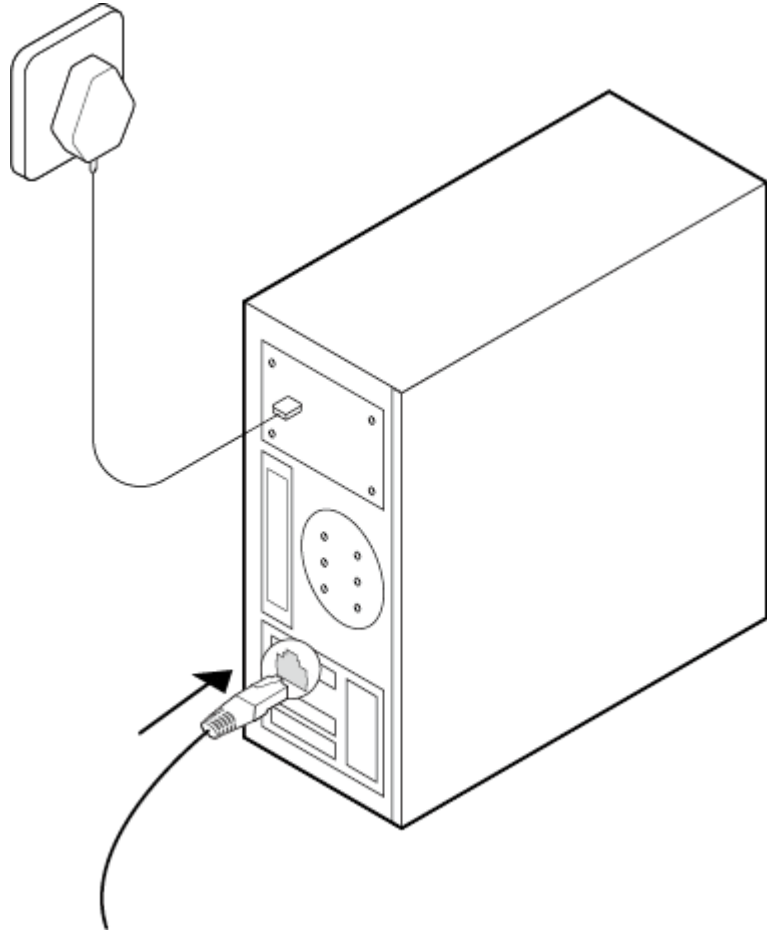
1. Please shut down your computer, disconnect the power supply, and remove the case cover.



2. Identify an available PCIe slot on your motherboard and securely insert the network card adapter.



3. After the adapter is in place, replace the case cover, reconnect the power supply, and power on your computer.



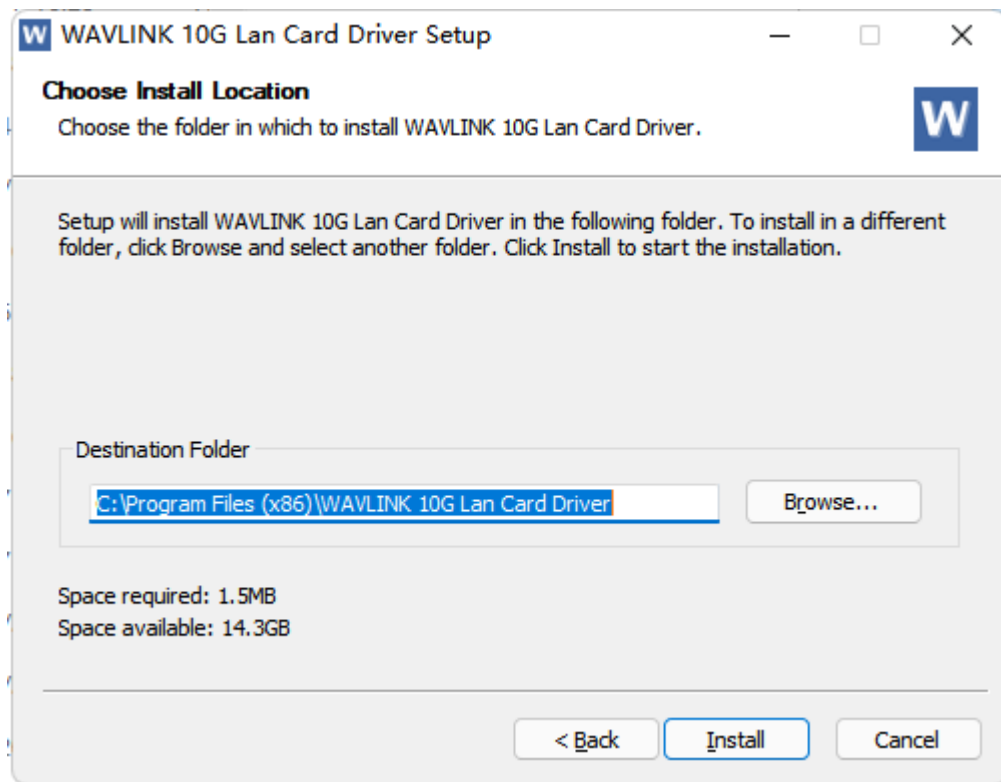
Chapter 4 Driver Installation

Driver Installation

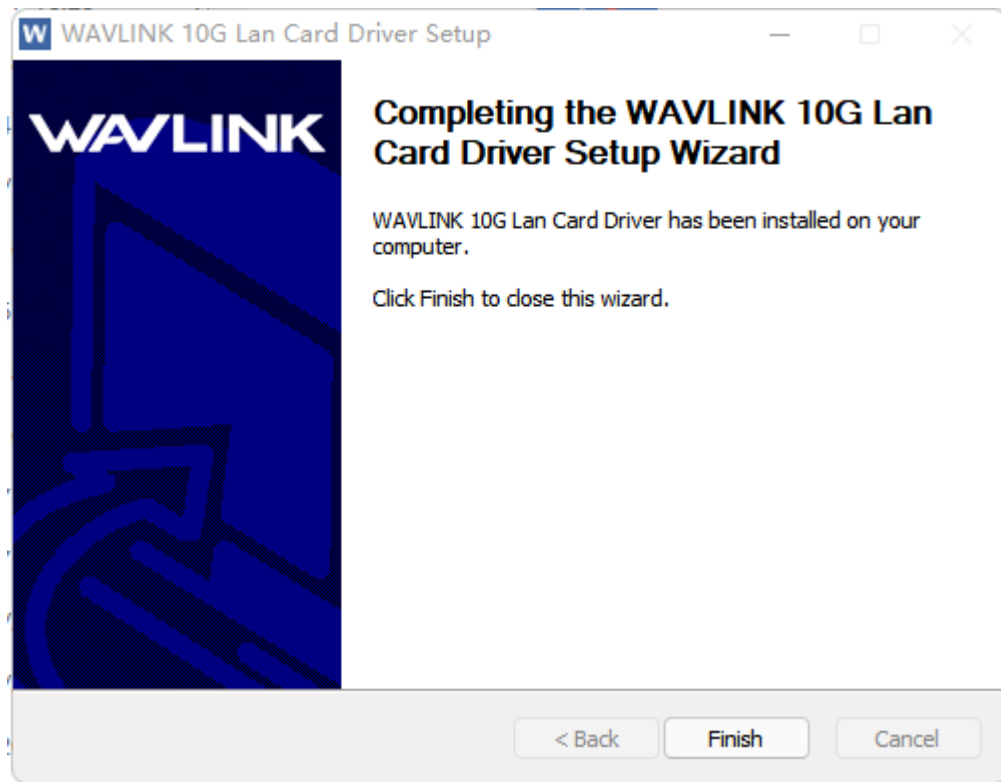
1. Download WAVLINK 10G Lan Card Driver from www.wavlink.com > SUPPORT > Driver or www.wavlink.com/en_us/WL-NWP004.
2. Extract **WAVLINK 10G Lan Card Driver Installation.exe** from the file, and double click it to start up the installation.
3. Click **Next**.



4. Click **Browse** to choose install file location, and click **Install**.



5. Click **Finish** to complete the installation.



Chapter 5 Network Connection

Network Connection

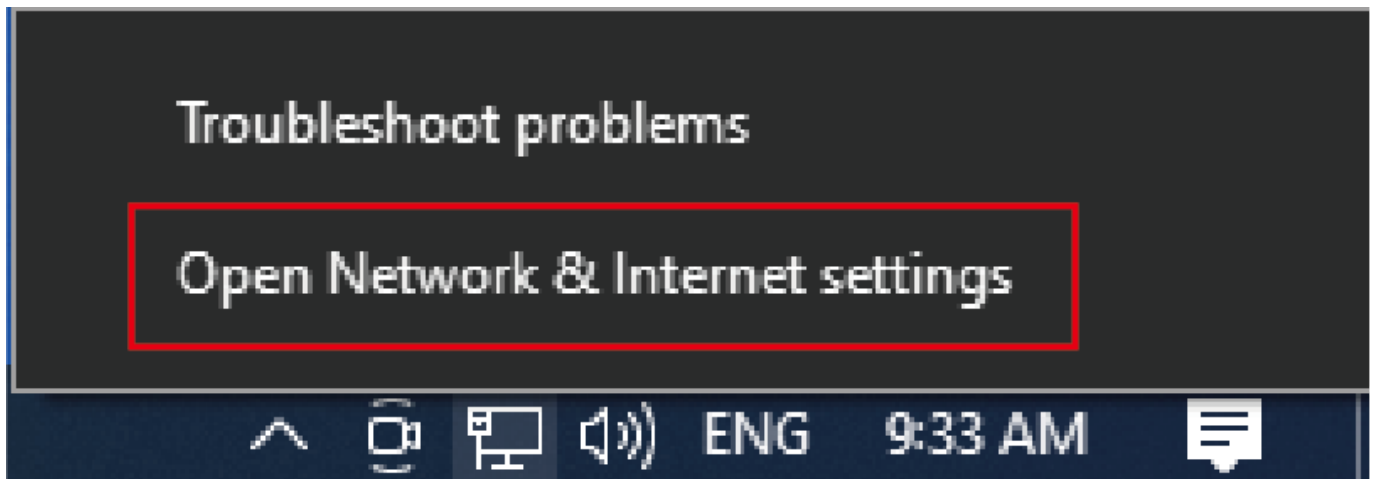
Now you can connect your network device, switch router, DSL/Cable modem, e.g, to the adapter's LAN port via an Ethernet cable.

Notes on Ethernet Cables

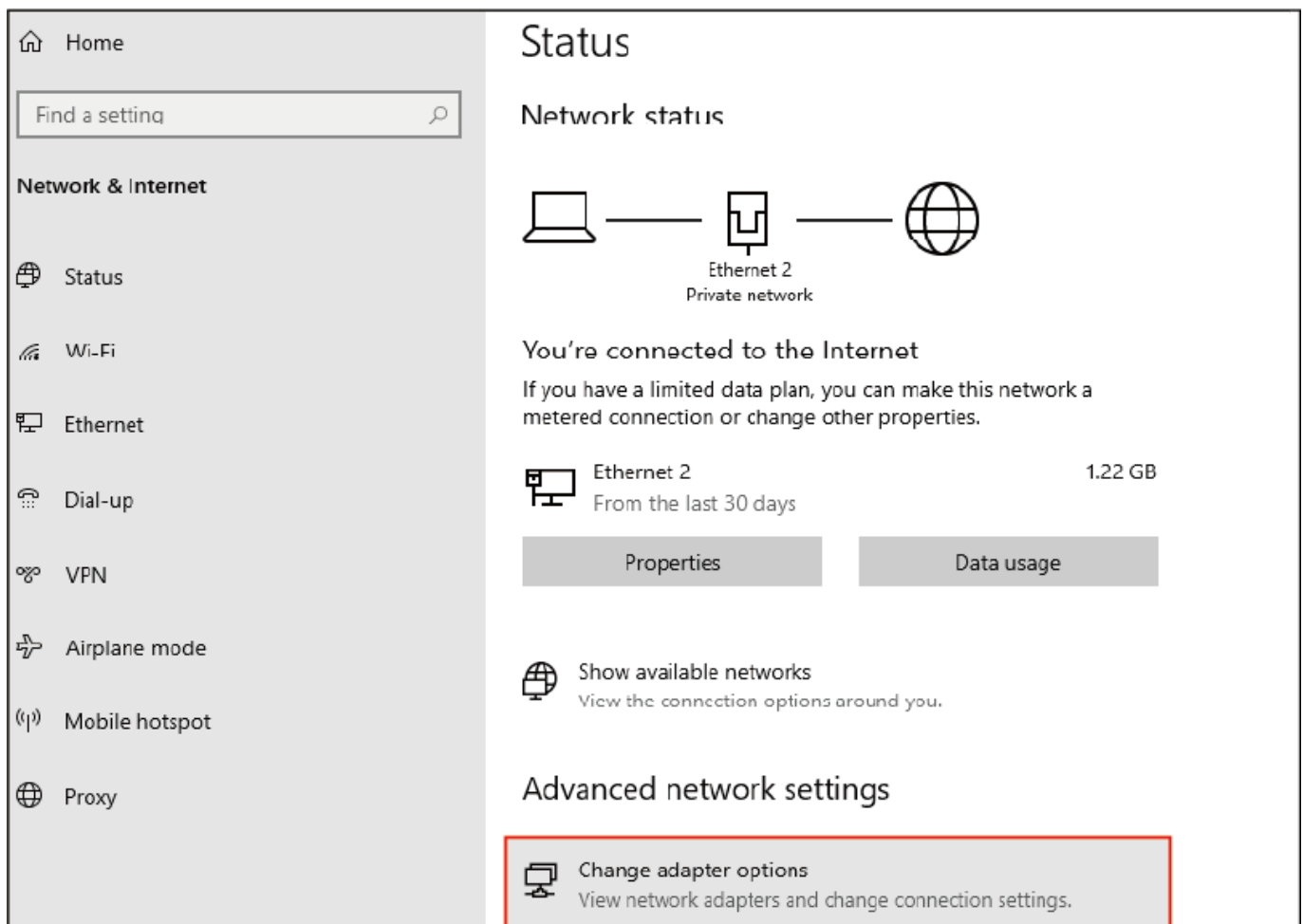
- Sometimes a so-call crossover Ethernet cable is required for connection to certain network equipments. As the adapter's LAN port supports Auto-MDIX feature, it eliminates the need to use crossover cables.
- When the Ethernet adapter is used in the 10G network, it's recommended that you use Category 7 Ethernet cable for higher transmission speed. The adapter's AutoSense feature can automatically detect the network's maximum line speed. To have a 1000/2500/5000/10000Mbps connection, your network device (e.g., switch,router or DSL modem) must also support 1000/2500/5000/10000Mbps.

On Windows 10, you can view the connection speed by the steps below:

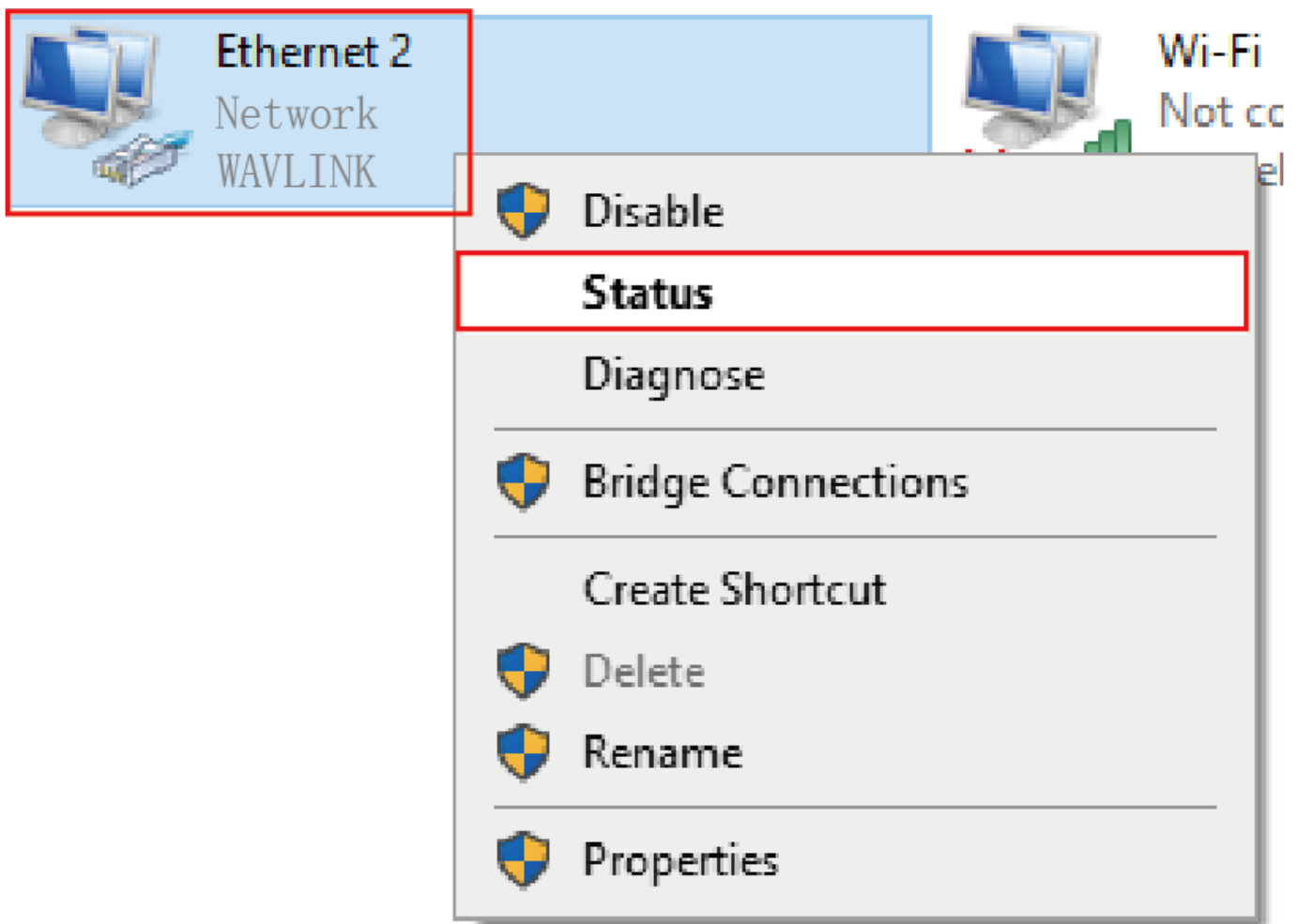
1. Right-click the network icon in the system tray and select **Open Network&Internet settings**.



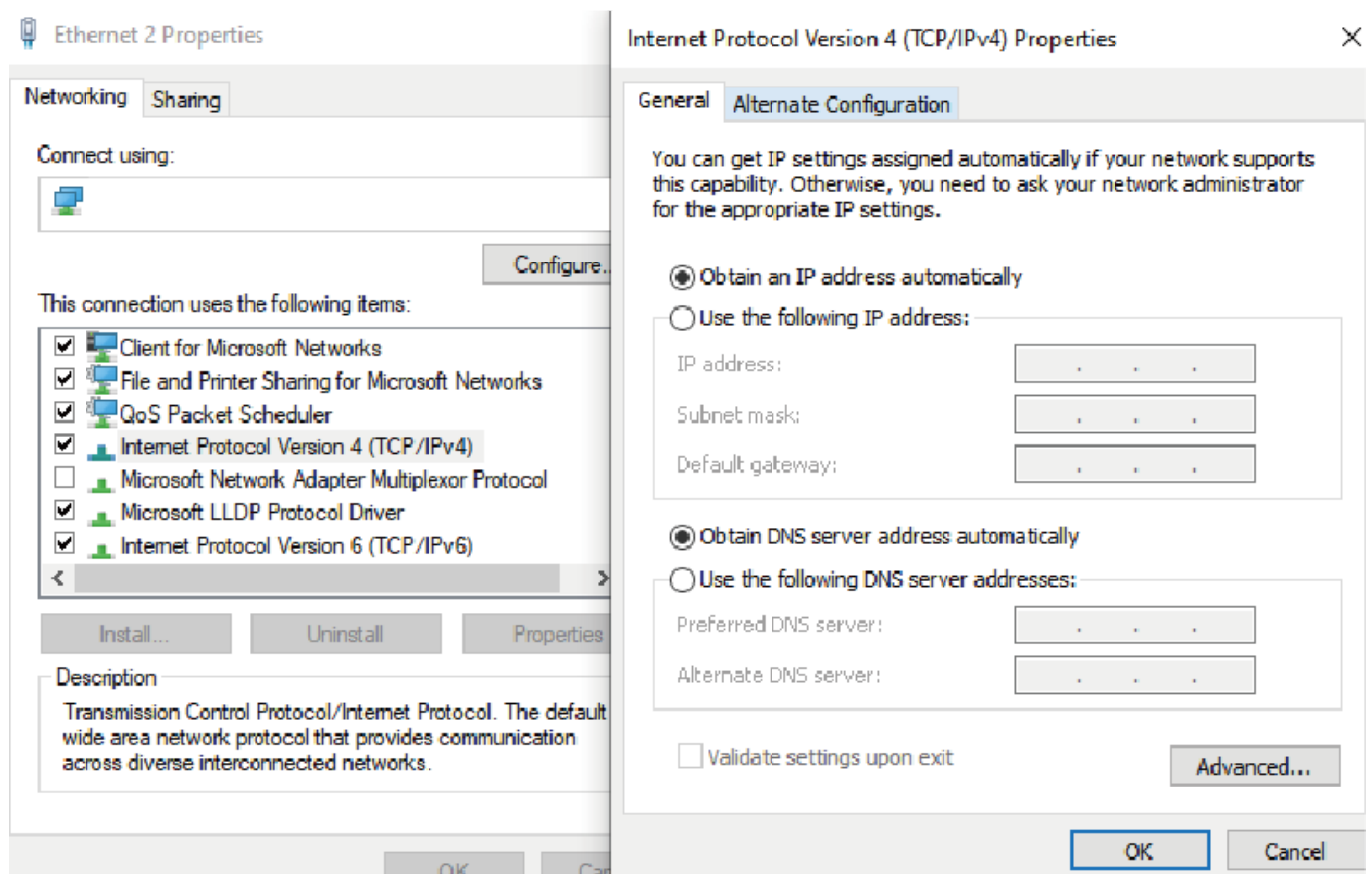
2. Click **Change adapter options**.



3. Right-click the **Ethernet** icon indicating your network adapter and click **Status**.



4. Then the **Ethernet Properties** window appears for user to make required settings.



Chapter 6 FAQ and After-sale Service

This chapter contains the following sections :

- [FAQ](#)
- [After-sale Service](#)

FAQ and After-sale Service

FAQ

Q1. What should I do if my computer cannot find the Adapter?

- Restart your computer and try again.
- Power off the computer PCIe slot.
- If the problem still persists, contact our Technical Support.

Q2. What should I do after installing the 10G Driver manually?

Go to **Device Manager-Network adapters** to select 10G network card, then right-click to select **Properties-Advanced-Connection Speed and Duplex Mode (Speed&Duplex)-Value**, and choose **10G Full Duplex**. After that, please ensure that other hardware supports the 10G bandwidth.

NOTE

For more details, please contact online customer service to request the driver

After-sale Service

Need help?

We're here for you!



Online support: [wavlink.com](https://www.wavlink.com)

Available Mon-Fri 8:30 am-5:30pm (UTC+8)



support@wavlink.com

Available Mon-Fri 8:30 am-5:30pm (UTC+8)



+1 8889730883

Mon-Fri 9:00 am - 10:00 pm (UTC-5)

www.wavlink.com



**Thank you for purchasing
WAVLINK product!**

