

WAVLINK



see the world

User Manual

Thunderbolt™ 5 External Storage

Model: THUNDERLIGHT STOR

@WavlinkOfficial

@WavlinkTechSupport

Table of contents:

- About This Guide
 - Conventions
 - More Info
 - Performance Disclaimer
 - Safety Instructions
 - Copyright Statement
 - WEEE Directive & Product Disposal
- Chapter 1 Overview
 - Overview
 - Package Content
 - System Requirement
 - Product Overview
- Chapter 2 Format and Partition
 - Format and Partition
 - For Windows
 - For Mac
- Chapter 3 FAQ and After-sale Service
 - FAQ and After-sale Service
 - FAQ
 - After-sale Service

About This Guide

This guide serves as a companion to the Quick Installation Guide for your wired USB product. The Quick Installation Guide provides essential steps for immediate setup, while this document offers detailed explanations of product features and advanced configuration options.

Please note that product functionality may vary slightly depending on your specific model, software version, geographic region, language, and connected devices. Screenshots, parameters, and descriptions in this guide are for illustrative purposes only.

Conventions

In this guide the following conventions are used :

Convention	Description
<u>Underlined</u>	Underlined words or phrases are hyperlinks. You can click to redirect to a website or a specific section.
Teal	The content and text that needs to be emphasized on the web page is the theme color #1D428A , including menus, items, buttons, etc.
Note:	Critical reminders to prevent operational errors or functionality issues.
Tips:	Best practices or optimization suggestions for enhanced performance.

More Info

The latest driver, firmware and utilities are available from the Download Center at [WAVLINK SUPPORT](#) .

Included in your product packaging or available digitally via the link above.

If you encounter any issues, please don't hesitate to email contact@wavlink.com / techsupport@wavlink.com / postsales@wavlink.com to provide feedbacks or contact online customer service, thank you !

Performance Disclaimer

The maximum transfer speeds stated for this product are based on theoretical limits of USB specifications (e.g., USB 2.0/3.0/3.1 Gen 1/Gen 2). Actual performance may vary due to:

Device limitations: Host system performance, driver compatibility, and connected device capabilities.

Environmental factors: USB cable quality, length, electromagnetic interference, and port power delivery.

Network/software conditions: Operating system overhead, background processes, and concurrent data transfers.

Wired connections are generally more stable than wireless alternatives, but performance is not guaranteed and depends on the factors listed above.

Information in this document is subject to change without notice. The manufacturer does not make any representations or warranties (implied or otherwise) regarding the accuracy and completeness of this document and shall in no event be liable for any loss of profit or any commercial damage, including but not limited to special, incidental, consequential, or other damage.

Safety Instructions

Always read the safety instructions carefully.

Keep this Quick Start Guide for future reference.

Keep this equipment away from humidity.

If any of the following situation arises, get the equipment checked by a service technician:

- ☐ The equipment has been exposed to moisture.
- ☐ The equipment has been dropped and damaged.
- ☐ The equipment has an obvious sign of breakage.
- ☐ The equipment has not been working well or you cannot get it work according to Quick Start Guide.

Copyright Statement

No part of this publication may be reproduced in any form by any means without the prior written permission.

Other trademarks or brand names mentioned herein are trademarks or registered trademarks of their respective companies.

WEEE Directive & Product Disposal

At the end of its serviceable life, this product should not be treated as household or general waste. It should be handed over to the applicable collection point for the recycling of electrical and electronic equipment, or returned to the supplier for disposal.



Chapter 1 Overview

This chapter contains the following sections :

- [Package Content](#)
- [System Requirement](#)
- [Product Overview](#)

Overview

Package Content

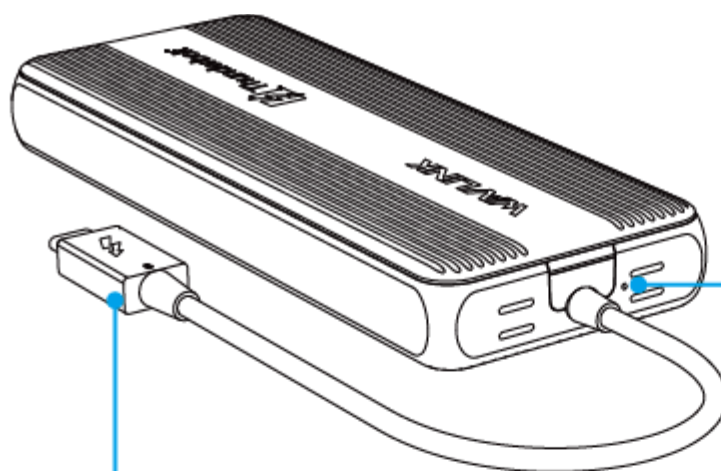
This Thunderbolt 5 external storage includes the following items, please check it before using.

- Thunderbolt™ 5 External Storage
- Quick Start Guide

System Requirement

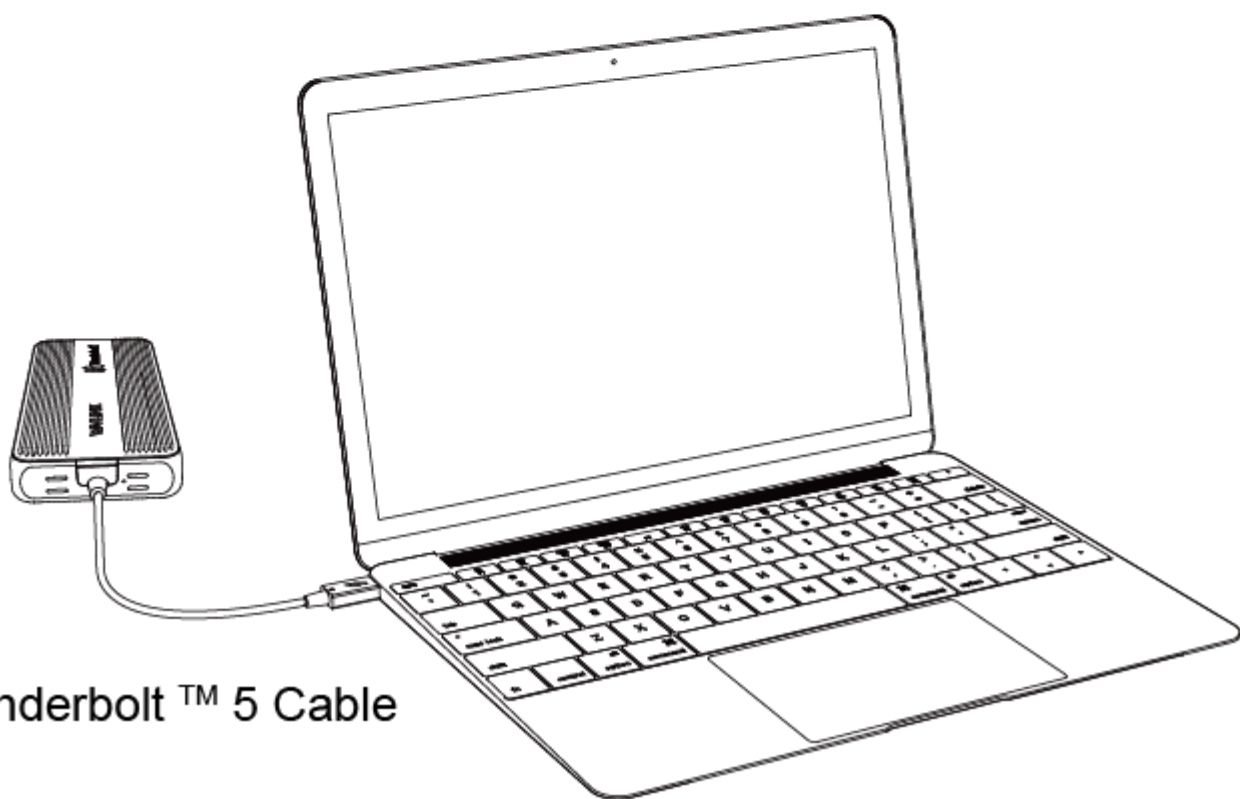
- Windows 11 23H2 (build 22631.3235 and later)
- Mac OS 15.2 or later
- Compatible with Thunderbolt 4/USB4 computers and USB-C 3.2 ports supporting 15W or higher power delivery.

Product Overview



Device Activity
LED Indicator

Thunderbolt™ 5
Upstream Port



Thunderbolt™ 5 Cable

Chapter 2 Format and Partition

This chapter contains the following sections :

- [For Windows](#)
- [For Mac](#)

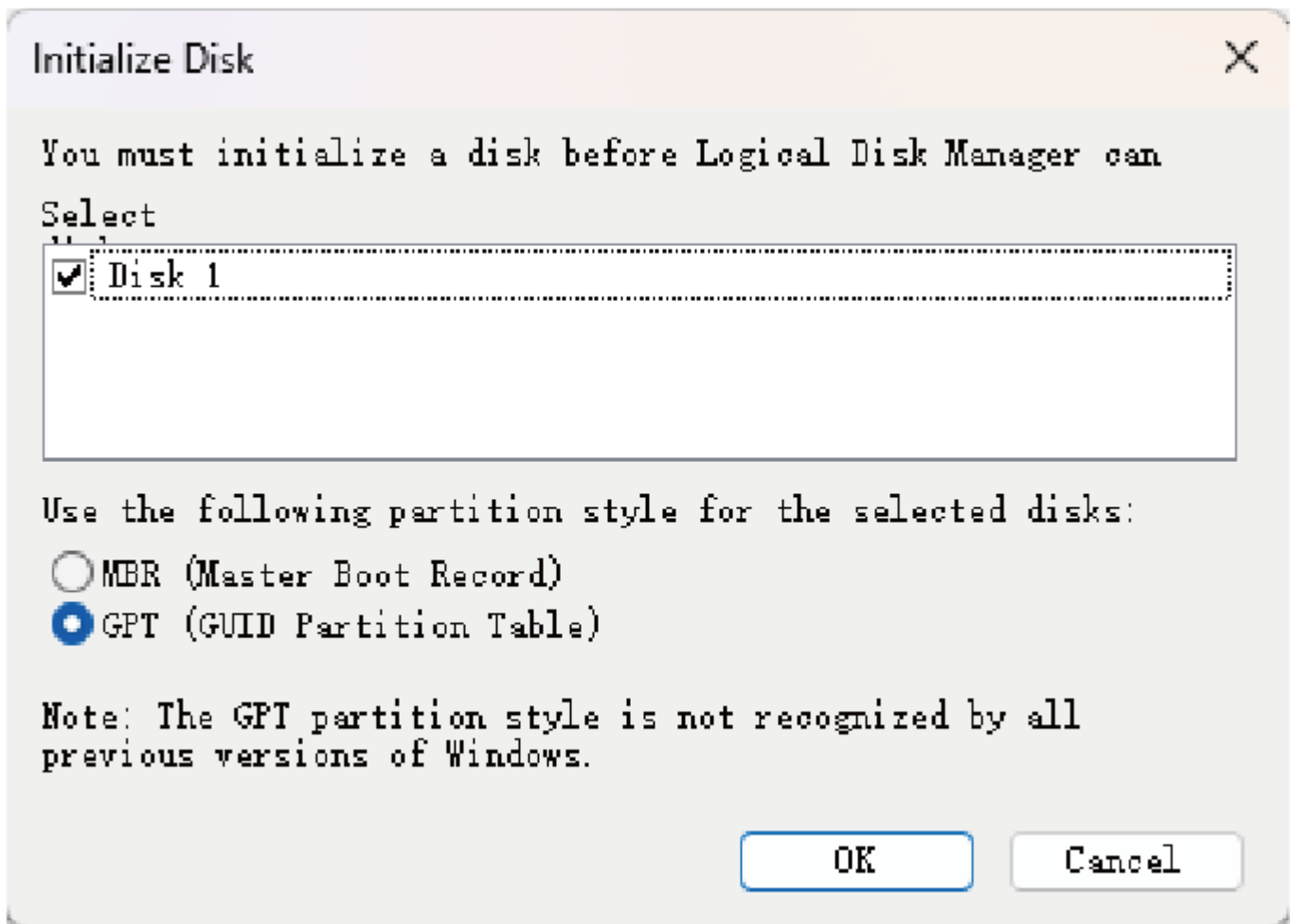
Format and Partition

To use the product initially, please create a new partition as the system-specific instructions:

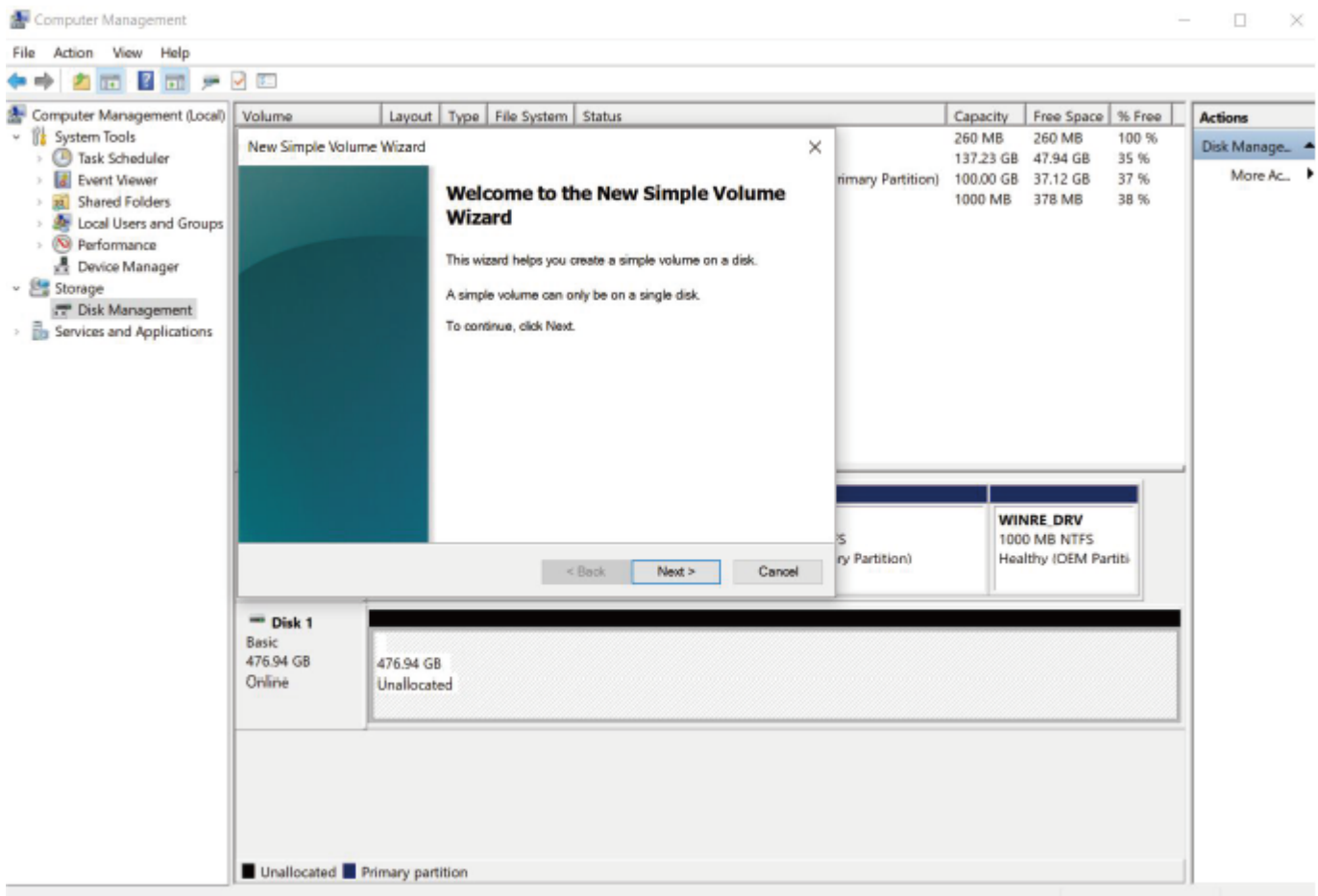
Note: The following method is for reference only and may vary depending on the computer system version.

For Windows

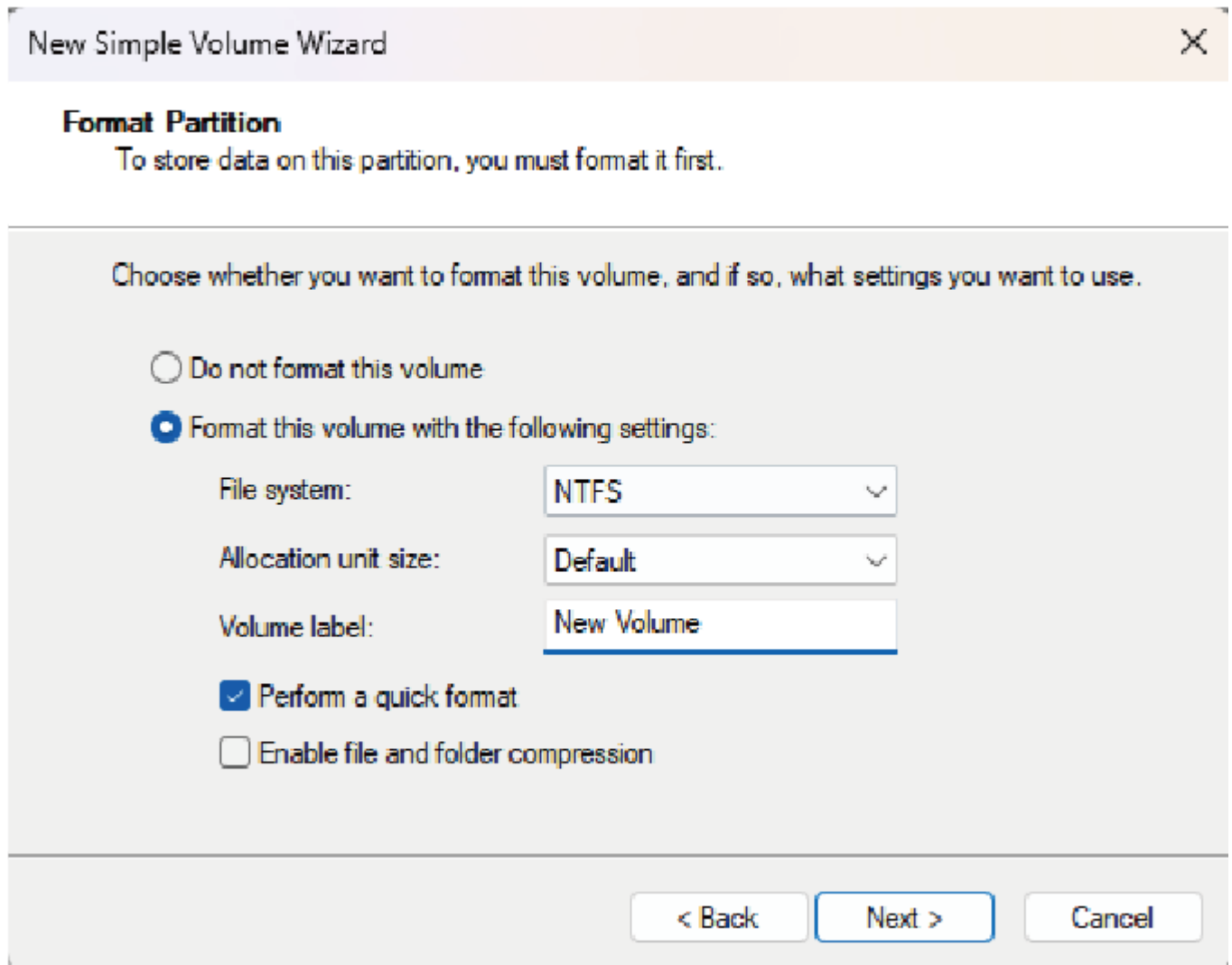
1. Right click **This PC** icon and select **Manage**, choose **Storage** then go to **Disk Management**, select **MBR(Master Boot Record)** or **GPT(GUIDE Partition Table)**, click **OK**.



2. Right click your disk, choose **New Simple Volume** and select **Next** to proceed.



3. Select the **File system**, **Allocation unit size** and **Volume label** from the Erase or use the default one.



The screenshot shows the 'New Simple Volume Wizard' dialog box, specifically the 'Format Partition' step. The title bar reads 'New Simple Volume Wizard' with a close button (X) on the right. Below the title bar, the section is titled 'Format Partition' with a subtitle: 'To store data on this partition, you must format it first.' The main area contains the instruction: 'Choose whether you want to format this volume, and if so, what settings you want to use.' There are two radio button options: 'Do not format this volume' (unselected) and 'Format this volume with the following settings:' (selected). Under the selected option, there are three settings: 'File system:' set to 'NTFS', 'Allocation unit size:' set to 'Default', and 'Volume label:' set to 'New Volume'. There are also two checkboxes: 'Perform a quick format' (checked) and 'Enable file and folder compression' (unchecked). At the bottom right, there are three buttons: '< Back', 'Next >', and 'Cancel'.

New Simple Volume Wizard

Format Partition
To store data on this partition, you must format it first.

Choose whether you want to format this volume, and if so, what settings you want to use.

☐ Do not format this volume

☒ Format this volume with the following settings:

File system: NTFS

Allocation unit size: Default

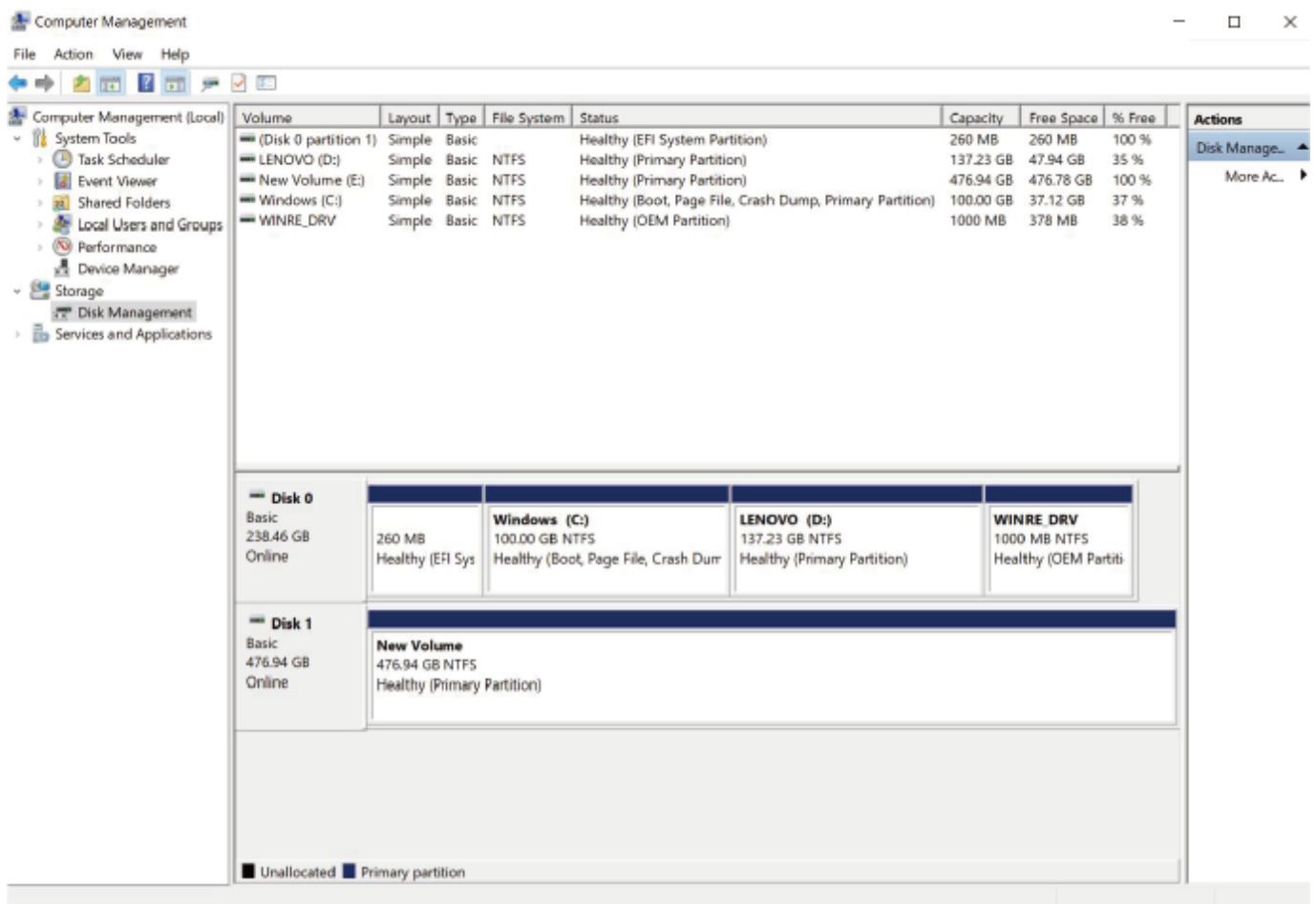
Volume label: New Volume

☒ Perform a quick format

☐ Enable file and folder compression

< Back Next > Cancel

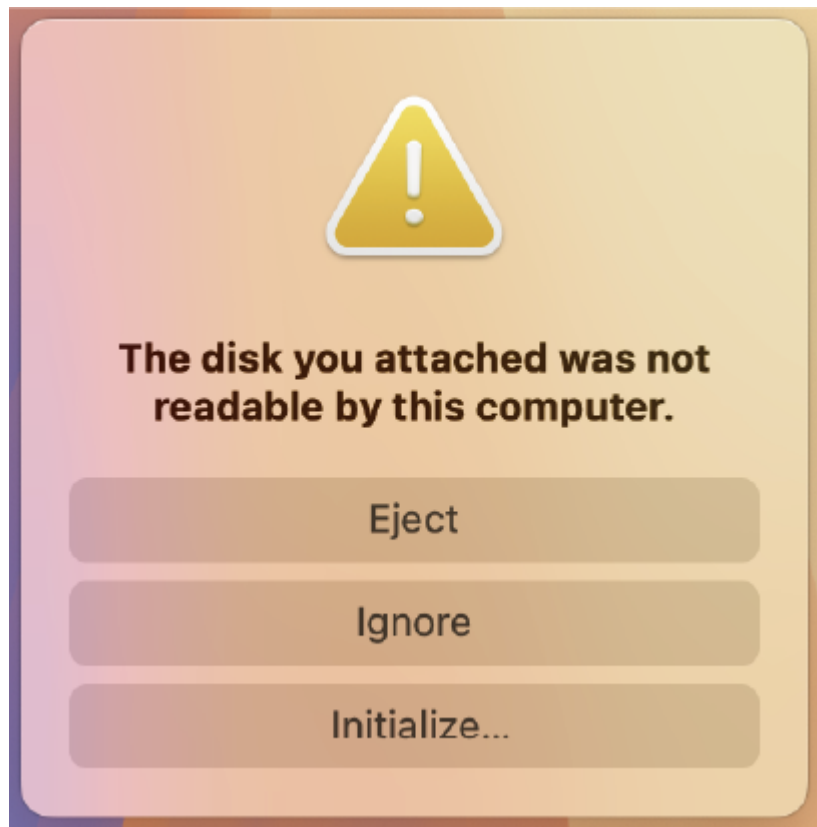
4. Follow the instructions step by step to complete format installation.



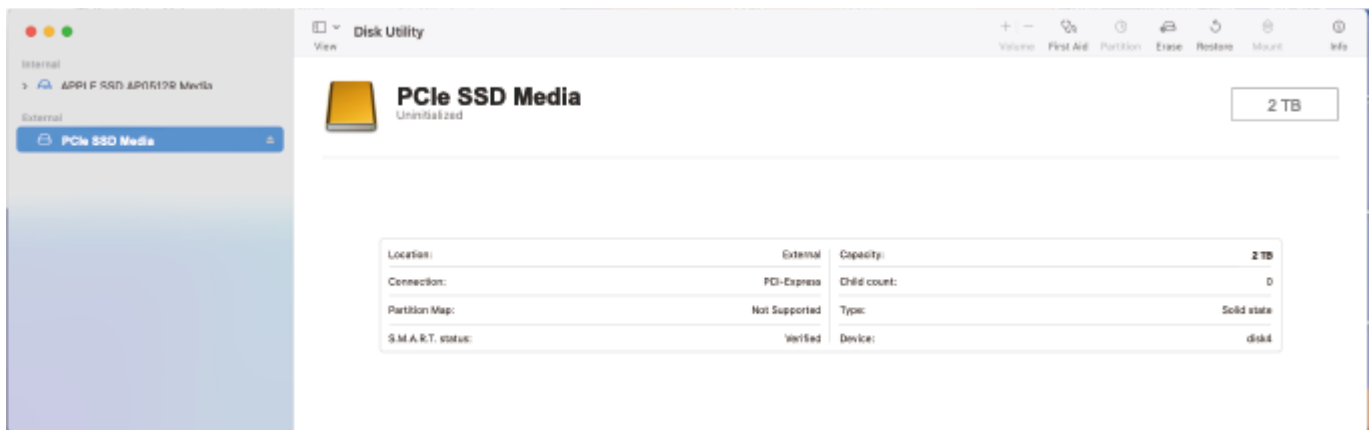
Note: For Windows computer, the maximum speed of the disk is achieved by selecting **Better Performance** from the **Policies** in the Windows **Drive Properties**. We do not recommend doing this if you are not aiming for ultimate performance.

For Mac

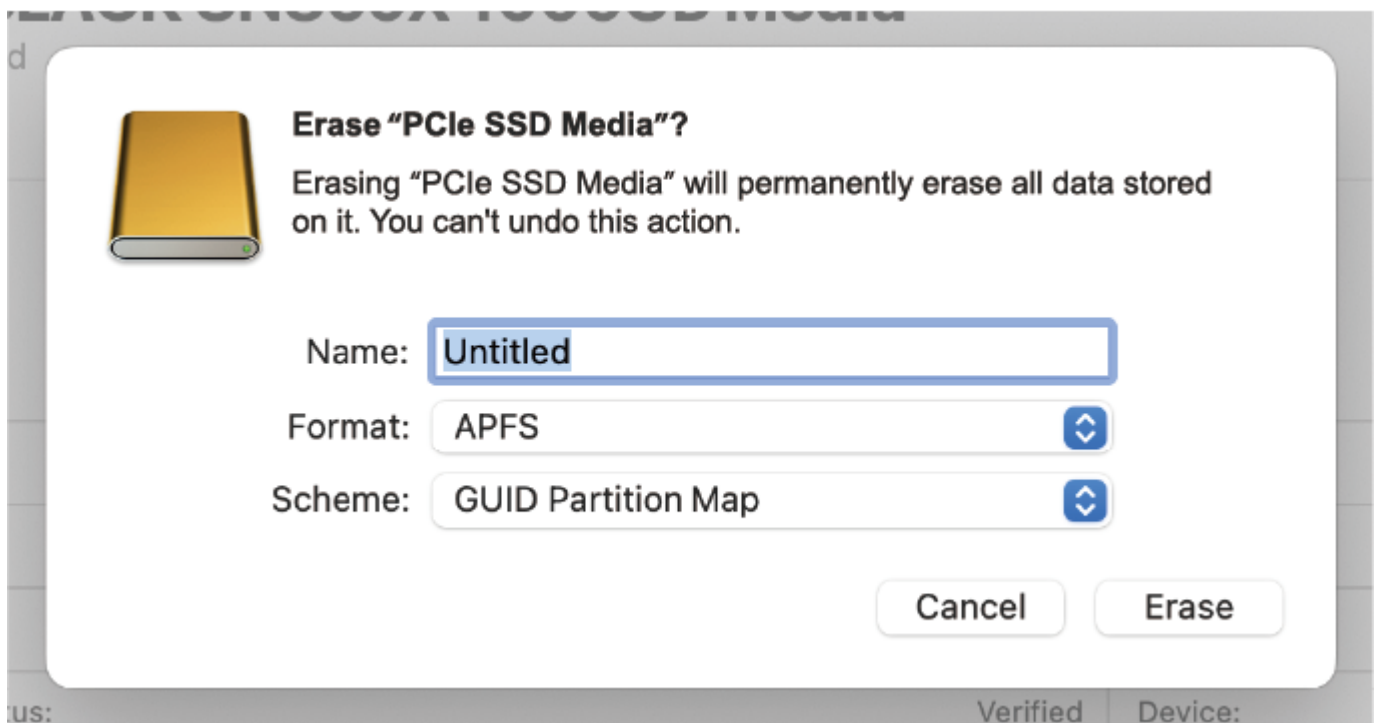
1. After connecting to the product, there is a prompt window **The disk you attached was not readable by this computer** popping up.
2. Select **Initialize...** in the pop-up prompt window.



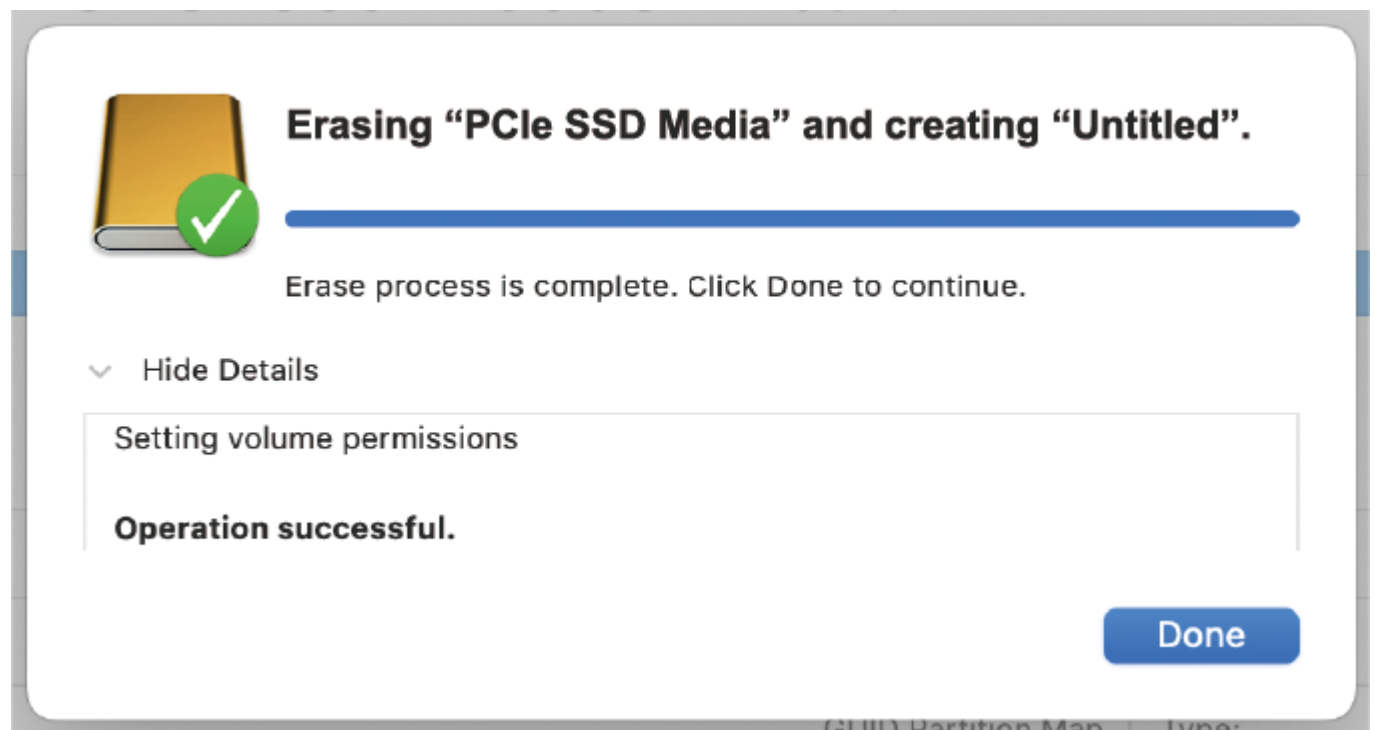
3. Select **External storage** from the left of Disk Utility, then select **Erase** from the top of the **Disk Utility**.



4. Select the **Name**, **Format** and **Scheme** from the **Erase** or use the default one.



5. Click **Done** to finish the configuration.



Chapter 3 FAQ and After-sale Service

This chapter contains the following sections :

- [FAQ](#)
- [After-sale Service](#)

FAQ and After-sale Service

FAQ

Q1. Why Thunderbolt™ 3 PCs can not recognize this enclosure?

A1. It is an innovation which was not available at the time Thunderbolt™ 3 PCs were developed. Thunderbolt™ 3 PCs launched in previous years do not support this new technology.

Q2. Why doesn't it work after connecting it to the USB-A/USB-C PCs?

A2. This External storage is not compatible with USB-A PCs, and the port on the USB-C PCs must support USB 15W or above.

Q3. Why doesn't the product work with a Type-C port that only supports USB 2.0?

A3. The product isn't compatible with USB 2.0, so it won't work with a Type-C port limited to USB 2.0 speeds.

Q4. Why can't the disk be read after switching to different system, such as Windows and Mac?

A4. Different computer systems support different disk formats, which may cause the disk to be unrecognizable after switching computers. Check that the disk is formatted in a compatible format like APFS, NTFS, exFAT, FAT32, etc.

Q5. Why does a "USB4 device functionality may be limited" or "Thunderbolt device functionality may be limited" message pop up on the bottom right of the PC?

A5. This occurs due to connection to a non-Thunderbolt/non-USB4 port, which limits functionality, commonly resulting in non-operation or reduced speed.

Q6. Why does this External Storage have different performance when used on different computers?

A6. The actual speed depends on your computer's performance including hardware interfaces, system, drivers, etc.

Q7. Why can't it reach 40/80Gbps?

A7. That's because the available PCIe bandwidth for Thunderbolt 4/USB4 is 32Gbps, and for Thunderbolt 5/USB4 v2 is 64Gbps.

Q8. Why doesn't the test on my computer reach the advertised speed?

A8. Test data is based on Wavlink Labs results, actual speeds may vary depending on your computer's hardware and software configuration.

After-sale Service

Need help?

We're here for you!



Online support: wavlink.com

Available Mon-Fri 8:30 am-5:30pm (UTC+8)



support@wavlink.com

Available Mon-Fri 8:30 am-5:30pm (UTC+8)



+1 8889730883

Mon-Fri 9:00 am - 10:00 pm (UTC-5)

www.wavlink.com



Thank you for purchasing
WAVLINK product!

